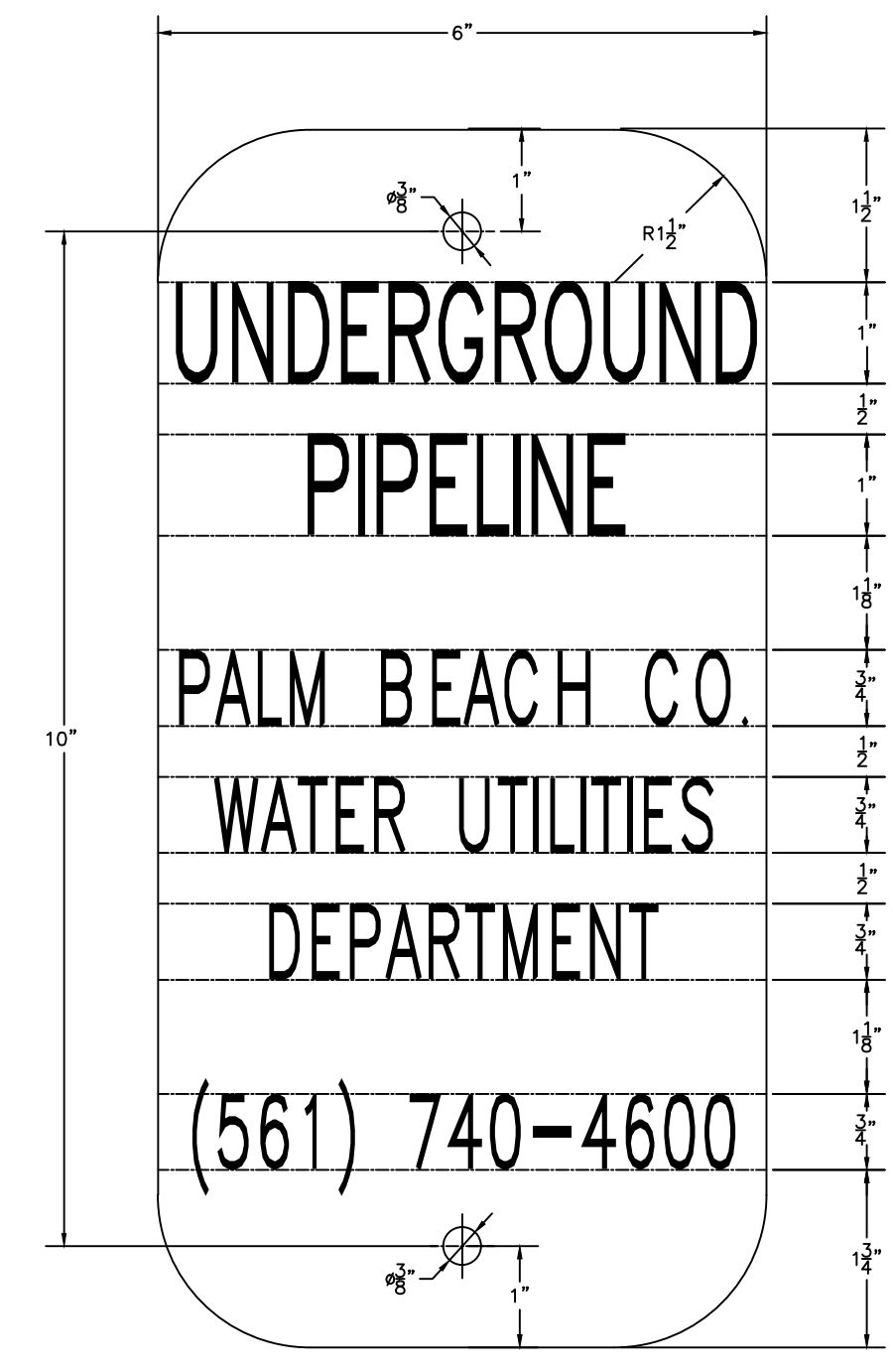


NO.	DATE	REVISION / REMARKS
JUL	2019	GENERAL REVISION
JUL	2023	GENERAL REVISION

STD DETAILS

SHEET NUMBER
 0 OF 0

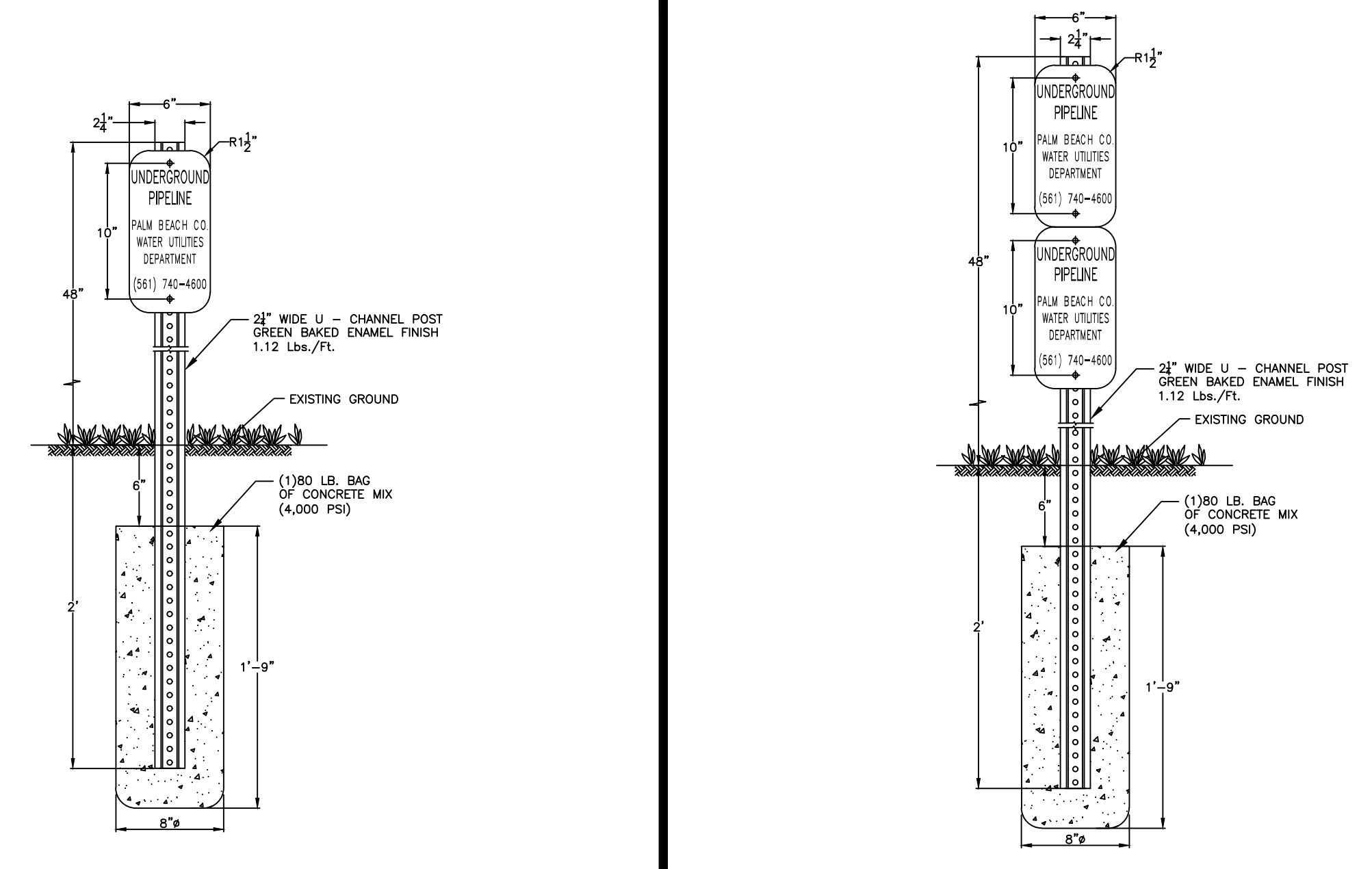
SEAL



NOTE:
 SIGN SHALL BE 6" WIDE X 12" LONG, ALUMINUM (0.080 GA.). SIGN COLOR IS WHITE WITH BLACK LETTERING. ROUNDED CORNERS (1.5" RAD.), 2 HOLES (3/8" DIAM.), 10" O.C.

UNDERGROUND PIPELINE SIGN DETAIL

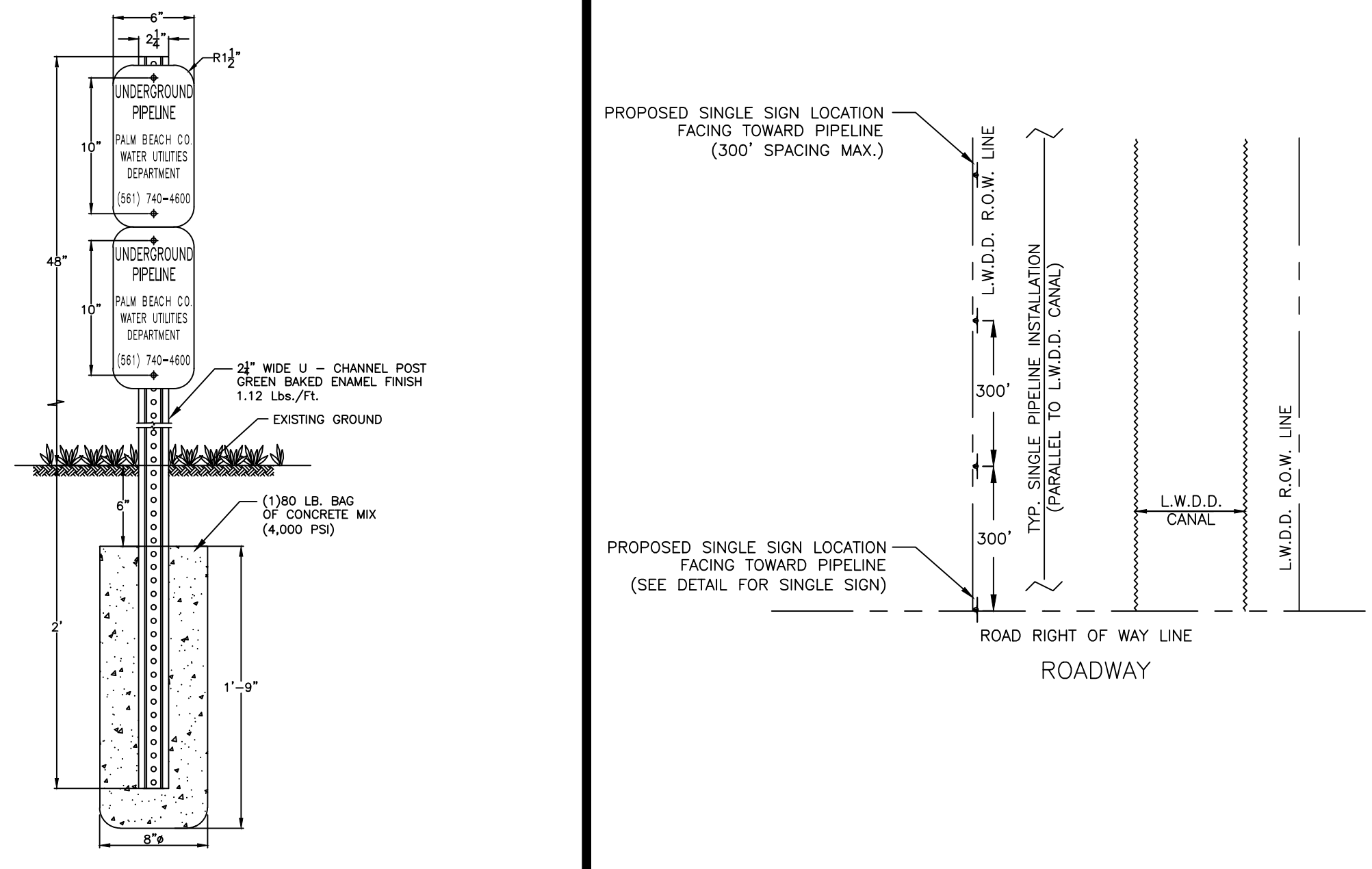
35W



NOTE:
 SIGNS SHALL BE 6" WIDE X 12" LONG, ALUMINUM (0.080 GA.). SIGN COLOR IS WHITE WITH BLACK LETTERING. ROUNDED CORNERS (1.5" RAD.), 2 HOLES (3/8" DIAM.), 10" O.C.

SINGLE UNDERGROUND PIPELINE SIGN DETAIL

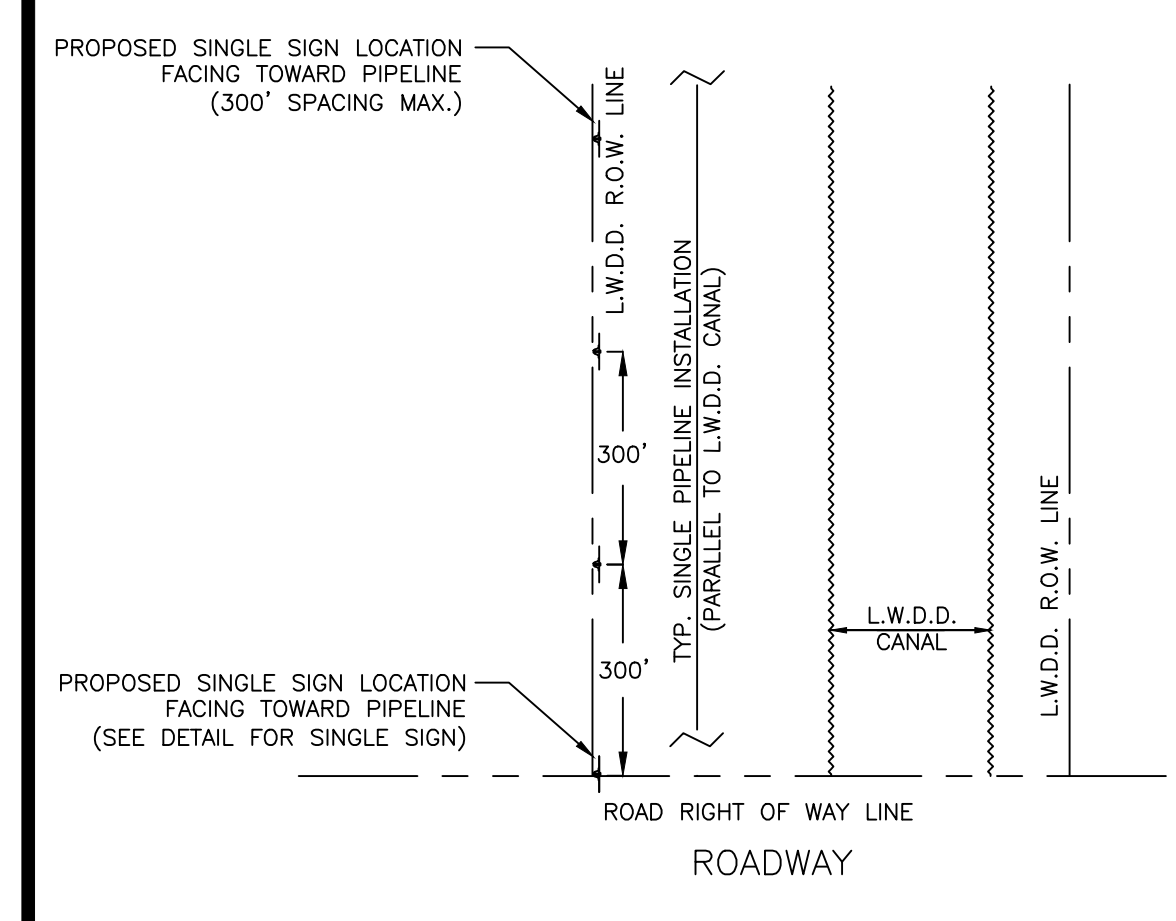
36W



NOTE:
 1. SIGNS SHALL BE 6" WIDE X 12" LONG, ALUMINUM (0.080 GA.). SIGN COLOR IS WHITE WITH BLACK LETTERING. ROUNDED CORNERS (1.5" RAD.), 2 HOLES (3/8" DIAM.), 10" O.C.
 2. THE DUAL UNDERGROUND PIPELINE SIGN SHALL BE UTILIZED FOR TWO UNDERGROUND PIPELINES WITHIN THE L.W.D.D. RIGHT-OF-WAY.

DUAL UNDERGROUND PIPELINE SIGN DETAIL

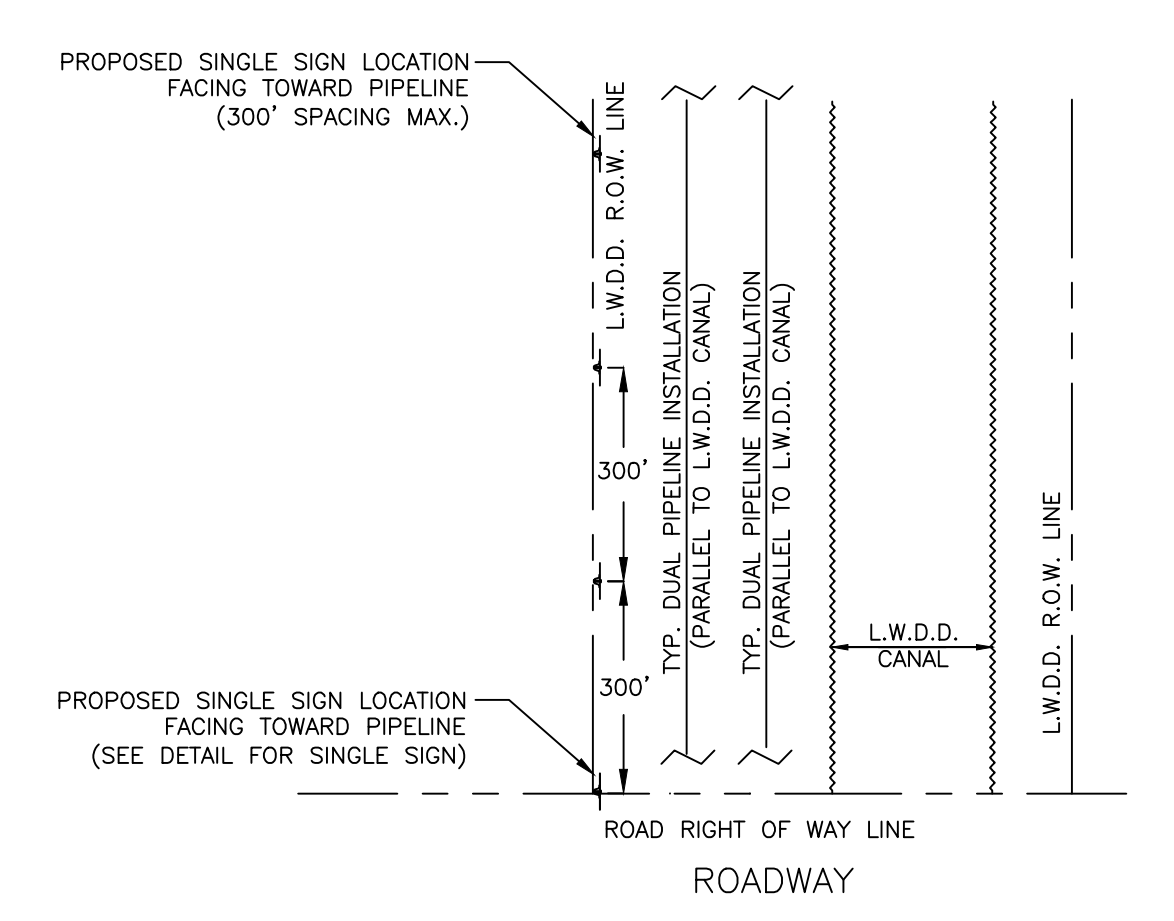
37W



NOTE:
 1. UNDERGROUND PIPELINE WARNING SIGNS ARE TO BE PLACED AT THE POINT IN WHICH THE LINE INGRESSES AND EGRESSES THE L.W.D.D. RIGHT-OF-WAY.
 2. SIGN SPACING IS TO BE A MAXIMUM OF 300' ALONG THE L.W.D.D. RIGHT-OF-WAY, AS CLOSE AS POSSIBLE TO THE L.W.D.D. RIGHT-OF-WAY.

L.W.D.D. - SINGLE PIPE PARALLEL INSTALLATION UNDERGROUND PIPELINE SIGN INSTALLATION DETAIL

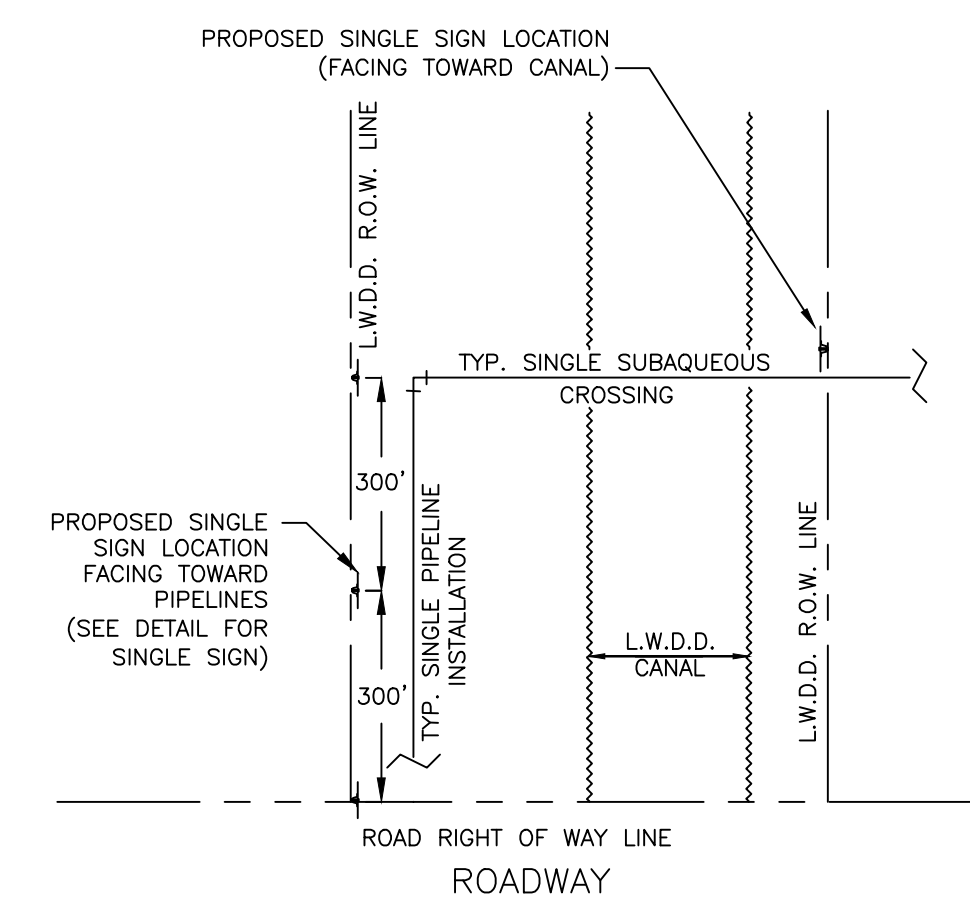
38W



NOTE:
 1. UNDERGROUND PIPELINE WARNING SIGNS ARE TO BE PLACED AT THE POINT IN WHICH THE LINE INGRESSES AND EGRESSES THE L.W.D.D. RIGHT-OF-WAY.
 2. SIGN SPACING IS TO BE A MAXIMUM OF 300' ALONG THE L.W.D.D. RIGHT-OF-WAY, AS CLOSE AS POSSIBLE TO THE L.W.D.D. RIGHT-OF-WAY.

L.W.D.D. - DUAL PIPE PARALLEL INSTALLATION UNDERGROUND PIPELINE SIGN INSTALLATION DETAIL

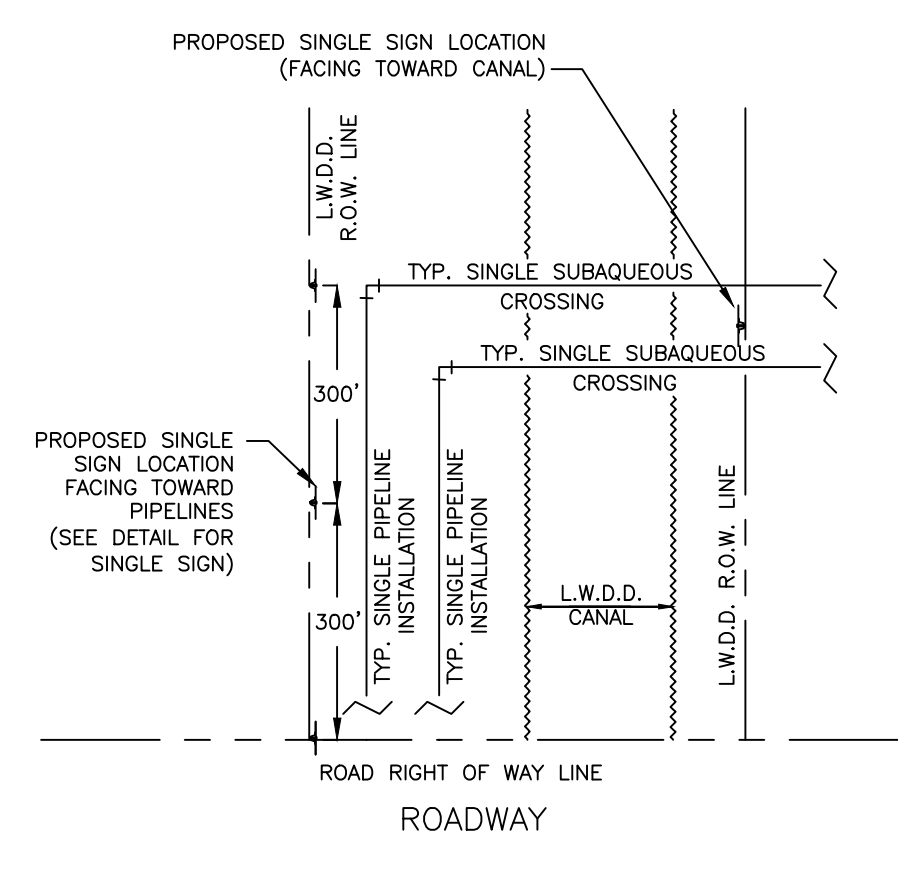
39W



NOTE:
 1. UNDERGROUND PIPELINE WARNING SIGNS ARE TO BE PLACED ON BOTH SIDES OF THE CANAL CROSSING; AT THE INSIDE EDGE OF THE RIGHT-OF-WAY.
 2. SIGN POST IS NOT TO BE PLACED DIRECTLY OVER PIPELINE. OFFSET SIGN POST 5' FROM PIPELINE.

L.W.D.D. - SINGLE PIPE SUBAQUEOUS CROSSING UNDERGROUND PIPELINE SIGN INSTALLATION DETAIL

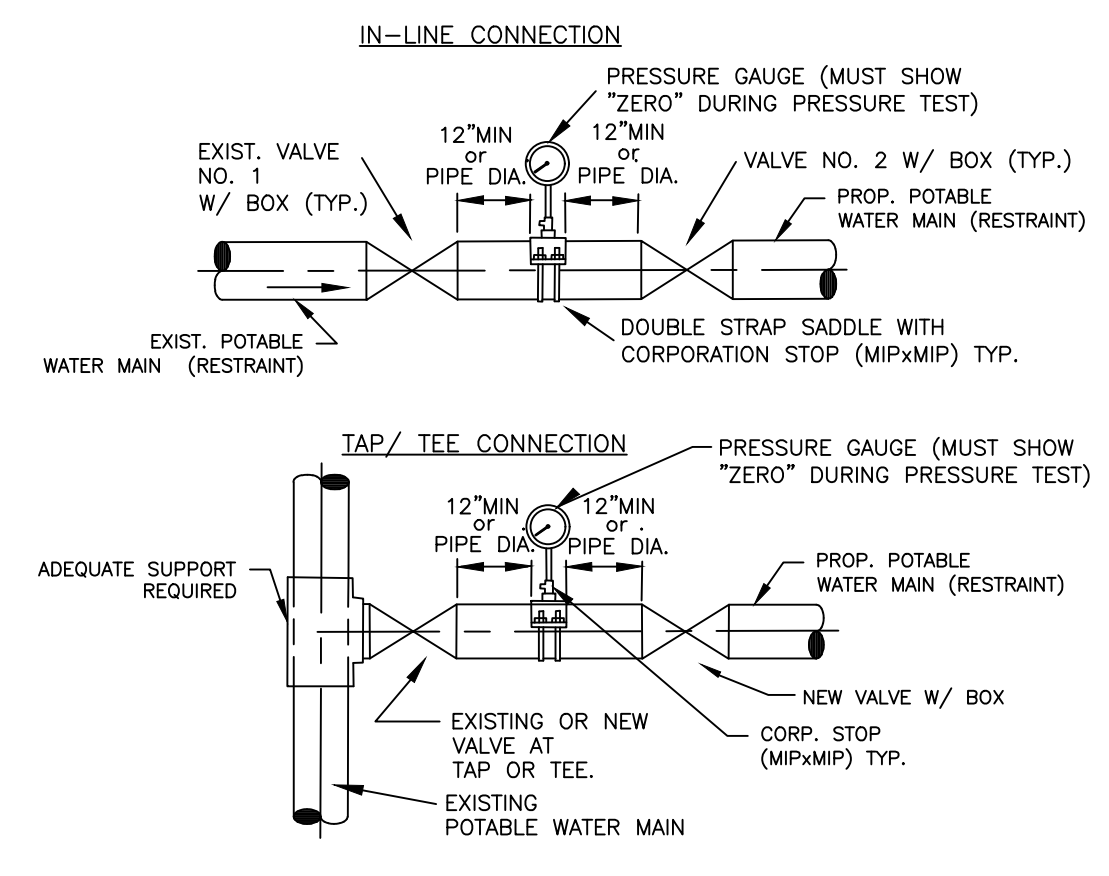
40W



NOTE:
 1. UNDERGROUND PIPELINE WARNING SIGNS ARE TO BE PLACED ON BOTH SIDES OF THE CANAL CROSSING; AT THE INSIDE EDGE OF THE RIGHT-OF-WAY.
 2. SIGN POST IS NOT TO BE PLACED DIRECTLY OVER PIPELINE. OFFSET SIGN POST 5' FROM PIPELINE.

L.W.D.D. - DUAL PIPE SUBAQUEOUS CROSSING UNDERGROUND PIPELINE SIGN INSTALLATION DETAIL

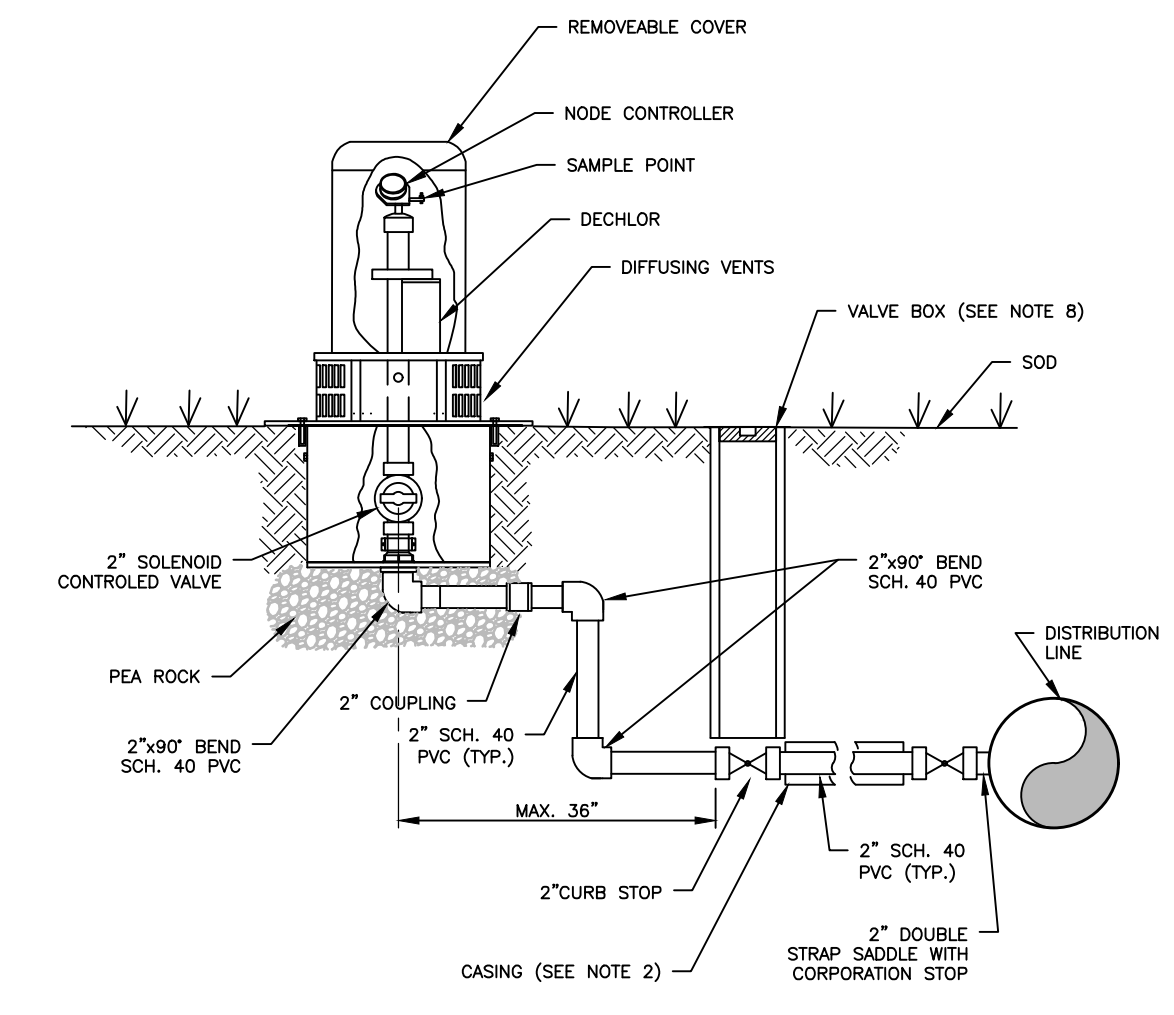
41W



NOTE:
 1. THE "ALTERNATIVE" PROCEDURE MUST BE APPROVED BY WUD IN ADVANCE. IT ALLOWS THE NEW PIPE TO BE PRESSURE TESTED PRIOR TO BACTERIOLOGICAL TESTING.
 2. BOTH VALVES SHALL BE KEPT CLOSED EXCEPT FOR FILLING AND FLUSHING.
 3. WUD SHALL BE NOTIFIED BEFORE FILLING AND FLUSHING.
 4. PRESSURE TEST PUMP MAY BE CONNECTED TO SERVICE LINE, FIRE HYDRANT OR BLOWOFF IN THE TESTED WATER MAIN. NO EXTRA TAPS ARE PERMITTED UNLESS UNAVOIDABLE.
 5. GAUGE AND RISER TO BE REMOVED AFTER PRESSURE TEST. HOLE TO BE PLUGGED AT SADDLE WITH BRASS PLUG. A BRASS CAP IS REQUIRED.
 6. THREAD AREAS OF CORPORATION STOP SHALL BE SPIRAL WRAPPED WITH TWO WRAPS OF TEFLON TAPE.
 7. ENSURE PROPER RESTRAINT OF EXISTING VALVE(S) AND PIPE PRIOR TO NEW CONNECTION.
 8. SEE ALSO DETAIL FOR "STANDARD POTABLE WATER MAIN TIE-IN PROCEDURE"
 9. RECORD DRAWINGS TO SHOW DATA FOR ALL TEST TAPS.
 10. ALL BRASS SHALL BE "LEAD FREE".

ALTERNATIVE WATER MAIN TIE-IN

42W



NOTE:
 1. AUTOMATIC FLUSHING ASSEMBLY TO BE INSTALLED PER MANUFACTURER'S REQUIREMENTS.
 2. FOR INSTALLATION OF SERVICES UNDER DRIVEWAYS AND ROADWAYS, USE MIN. 4" DIAMETER BLACK IRON, PVC SCH. 40, OR HDPE SCH. 9 CASING. CASING SHALL EXTEND MIN. 24" BEYOND EDGE OF PAVEMENT. CASING TO BE SEALED WITH CEMENT. CASING SHALL BE COLOR-CODED BLACK, WHITE, BLUE, OR BLUE STRIPED.
 3. AUTOMATIC FLUSHING ASSEMBLY TO BE INSTALLED AS CLOSE AS POSSIBLE TO THE WATER MAIN WITHIN AN UTILITY EASEMENT OR ROAD RIGHT-OF-WAY WITH PRIOR DEPARTMENT APPROVAL. IF AUTOMATIC FLUSHING ASSEMBLY HOUSING IS INSTALLED IN ROAD RIGHT-OF-WAY IT SHALL NOT INTERFERE WITH CLEAR ZONE REQUIREMENTS AS SPECIFIED BY ROAD OWNER.
 4. BEDDING (MIN. 4") AND COVER (MIN. 4") OVER SERVICE LINE OR CASING SHALL CONSIST OF FINE GRANULAR MATERIAL UNSUITABLE IN-SITU MATERIALS SUCH AS MUCK, DEBRIS AND LARGER ROCKS SHALL BE REMOVED WITH 2" MAXIMUM SIZE.
 5. ALL HARDWARE (I.E. BOLTS, ETC.) REQUIRED FOR ASSEMBLY INSTALLATION SHALL BE 304 STAINLESS STEEL.
 6. THREADED AREAS OF CORPORATION STOP AND OTHER FITTINGS SHALL BE SPIRAL WRAPPED WITH TWO (2) WRAPS OF TEFLON TAPE. ALL BRASS SHALL BE "LEAD FREE".
 7. A 4" THICK COMPACTED 3/4" ROCK BASE IS REQUIRED. THE BASE SHALL EXTEND MINIMUM 12" BEYOND AUTOMATIC FLUSHING ASSEMBLY PAD PERIMETER.
 8. WHEN VALVE BOX IS LOCATED IN GRASS A CONCRETE COLLAR IS REQUIRED PER DEPARTMENT STANDARDS.

AUTOMATIC FLUSHING ASSEMBLY (TYPE A)

43W

THIS SPACE INTENTIONALLY LEFT BLANK

POTABLE WATER #5 STANDARD DETAILS

CONSULTANT:

IT'S THE LAW!
 CALL 48 HOURS BEFORE YOU DIG
1-800-432-4770
 SUNSHINE STATE ONE CALL OF FLORIDA, INC.
 UTILITIES NOTIFICATION CENTER

DESIGNED BY: WUD
 DRAWN BY: M. BUCKNER
 CHECKED BY: J. LAMMERT
 APPROVED BY: WUD
 Palm Beach County
 Water Utilities Department
 P.O. Box 16097
 West Palm Beach, FL 33416-6097