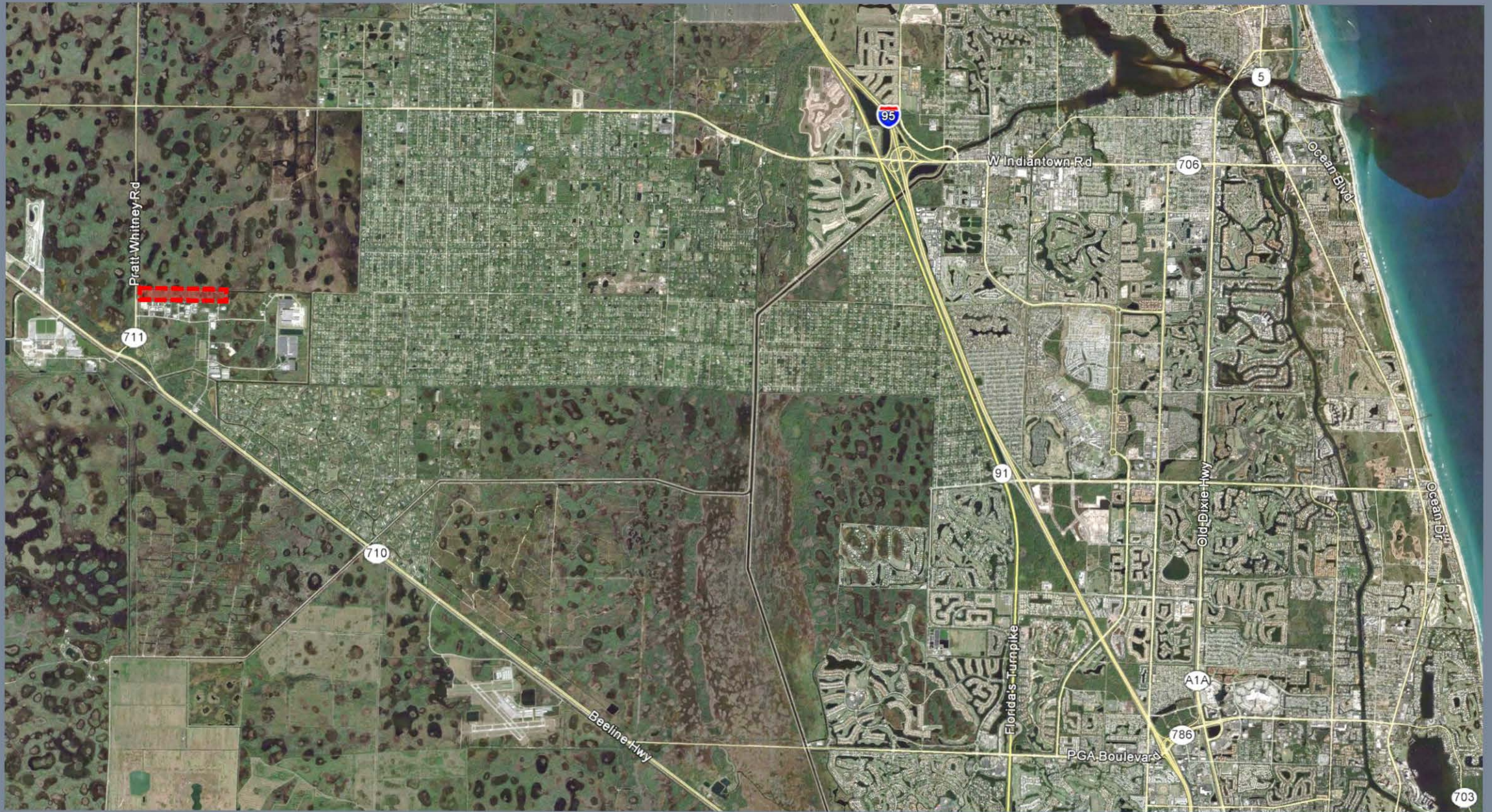


A landscape photograph of a forest at sunset. The sky is a gradient of light blue to orange. The trees are silhouetted against the bright orange light of the setting sun. The text 'SURF RANCH FLORIDA' is overlaid in white, bold, sans-serif font, centered horizontally. Two thin white horizontal lines extend from the left and right sides of the text, meeting the edges of the frame.

**SURF RANCH FLORIDA**

# SITE LOCATION



A person wearing a dark hoodie and a cap is seen from behind, looking at a wall of surfboards. The surfboards are leaning against the wall and have various designs and colors. The background is a warm, orange-toned wall.

# SURF RANCH FLORIDA

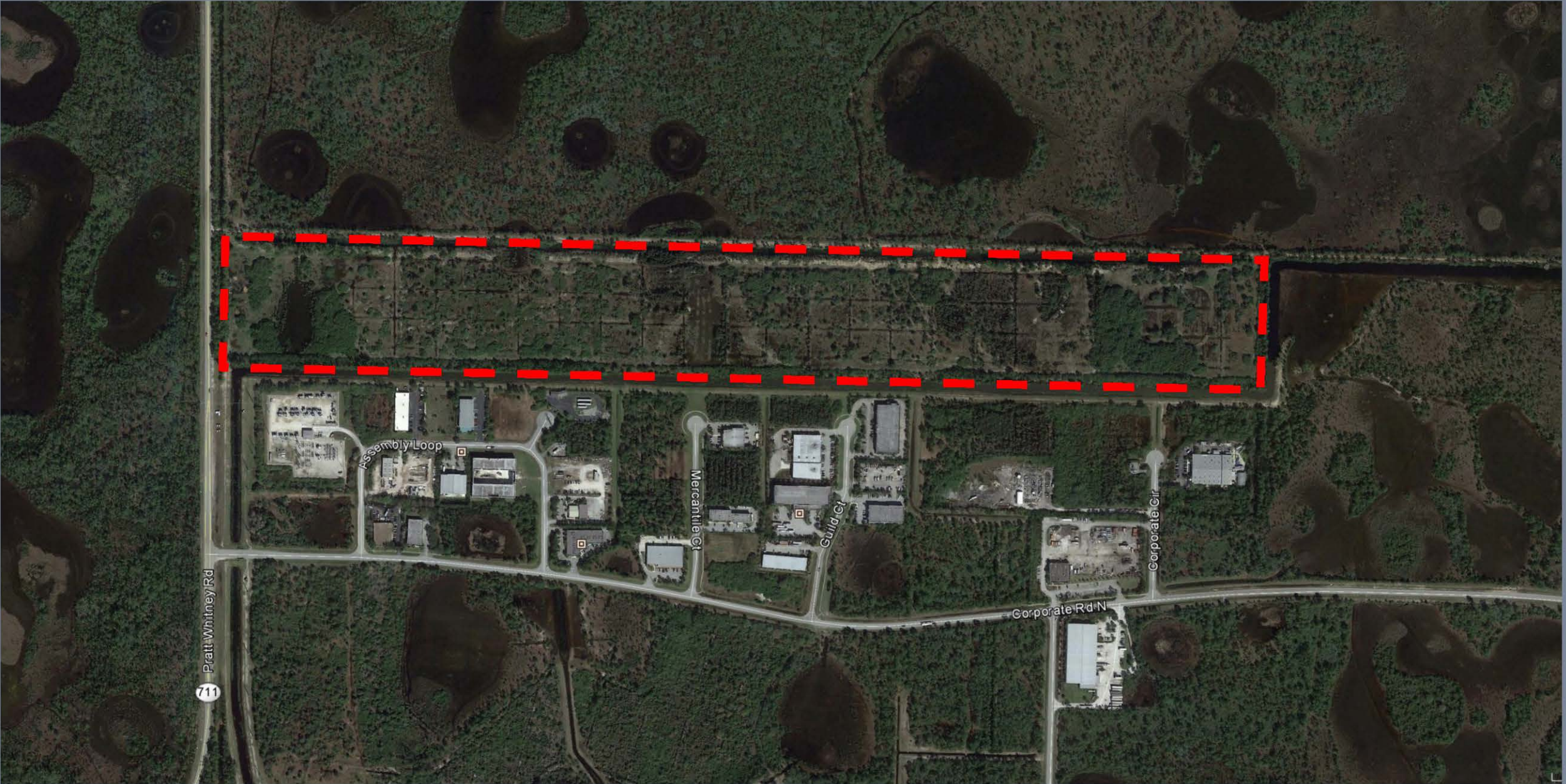
SITE

**80 ACRES ADJACENT TO PALM BEACH PARK OF COMMERCE**

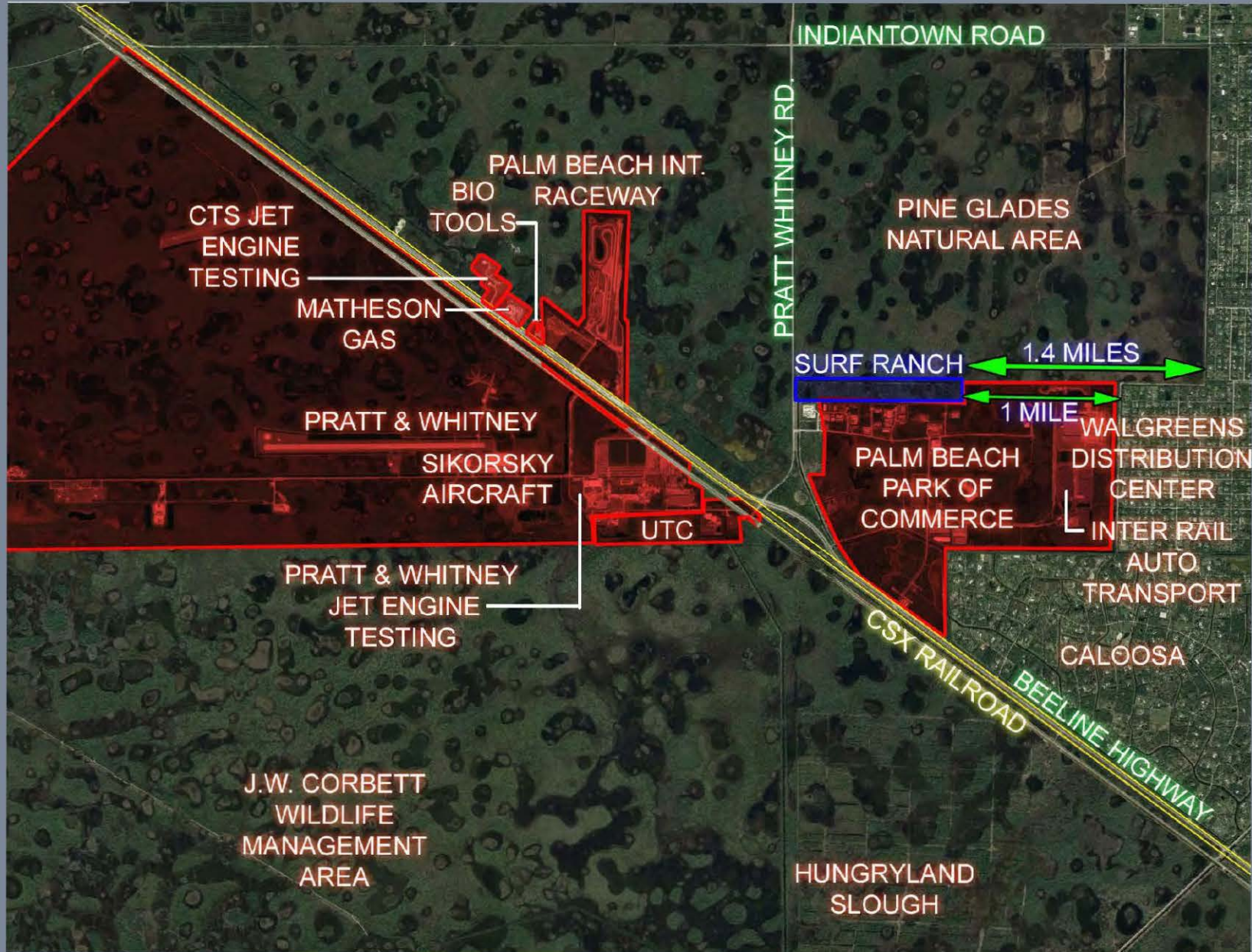
**IRREGULAR SHAPED PARCEL: 660'x 5,000'**

**ZONED: PLANNED INDUSTRIAL PARK DEVELOPMENT**

# SITE LOCATION



# SURROUNDING USES



# — SURF LAKE —



# **SURF RANCH FLORIDA**

## **PROJECT OVERVIEW**

**THE WORLD SURF LEAGUE AND THE KELLY SLATER WAVE COMPANY PROPOSE TO BUILD A WORLD-CLASS, MAN-MADE WAVE SYSTEM IN FLORIDA.**

**HIGH PROFILE, HIGH VISIBILITY – PALM BEACH COUNTY CHOSEN FOR WORLDWIDE PRODUCT LAUNCH**

**SUBSTANTIAL CAPITAL INVESTMENT IN COUNTY**

**322 JOBS, 83,000 ANNUAL GUESTS, \$33M ANNUAL ECONOMIC IMPACT**

**COMMUNITY AMENITY, YEAR ROUND TOURISM**

# **SURF RANCH FLORIDA**

## **PROGRAMMING**

**WORLD SURF LEAGUE TRAINING CENTER FOR ATHLETES**

**SURF SCHOOL - ACCESS FOR COMMUNITY, AFFORDABLE**

**LEARNING CENTER – EDUCATION ON WATER QUALITY, RENEWABLE  
ENERGY, ADJACENT NATURAL AREAS**

**UNDERPRIVILEGED PROGRAM - FREE ACCESS AND  
INSTRUCTION FOR KIDS WITH FINANCIAL NEED**

**WORLD SURF LEAGUE EVENTS AND SURFING COMPETITIONS**



# **SURF RANCH FLORIDA**

## **REQUESTS**

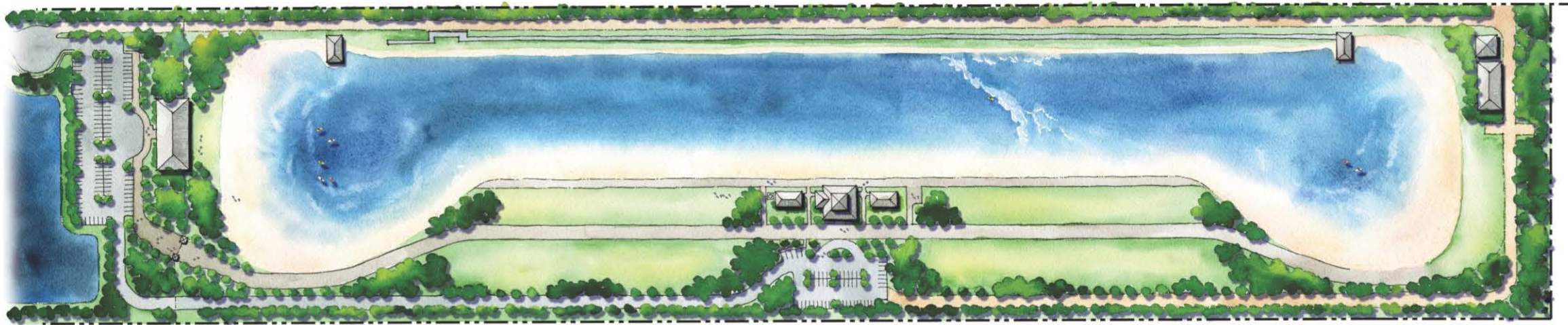
**AMENDMENTS TO ULDC-ADDING REGIONAL RECREATION**

**DEVELOPMENT ORDER AMENDMENT-CHANGE TO REC**

**CLASS A CONDITIONAL USE-MAN MADE SURF LAKE**

**DRO/VARIANCES**

# SURF LAKE



urban  
design  
kilday  
STUDIOS

## SURF RANCH FLORIDA

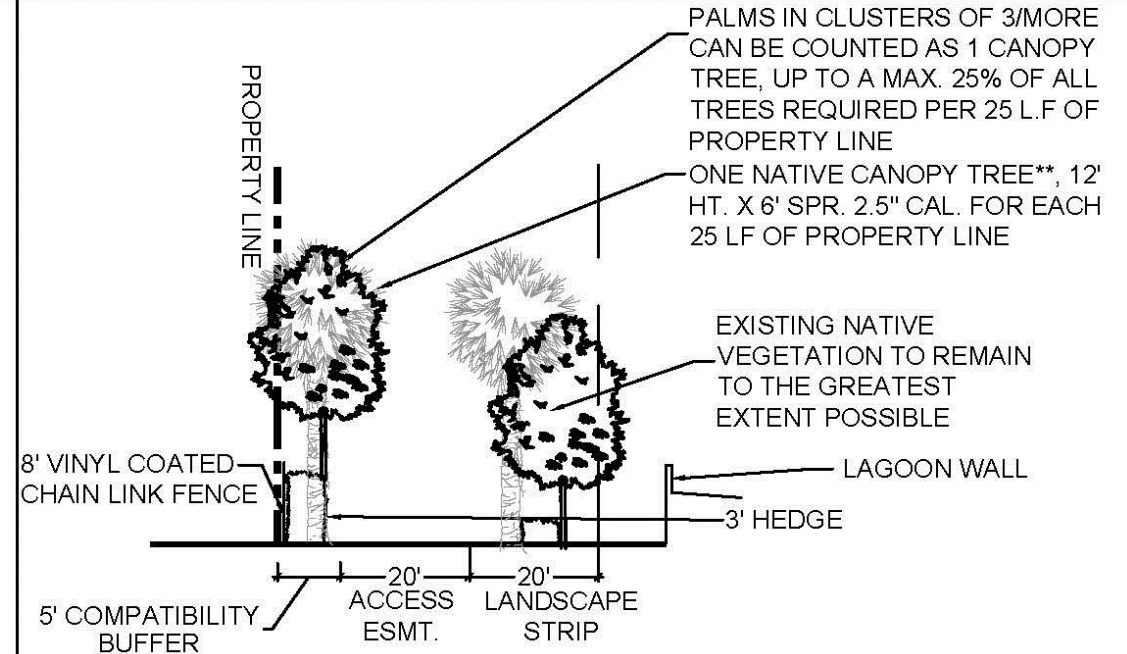
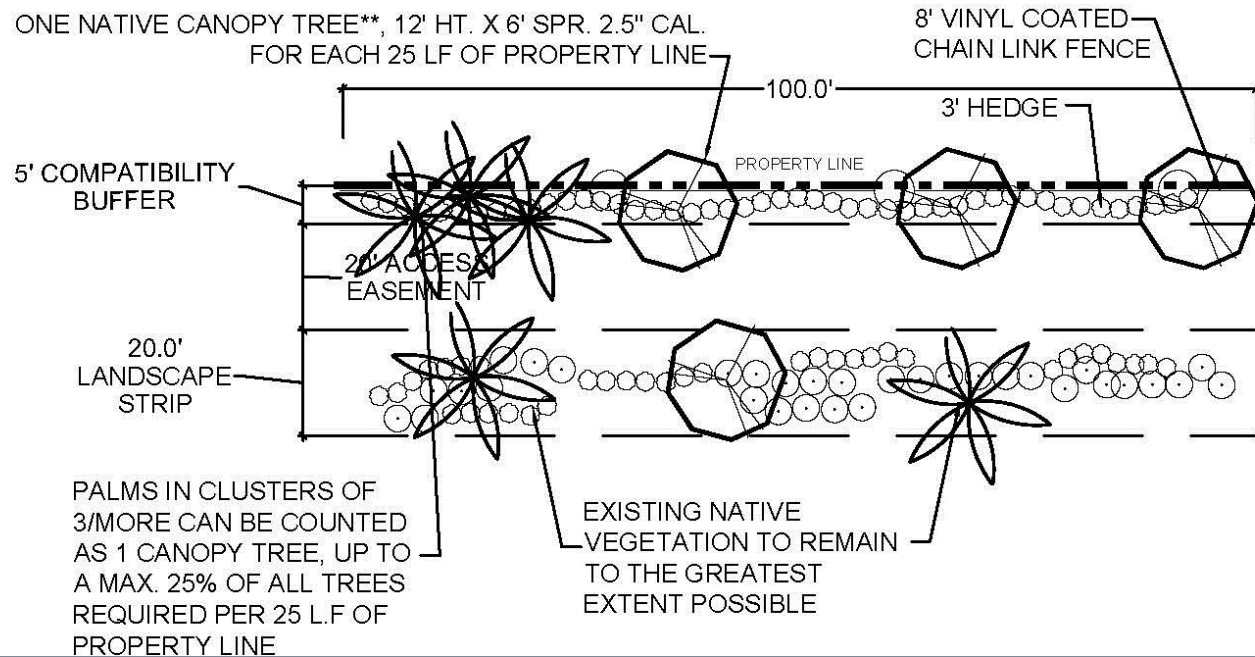




# LANDSCAPE BUFFER

- North Buffer adjacent to Surf Ranch – 25' wide total with 20' access easement
- Shade Trees every 25'
- 3 Tiers of shrubs

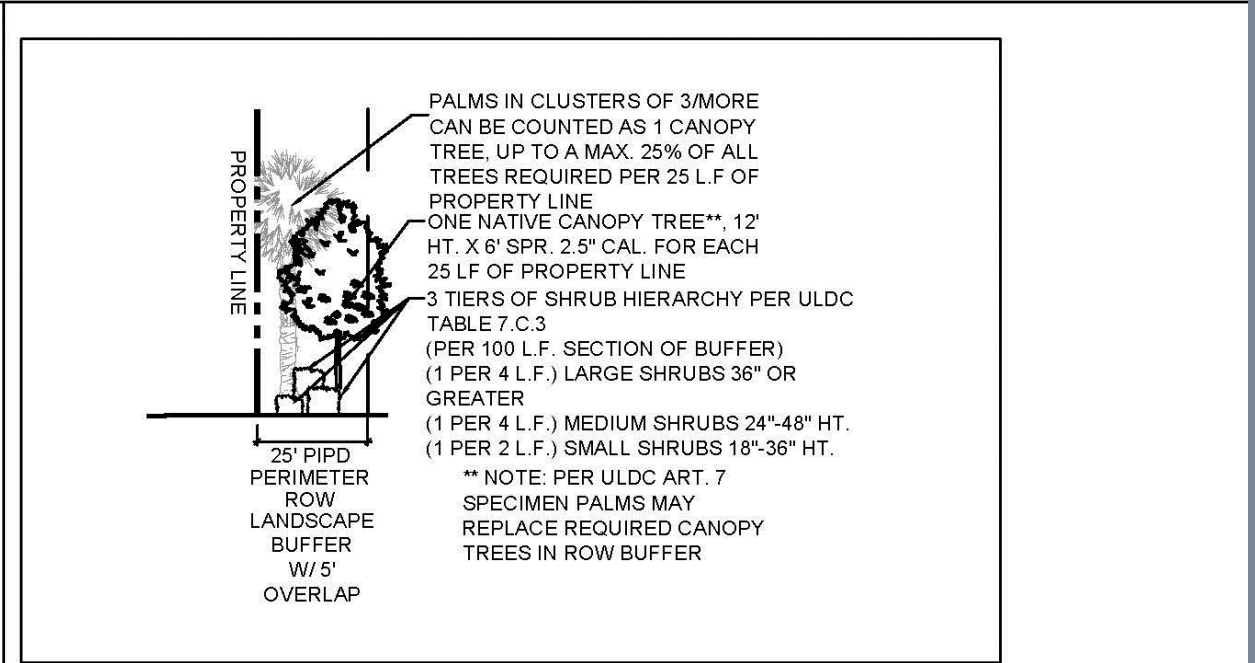
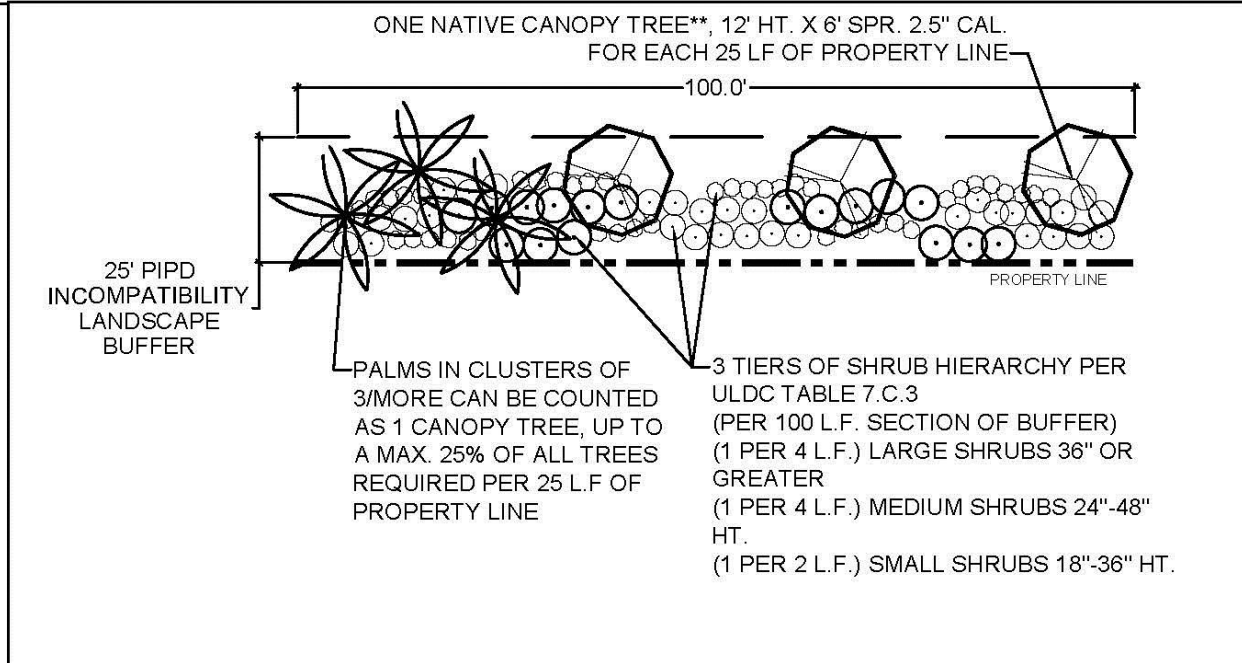
## 5' WIDE COMPATIBILITY BUFFER & 20' WIDE LANDSCAPE STRIP DETAIL & CROSS SECTION EAST 3,155' OF NORTH BUFFER



# LANDSCAPE BUFFER

- North Buffer - 25' Wide Buffer with shade trees every 25'
- 3 Tiers of shrubs

## 25' WIDE INCOMPATIBILITY BUFFER DETAIL AND CROSS SECTION -WEST 2,040' OF NORTH BUFFER



# SURF RANCH FLORIDA

## WATER MANAGEMENT

POTABLE WATER

CHLORINE TREATMENT

LAGOON DISCHARGE TO RETENTION POND

STORM EVENT DISCHARGE TO CLASS V- POOL WELL

# SURF LAKE



# SURF LAKE





**SURF RANCH FLORIDA**