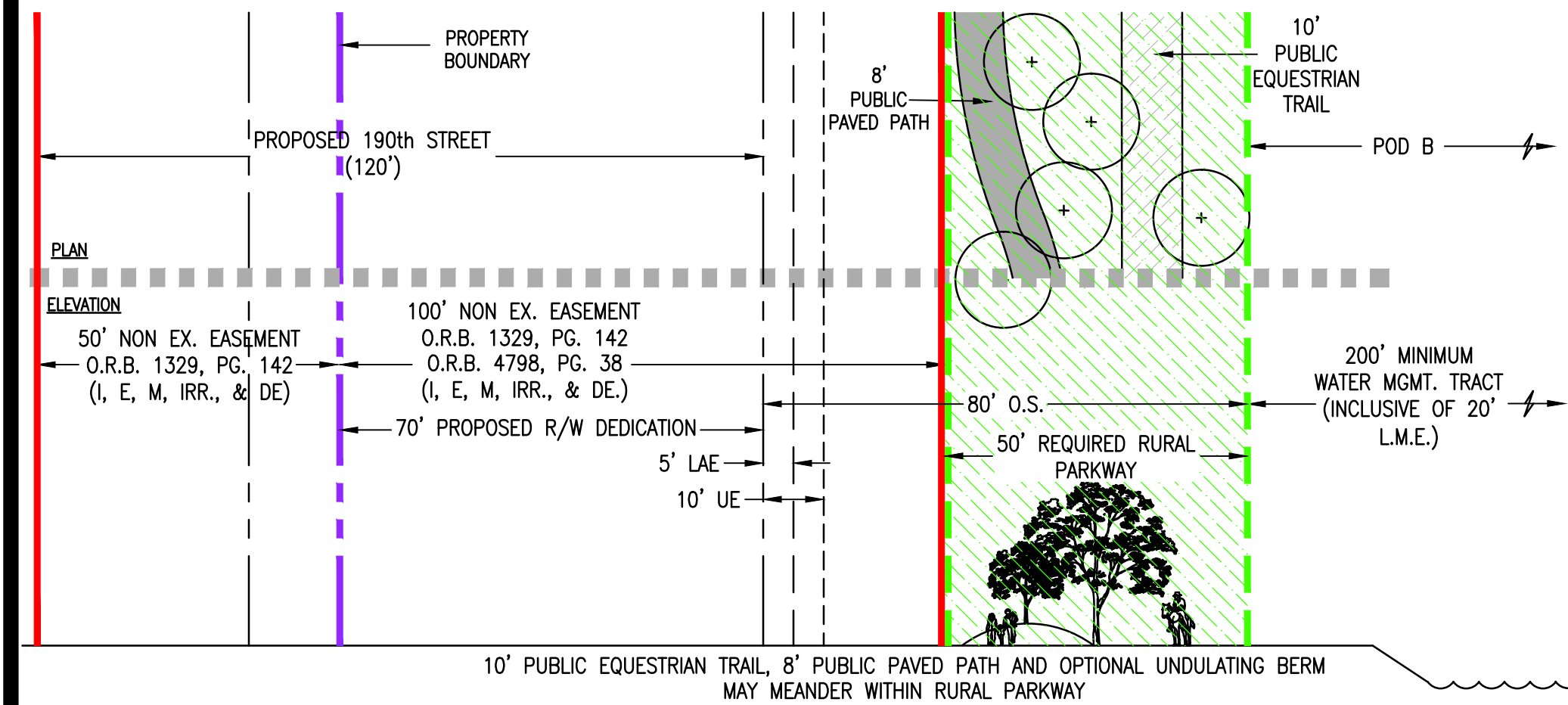
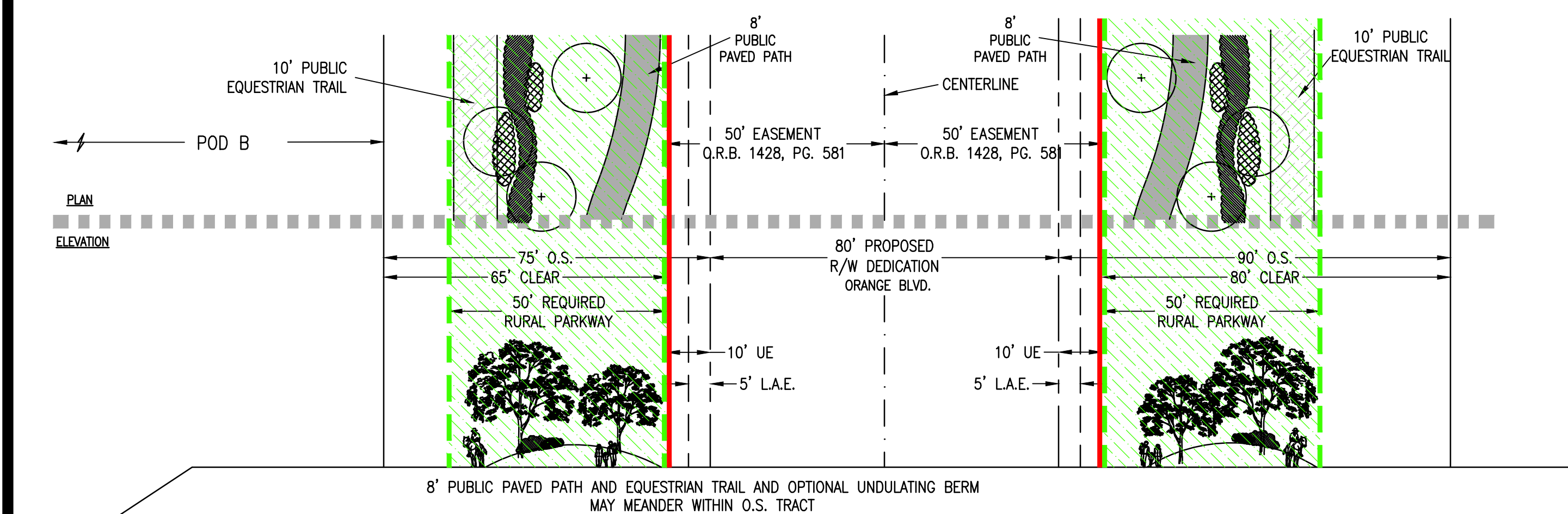


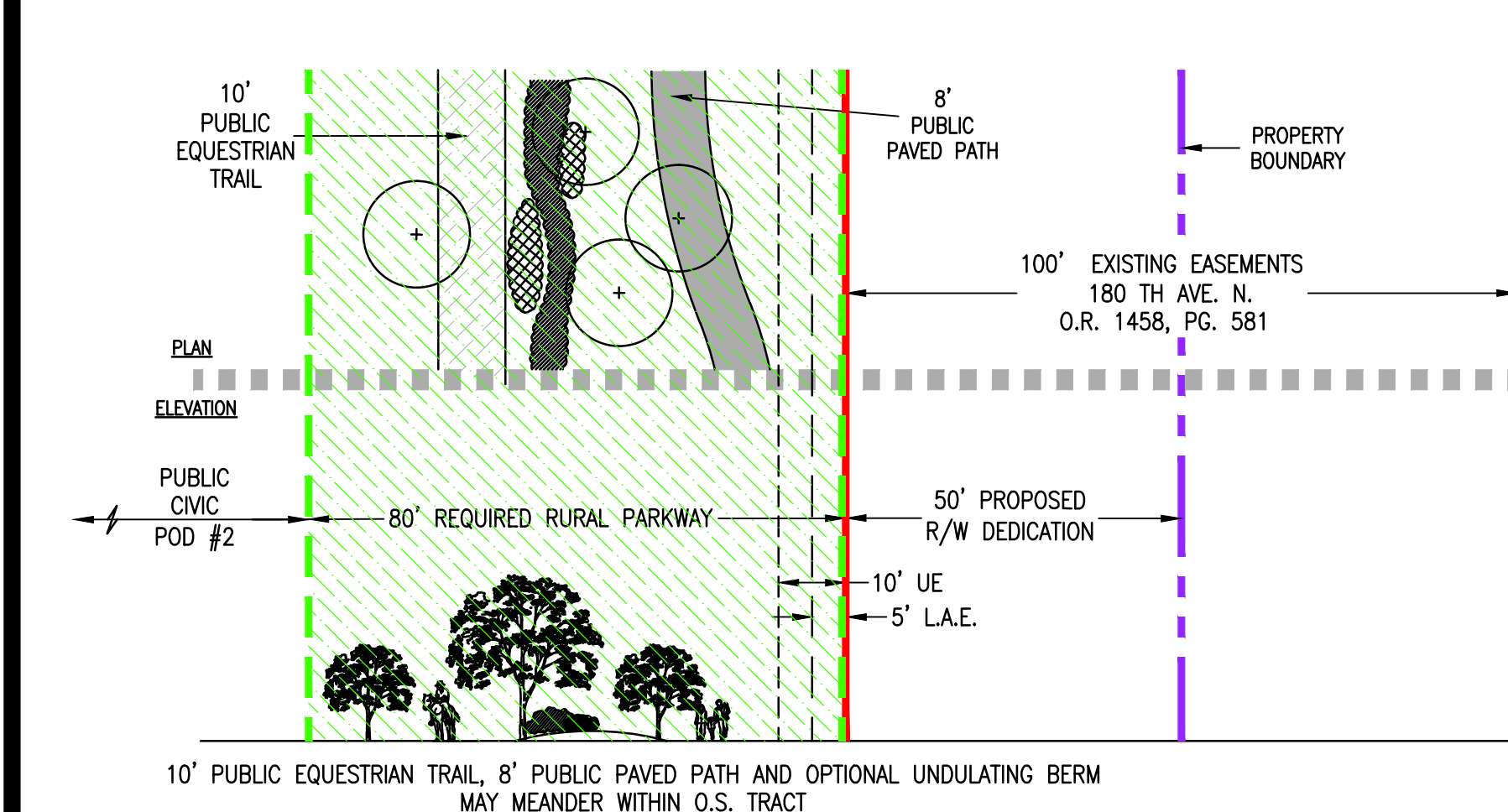
**A - 85' O.S. with 50' Rural Parkway - 60th St. N. - Pod A**



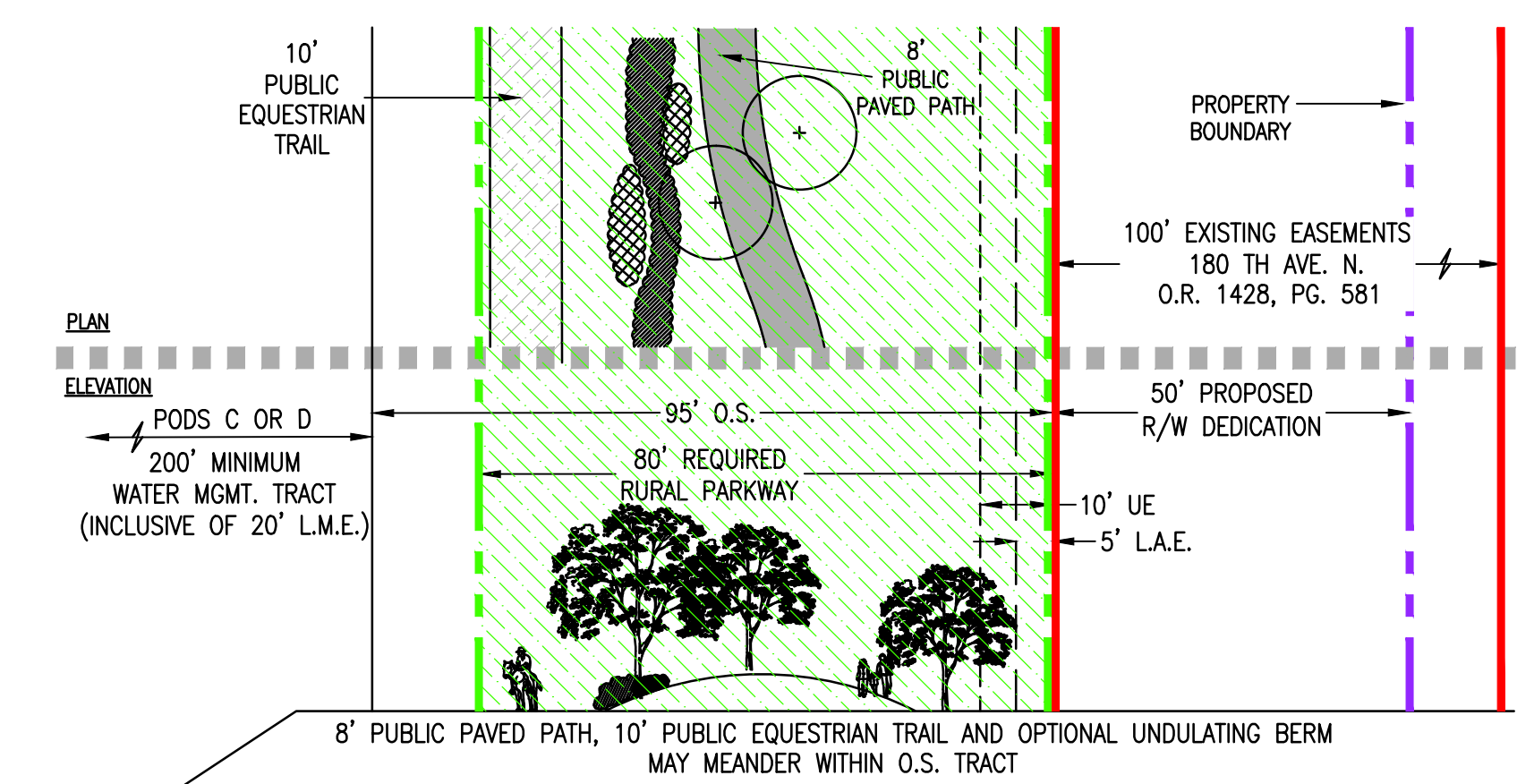
**B - 80' O.S. with 50' Rural Parkway - 190th St.- Pod B**



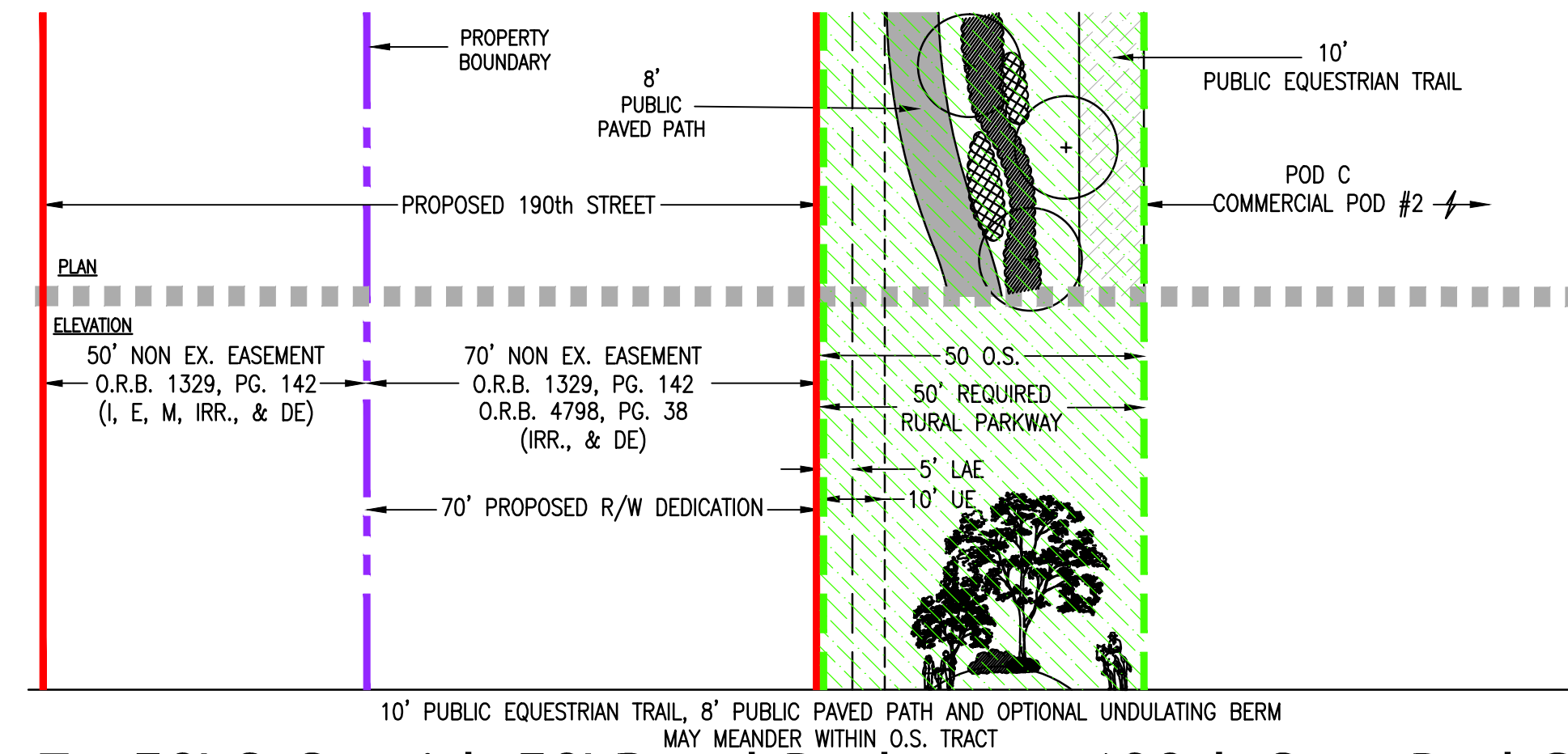
**C - 75'/90' O.S. with 50' Rural Parkway on both sides - Orange Blvd - Pods B & C**



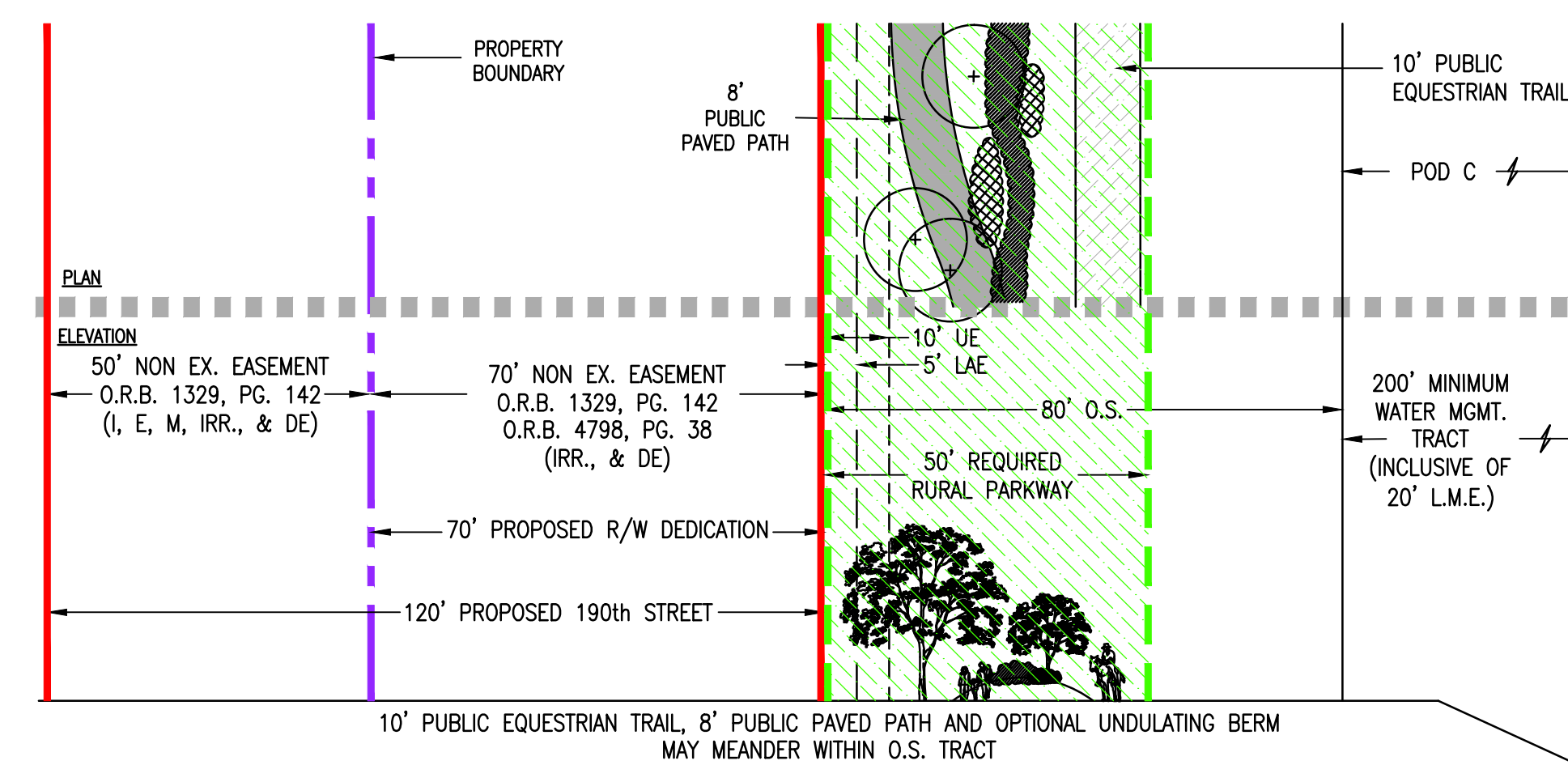
**D - 80' O.S. with 80' Rural Parkway - 180th Ave. Civic Pod #2**



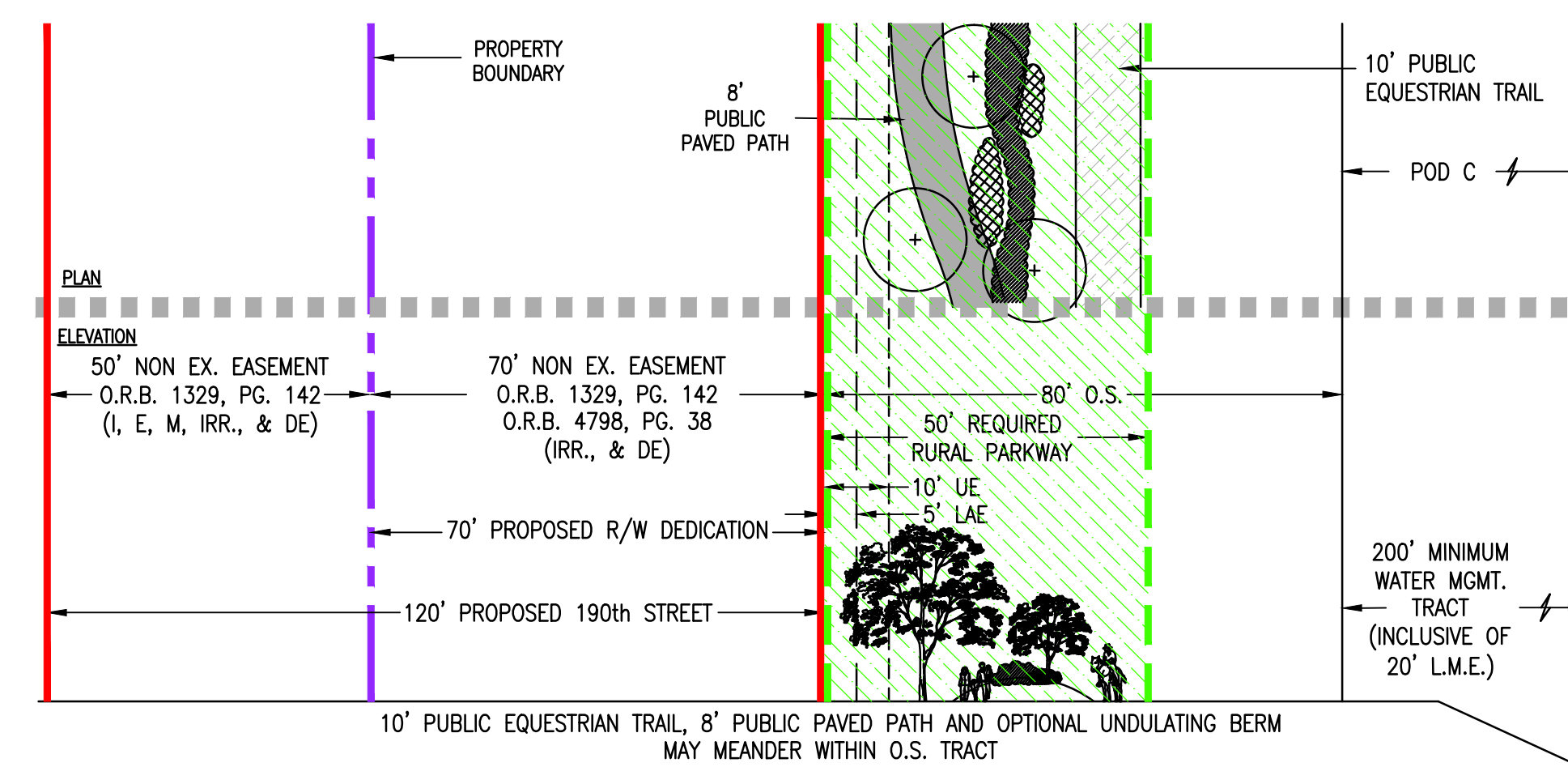
**E - 95' O.S. with 80' Rural Parkway - 180th Ave. - Pods C & D**



**F - 50' O.S. with 50' Rural Parkway - 190th St. - Pod C**



**G - 80' O.S. with 50' Rural Parkway - 190th St. - Pod C**



**H - 80' O.S. with 50' Rural Parkway - 190th St. - Pod C**

**Planting Requirements - Buffer Sections**  
**Notes:**  
 1. Landscape material, pedestrian path & equestrian trail planting within R/W Buffers & Incompatibility and Compatibility Buffers shall be (at a minimum) in accordance with Article 7, and may meander within O.S. tract.  
 1. Planting within Rural Parkways shall be consistent with the conditions of approval included in the comprehensive plan amendment (LGA-2016-017) approved by BCC on September 22, 2016.

**PALM BEACH WEST ASSOCIATES I, LLLP**  
 1600 SAWGRASS CORPORATE PKWY  
 SUITE 400  
 SUNRISE, FLORIDA 33323  
 954-753-1730

**Consultants:**  
**CIVIL ENGINEER**  
 GLH Engineering, LLC  
 1600 Sawgrass Corporate Pkwy  
 Suite 400  
 Sunrise, FL 33323  
 954-753-1730  
**SURVEYOR**  
 Sand and Hills Survey, Inc.  
 8461 Lake Worth Road, Suite 410  
 Lake Worth, FL 33467  
 (561) 209-6048  
**TRAFFIC ENGINEER**  
 Simmons and White  
 2581 Metrocentre Blvd. Suite 3  
 West Palm Beach, FL 33407  
 (561) 478-7848  
**PLANNERS**  
 Urban Design Kilday Studios  
 610 Clematis Street, Suite CU02  
 West Palm Beach, FL 33401  
 (561) 366-1100

**Project:**  
**INDIAN TRAILS GROVE - PUD**

**Palm Beach County, Florida**  
**Sheet title:**  
**PRELIMINARY Regulating Plan**

**Date:**  
**2015-07-15**

**Revisions:**  
 2015-09-28 Resubmittal  
 2016-01-25 Resubmittal  
 2016-02-22 Resubmittal  
 2016-05-23 Resubmittal  
 2016-08-29 Resubmittal  
 2016-09-26 Resubmittal  
 2016-10-24 Resubmittal  
 2016-11-28 Resubmittal  
 2016-12-15 Resubmittal

**Amendments:**

**Zoning Stamps:**

**Sheet number:**  
**PRP-2**