

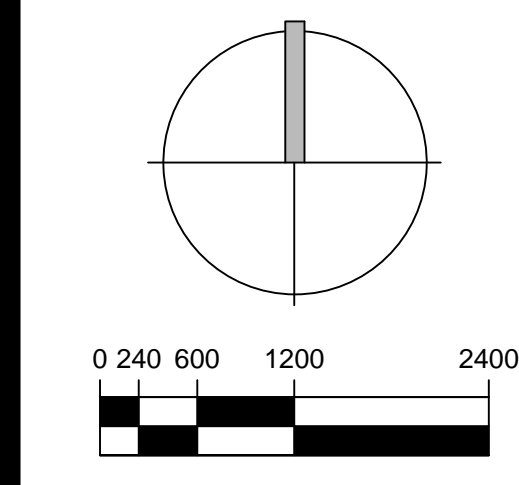
Consultants:
CIVIL ENGINEER
 GLH Engineering, LLC
 1600 Sawgrass Corporate Pkwy
 Suite 400
 Sunrise, FL 33323
 954-753-1730
SURVEYOR
 Sand and Hills Survey, Inc.
 8461 Lake Worth Road, Suite 410
 Lake Worth, FL 33467
 (561) 209-6048
TRAFFIC ENGINEER
 Simmons and White
 2581 Metrocentre Blvd, Suite 3
 West Palm Beach, FL 33407
 (561) 478-7848
PLANNERS
 Urban Design Kilday Studios
 610 Clematis Street, Suite CU02
 West Palm Beach, FL 33401
 (561) 366-1100

Project:
INDIAN TRAILS GROVE - PUD

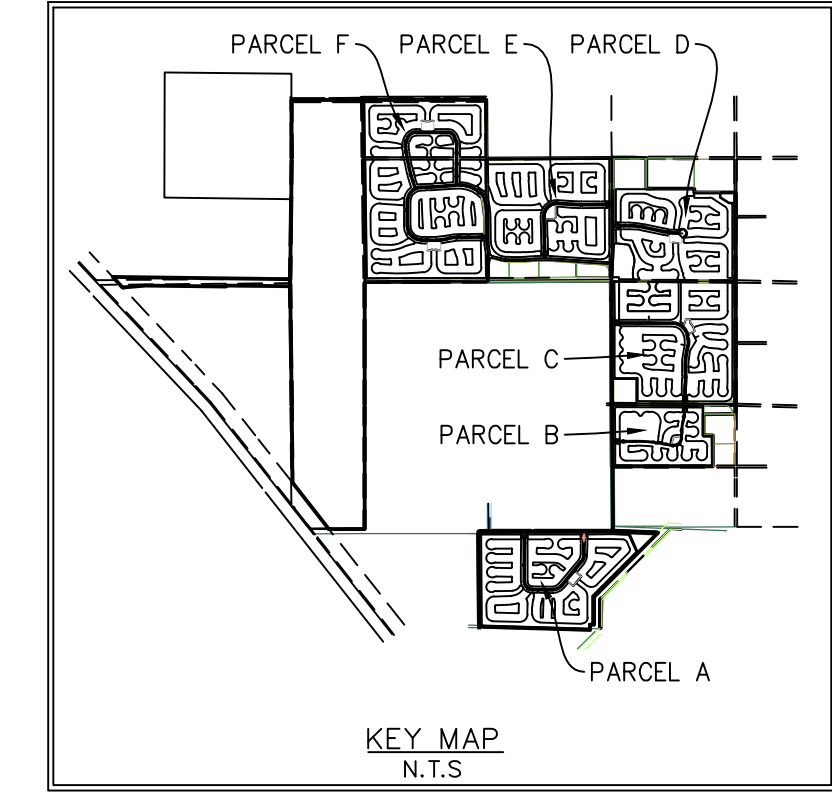
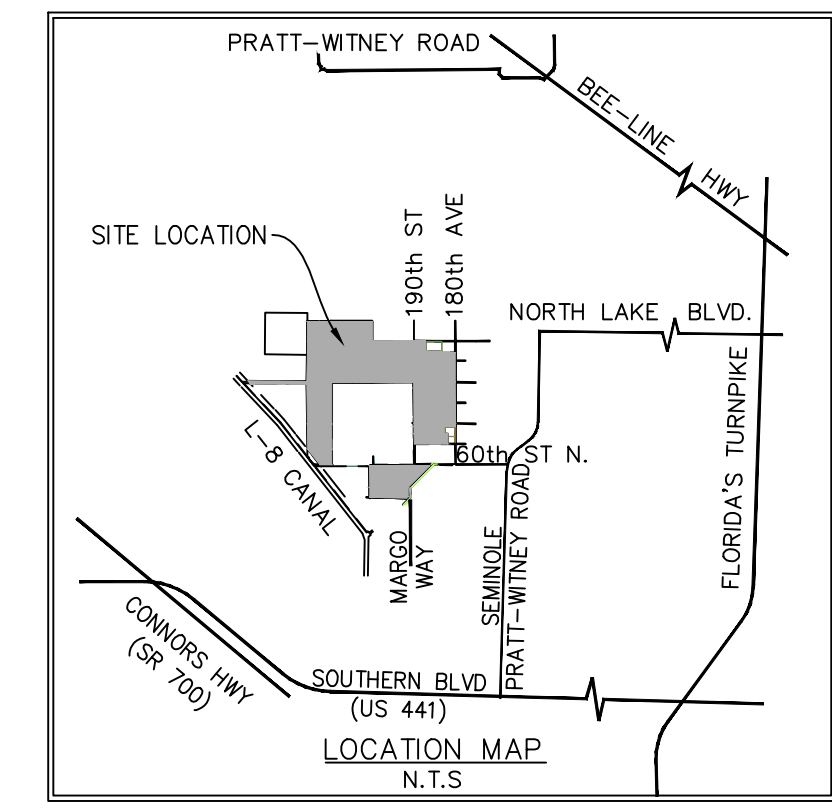
Palm Beach County, Florida
 Sheet title:
**PRELIMINARY
 Regulating Plan
 Recreation - Radius**

Date:
2016-05-23

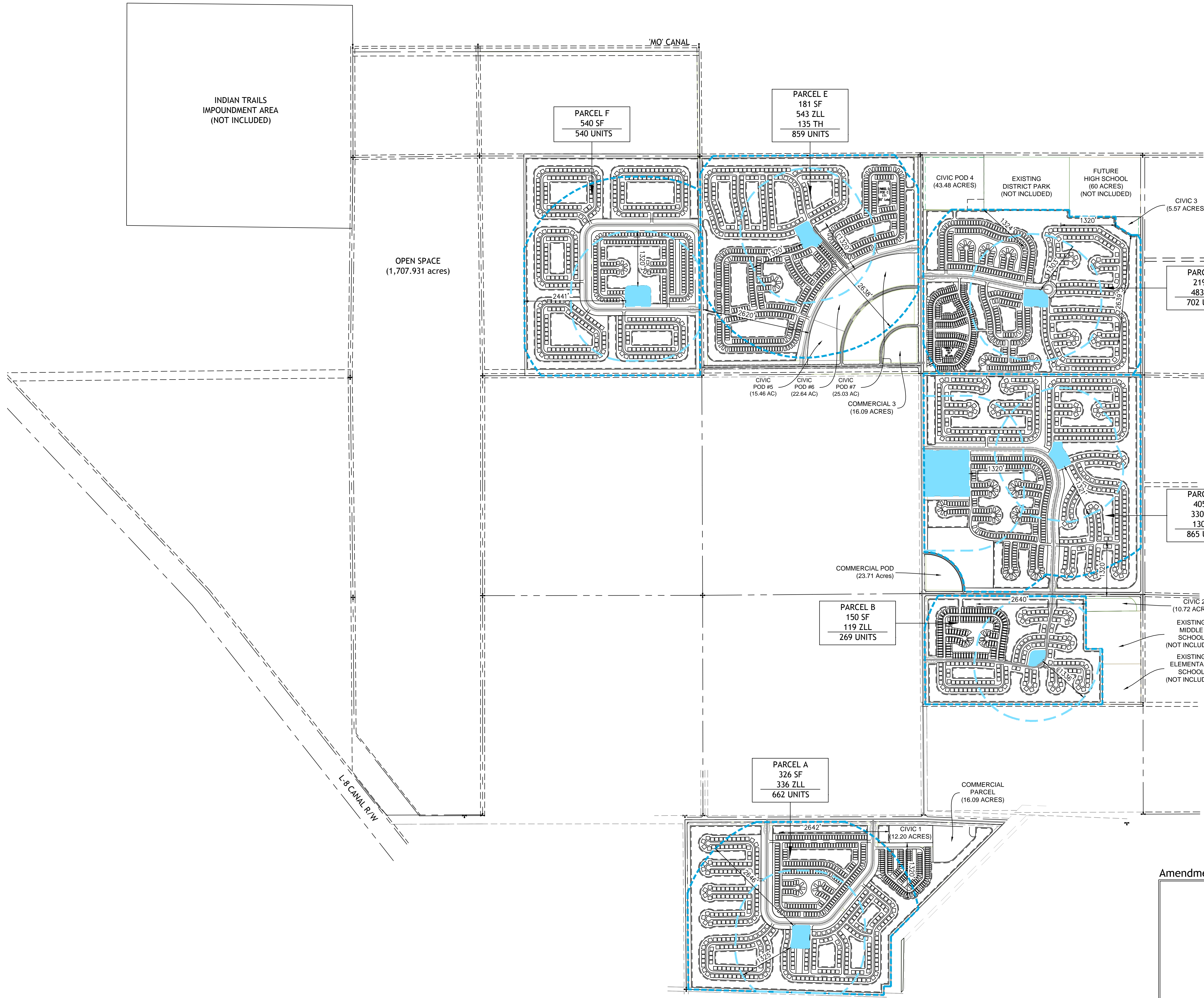
Revisions:
 2016-05-23 Resubmittal



Sheet number:
PRP-13



Parcels	RECREATION	
	Units within 1/4 mile of Recreation	Units within 1/2 mile of Recreation
Parcel A	259	606
Parcel B	164	259
Parcel C	496	866
Parcel D	273	520
Parcel E	289	261
Parcel F	277	488
Total	1758	3000



Amendments:

Zoning Stamps: