

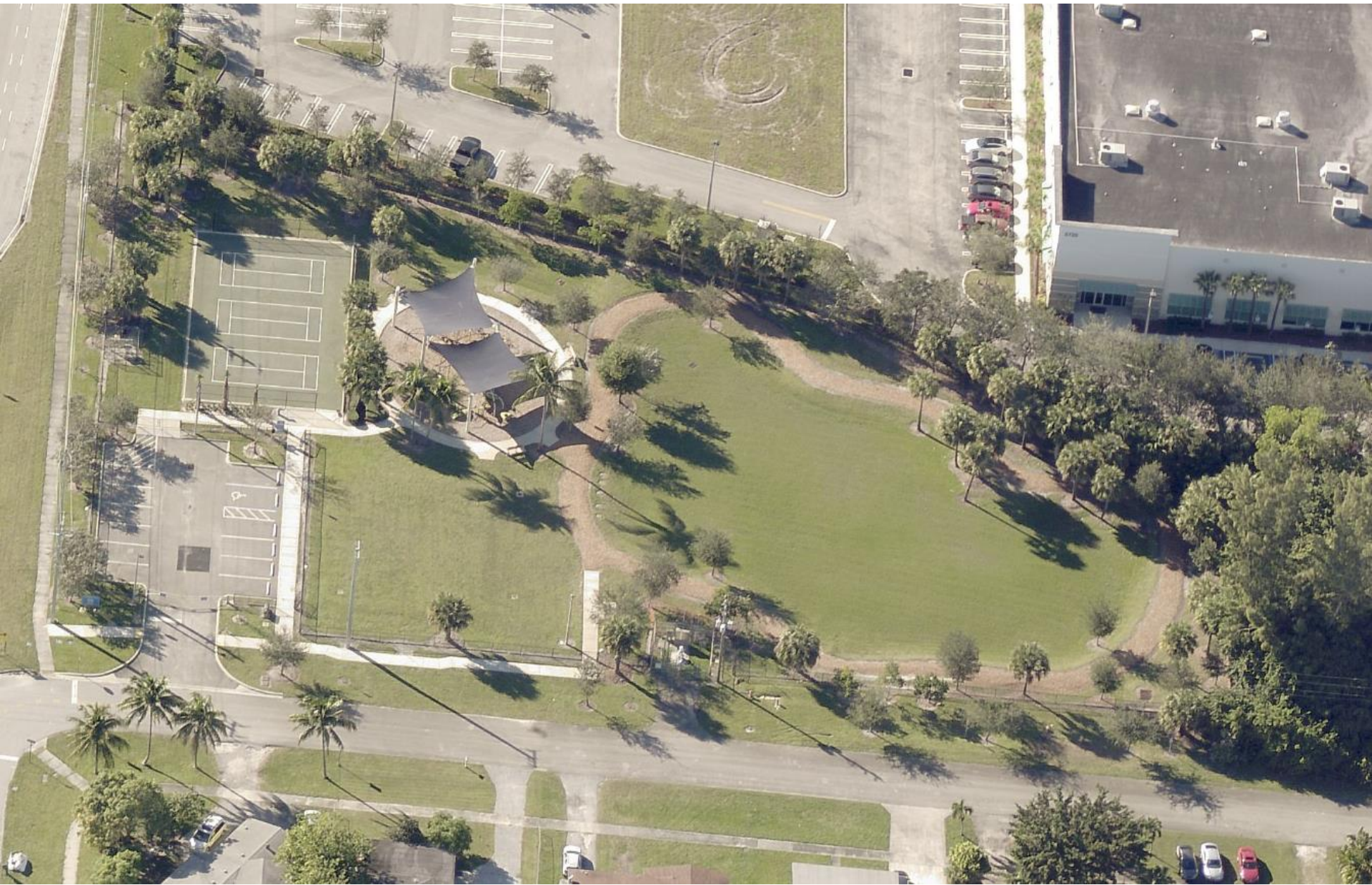
- Phase 1 of the park opened to the public in 2015 and currently consists of a playground, a basketball court and mulch walking path.
- A +/- 3,000 square foot neighborhood center was originally envisioned for Phase 2 but was never constructed.
- A total of \$5.9 million was originally allocated in Surtax funding (Community Park New Development) for the construction and expansion of neighborhood and community parks. Amount was reduced to \$5 million in 2021 during the re-estimation process to help address other project shortfalls.

- IST Project Scope Definition: “Additional CCRT neighborhood parks in collaboration with OCR and PBSO in unincorporated areas of high need.”
- Funding unit has been utilized to help fund the design and construction of Belvedere Heights Park and Paulette Burdick Park.
- Funding line also used towards design and permitting fees associated with Gramercy Park Expansion. Approximately \$610K has been expended to date.
- Design is completed.

Gramercy Park Expansion Location Map



Grammercy Park Aerial



Gramercy Park Expansion Site Plan

GRAMERCY CONCEPTUAL PLAN.DWG



We create opportunities for healthy, happy living!

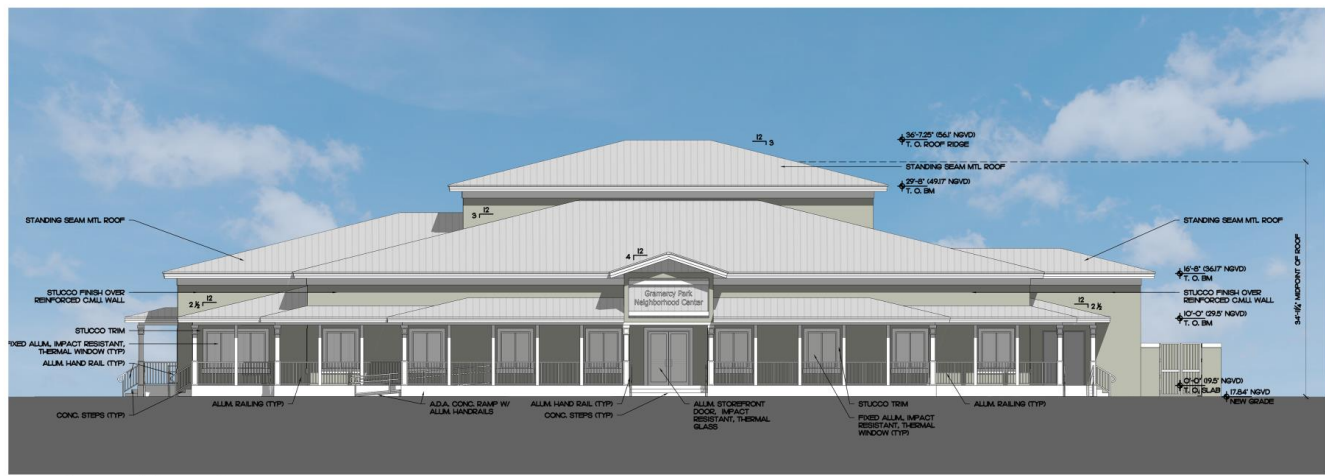


GRAMERCY PARK WEST PALM BEACH, FL 33407
CONCEPTUAL MASTER PLAN
 PALM BEACH COUNTY PARKS & RECREATION DEPARTMENT
 PLANNING, RESEARCH & DEVELOPMENT DIVISION



1/10/2023

Gramercy Park Expansion Elevation



Southeast Elevation



Northeast Elevation

Color Sample/Finishes Schedule

	SW 7014 Eider White
	256-C5
	SW 6191 Contented
	214-C2
	ENGLERT
	Preweathered Galvalume
	Doors & Windows
	MNF White



Colomé & Associates, Inc.
 Florida Registration A-0003619
 Architecture □ Planning □ Interiors
 530 24th Street □ West Palm Beach, Florida 33407 □ Telephone: (561) 833-9147 □ Facsimile: (561) 833-9356 □ E-mail: colome@colome-arch.net



PBC Parks & Recreation
Gramercy Park Neighborhood Center
 Elevations
 September 27, 2022

- Construction of an 11,000 square foot community center.
- Facility will be operated by a non profit community organization for the benefit of all Palm Beach County residents.
- Additional 4 acres (Pigtail) will be developed to include a walking trail, landscaping, dry detention and possibly fitness equipment.
- GMP of \$11,284,247.68 was received from Hatcher Construction in October.
- BCC review of the project, budget and GMP contract is approaching and will coincide with City permit issuance.

- NTP could be issued by late-January pending final permit sign-offs and prior BCC approval.
- Project expected to take 13 months to complete with substantial completion as early as February 2025.
- Department has received \$4M in Ad Valorem Capital and is expecting another \$5M from a Community Development Block Grant.
- **Type 3 transfer requests an additional \$4,000,000 from County surtax reserves to cover the current construction shortfall and to provide additional contingency.**