



The Enterprise

Inside this issue:

Environmental Resources Management Department	2
SBE Spotlight Alan Gerwig & Associates, Inc.	4
Certified and Recertified SBEs	5
Resources for Your Business	12
OSBA Team Member Angela Smith, Small Business Specialist	13

Happy New Year!! As of January 1, 2019, The Office of Small Business Assistance became the Office of Equal Business Opportunity (OEBO). On October 16, 2018, the Board of County Commissioners of Palm Beach County adopted Ordinance 2-80.20 - Section 2.80-40, establishing the County's Equal Business Opportunity program. The new program is based on the 2018 Disparity Study and establishes a Small, Minority and Women-Owned Business Enterprise (S/M/WBE) Program. Some of the highlights of the Program are as follows:

- Establishes a mandatory Small Business Enterprise (SBE) participation goal of 20% on all County contracts.
- An Affirmative Procurement Initiative (API) plan designed to encourage equitable utilization and greater participation of certified S/M/WBE businesses at the prime and subcontractor levels.
- Preference given to S/M/WBE businesses bidding as primes when responding to procurement opportunities.
- Additional points awarded to S/M/WBE primes when responding to Request for Proposals.

In addition, as of January 1, 2019, there will not be an application fee for certification, recertification or modification.

Although our name has changed, our service and commitment to our small, minority and woman-owned businesses have not. Our efforts remain to increase the participation of small, minority and women-owned business in the procurement of goods and services, and we encourage your continued efforts in learning more about doing business with Palm Beach County.





Palm Beach County Department of Environmental Resource Management

Palm Beach County's Department of Environmental Resources Management (ERM) is at the cutting edge of environmental restoration in the state of Florida. While not nearly the largest construction department in the county, ERM's construction and design contracts are often some of the most innovative in the county system due to different environmental considerations that often come into play.



The majority of ERM's construction contracts are in the Coastal Resources Management arena, performing beach renourishment and dune restoration. Other ERM projects involve environmental restoration work both in the marine/estuarine environment and freshwater habitats. ERM builds artificial reefs both offshore and in Lake Worth Lagoon by placing rock, concrete and scuttling vessels. Other restoration projects in Lake Worth Lagoon and the Loxahatchee River estuary involve both creating islands and re-grading existing islands to enhance mangrove and seagrass habitats. Freshwater restoration

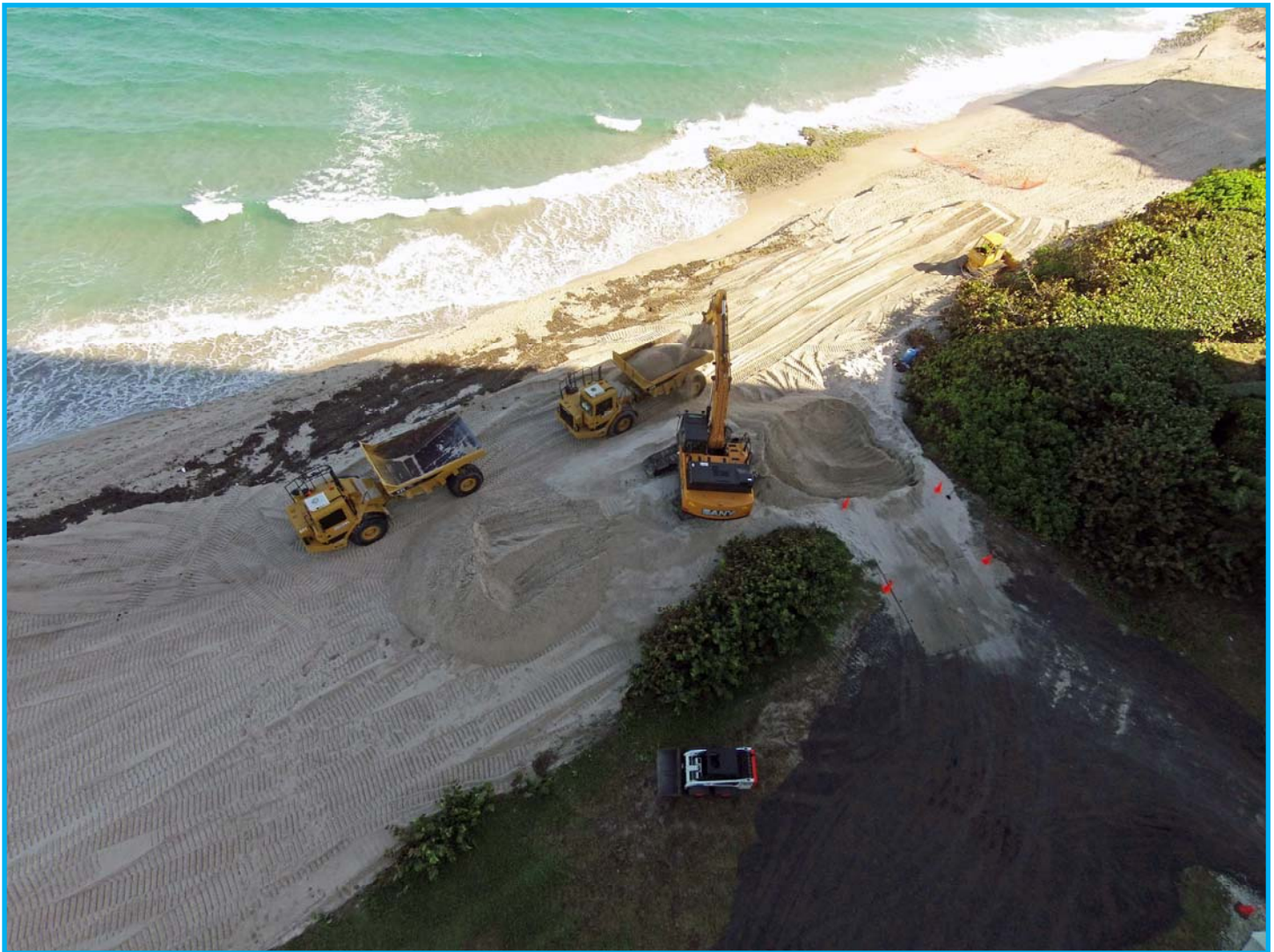
projects occur in Palm Beach County Natural Areas and involve vegetation removal and re-grading to create, restore or enhance wetland systems. Many of ERM's restoration projects also involve some component of public use facility construction, including parking lots, pathways/trails, boardwalks, piers and other wooden structures.

All these projects involve working in sensitive habitats, often alongside rare and protected plant and animal species. While ERM projects may seem daunting, they are also some of the most rewarding to work on, as many of their contractors enjoy revisiting "their" projects to see wildlife return to these restored habitats. Additionally, ERM projects often offer contractors the opportunity to flex their creative muscles, as ERM projects have won local and national awards for their innovation and construction methodologies.





Over the past five years, ERM has maintained 58% SBE participation on over \$29 million in contracts awarded, and has had a selected contractor graduate from the SBE program. Looking forward, ERM currently has almost \$19 million of grant funding for upcoming restoration projects. For more information on ERM’s projects, please visit www.pbcgov.com/erm, connect with them on Facebook and Instagram (@PBCERM) or call 561-233-2400.





SBE SPOTLIGHT: Alan Gerwig & Associates, Inc. Consulting Engineers

Alan Gerwig & Associates, Inc., is a small multidiscipline engineering firm that services both private and public clients with civil and structural engineering design and construction observation services. Although AGA is a small engineering firm, they have a wealth of experience in a variety of areas due to the makeup of senior engineering staff. Their projects vary widely in scope and market sectors, from industrial site development, to K through 12 schools, and roads and bridges to private commercial developments. Perhaps the most unique service AGA provides is in the design of concrete ready-mix plants. They also have on staff the state’s leading expert in masonry construction and provide expert forensic and construction defect investigation and reporting. A recent project they are very proud of is the sustainable site design performed for Palm Beach State College’s new Loxahatchee Groves Campus. The design incorporated pervious concrete pavement and bio swales. This serves to reduce the quantity of storm water runoff as well as the amount of pollutants that can enter the surface and ground water systems.



Alan Gerwig formed AGA in 1998 and celebrated their 20th anniversary in April of 2018. In 2003 they received their first SBE certification and have been a Palm Beach County Certified Small Business ever since. Much of AGA’s success in serving Palm Beach County is a direct benefit from being SBE certified and because of the efforts of the OEBO staff. The staff are very passionate about helping small businesses thrive and provide the tools and assistance needed to be competitive with larger businesses in the County.

AGA has nine employees, with four of them being licensed professional engineers and one engineer intern, and is in Wellington, where they first started. Whether serving as an SBE subconsultant to a larger firm on a County project or the prime consultant, their passion is the same, to deliver a successful project to their clients by bringing the science and art of engineering to each project in a way that the client will view as a success.

Welcome Small Business Enterprises!

SBE Firms Certified or Recertified between October 1 and December 31, 2018

A-1 Balers & Compactors, LLC Lizzet Serrano 561-792-3350 a1balers@msn.com	S/M/WBE* Hispanic	<ul style="list-style-type: none"> Hydraulic Pump, Hydraulic Motor, Valves, Gauges, etc. Maintenance and Repair Machinery and Heavy Hardware (Not Lawn Equipment) Maintenance and Repair Refuse and Garbage/Dumping Equipment Maintenance and Repair Welding Services, Agricultural, Heavy Industrial and Similar Equipment (Not Otherwise Classified)
All American Welding & Maintenance, Inc. John Martel 561-653-1177 Johnm.aaw@gmail.com	SBE*	<ul style="list-style-type: none"> Steel, Fabricated: Beams, Gabions, Grating, Walkways, Window Bars, and Custom-Made Steel items Tubing, Mechanical, Steel: Rectangular, Round, Square, etc. Metal Work Maintenance and Repair Services, Including Metal Refinishing Services Welding Maintenance and Repair Services: Brazing, Casting, and Soldering Metal Work Welding
Alan Gerwig & Associates, Inc. Alan Gerwig 561-792-9000 agerwig@aga-engineering.com	SBE*	<ul style="list-style-type: none"> Engineering Consulting Civil Engineering Structural Engineering
Anzco Inc. John Zak 561-699-3602 jzak@anzcoinc.com	SBE	<ul style="list-style-type: none"> Masonry, Concrete and Stucco Maintenance, Finishing, and Repair Services Including Inside Concrete Sawing and Grouting Work Wall and Ceiling Maintenance, Repair and Replacement Services, Including Drywalling Construction, Curb & Gutter (Includes Maintenance, Repair & Removal) Construction, Sidewalk and Driveway (Includes Pedestrian and Handicap Ramps)
Architecture Green, LLC Mark Beatty 561-398-2109 msb@architecturegreenllc.com	SBE	<ul style="list-style-type: none"> Architect Services, Professional, (Not Otherwise Classified), Including Consulting Interior Design, Decorating, Space Planning, Exhibits and Displays Planning, Site, Installation and Project Energy Conservation Consulting Services
Be.Lead.Grow., LLC Angela Shuttlesworth 561-889-9199 DrAMS@BeLeadGrow.com	S/M/WBE* Black	<ul style="list-style-type: none"> Business Consulting Organizational Development Consulting Public Speaking Services
Bin Medics, LLC Fred Gamble 561-500-2467 info@cleanwasteindustries.com	S/MBE* Black	<ul style="list-style-type: none"> Container Maintenance & Repair Services Cleaning Services, Steam and Pressure
Changes Wellness and Recovery Center, LLC Monique Wellons 561-899-9140 mowellons@changescenter.org	S/M/WBE* Black	<ul style="list-style-type: none"> Human Services Consulting Alcohol and Drug Detoxification and Rehab Services Alcohol and Drug Testing Services
Contin Development Group Juan Contin 561-249-4007 sai@continstudio.com	SBE*	<ul style="list-style-type: none"> Architect Services, Professional, (Not Otherwise Classified), Including Consulting Buildings - Architectural Design Planning, Site, Installation and Project Architectural Services, Non-Licensed (Not Otherwise Classified) Design Services



<p>Current Connections, Inc. Donald Sharkey 561-863-0010 office@currentconnections.net</p>	SBE	<ul style="list-style-type: none"> • Wiring and Other Electrical Maintenance and Repair Services • Electrical
<p>DeJong Construction, LLC Joyce DeJong 561-801-2871 Jdejong64@yahoo.com</p>	S/WBE	<ul style="list-style-type: none"> • Post-Tensioned Type Reinforcing Systems (for Concrete Slabs) • Steel, Reinforcing, Mesh
<p>Economic Solution Services, Inc. Derline Pierre-Louis 561-251-1265 info@EconomicSolutionServices.com</p>	S/M/WBE* Black	<ul style="list-style-type: none"> • Accounting, Auditing, Budget Consulting • Business Consulting • Accounting and Billing Services, Including Payroll Services, 3rd Party Reimbursement for Medicare, Medicaid, Private Insurance, Etc. • Accounting Services (Not otherwise Classified)
<p>Engecon Construction, Inc. Robert Waite 561-585-1565 Engeconconstruction@gmail.com</p>	SBE	<ul style="list-style-type: none"> • Construction, General: Backfill Services, Digging, Ditching, Road Grading, Rock Stabilization, etc. • Construction Management Services
<p>Engineered Design Services, LLC Craig McKenzie 813-816-0301 contact@edsengineers.com</p>	S/MBE* Black	<ul style="list-style-type: none"> • Architectural Services, Non-Licensed (Not Otherwise Classified) • Engineering Services, Non-Licensed (Not Otherwise Classified), Including Consulting • Engineering Consulting • Transportation Consulting • Bridge Engineering • Civil Engineering • Electrical Engineering, Including Cogeneration Design Services • Engineering Services, (Not Otherwise Classified) • Facilities Design Services, Engineering • Mechanical Engineering • Structural Engineering
<p>Habana Excavating, Inc. Henry Rodriguez 561-689-0058 Habanaexcavating@comcast.net</p>	SBE	<ul style="list-style-type: none"> • Clearing and Grubbing Services • Excavation Services • Hauling Services
<p>Hillers Electrical Engineering, Inc. Paul Hillers 561-451-9165 phillers@hillersee.com</p>	SBE	<ul style="list-style-type: none"> • Programming Services, Computer, Including Mobile Device Applications • System Implementation and Engineering Services • Control Systems Engineering • Electrical Engineering, Including Cogeneration Design Services • Instrumentation Engineering • Inspection Services, Construction Type • Inspection Services, Electrical Instrumentation and Control
<p>Hi-Tech Roofing & Sheetmetal, Inc. Michael Daley 561-586-3110 estimating@hi-techroofing.com</p>	SBE*	<ul style="list-style-type: none"> • Roofing, Gutters, and Downspouts Maintenance and Repair • Roofing and Siding • Roofing Consultant
<p>Irma Robinson, Inc. Irma Robinson 312-787-1287 irobinson@iri-cepco.com</p>	S/M/WBE* Hispanic	<ul style="list-style-type: none"> • Interior Design Services (Architectural) • Space Planning, Interior Design • Drafting Services • C.I.P. Project Management and Administration
<p>Kolmio Global, Inc. TaRhonda Harvey 561-762-7554 info@kolmioglobal.com</p>	S/M/WBE* Black	<ul style="list-style-type: none"> • Graphic Arts Services (Not Printing) • Web Page Design, Maintenance and Management Services • Business Consulting • Marketing Consulting • Graphic Design Services for Printing

LEPTON WAVE d/b/a TECH SOURCE Hal Brunman 561-747-8500 techsourcehal@gmail.com	SBE*	<ul style="list-style-type: none"> • Police Test Equipment and Supplies • Police Equipment Maintenance and Repair
Lidberg Land Surveying, Inc. David Lidberg 561-746-8454 kristen@lidberg.net	SBE*	<ul style="list-style-type: none"> • Surveyor Services, Land • Mapping & Geographical Information Systems (GIS) Services
Mark Escoffery, P.A. Mark Escoffery 561-627-1404 escofferypa@gmail.com	S/MBE* Black	<ul style="list-style-type: none"> • Accounting, Auditing, Budget Consulting • Audit Services • Certified Public Accountant (CPA) Services • Tax Services, Including Tax Preparation, Advisory Services, etc.
Madsen-Barr Corporation John Barr 561-753-6363 madsenbarr@earthlink.net	SBE	<ul style="list-style-type: none"> • Excavation Services • Construction, Utility and Underground Projects • Maintenance and Repair, Utility and Underground Projects
Mids, Inc. Roger Manning 561-586-6220 Roger@BanyanPrinting.com	SBE	<ul style="list-style-type: none"> • Mailing Services (Includes, Addressing, Collating, Packaging, Sorting and Delivery) • Graphic Design Services for Printing • Bar Code Printing • Bumper Stickers, etc.: Printed • Business Cards Printed • Card Printing: Tab, Post, Form, etc. • Check Printing • Continuous Form Printing • Copying Services (Reproduction) • Decal Printing • Envelope and Mailer Printing • Forms Printing (Not Continuous) • Letterheads Printed • Numbering Services, Printing • Offset Printing, Large Production Runs (Quant. up to \$100,000); 4 Color Process or Close Registration Required • Offset Printing, Booklets, Saddle Stitch Binding (Quantities under 100,000): Books and Magazines • Paper Cutting, Drilling, Folding, Punching, Shredding, Trimming, etc. • Printing on Recycled Stock • Print on Demand Printing Services (Including Print and Distribute Services) • Security Paper, Custom Printed (Quan. over 100,000) • Snap Out Form Printing • Specialty Printing: Die Cutting, Laser, Plastic, Thermography, etc. • Tickets, Special Labels and Tapes, Printed (Not Continuous), For Prescription Drugs, etc., (Pressure Sensitive or Dry Gummed Adhesion Flats, Rolls)
N & P Construction and Development, Inc. Orestes Piedra 561-318-7575 Apiedra80@yahoo.com	S/MBE Hispanic	<ul style="list-style-type: none"> • Clearing and Grubbing Services • Demolition Services • Excavation Services • Construction Management Services • Grading (Of Parking Lots, etc. - Not Road Building)



<p>P & L Corporate Solutions, LLC Paula Humber 954-461-3357 phumber@pl-cs.com</p>	<p>S/M/WBE* Black</p>	<ul style="list-style-type: none"> • Manuals: Parts, Personnel, Policy, Purchasing, Training, etc. (Not Otherwise Classified) • Administrative Support, Consulting Services • Compliance Consulting, including ADA • Education and Training, Consulting • Employee Benefits Consulting • E-mail Archiving and Records Management Consulting • Human Resources, Relations Consulting • Management Consulting • Marketing Consulting • Research and Evaluation, Human Services, Including Productivity Audits
<p>Pacifica Engineering Services, LLC Wesley Foster 561-693-8093 Wesley.foster@pacificaes.com</p>	<p>S/MBE* Black</p>	<ul style="list-style-type: none"> • Geotechnical – Soils • Testing Services • Consulting Services (Not Otherwise Classified) • Environmental Consulting • Geological Consulting and Study • Geotechnical Engineering • Inspecting, General/Engineering • Lead and Asbestos Inspection Services
<p>Palmwood Corp., Inc. John Cleary 561-844-8740 palmwood@bellsouth.net</p>	<p>SBE</p>	<ul style="list-style-type: none"> • Site Clean-Up, Pre-Construction • Site Clean-Up, Post-Construction • Site Work • Clearing and Grubbing Services • Pile Driving Services • Construction, Hike and Bike Trail • Demolition Services • Construction, Pipeline, Including Aerial Crossings • Construction, Sewer and Storm Drain • Construction, Special Foundation • Construction and Upgrades, Wastewater Treatment Plant • Lime Slurry Removal Services • Maintenance and Repair, Bridges • Maintenance and Repair, Canal • Maintenance and Repair, Sidewalk and Driveway Including Removal • Construction Management Services • Breakwater Construction, Maintenance, and Repair • Construction Services, General Marine • Reef Services, Artificial • Waterfront Construction Services: Piers, Docks, Decking, etc., Including Maintenance and Repair • Construction Equipment (Not Otherwise Classified) Rental or Lease • Cranes and Buckets Rental or Lease • Earth Moving Equipment, Graders, Dozers, Loaders, etc. Rental or Lease • Equipment with operator, Rental or Lease
<p>PB Marketing Group, LLC Patrick Benoit 561-658-9152 patrick@printingandbranding.com</p>	<p>S/MBE* Black</p>	<ul style="list-style-type: none"> • Badges, Emblems, Name Tags and Plates, Etc. • Display, Exhibit, And Promotional Materials • Promotional Products – Advertising Specialties • Display, Exhibit, and Promotional Items • Awards, Trophies, Collectibles, etc. • Printing and Typesetting Services
<p>Power of Ten Consulting Patti Hamilton 561-373-1264 pattihamilton@msn.com</p>	<p>S/WBE*</p>	<ul style="list-style-type: none"> • Business Consulting • Public Relations Consulting • Marketing Consulting • Strategic Planning and Consulting Services

Sequil Systems, Inc. Jeffrey Conley 561-921-0900 jeff@sequil.com	SBE	<ul style="list-style-type: none"> • Energy Conservation Consulting Service
Smith Engineering Consultants, Inc. Larry Smith 561-616-3911 larry@smithengineeringconsultants.com	SBE*	<ul style="list-style-type: none"> • Engineering Consulting • Electrical Engineering Including Cogeneration Design Services • Electrical Engineering • Engineer Services, Professional • Mechanical Engineering
Southern Printing & Marketing, Inc. William Pittard 561-968-6661 soprma@bellsouth.net	SBE*	<ul style="list-style-type: none"> • Promotional Products - Advertising Specialties • Graphic Design Services for Printing • Printing and Typesetting Services • Business Cards Printed • Offset Printing, General, Small Press Work (Quan. up to 25,000), One or More Colors, No 4 Color Processes or Large Solids or Close Registration; • Offset Printing, Booklets, Saddle Stitch Binding (Quantities under 100,000): Books and Magazines • Silk Screen Printing
Statewide Construction Services, Inc. William Larue 561-333-1865 Concreteguy77@yahoo.com	SBE*	<ul style="list-style-type: none"> • Construction, Sidewalk and Driveway (Includes Pedestrian and Handicap Ramps) • Construction, Vertical, Concrete, Pour-In-Place, Form/Place/Finish • Maintenance and Repair, Sidewalk and Driveway Including Removal • Concrete
Stellar Business Development Systems, LLC Pamela Frazier 561-517-8003 Pamela@StellarBDS.com	S/M/WBE* Black	<ul style="list-style-type: none"> • Business Consulting • Public Relations Consulting • Community Development Consulting • Marketing Consulting • Security/Safety Consulting • Transportation Consulting • Decorating Services for Holidays, Parties or Events
Stephen L. Boruff A1A Architects & Planners, Inc. Erin Nastri 561-471-8520 sboruff@sba-arch.com	SBE	<ul style="list-style-type: none"> • Architect Services, Professional, (Not Otherwise Classified), Including Consulting • Planning, Urban, Community, Regional, Area wide and State
Superior Waterway Services, Inc. Chris York 561-844-0248 cyork@superiorwaterway.com	SBE	<ul style="list-style-type: none"> • Environmental Consulting Services • Aquatic Plants • Lakes, Rivers and Other Waterways Management Consulting Services • Weed and Vegetation Control (Including Trees, Shrubs and Aquatic Weed Control)
Sustainscape, Inc. Tiffany Hughes 561-245-5305 tiffany@sustainscapeflorida.com	S/WBE	<ul style="list-style-type: none"> • Environmental Consulting • Horticultural Consulting • Landscaping Consulting • Fertilizer and Soil Products • Erosion Control Services • Flood Control Services • Flora Protection Services • Grounds and Roadside Maintenance: Mowing, Edging, Plant, Not Tree Trimming, etc. • Landscaping, Including Design, Fertilizing, Planting, etc., Not Grounds Maintenance or Tree Trimming Services • Pest Control, Other Than Buildings, Including Spraying Trees and Shrubs • Tree Trimming and Pruning Services • Weed and Vegetation Control, Including Trees, Shrubs and Aquatic Weed Control



<p>Synergy Solutions Group, LLC Tradrick McCoy 561-304-9066 info@synergysolutionsgroup.org</p>	<p>S/MBE* Black</p>	<ul style="list-style-type: none"> Accounting and Billing Services, Including Payroll Services, 3rd Party Reimbursement for Medicare, Medicaid, Private Insurance, Etc. Notary Public Services Tax Services, Including Tax Preparation, Advisory Services, etc. Health/Hospitalization Insurance (Including Dental and Visual) Insurance and Insurance Services Life Insurance Process Server Services
<p>Taste and See Creations d/b/a Serena Cerbone Serena Cerbone 561-255-0591 nfo@tasteandseecreations.com</p>	<p>S/M/WBE* Black</p>	<ul style="list-style-type: none"> Fruits, Citrus Table coverings, Food Service Cakes, cookies, and pastries Doughnuts, Fried Pies, and Bagels Muffins Pies Desserts, Except Cake and Pastry Food Service Consulting
<p>T C L M Enterprise, Inc. Christina Love Basile 561-248-1470 tclmtina@gmail.com</p>	<p>SBE</p>	<ul style="list-style-type: none"> Excavation Services Construction, Utility and Underground Projects Maintenance and Repair, Utility and Underground Projects
<p>The Carpenter's Son Inc. Roderick McClendon 561-452-2191 remmclendon@aol.com</p>	<p>S/MBE* Black</p>	<ul style="list-style-type: none"> Doors and Windows Finishes: Flooring, Wall And Ceiling, Etc. Maintenance and Repair, Non-Residential Building Maintenance and Repair, Residential Buildings, Including Single Family Homes and Apartments Maintenance and Repair, Commercial and Institutional Building Carpentry, Maintenance and Repair Services Door Installation, Metal, Maintenance and Repair Services Door Installation, Wood, Maintenance and Repair Services Glass Replacement, Maintenance and Repair Services Building Maintenance Services (Not Otherwise Classified) Window, Metal, Installation, Maintenance and Repair Services Window, Wood, Installation, Maintenance and Repair Services Carpentry Concrete Painting and Wallpapering
<p>Thompson & Youngross Engineering Consultants, LLC Daniel Thompson 561-274-0200 tec@tecfla.com</p>	<p>SBE</p>	<ul style="list-style-type: none"> Electrical Engineering Mechanical Engineering
<p>Tierra South Florida, Inc. Raj Krishnasamy 561-719-6902 info@tierrasf.com</p>	<p>S/MBE* Asian</p>	<ul style="list-style-type: none"> Core Drilling Services, Pavement Geotechnical Foundation Drill Services Geotechnical Drilling and Boring Services Testing, Asphalt Density Quality Control Testing Services for Construction
<p>Tomasello Consulting Engineers, Inc. Richard Tomasello 561-575-3910 dixietom@aol.com</p>	<p>SBE</p>	<ul style="list-style-type: none"> Civil Engineering Environmental Engineering Water Supply Plant Operating and Monitoring System Services
<p>Triton Electric Company James Joyce 561-882-0909 admin@tritonelectric.net</p>	<p>SBE</p>	<ul style="list-style-type: none"> Wiring and Other Electrical Maintenance and Repair Services Electrical

<p>UR3ANA, LLC Yexsy Schomberg 561-602-1225 yexsy@UR3ANA.com</p>	<p>S/M/WBE* Hispanic</p>	<ul style="list-style-type: none"> • Planning, Urban, Community, Regional, Area wide and State • Business Consulting • Real Estate and Land Consulting, Including Land Survey Consulting and Land Developers • Urban Planning Consulting
<p>uSaveLED, LLC Harry Zuker 561-672-7020 hzuker@usaveled.com</p>	<p>SBE*</p>	<ul style="list-style-type: none"> • Lamps: Fluorescent, Incandescent, Mercury Vapor, Quartz and Sodium Vapor • Lighting Fixtures, Indoor: All Kinds and Parts, Including Lampholders and Recycled Types • Lighting, Area, Pole or Standard Mounted, Parking Lots, etc. • Lighting Fixtures, Outdoor: Floodlights, Spotlights, Yard Lights, and All Other Weatherproof Fixtures, Except Streetlights, Including Recycled Types • Lighting, Solar Powered • Lighting Units, Emergency, Battery Operated; and Batteries • Street and Highway Lighting Luminaires, Accessories and Parts • Lamps, Lighting, Lens, and Signals, Interior and Exterior • Lamps and Lighting, Interior and Exterior • Stadium Lighting Equipment and Light Poles • Lighting Distribution Hardware: Borderlight Cables, Pipe Battens, Plugging Strips and Boxes, Wall and Floor Pockets, etc. • Lighting Instruments: Border and Cyclorama Striplights, Follow Spotlights, Floodlights, Special Effects Lighting, Spotlights, etc. • Lighting Systems, Complete • Lighting, Interior, Exterior, Architectural Services • Lighting Services for Parks, Athletic Fields, Parking Lots, etc.
<p>Williams Professional Water Restoration Service, LLC Tena Williams 866-491-4324 WPWRS1965@gmail.com</p>	<p>S/MBE* Black</p>	<ul style="list-style-type: none"> • Carpet Cleaning Services • Fire and/or Water Damage Restoration Services • Remediation Services, Environmental, Including Rehabilitation Services Hazardous Waste and Mold Remediation
<p>Wuyke Enterprises, LLC Raiza Iverson 561-577-2884 Raiza.wuyke@gmail.com</p>	<p>S/M/WBE* Hispanic</p>	<ul style="list-style-type: none"> • Janitorial and Custodial Services

Index

- SBE = Small Business Enterprise
- WBE = Woman Business Enterprise
- MBE = Minority Business Enterprise
- * Newly Certified



Resources for Your Business

AGENCY	SERVICES PROVIDED	PHONE	WEBSITE
Center For Enterprise Opportunity (CEO) Formerly Business Loan Fund Of The Palm Beaches	Entrepreneurial institute program that provides easy access to in-house general and specific subject matter experts at low or no cost to the business customer. Areas of expertise include, but are not limited to, accounting, business management, business development, relationship marketing, branding, customer service, business structuring and strategy.	561.478.2337	www.ceoventures.org
Florida Department Of Business And Professional Regulation (DBPR)	Licensing and regulating businesses and professionals in the State of Florida, such as cosmetologists, veterinarians, real estate agents and pari-mutuel wagering facilities.	850.487.1395	www.Myfloridalicense.com/dbpr
Florida Department Of Agriculture And Consumer Services	Licensing for security firms, plant/agriculture industry, food industry, etc.	800.435.7352	www.freshfromflorida.com
Florida Department Of Revenue	General tax administration and property tax oversight.	800.352.3671	www.Dor.myflorida.com
Global Business Development Center	Business coaching and workshops, leadership sales and service training, virtual office and administrative services	561.894.4500	www.globalbusinessdevelopmentcenter.com
Paragon FL	Paragon services include, but are not limited to, financial assistance, tools, support and advocacy for businesses from underserved communities.	561.282.1888	www.paragonfl.org
PBC Consumer Affairs	Investigate, negotiate, and mediate consumer complaints against businesses with a goal of avoiding any future conflicts and misunderstandings. We protect consumers and businesses from unlawful, deceptive and unfair trade practices by the enforcement of existing ordinance laws and regulations.	561.712.6600	www.pbcgov.com/publicsafety/consumeraffairs
PBC Engineering and Public Works	Roadside Vendor Permits, Certificates of Competency for Specialty Trades, Contractor Certification, etc.	561.233.5000	www.pbcgov.com/engineering
PBC Department Of Economic Sustainability	Bonds, Grants, Loans, Taxes, Program Coordination, etc.	561.233.3600	www.pbcgov.com/des
PBC Tax Collector	Business Tax Receipts (Previously named Occupational License).	561.355.2264	www.pbctax.com
SCORE	Small business advice, business mentoring, resource tools, templates, etc.	561.833.1672	www.score.org
Small Business Development Center (SBDC) at Florida Atlantic University	Assist small businesses with financial, marketing, production, organization, engineering and technical problems and feasibility studies. Special SBDC programs and economic development activities include international trade assistance, technical assistance, procurement assistance, venture capital formation and rural development.	954.762.5235	https://sbdc.fau.edu
TED Center	Technical support, information technology, real estate development, training, business networking and access to funding.	561.265.3790	www.tedcenter.org

Office of Equal Business Opportunity
50 S. Military Trail, Suite 202
West Palm Beach, FL 33415
Phone: 561-616-6840
Fax: 561-616-6850



www.pbcgov.com/oebo



Palm Beach County
Board of County Commissioners

Tonya Davis Johnson, Director
Voice: 561-616-6840, eFax: 561-656-7275
tjohnson@pbcgov.org

Vicky Cronell, Small Business Development Specialist I
Voice: 561-616-6843, Fax: 561-616-6850
vcronell@pbcgov.org

Allen Gray, Manager
Voice: 561-616-6842, Fax: 561-656-7270
agray@pbcgov.org

Deirdre Kyle, Small Business Development Specialist II
Voice: 561-616-6854, Fax: 561-233-2245
dkyle@pbcgov.org

Angela D. Smith, Small Business Development Specialist II
Voice: 561-616-6852, eFax: 561-656-7272
asmith1@pbcgov.org

Angie Whitaker, Small Business Development Specialist II
Voice: 561-616-6849
awhitake@pbcgov.org

SMALL BUSINESS DEVELOPMENT SPECIALIST II, ANGELA D. SMITH



Angela D. Smith is a graduate from Florida Agricultural and Mechanical University where she received her Bachelor of Science Degree in Business Economics. She has gained over 20 years of working knowledge in the field of Civil Rights and Equal Opportunity as a Compliance Investigator for government entities such as the Florida Commission on Human Relations and Palm Beach County Office of Equal Opportunity, as well as non-profit organizations such as the Legal Aid Society of Palm Beach County. Her passion for equality continues, affording her the opportunity to work with a great team at the Palm Beach County Office of Equal Business Opportunity (OEBO) as a Small Business Development Specialist (SBDS) II. At the OEBO, she performs certification reviews of new and recertified Small, Minority and/or Woman-Owned Businesses, conducts compliance reviews of contracts that utilize those S/M/WBE businesses, and occasionally serves as a speaker on panel discussions on OEBO programs and S/M/WBE utilization.