

Palm Beach County (County) makes no representation or warranties whatsoever on the attached / enclosed information reflected herein pertaining to easements, rights-of-way, setback lines, reservations, agreements, and other similar matters. The information provided herein should not be relied upon by the requesting party to confirm the existence / non-existence of facts contained herein.

RES. 92-1630
 - CHANGING THE NAME OF NW 22 AVE. TO GATEWAY BLVD FROM JOE RD. TO CONGRESS AV.

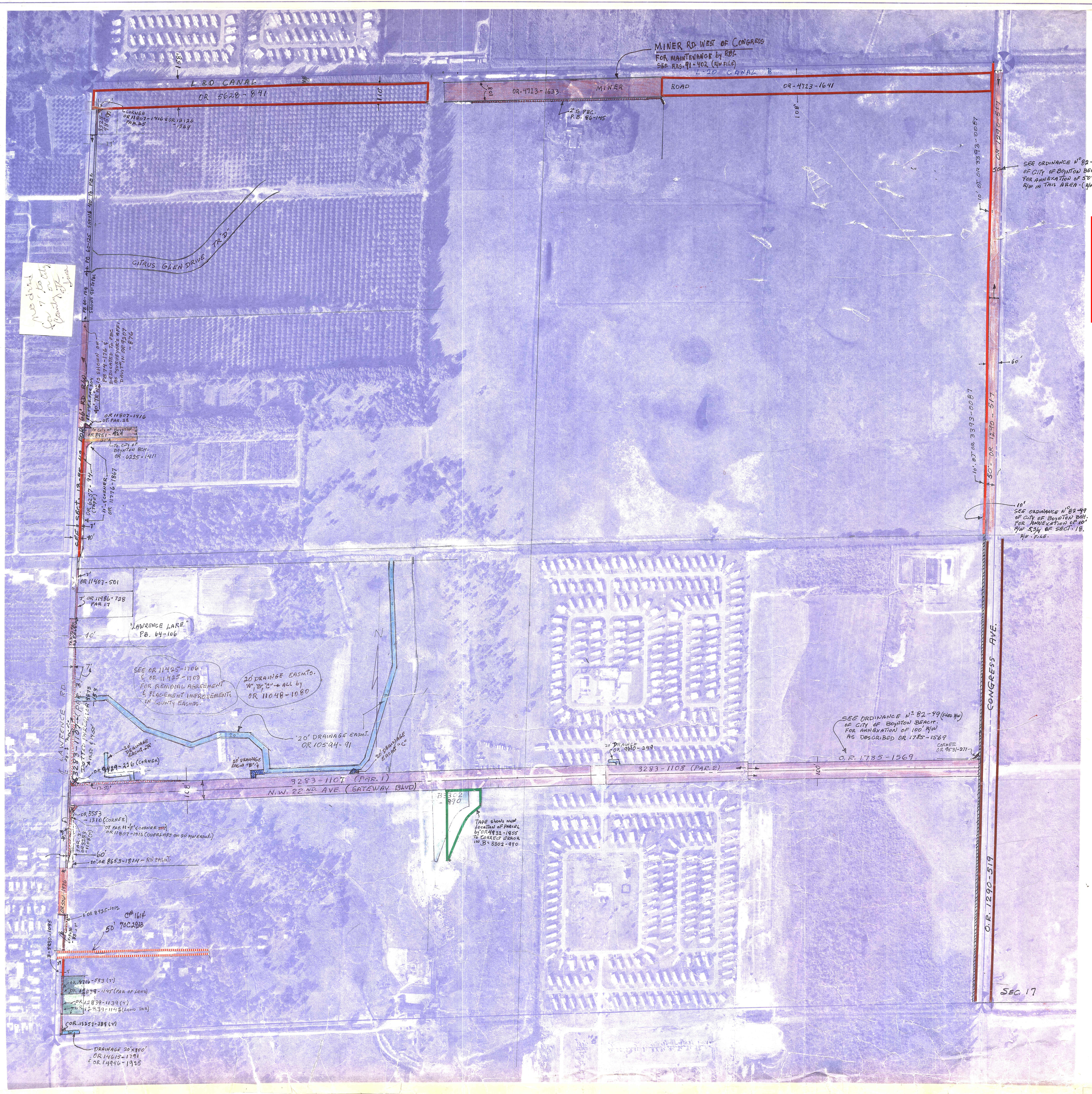
FOR TEMPORARY CONST. EASMT. IN GATEWAY BLVD SEE OR 9610-249 & ALSO OR. 9668-1105

NOTE:
 NOT TO BE REPRODUCED IN ANY FORM EXCEPT BY EXPRESS WRITTEN CONSENT FROM THE PALM BEACH COUNTY ASSESSOR.
 Information shown herein is compiled from the best available sources and CANNOT be used for surveys or land transfer of any type.

PALM BEACH COUNTY
 5.37
 PLANNING DEPARTMENT
 COUNTY ASSessor

PAGE	TWP	SEC	SP
43	45	18	1000

SCALE 1"=200'



No drive for 7' to City County Office

TAPE SHOWS NEW LOCATION OF PAVEMENT FOR 11' EASMENT SEE OR 11807-1416 COVERS UP ON 20' EASMENT

SEC. 17