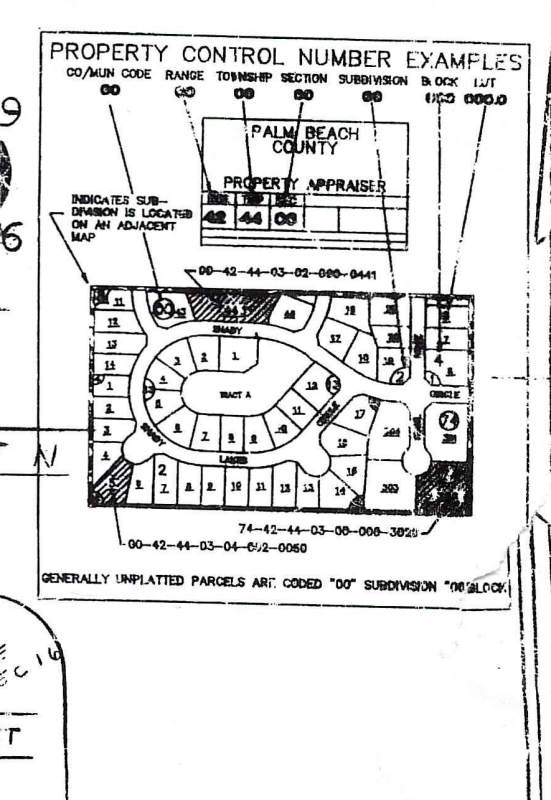
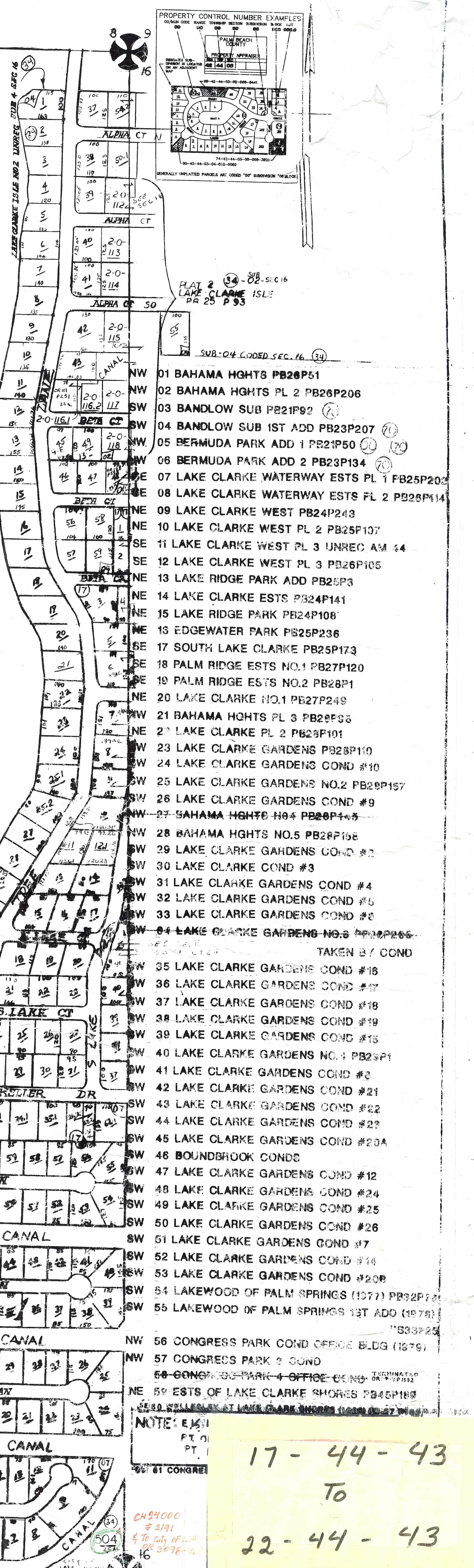
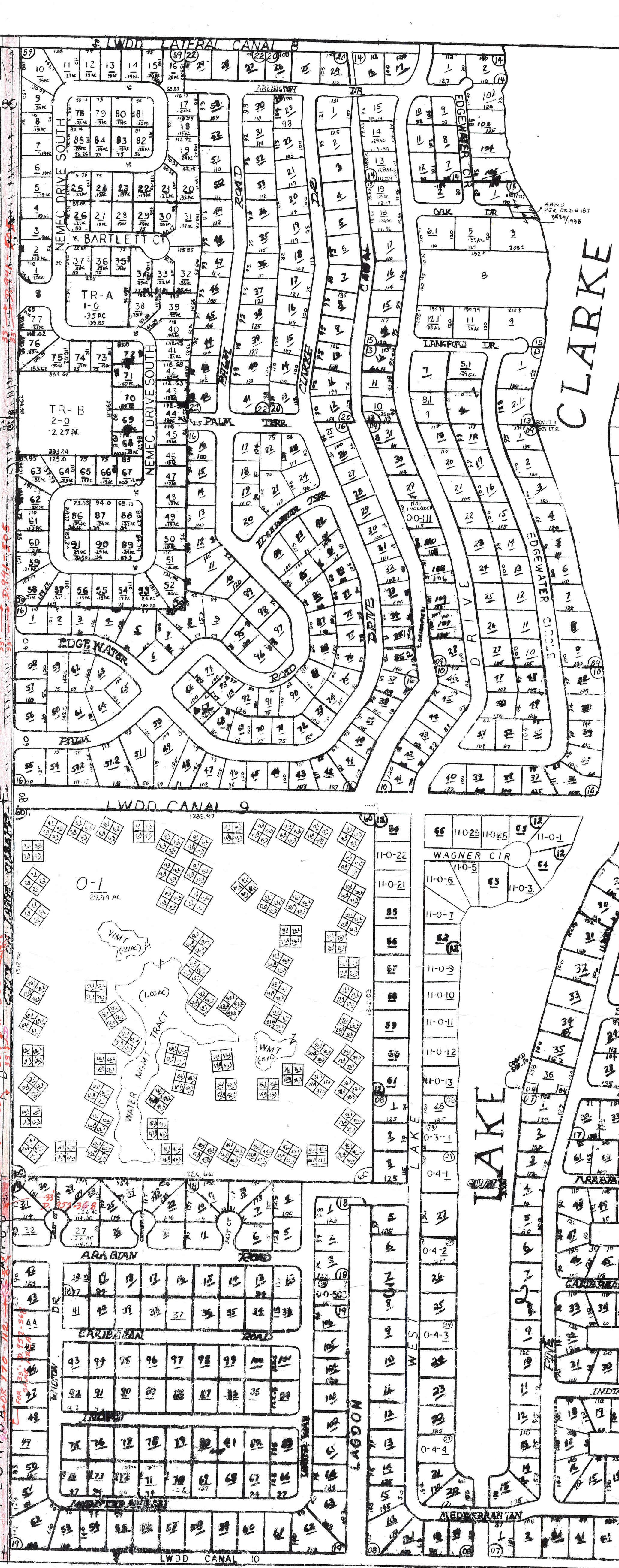
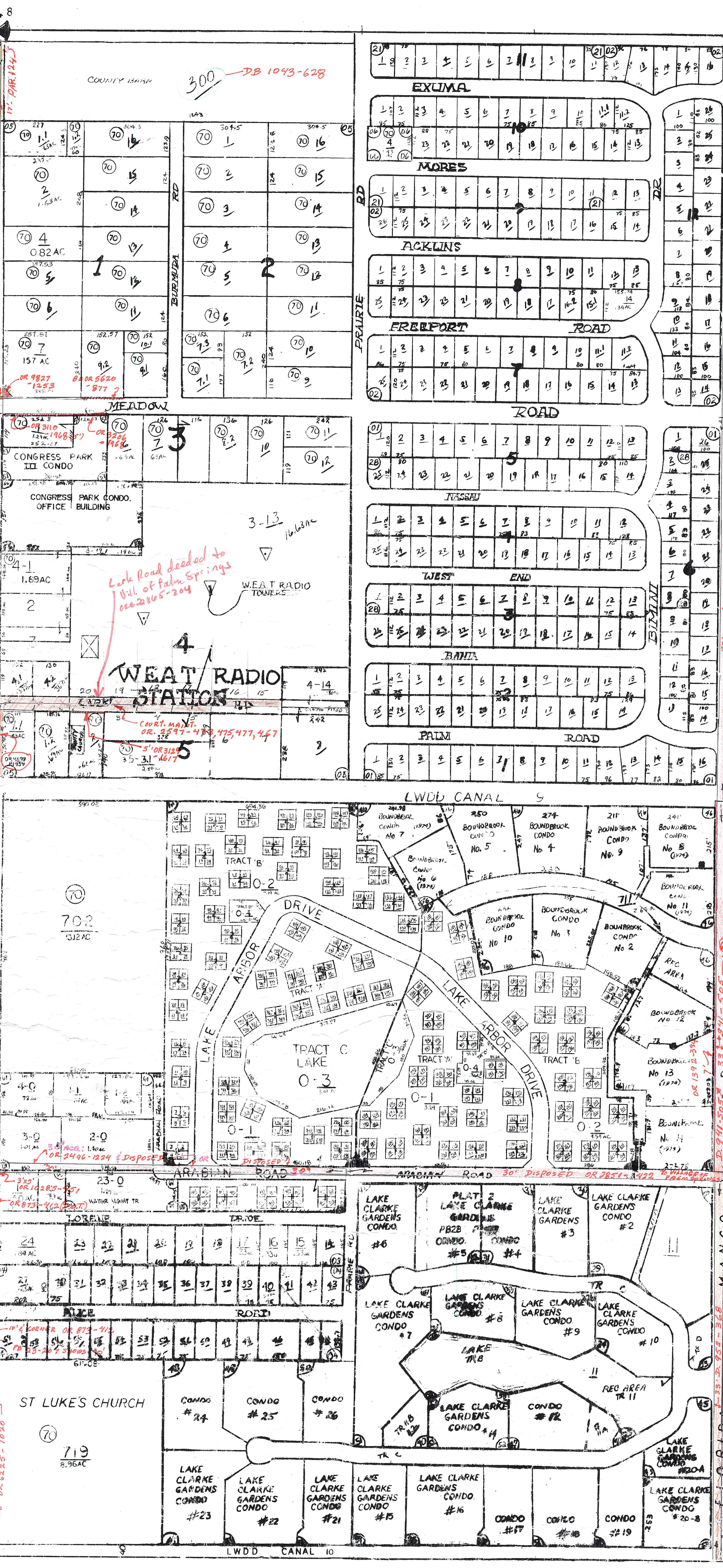


7
8
18
19
20



- 01 BAHAMA HIGHTS PB26P51
- 02 BAHAMA HIGHTS PL 2 PB26P206
- 03 BANDLOW SUB PB21P92
- 04 BANDLOW SUB 1ST ADD PB23P207
- 05 BERMUDA PARK ADD 1 PB21P50
- 06 BERMUDA PARK ADD 2 PB23P134
- 07 LAKE CLARKE WATERWAY ESTS PL 1 FB25P200
- 08 LAKE CLARKE WATERWAY ESTS PL 2 PB26P141
- 09 LAKE CLARKE WEST PB24P243
- 10 LAKE CLARKE WEST PL 2 PB25P107
- 11 LAKE CLARKE WEST PL 3 UNREC AM 44
- 12 LAKE CLARKE WEST PL 3 PB26P105
- 13 LAKE RIDGE PARK ADD PB25P3
- 14 LAKE CLARKE ESTS PB24P141
- 15 LAKE RIDGE PARK PB24P108
- 16 EDGEWATER PARK PB25P236
- 17 SOUTH LAKE CLARKE PB25P173
- 18 PALM RIDGE ESTS NO.1 PB27P120
- 19 PALM RIDGE ESTS NO.2 PB28P1
- 20 LAKE CLARKE NO.1 PB27P249
- 21 BAHAMA HIGHTS PL 3 PB25P55
- 22 LAKE CLARKE PL 2 PB25P101
- 23 LAKE CLARKE GARDENS PB25P110
- 24 LAKE CLARKE GARDENS COND #10
- 25 LAKE CLARKE GARDENS NO.2 PB25P157
- 26 LAKE CLARKE GARDENS COND #9
- 27 BAHAMA HIGHTS NO.4 PB25P45
- 28 BAHAMA HIGHTS NO.5 PB25P156
- 29 LAKE CLARKE GARDENS COND #2
- 30 LAKE CLARKE COND #3
- 31 LAKE CLARKE GARDENS COND #4
- 32 LAKE CLARKE GARDENS COND #5
- 33 LAKE CLARKE GARDENS COND #6
- 34 LAKE CLARKE GARDENS NO.6 PB25P266
- 35 LAKE CLARKE GARDENS COND #16
- 36 LAKE CLARKE GARDENS COND #17
- 37 LAKE CLARKE GARDENS COND #18
- 38 LAKE CLARKE GARDENS COND #19
- 39 LAKE CLARKE GARDENS COND #13
- 40 LAKE CLARKE GARDENS NO.4 PB25P1
- 41 LAKE CLARKE GARDENS COND #2
- 42 LAKE CLARKE GARDENS COND #21
- 43 LAKE CLARKE GARDENS COND #22
- 44 LAKE CLARKE GARDENS COND #23
- 45 LAKE CLARKE GARDENS COND #20A
- 46 BOUND BROOK CONDO
- 47 LAKE CLARKE GARDENS COND #12
- 48 LAKE CLARKE GARDENS COND #24
- 49 LAKE CLARKE GARDENS COND #25
- 50 LAKE CLARKE GARDENS COND #26
- 51 LAKE CLARKE GARDENS COND #7
- 52 LAKE CLARKE GARDENS COND #14
- 53 LAKE CLARKE GARDENS COND #20B
- 54 LAKEWOOD OF PALM SPRINGS (1577) PB22P110
- 55 LAKEWOOD OF PALM SPRINGS 1ST ADD (1575) "B33P25"
- NW 56 CONGRESS PARK CONDO OFFICE BLDG (1579)
- NW 57 CONGRESS PARK 2 CONDO
- 58 CONGRESS PARK 4 OFFICE BLDG (1577) "B33P25"
- NE 59 ESTS OF LAKE CLARKE SHORES PB25P180

17-44-43
To
22-44-43

Palm Beach County (County) makes no representation or warrants whatsoever on the attached / enclosed information reflected herein pertaining to easements, rights-of-way, setback lines, reservations, agreements, and other similar matters. The information provided herein should not be relied upon by the requesting party to confirm the existence / non-existence of facts contained herein.

PARCEL RESTRICTED PER: UNITY OF TITLE

1	2	3	4	5	6	7	8	9	10
11	12	13	14	15	16	17	18	19	20
21	22	23	24	25	26	27	28	29	30
31	32	33	34	35	36	37	38	39	40
41	42	43	44	45	46	47	48	49	50

43	44	17	NO. 10.0
SCALE 1" = 100'			