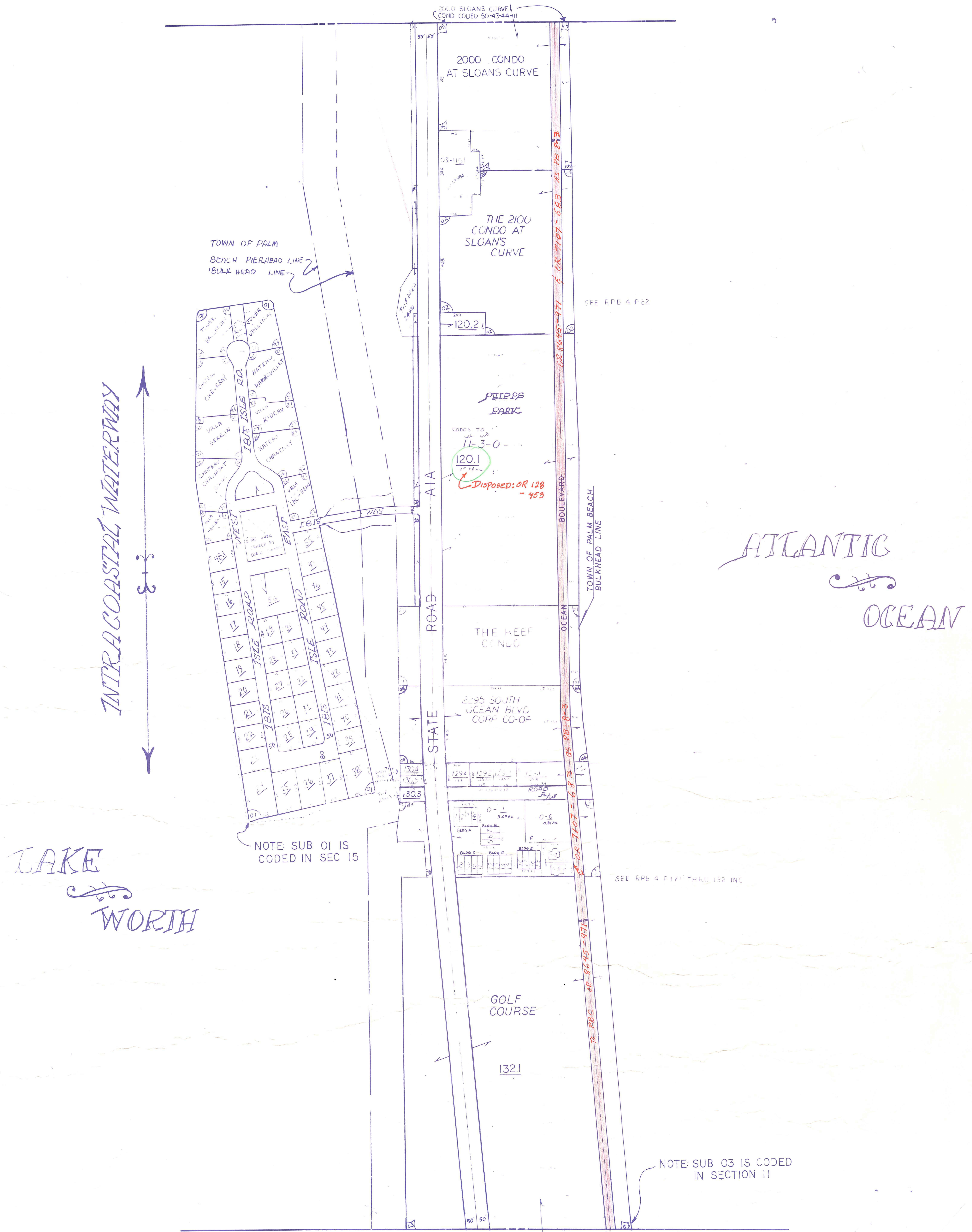
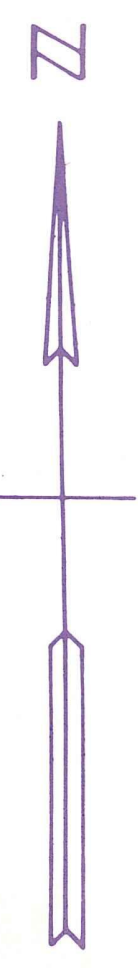


Palm Beach County (County) makes no representation or warranties whatsoever on the attached / enclosed information reflected herein pertaining to easements, rights-of-way, setback lines, reservations, agreements, and other similar matters. The information provided herein should not be relied upon by the requesting party to confirm the existence / non-existence of facts contained herein.



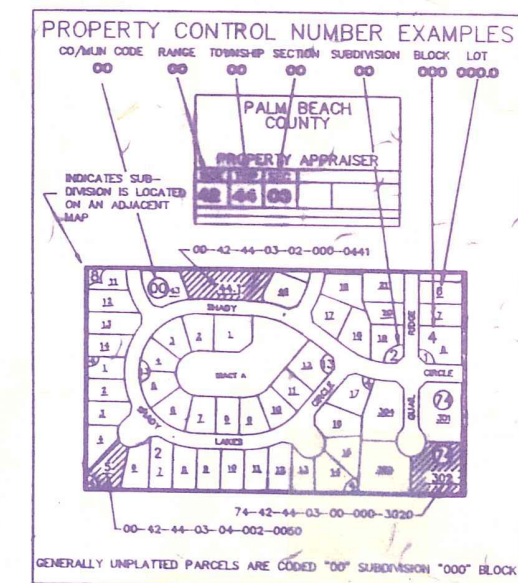
- N 01 THE REEF CONDO (1975)
- N 02 THE 2100 CONDO AT SLOANS CURVE (1961)
- C3 TRES VIDAS OF RE.
- S 04 2245 SOUTH OCEAN BLVD CORP (HARBOR HULL) CO-OP

NOTE: ALL OF SECTION 14 IS IN PALM BEACH - 50

NOTE: SUB 01 IS CODED IN SEC 15

NOTE: SUB 03 IS CODED IN SECTION 11

NOTE:
NOT TO BE REPRODUCED IN ANY FORM EXCEPT BY EXPRESS WRITTEN CONSENT FROM THE PALM BEACH COUNTY ASSESSOR.
Information shown hereon is compiled from the best available sources and CANNOT be used for surveys or land transfers of any type.



PALM BEACH COUNTY
GARY R. NIKOLITS
PROPERTY APPRAISER

36	31	22	33	34	35	36	31	RGE	TWP	SEC	AERIAL
1	6	5	4	3	2	1	6	43	44	14	NO 11/200
12	7	8	9	10	11	12	7	SCALE	1"=200'		
13	18	17	16	15	14	13	18	DRAWN BY	John Bink		
24	19	20	21	22	23	24	19	UPDATED			
25	30	29	28	27	26	25	30				
36	31	32	33	34	35	36	31				
1	6	5	4	3	2	1	6				