

SEE SEC. 9 FOR PARCELS

Palm Beach County (County) makes no representation or warranties whatsoever on the attached / enclosed information reflected herein pertaining to easements, rights-of-way, setback lines, reservations, agreements, and other similar matters. The information provided herein should not be relied upon by the requesting party to confirm the existence / non-existence of facts contained herein.

- S1/2 01 AMENDED PLAT, FRESHWATER ADD. TO WEST PALM BEACH PB6-PG 29
 - S1/2 02 AMENDED PLAT OF FRESHWATER ADD. TO 11TH & 12TH AVE. W.P.B. PB8-PG 22
 - S1/2 03 13TH AVE. ADD. TO FRESHWATER PB9-PG 56
 - S.W. 04 LAKE AVE. ADD. TO W.P.B. PB10-PG 32
 - S.W. 05 ROOSEVELT ESTATES REPL. PB26-PG77-78
 - N.W. 06 JOHNSONS SUB PB18-PG50
 - N.W. 07 LINCOLN PARK PB9-PG45
 - N.W. 08 TAMARIND PARK PB18-PG14
 - N.W. 09 TAMARIND PARK PLAT 2 PB18-PG69
 - N.E. 10 WASHINGTON HGTS PB8-PG5
 - N.W. 11 GRAY ADD TO GRANT PARK PB11-PG44
 - N.W. 12 GRANT PARK ADD. TO W.P.B. PB9-PG14
 - S.E. 13 ROSEMARY ADD. TO W.P.B. PB6-PG72
 - N.E. 14 AMENED PL. OF S. MANGONIA PB6-PG16
 - N.E. 15 PLEASANT CITY PB1-PG1-2
 - N.E. 16 UP-TO-DATE ADDITION TO PLEASANT CITY PB3-PG3
 - E1/2 17 PALM BEACH NORTH PB1-PG127
 - N.E. 18 PALM BCH. N. RESUB. OF BLKS 7,8 PB8-PG77
 - S.E. 19 FRANKLIN PARK ADD TO W.P.B. PB7-PG47
 - N.E. 20 CURRIE ADD. TO P.B. NORTH PB3-PG3
 - S.W. 21 ROOSEVELT ESTATES REPLAT OF PART OF BLK. 35 PB29-PG59
- FRESHWATER LAKES (90) PB70P48**
NE 23 DUNBAR VILLAGE (99) PB18P77

NOTES

- AUSTRALIAN AVE: FROM SOUTH CITY LIMITS TO 4514th

- PALM BEACH LAKES BLVD FROM DEERHOBSE TO DIXIE HWY

SEE RES 85-1077 FOR AGREEMENT BVA, P.B.C & CITY OF W.P.B.; TRANSFERING TO COUNTY ENGINEERING SERVICES AND RESPONSIBILITIES WITHIN THE MUNICIPAL BOUNDARIES OF CITY OF W.P.B.

E-15: LOT 1 - DB 378-417
 LOT 2 - DB 340-28
 LOT 3 - DB 155-378

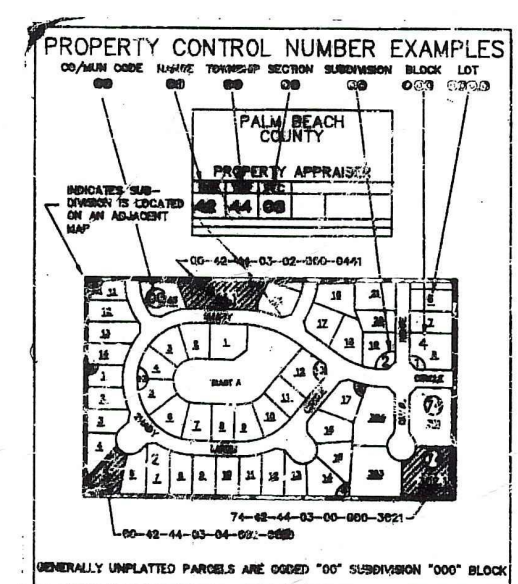
ALL OF W.P.B. IS (74)

E-15: 245' 4" DB 288-7007

NOTE: BRELSFORD PARK CODED 20 IN SEC 15

NOTE: NOT TO BE REPRODUCED IN ANY FORM EXCEPT BY EXPRESS WRITTEN CONSENT FROM THE PALM BEACH COUNTY PROPERTY APPRAISER

Information shown herein is compiled from the best available sources and CANNOT be used for surveys or land transactions of any type.



PALM BEACH COUNTY
GARY R. NIKOLITS
PROPERTY APPRAISER

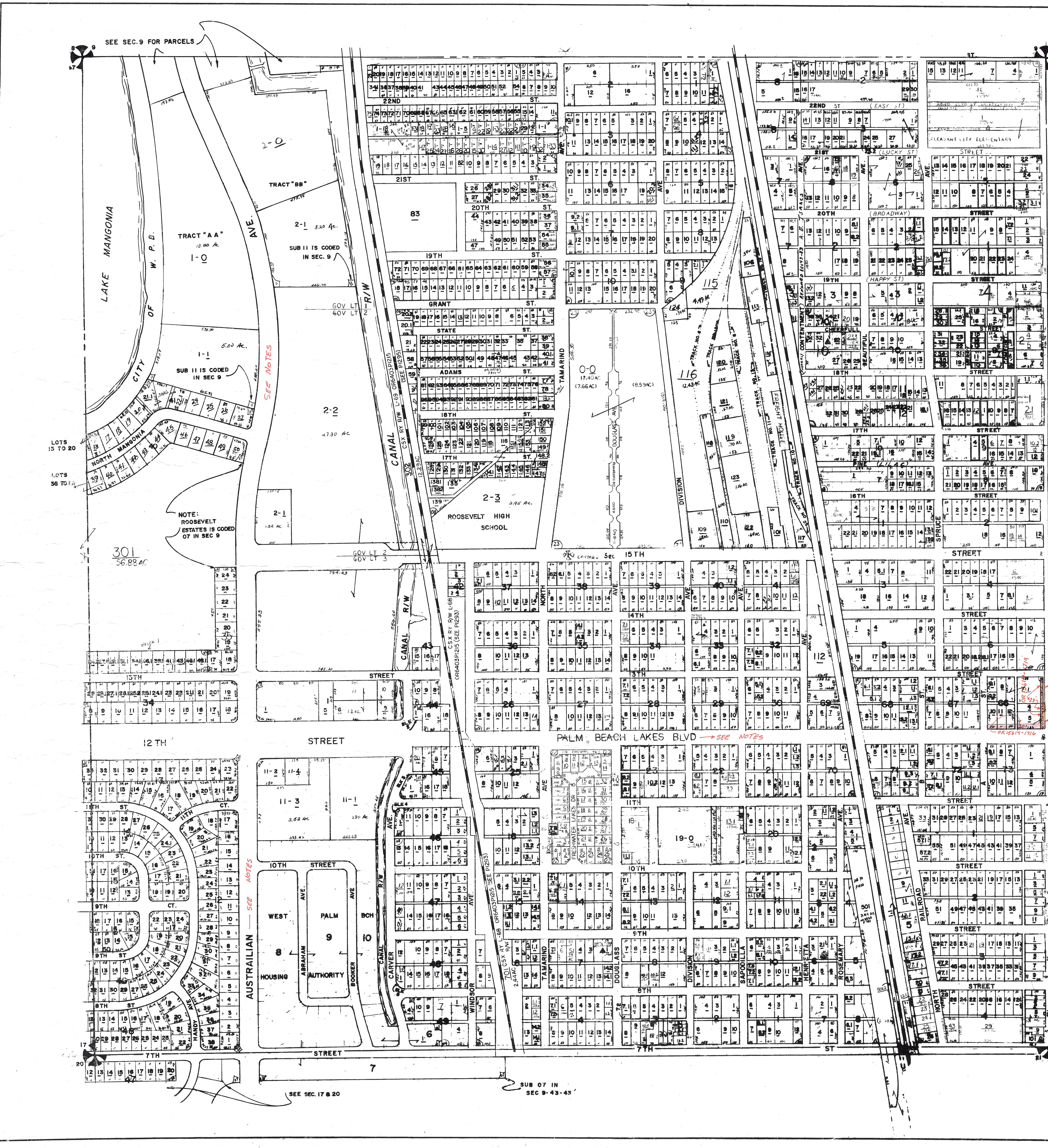
30	31	32	33	34	35	36	37
1	2	3	4	5	6	7	8
9	10	11	12	13	14	15	16
17	18	19	20	21	22	23	24
25	26	27	28	29	30	31	32
33	34	35	36	37	38	39	40
41	42	43	44	45	46	47	48
49	50	51	52	53	54	55	56
57	58	59	60	61	62	63	64
65	66	67	68	69	70	71	72
73	74	75	76	77	78	79	80
81	82	83	84	85	86	87	88
89	90	91	92	93	94	95	96
97	98	99	100				

RGE 43 TWP 43 SEC 16 AERIAL NO 00-00

SCALE 1" = 200'

DRAWN BY ED KESHIAN 9-6-78

UPDATED



SEE NOTES

NOTE: ROOSEVELT ESTATES IS CODED 07 IN SEC 9

SEE NOTES

SEE SEC. 17 & 20

SUB 07 IN SEC 9-43-43

9/27/02 mnc