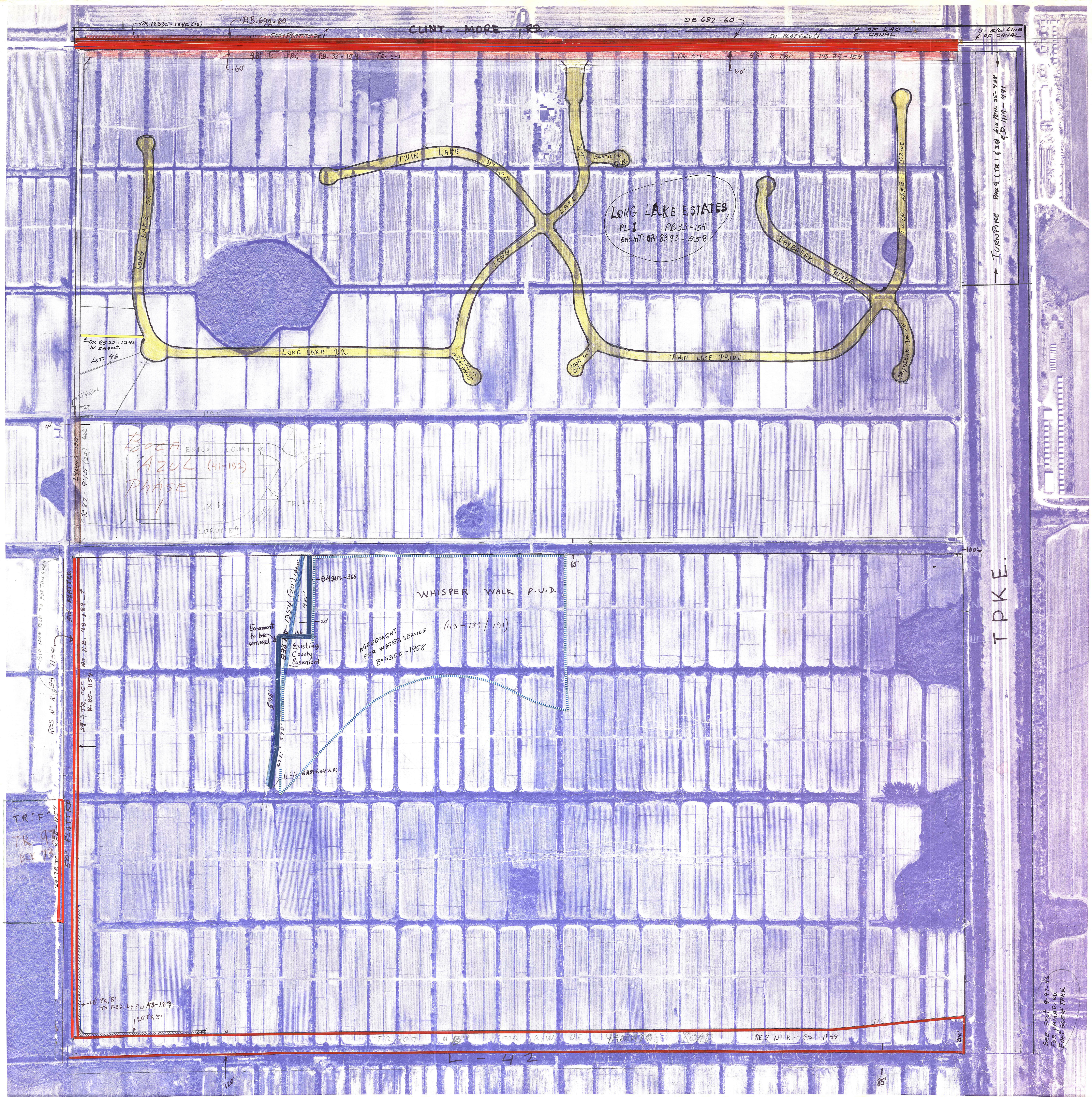


**Palm Beach County (County) makes no representation or warranties whatsoever on the attached / enclosed information reflected herein pertaining to easements, rights-of-way, setback lines, reservations, agreements, and other similar matters. The information provided herein should not be relied upon by the requesting party to confirm the existence / non-existence of facts contained herein.**



WHISPER WALK P.U.D. (43-189/191)  
 TRACTS 41 TO 120 INCLUSIVE  
 BEING N.E. 1/4 BLOCK 70  
 WITHIN LINDS 8-11 & 42.  
 PLUS TR 47-BLOCK 72

SEE SHEET 9-47-78  
 FOR YAMATO RD.  
 EASEL SIDE OF TPKE.

NOTE:  
 NOT TO BE REPRODUCED IN ANY FORM EXCEPT BY EXPRESS WRITTEN CONSENT FROM THE PALM BEACH COUNTY TAX ASSESSOR.  
 Information shown hereon is compiled from the best available sources and CANNOT be used for surveys or land transfers of any type.

PALM BEACH COUNTY		
SEC. 5	S.49	
BLOCK	TWP.	RGE.
72	47	42



Aerial Photo Date — FEB. 14, 1968

MOCK ROOSE SEARCY Consulting Engineers