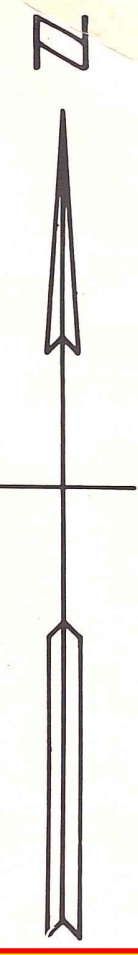
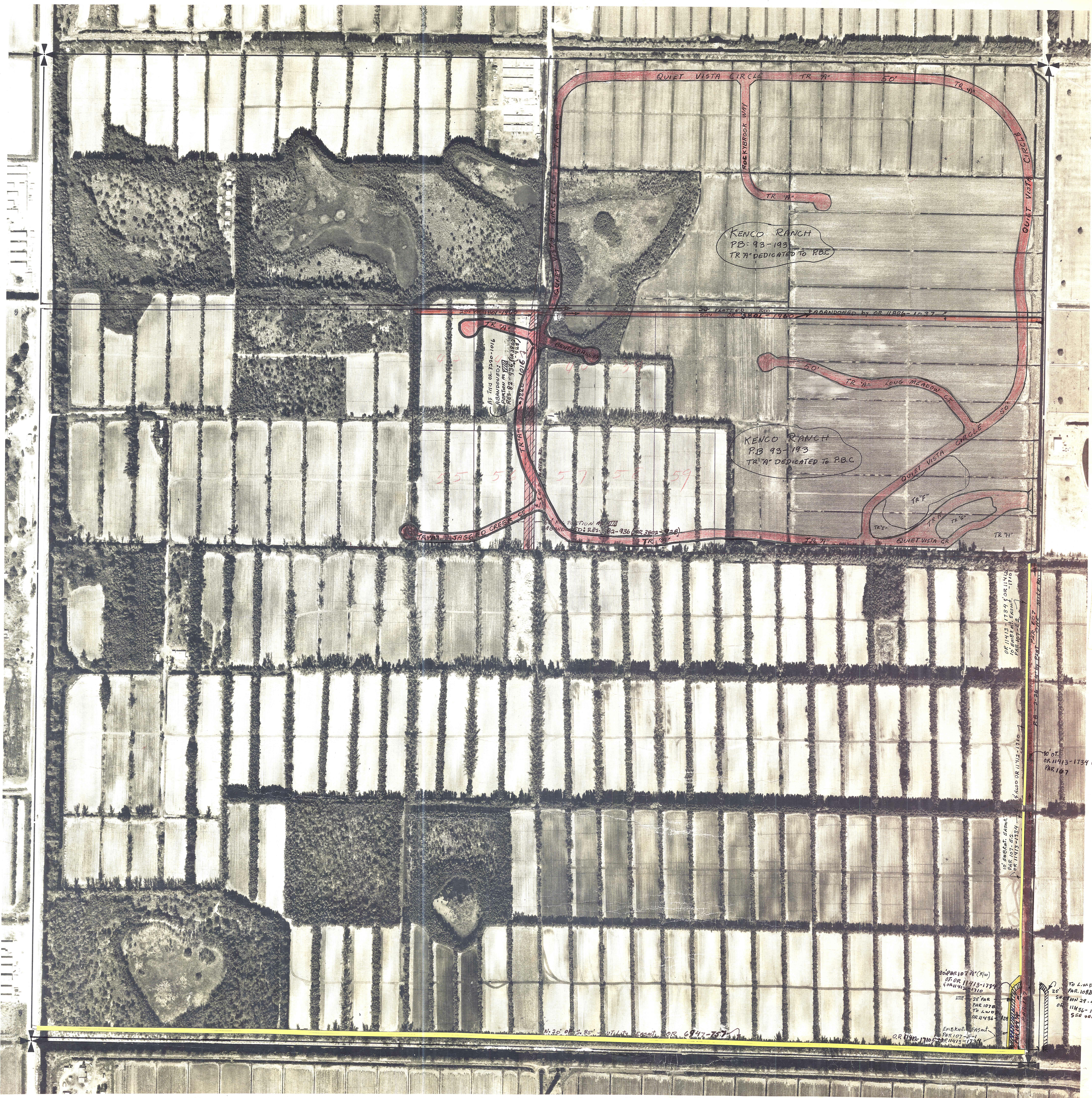


LOCATION OF TRACTS 41 & 42
 DERIVED FROM TAX MAP 42-46-30



Palm Beach County (County) makes no representation or warranties whatsoever on the attached / enclosed information reflected herein pertaining to easements, rights-of-way, setback lines, reservations, agreements, and other similar matters. The information provided herein should not be relied upon by the requesting party to confirm the existence / non-existence of facts contained herein.



KENCO RANCH
 PB 93-193
 TR 'A' DEDICATED TO P.B.C.

KENCO RANCH
 PB 93-193
 TR 'A' DEDICATED TO P.B.C.

AS THIS OR 2240-1916
 ABANDONED BY
 PAR 107
 OR 2240-1916
 PAR 107

SECTION 14, T11N, R12E, S14
 REF: 82-936 (OR 3822-226)
 TR 'A'

OR 11413-1734
 OR 11412-1710
 PAR 107

10 OT.
 OR 11413-1734 & OR 11412-1710
 PAR 107

36 PAR 107 (R/W)
 OR 11413-1734
 PAR 107
 128 25 PAR
 PAR 107
 OR 11413-1734
 PAR 107

TO L.W.D.P.
 PAR 108B
 SECTION 29-46-42
 OR 11456-129
 566 2667.29

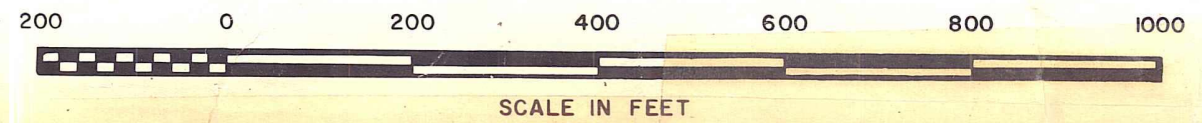
N. 26° OF S. 25' - WIDTH EASEM. OR 6947-757

OR 11413-1734
 PAR 107

NOTE:
 NOT TO BE REPRODUCED IN
 ANY FORM EXCEPT BY EXPRESS
 WRITTEN CONSENT FROM THE
 PALM BEACH COUNTY TAX
 ASSESSOR.

Information shown hereon is
 compiled from the best available
 sources and CANNOT be used
 for surveys or land transfers of
 any type.

MOCK ROOSE SEARCY
 Consulting Engineers
 PHOTOGRAMMETRIC ENGINEERING BY



Aerial Photo Date - FEB. 14, 1968

| | | |
|-------------------|------|------|
| PALM BEACH COUNTY | | |
| 546 | | |
| BLOCK | TWP. | RGE. |
| 30 | 46 | 42 |