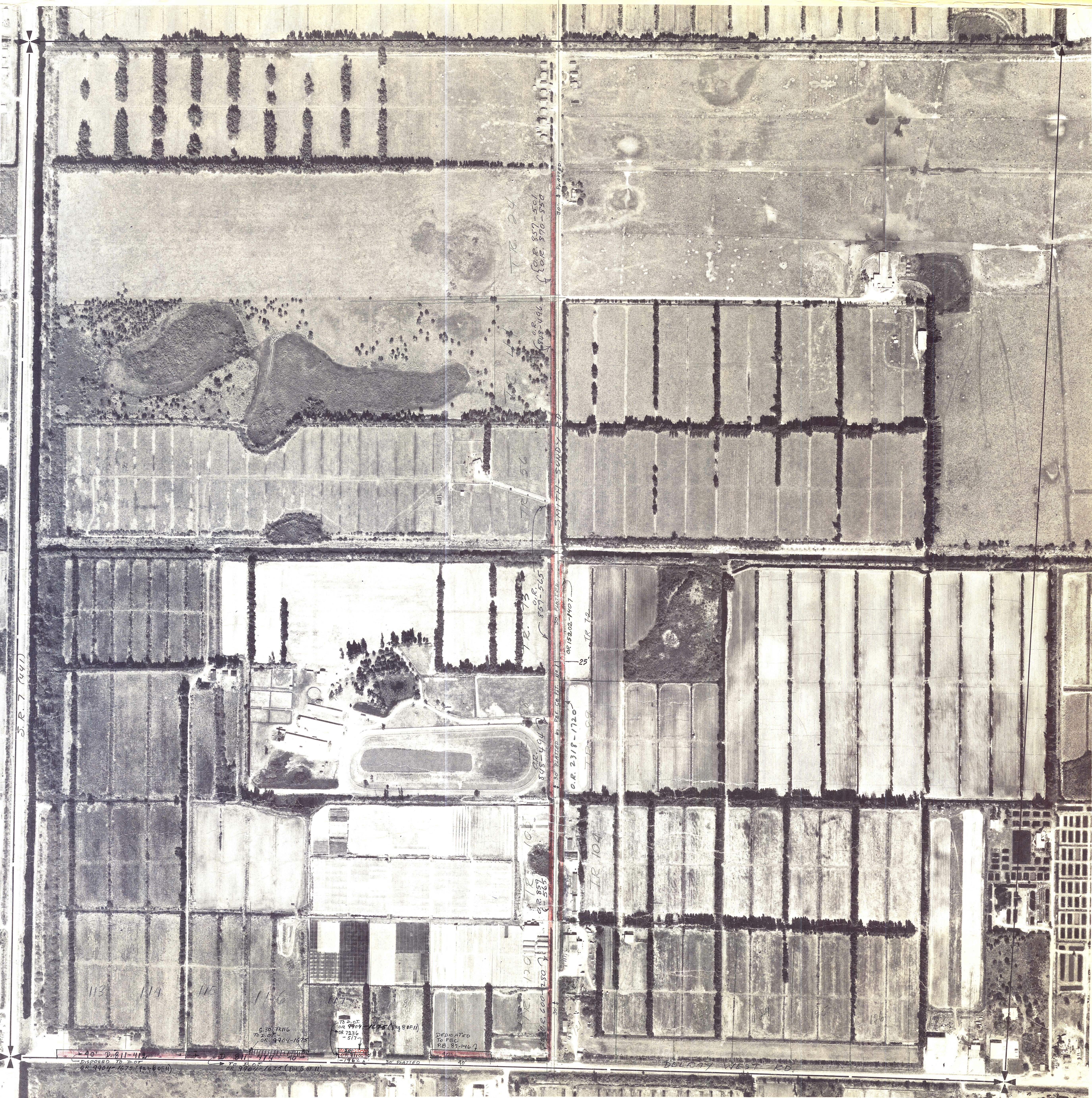




Palm Beach County (County) makes no representation or warranties whatsoever on the attached / enclosed information reflected herein pertaining to easements, rights-of-way, setback lines, reservations, agreements, and other similar matters. The information provided herein should not be relied upon by the requesting party to confirm the existence / non-existence of facts contained herein.



NOTE:
NOT TO BE REPRODUCED IN ANY FORM EXCEPT BY EXPRESS WRITTEN CONSENT FROM THE PALM BEACH COUNTY TAX ASSESSOR.
Information shown hereon is compiled from the best available sources and CANNOT be used for surveys or land transfers of any type.

PALM BEACH COUNTY

SEC. 12	S. 43	
BLOCK	TWP.	RGE.
	46	42
1" = 200' No. 182 B		

Aerial Photo Date — FEB. 14, 1968

PHOTOGRAMMETRIC ENGINEERING BY
MOCK ROOSE & SEARCY
Consulting Engineers

