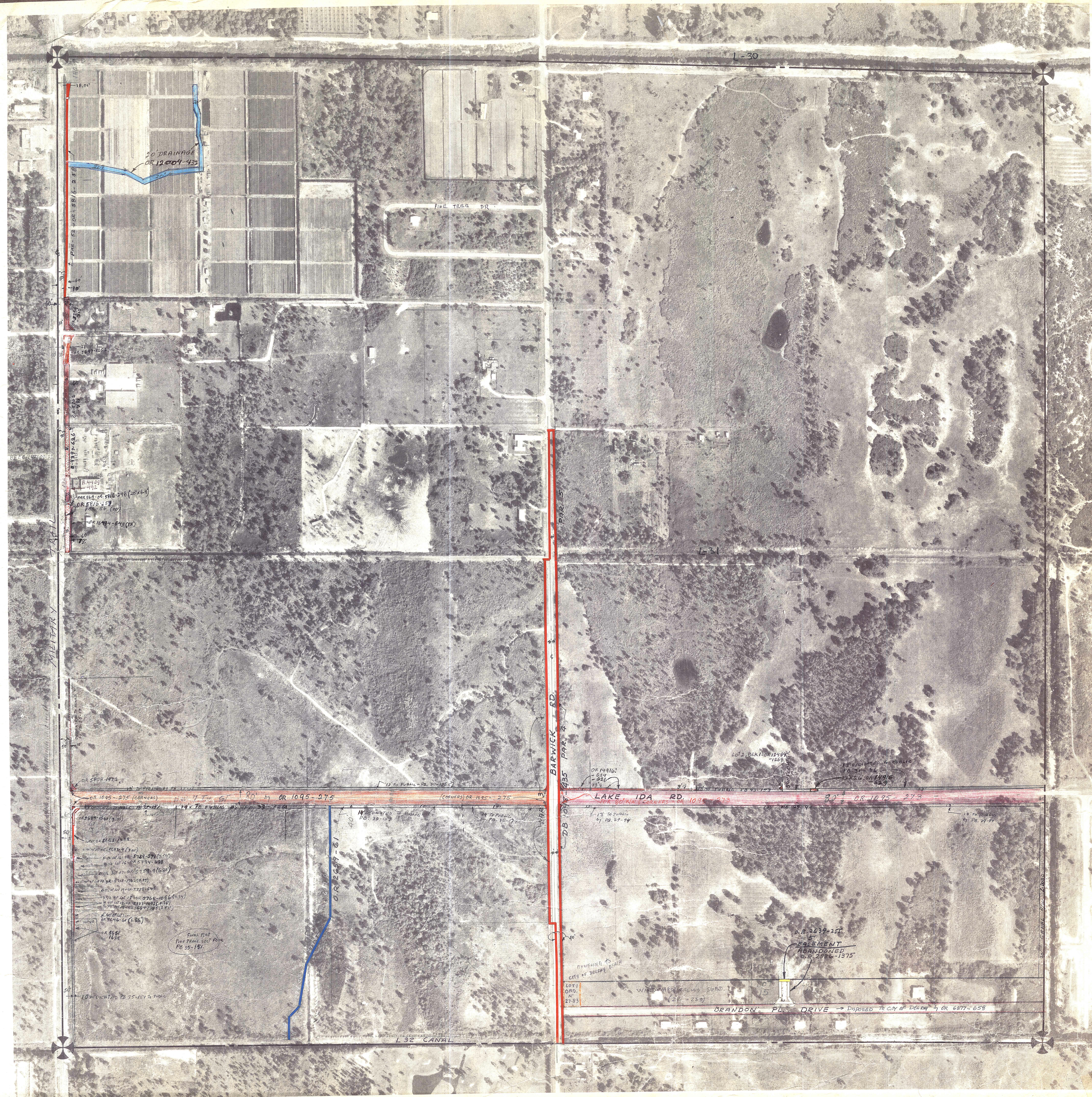


Palm Beach County (County) makes no representation or warranties whatsoever on the attached / enclosed information reflected herein pertaining to easements, rights-of-way, setback lines, reservations, agreements, and other similar matters. The information provided herein should not be relied upon by the requesting party to confirm the existence / non-existence of facts contained herein.



NOTE:
 NOT TO BE REPRODUCED IN ANY FORM EXCEPT BY EXPRESS WRITTEN CONSENT FROM THE PALM BEACH COUNTY ASSESSOR.
 Information shown hereon is compiled from the best available sources and CANNOT be used for surveys or land transactions of any type.

PALM BEACH COUNTY
 544
 DAVID L. REID
 County Assessor

RGE	TWP	SEC	AERIAL
42	46	12	No. 639
SCALE			1"=200'

Aerial Photo Date — 10-23-70

BROCKWAY OWEN & ANDERSON ENGINEERS, INC.
 ENGINEERS PLANNERS SURVEYORS
 WEST PALM BEACH, FLORIDA

