

HIATUS TRACT 39

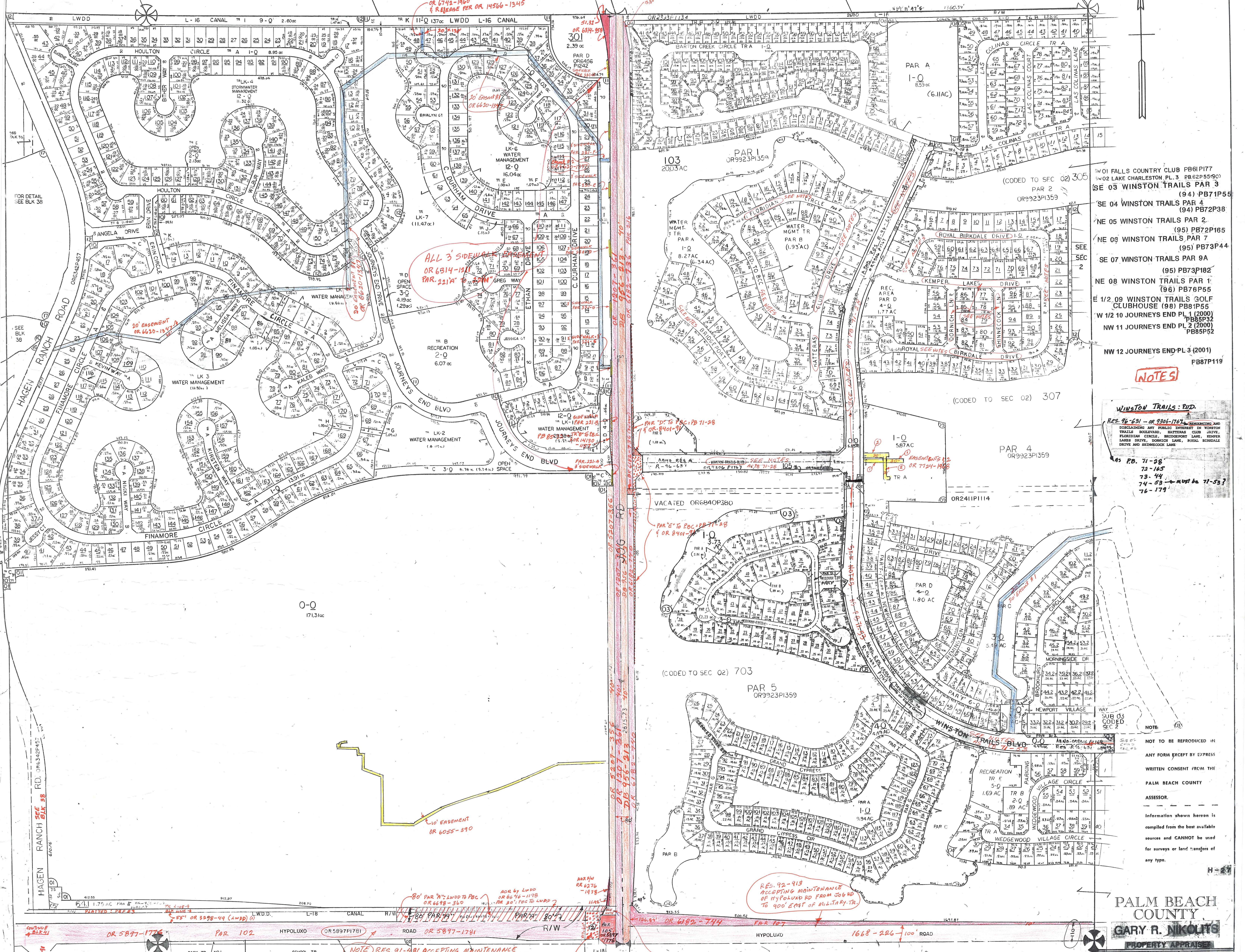
LOT 1

LOT 4

LOT 3

LOT 2

LOT



- 3W01 FALLS COUNTRY CLUB PB6PI77
- 3W02 LAKE CHARLESTON PL. 3 PB62P5590
- SE 03 WINSTON TRAILS PAR 3 (94) PB71P55
- SE 04 WINSTON TRAILS PAR 4 (94) PB72P38
- NE 05 WINSTON TRAILS PAR 2 (95) PB72P165
- NE 05 WINSTON TRAILS PAR 7 (95) PB73P44
- SE 07 WINSTON TRAILS PAR 9A (95) PB73P182
- NE 08 WINSTON TRAILS PAR 1 (96) PB76P55
- E 1/2 09 WINSTON TRAILS GOLF CLUBHOUSE (98) PB81P55
- W 1/2 10 JOURNEYS END PL 1 (2000) PB85P32
- NW 11 JOURNEYS END PL 2 (2000) PB85P52
- NW 12 JOURNEYS END-PL 3 (2001) PB87P119

NOTES

WINSTON TRAILS: PUD
 RES. 96-631 - OR 9306-1767 - RENOVATING AND DISCONTINUING ANY PUBLIC INTEREST IN WINSTON TRAILS BOULEVARD, BATTERS CLUB DRIVE, PEACOCK CIRCLE, BENDGROVE LANE, KROGER LAKES DRIVE, DORRICH LANE, ROYAL BIRKDALE DRIVE AND BENDGROVE LANE.
 RES. 71-28
 72-165
 73-44
 74-53 - must be 71-53?
 76-174

NOTE:
 NOT TO BE REPRODUCED IN ANY FORM EXCEPT BY EXPRESS WRITTEN CONSENT FROM THE PALM BEACH COUNTY ASSESSOR.
 Information shown hereon is compiled from the best available sources and CANNOT be used for surveys or land transfers of any type.

PALM BEACH COUNTY
 GARY R. NIKOLTS
 PROPERTY APPRAISER

RGE	TWP	SEC	AERIAL
42	45	3	NO 63-16W
SCALE 1" = 200'		BLK 39	
DRAWN BY		L.S. 4-15-01	
UPDATED			

Palm Beach County (County) makes no representation or warranties whatsoever on the attached / enclosed information reflected herein pertaining to easements, rights-of-way, setback lines, reservations, agreements, and other similar matters. The information provided herein should not be relied upon by the requesting party to confirm the existence / non-existence of facts contained herein.

Don't find anything
 12-14-98

NOTE RES. 91-481 ACCEPTING MAINTENANCE OF HYPOLUXO FROM TURNPIKE TO 306 RD.

RES. 92-913 ACCEPTING MAINTENANCE OF HYPOLUXO RD FROM 306 RD TO 900' EAST OF MILITARY TR.

80' PAR 102 LWD TO PBC OR 6698-360 OR 301-100 TO LWD

ADR BY LWD OR 6676-1178 OR 6676-1178

OR 5897-1776 PAR 102 HYPOLUXO ROAD OR 5897-1781

FOR DETAIL SEE BLK 38

HAGEN RANCH SEE BLK 38

PAR 102 LWD OR 3309-429 TO PBC BY OR 6698-360

NOTE: PAR 102 LWD OR 3309-429 TO PBC BY OR 6698-360