

NOTE: SUBD 4 NOT TO SCALE

SUB 13 COLN TS

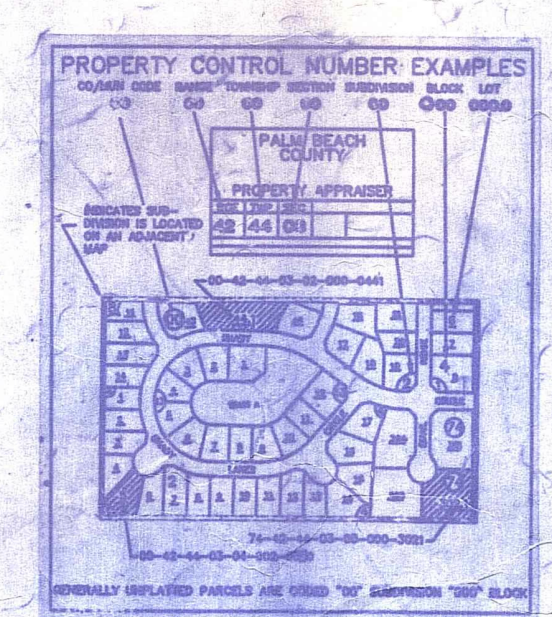
Palm Beach County (County) makes no representation or warranties whatsoever on the attached / enclosed information reflected herein pertaining to easements, rights-of-way, setback lines, reservations, agreements, and other similar matters. The information provided herein should not be relied upon by the requesting party to confirm the existence / non-existence of facts contained herein.

- SW 01 LANTANA HOMES PL 9 (9) PB58P90
- SW 02 LANTANA HOMES PL 7 (89) PB59 P78
- NW 03 LANTANA HOMES PL 6 (89) PB61 P37
- NW 04 LANTANA HOMES PL 5 (89) PB61 P39
- SW 05 LEE ESTATES PL 1 (93) PB69P109
- SW 06 LEE ESTATES PL 2 (93) PB70P123
- SW 07 LEE ESTATES PL 3 (94) PB71P102
- SW 08 LEE ESTATES PL 4 (95) PB72P133
- SW 09 LEE ESTATES PL 5 (95) PB73P59
- SW 10 IGLESIA HISPANA BIBLICA BAUTISTA (99) PB84P44
- NE 11 NAUTICA ISLES PL 1 (2001) PB88P184
- NE 12 NAUTICA ISLES PL 2 (2001) PB88P186
- NE 13 NAUTICA ISLES PL 3 (2001) PB88P193
- NE 14 NAUTICA ISLES PL 4 (2001) PB88P196

NOTE:
PART OF SEC IN COUNTY (C)
PART OF SEC IN GREENACRES (B)

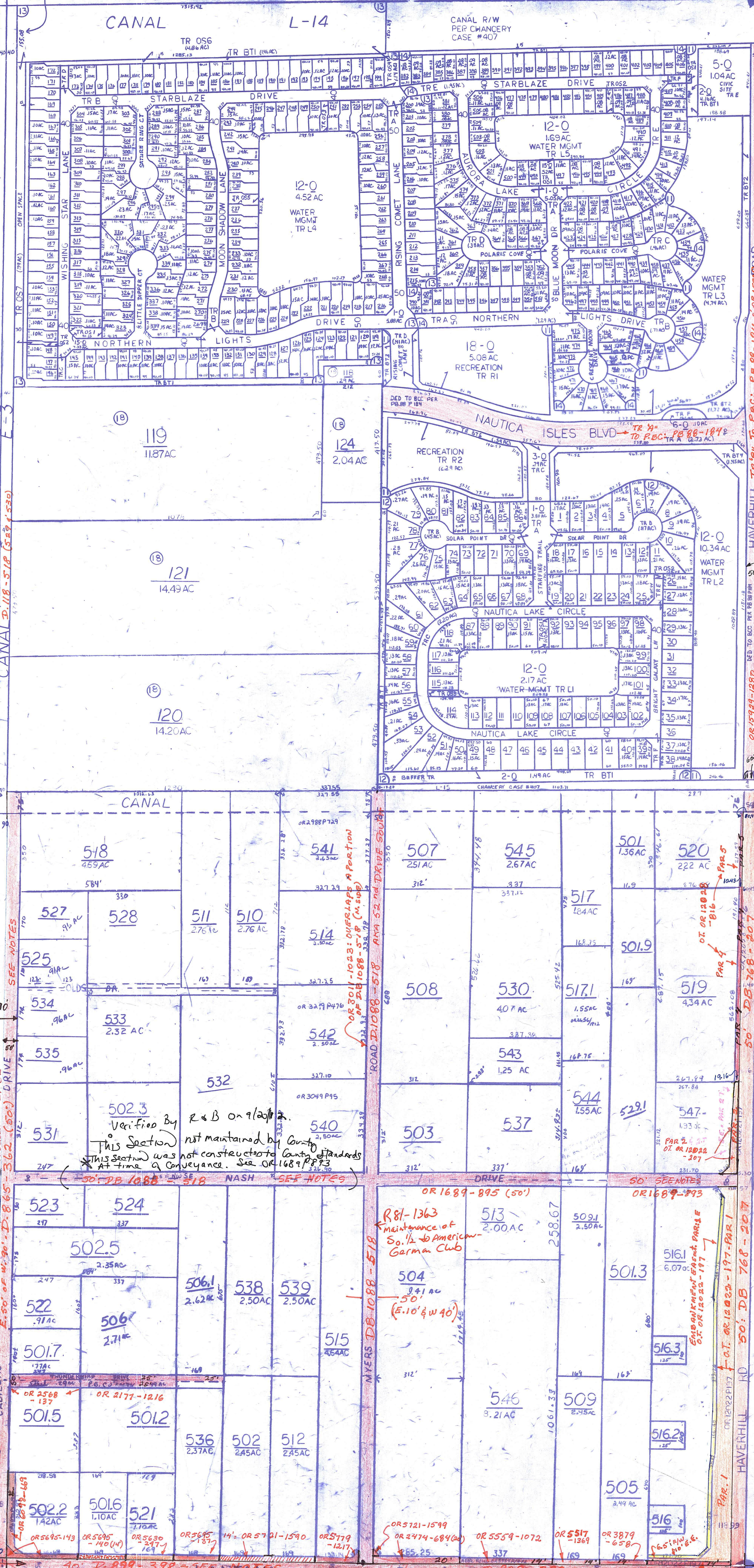
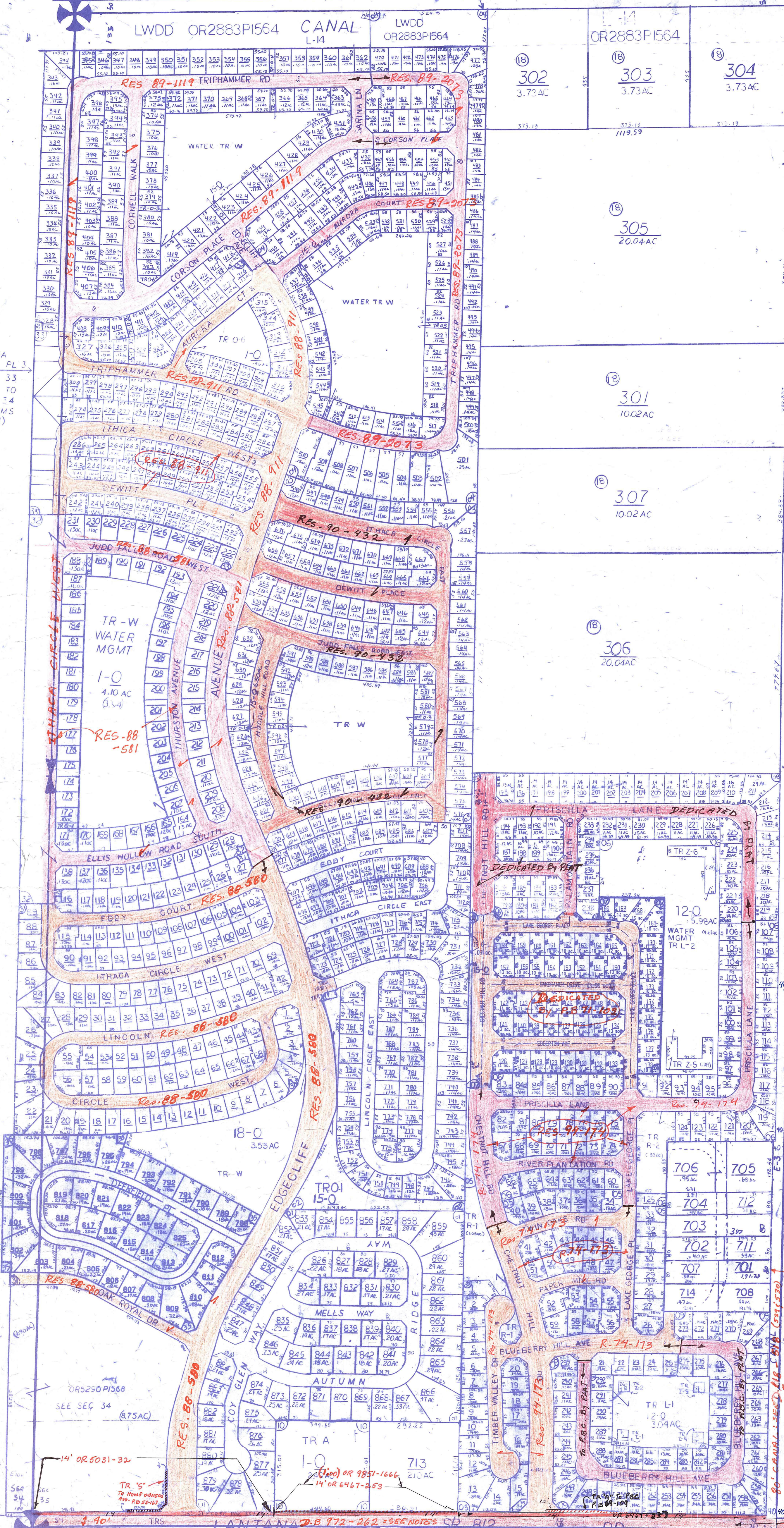
NOTES:
- LANTANA RD; South 40' sect 35 disposed to D.O.T PER D.B. 903-411
- NASH - DESOTO - CADILLAC; ARE COURTESY MAINTAINEL

SW 1/4 NOT TO SCALE



PALM BEACH COUNTY
GARY R. NIKOLITS
PROPERTY APPRAISER

RGE	TWP	SEC	AERIAL
42	44	35	NO 607
SCALE 1"=200'			
DRAWN BY: Ollis 10/19/04			
UPDATED:			



LANTANA HOMES PL 3
SUB 33
CODED TO
SEC 34
(B FARMS
BLK 31)

S AND E LINE OF SEC ONE NOT TO SCALE

SEE HINTUS, TR 38

NOTE:
NOT TO BE REPRODUCED IN ANY FORM EXCEPT BY EXPRESS WRITTEN CONSENT FROM THE PALM BEACH COUNTY PROPERTY APPRAISER. Information shown hereon is compiled from the best available sources and CANNOT be used for surveys or land transfers of any type.