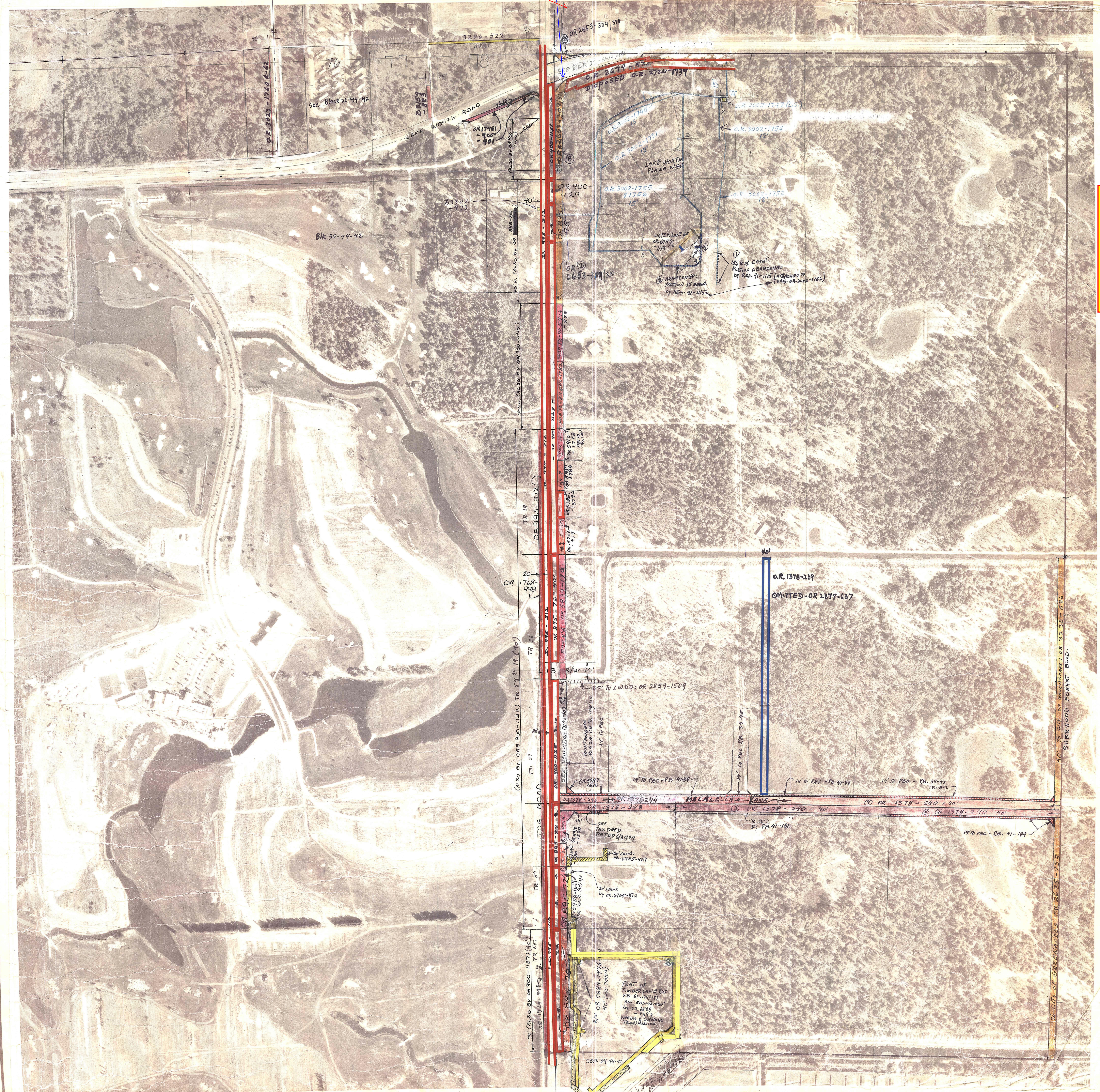


Information Modified 5/20/2016
 Burger King
 Deed for Parcel in Sec 27 - OR 4270-1322
 Deed for Parcel in Sec 22 - OR 3421-1965
 Deed for R/W Parcel 101 for Project 2012500
 OR 23066-1543 (has wrong call)

300 & Lake Worth, turning lines
 eastbound and northbound



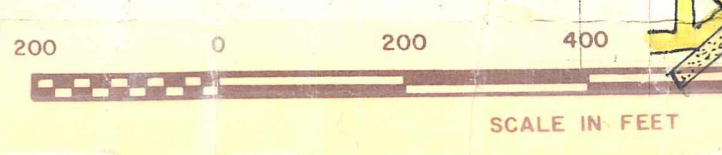
Palm Beach County (County)
 makes no representation or
 warranties whatsoever on the
 attached / enclosed information
 reflected herein pertaining to
 easements, rights-of-way,
 setback lines, reservations,
 agreements, and other similar
 matters. The information
 provided herein should not be
 relied upon by the requesting
 party to confirm the existence /
 non-existence of facts contained
 herein.

NOTE
 NOT TO BE REPRODUCED IN
 ANY FORM EXCEPT BY EXPRESS
 WRITTEN CONSENT FROM THE
 PALM BEACH COUNTY
 ASSESSOR.
 Information shown hereon is
 compiled from the best available
 sources and CANNOT be used
 for surveys or land transfers of
 any type.

PALM BEACH COUNTY
 5-32
 DAVID L. REID
 County Assessor

AGE	TWP	SEC	AERIAL
42	44	27	No

Aerial Photo Date — 10-25-70



BROCKWAY, OWEN & ANDERSON ENGINEERS, INC.
 ENGINEERS PLANNERS ARCHITECTS
 1000 S. PALM BEACH BLVD.
 WEST PALM BEACH, FL 33411



PLAT
DEPT.
REVISION
NO. 23-25
PROVISION

KANAWHA PARK
(23-242)

3199
- 1528
TRACT
27



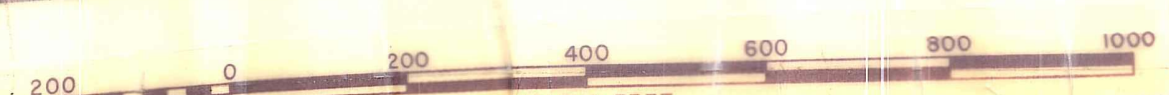
W 1/2 of SEC. 27
P. Bch. FARMS
PLAT 3

NOTE:
NOT TO BE REPRODUCED IN
ANY FORM EXCEPT BY EXPRESS
WRITTEN CONSENT FROM THE
PALM BEACH COUNTY
ASSESSOR.
Information shown hereon is
compiled from the best available
sources and CANNOT be used
for surveys or land transfers of
any type.

PALM BEACH
COUNTY
5.32
DAVID L. REID
COUNTY ASSESSOR

RGE	TWP	SEC	BLK	AERIAL
42	44	27	30	NO 63-70A

SCALE 1"=200'
DRAWN BY



PLAT DATE DEC 1933