

18 17
19 20

17 16
20 21

2776.09

2776.02

ROEBUCK ROAD

120' OR 14018-1185

OR 15752-1047

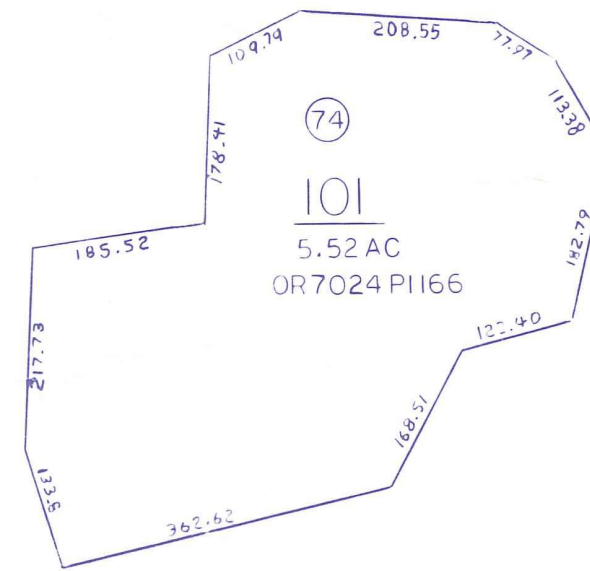
130'

5800±

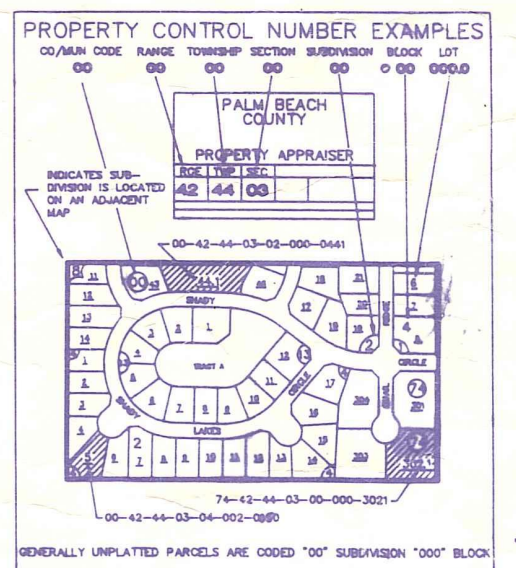
4980±

74

100
585.49 AC
OR 7024 PI166



Palm Beach County (County) makes no representation or warranties whatsoever on the attached / enclosed information reflected herein pertaining to easements, rights-of-way, setback lines, reservations, agreements, and other similar matters. The information provided herein should not be relied upon by the requesting party to confirm the existence / non-existence of facts contained herein.



NOTE:
NOT TO BE REPRODUCED IN ANY FORM EXCEPT BY EXPRESS WRITTEN CONSENT FROM THE PALM BEACH COUNTY PROPERTY APPRAISER.
Information shown hereon is compiled from the best available sources and CANNOT be used for surveys or land transfers of any type.

19 20
30 29

20 21
29 28

OR 5805-278

OR 4932-1589 (100')

100' Displayed to DOT 06.922-255 (FILED 01-25)

OKEECHOBEE BLVD

SR 704

OR 4864-1561 (100')

OR 5805-278 (100')

500
20.31 AC
OR 1045 P515

501
5.00 AC
OR 4713 P874

PALM BEACH COUNTY
N-22
PROPERTY APPRAISER

36	31	32	33	34	35	36	31	RGE	TWP	SEC	AERIAL
11	8	5	4	3	2	1	6	42	43	20	NO/OK
12	7	8	9	10	11	12	7	SCALE	1" = 200'		
13	18	17	16	15	14	13	18	DRAWN BY	PGRICE 7-14		
24	19	20	21	22	23	24	19	UPDATED	07-15-96		
25	30	29	28	27	26	25	30				
36	31	32	33	34	35	36	31				
1	2	3	4	5	6	1	2				