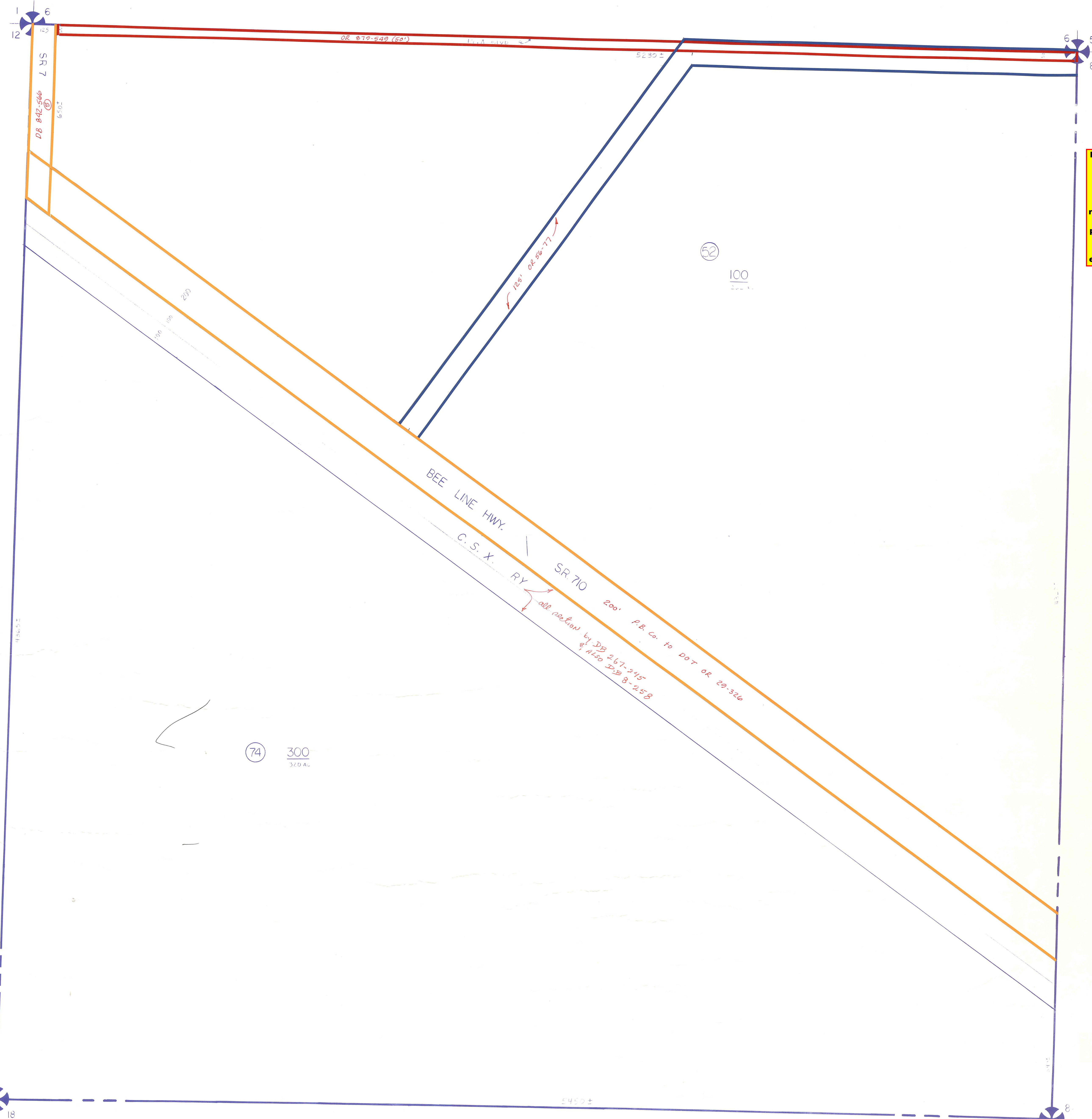


Palm Beach County (County) makes no representation or warrants whatsoever on the attached / enclosed information reflected herein pertaining to easements, rights-of-way, setback lines, reservations, agreements, and other similar matters. The information provided herein should not be relied upon by the requesting party to confirm the existence / non-existence of facts contained herein.



K-10

PALM BEACH COUNTY			
<i>N-61</i>			
PROPERTY APPRAISER			
RGE	TWP	SEC	AERIAL
42	42	7	NO
SCALE		1" = 200'	
DRAWN BY		C. BROWN 11-80	
UPDATED			