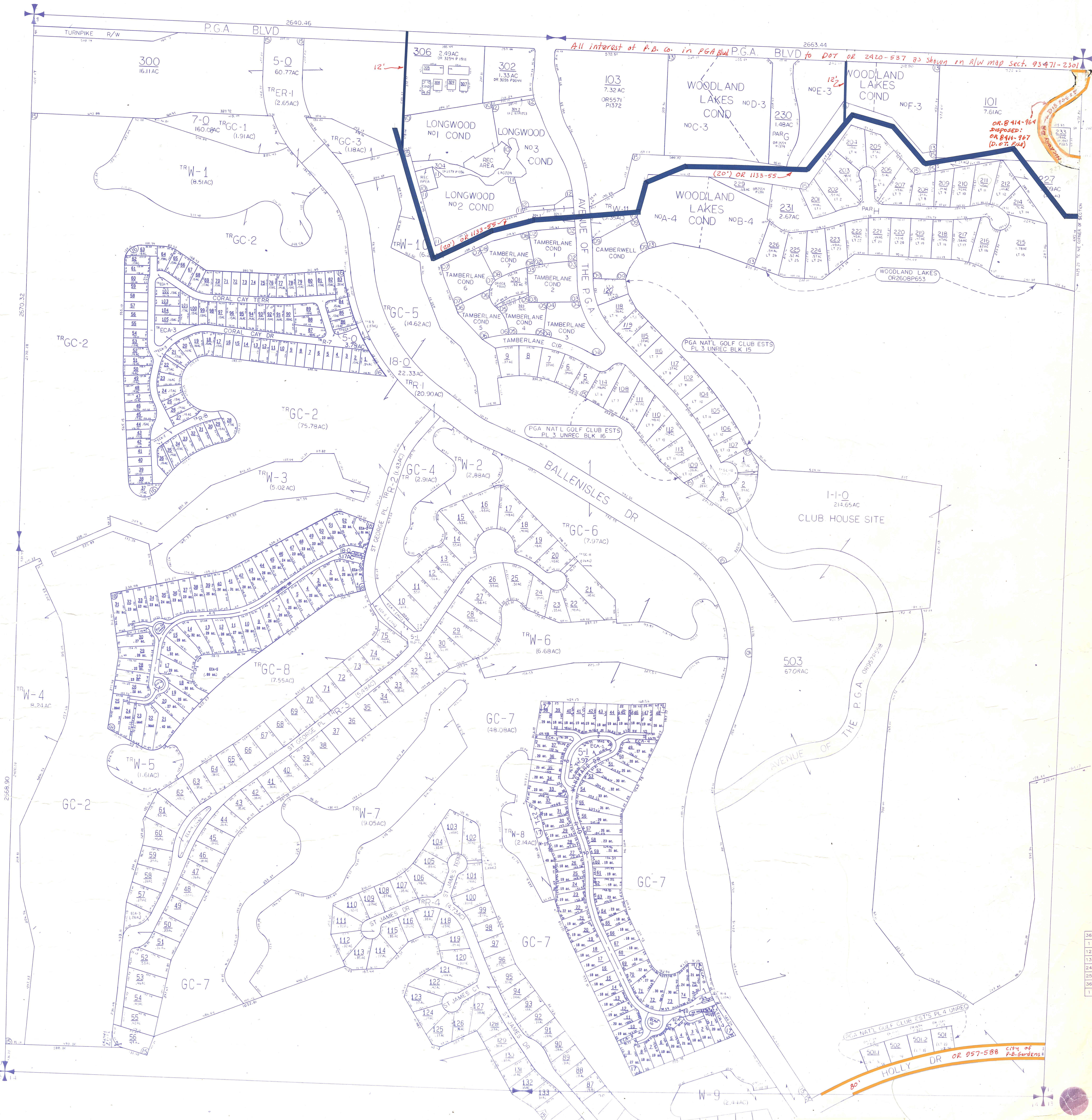
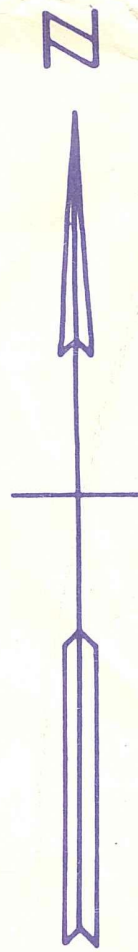


**Palm Beach County (County) makes no representation or warranties whatsoever on the attached / enclosed information reflected herein pertaining to easements, rights-of-way, setback lines, reservations, agreements, and other similar matters. The information provided herein should not be relied upon by the requesting party to confirm the existence / non-existence of facts contained herein.**

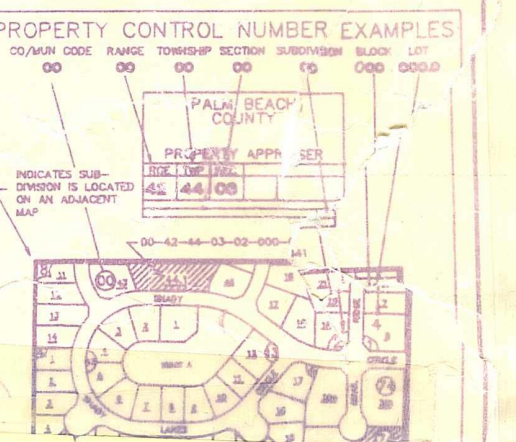


ALL OF SECTION IN MUNICIPALITY 62

E 1/2 01 PGA OF AMERICA GOLF CLUB SITE PB27P182

- NW 02 TAMBERLANE COND 1
- NW 03 TAMBERLANE COND 2
- NW 04 TAMBERLANE COND 3
- NW 05 TAMBERLANE COND 4
- NW 06 TAMBERLANE COND 5
- NW 07 TAMBERLANE COND 6
- NW 08 TAMBERLANE COND 7
- NE 09 CAMBERWELL COND
- NW 10 LONGWOOD #1 COND
- NW 11 LONGWOOD #2 COND
- NW 12 LONGWOOD #3 COND
- NE 13 WOODLAND LAKES COND (78) & (80) COND (86)
- NW 14 PGA BLVD CONCOURSE BLDG "F"

ALL OF SEC  
 NW 15 HANSEN-JDM PL 1 (90) PB64P67  
 NW 16 CORAL CAY (90) PB64P119  
 SE 17 WINDWARD COVE (91) PB65P129  
 SW 18 CRYSTAL BAY (91) PB66 P18



Handwritten notes in black ink: 24-42-42 and 11-42-42

36	31	32	33	34
1	6	5	4	3
12	7	8	9	10
13	16	17	16	18
24	19	20	21	22
25	30	29	28	27
36	31	32	33	34
1	6	5	4	3

PALM BEACH COUNTY  
 N-11

REG	TWP	SEC	AREAL
1	2	3	4
5	6	7	8
9	10	11	12
13	14	15	16
17	18	19	20
21	22	23	24
25	26	27	28
29	30	31	32
33	34	35	36
37	38	39	40
41	42	43	44
45	46	47	48
49	50	51	52
53	54	55	56
57	58	59	60
61	62	63	64
65	66	67	68
69	70	71	72
73	74	75	76
77	78	79	80
81	82	83	84
85	86	87	88
89	90	91	92
93	94	95	96
97	98	99	100