

Palm Beach County (County) makes no representation or warranties whatsoever on the attached / enclosed information reflected herein pertaining to easements, rights-of-way, setback lines, reservations, agreements, and other similar matters. The information provided herein should not be relied upon by the requesting party to confirm the existence / non-existence of facts contained herein.

Block 68
P.B. FARMS - PLAT 3

TRACTS 9-12 INC
LESS N 125'; ALSO
TRACTS 13-32 INC
LESS E 110' EASE-
MENT FOR FPL 3
LESS E 35' COUNTY
OWNED LANE & LESS
E 35' DEDICATED BY
FILE PLAT AS PER
INTER-OFFICE COMMUN.
7-24-58 - SEC. 36, T. 46
R. 41 - See File

CH # 30,000 } TRACTS
CERT. 1065 } 3 TO 32
INC.

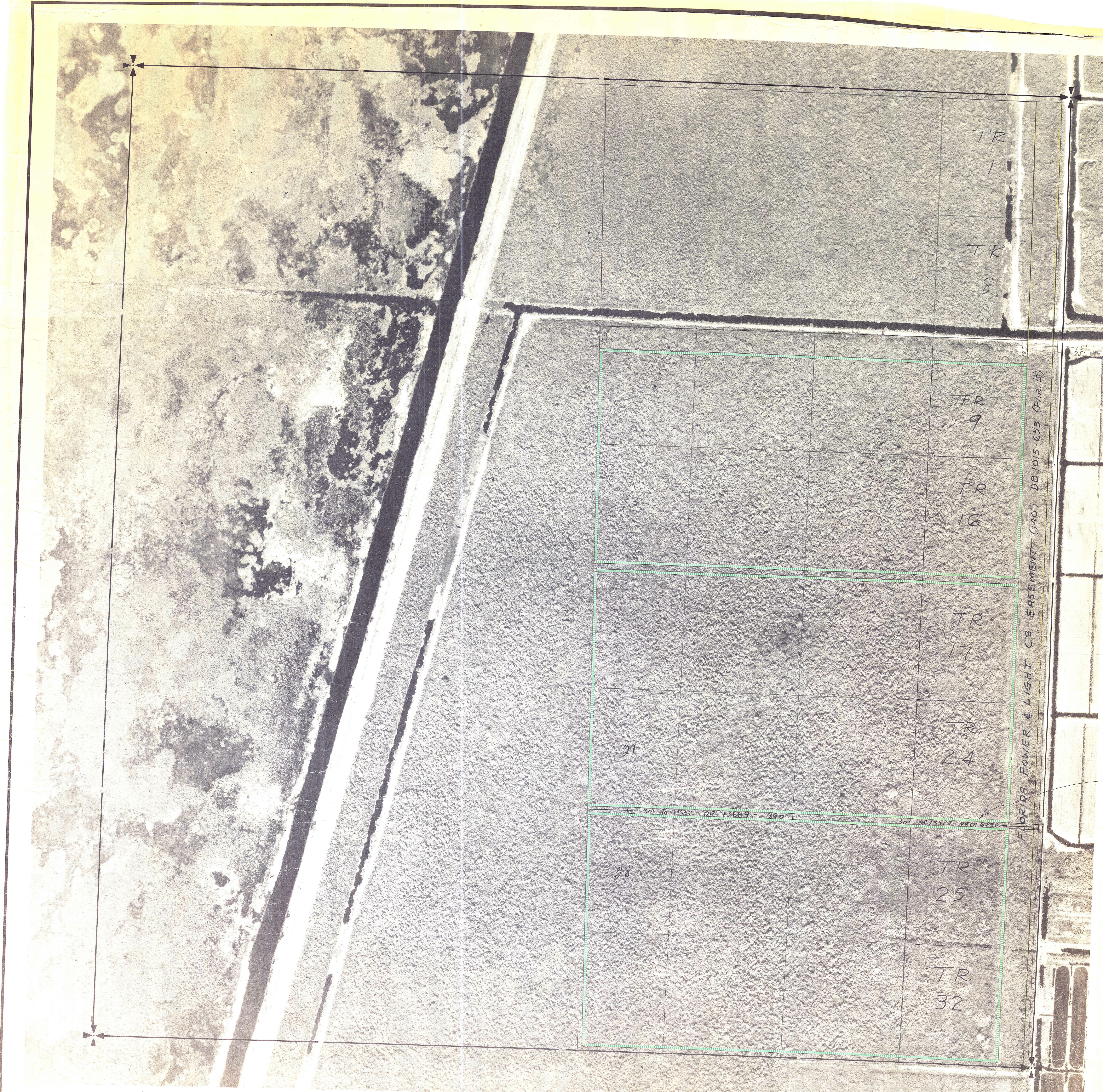
LESS TRACTS
3 TO 8 TO
LAKE WORTH
DRAINAGE DIST.
AS PER
CO-42-43-27-05-05-0030

WEST PENINSULAR TITLE
COMPANY VS. PALM BEACH
COUNTY: SEE OR 560P-1286
ATTACHED TO PALM BEACH FARMS
CO. PL. N° 3 MAP, FOR ROAD R/W
IN BKR 68

26 - 46 - 41
TO
5 - 46 - 42

PALM BEACH
COUNTY

MISC.
SEC TWP RGE.
25 46 40



Aerial Photo Date - FEB. 15, 1968

MOCK, ROOSE & SEARCY
Consulting Engineers
PHOTOGRAMMETRIC ENGINEERING BY