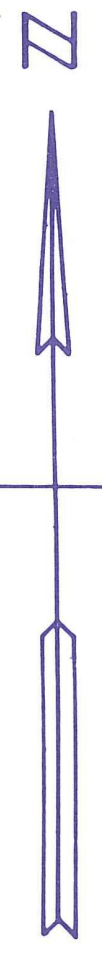
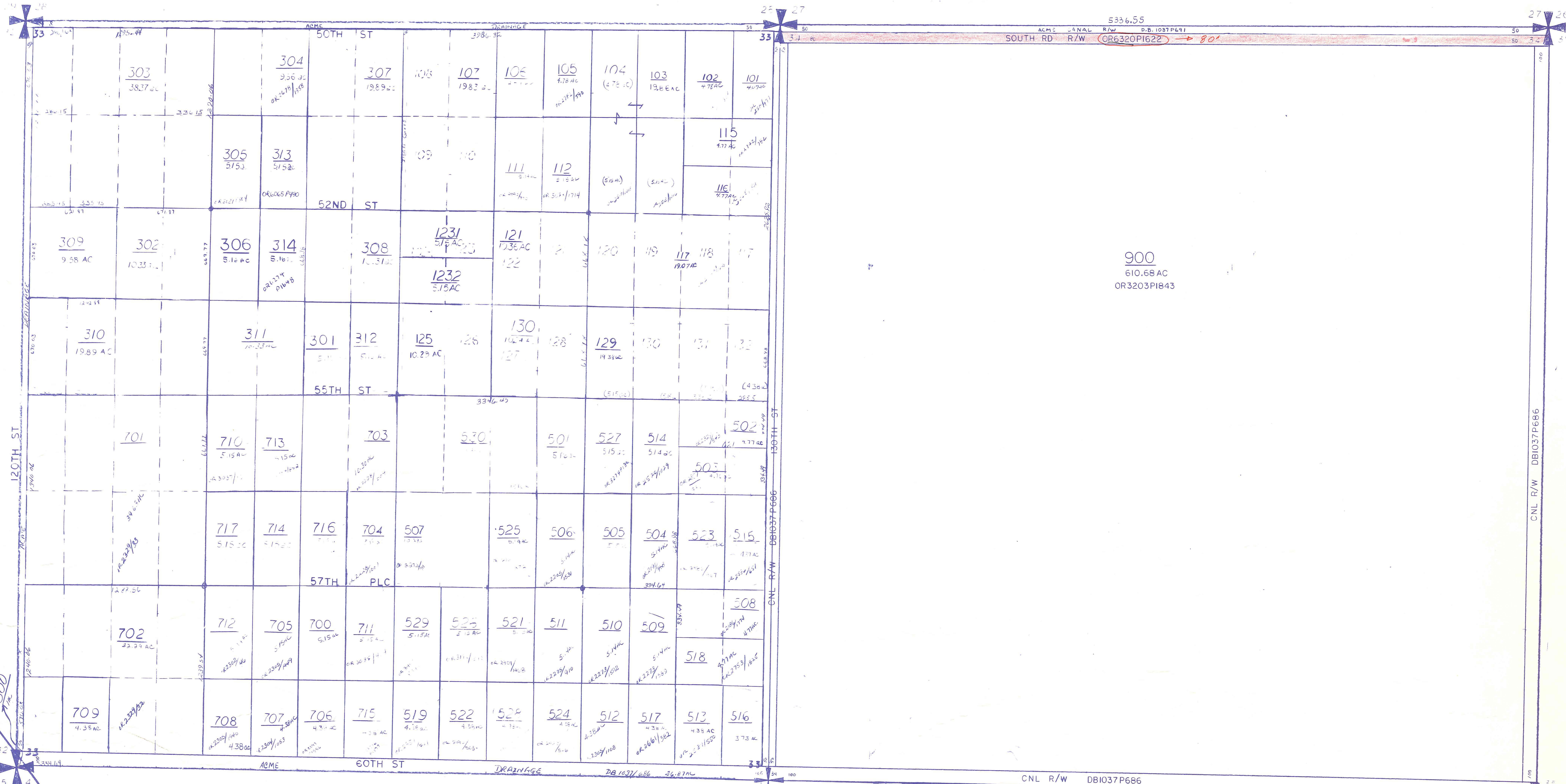
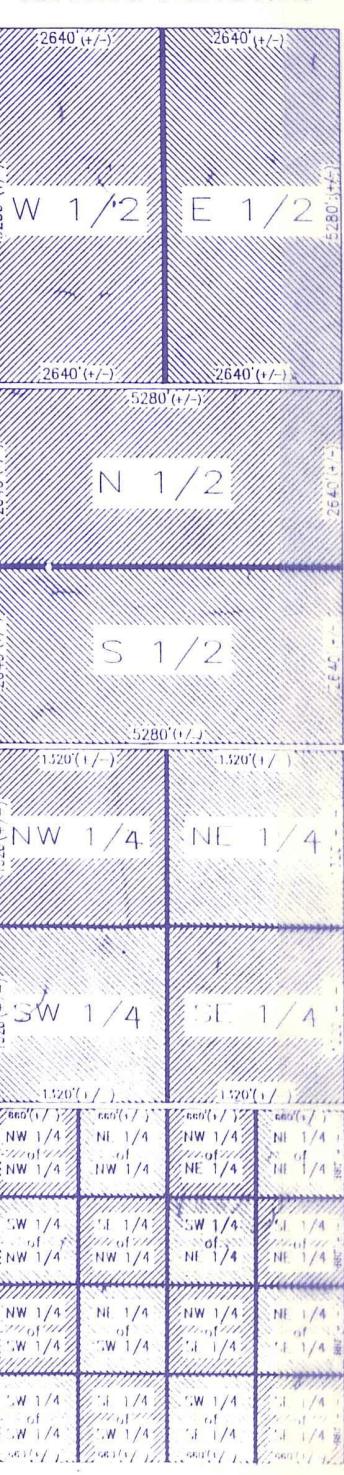


Palm Beach County (County) makes no representation or warrants whatsoever on the attached / enclosed information reflected herein pertaining to easements, rights-of-way, setback lines, reservations, agreements, and other similar matters. The information provided herein should not be relied upon by the requesting party to confirm the existence / non-existence of facts contained herein.



LEGAL DESCRIPTION SECTIONAL BREAKDOWNS



NOTE: ALL OF SECTIONS ARE IN THE COUNTY - 00

NOTE:
 NOT TO BE REPRODUCED IN ANY FORM EXCEPT BY EXPRESS WRITTEN CONSENT FROM THE PALM BEACH COUNTY ASSESSOR.
 Information shown hereon is compiled from the best available sources and CANNOT be used for surveys or land transfers of any type.

O-26 N-26
PALM BEACH COUNTY
GARY R. NIKOLITS
 PROPERTY APPRAISER

RGE	TWP	SEC	NO	AERIAL
41	44	33	34	NO 231
SCALE 1"=400'				
DRAWN BY [Signature]				
UPDATED [Date]				

FOR CONTINUATION SEE MAP # 229 (41 44 33 34)