

NOTES

- FAIRLANE FARMS ETC
- * GOULD FLORIDA TR PARC 3631-852
- * PARC TO GOULD FLORIDA TR: OR 4975-1863
- * GOULD FLORIDA RECEIVED TO P.B.C. BY OR. 4975-1866 FOR NEW ALIGNMENT.

ROADS REMOVED FROM RD. MAINTENANCE INVENTORY AS RESULT OF WELLINGTON INCORPORATION ON NOV. 7, 1995.

- NE 01 GOLF & TENNIS VILLAGE PH 1 OF P.B. POLO & CTRY CLUB (1979) PB35P185
- NE 02 GOLF COTTAGE #2 COND
- NE 03 TENNIS LODGES #1 COND (1980) PH 1 & 2
- NE 04 GOLF & TENNIS VILLAGE PH 2A OF P.B. POLO & CTRY CLUB (1982) PB41P130
- NE 05 GOLF & TENNIS VILLAGE PH 3 OF P.B. POLO & CTRY CLUB (1982) PB42P132
- NW 06 MAIDSTONE NO.1 P.B. POLO & CTRY CLUB WELLINGTON (1983) PB44P20
- SW 07 LONGWOOD GREEN P.B. POLO & CTRY CLUB WELLINGTON (1983) PB44P55 LTS 1 TO 6 & PT OF POLO CLUB RD ABND-RES R-82-938
- NE 08 GOLF & TENNIS VILLAGE PAR C P.B. POLO & CTRY CLUB WELLINGTON (1983) PB44P184
- NE 09 PEBBLEWOOD PH 1 OF P.B. POLO & CTRY CLUB WELLINGTON (1983) PB45P35
- NE 10 LAS CASITAS PH 1 OF P.B. POLO & COUNTRY CLUB (1984) PB45P51 (00)
- NE 11 PEBBLEWOOD COND (1984) PH 2 (1985)
- NE 12 PEBBLEWOOD PH 2 OF P.B. POLO & CTRY CLUB WELLINGTON (1984) PB46P76
- NE 13 PEBBLEWOOD PH 3 OF P.B. POLO & CTRY CLUB (1985) PB47P128
- NE 14 POLO CLUB RD PL 1 OF P.B. POLO & CTRY CLUB WELLINGTON (1985) PB48P28
- SW 15 MUIRFIELD PL 1 OF P.B. POLO & CTRY CLUB WELLINGTON (1985) PB48P30
- NW 16 PL 3 TOWNCENTER OF WELLINGTON (1985) PB48P121
- NE 17 LAS CASITAS PH 2 PB49P54
- NE 18 REPL OF LT 15 LONGWOOD GREEN (1985) PB49P84
- SW 19 MUIRFIELD PL 2 OF P.B. POLO & CTRY CLUB WELLINGTON (1985) PB49P166
- NE 20 FIRST FAIRWAY COND PL 1 P.B. POLO & CTRY CLUB WELLINGTON PB49P494
- NE 21 FIRST FAIRWAY COND PL 2 (1986) PB50P457
- SE 22 BROOKSIDE PL 1 (1986) PB50P175
- NE 23 PEBBLEWOOD PH 4 (1986) PB51P95
- SE 24 BROOKSIDE PL 2 (1986) PB51P95
- NE 25 LAS CASITAS PL 3 (1986) PB52P23
- W 26 WINDSOR WAY PL 1 (1986) PB52P99
- NE 27 FIRST FAIRWAY COND (88)
- SW 28 WINDSOR WAY PL 2 (1987) PB52P176
- SE 29 BROOKSIDE PL 3 (1987) PB54P75
- NE 30 LAS CASITAS PL 4 (1987) PB54P110
- NE 31 FIRST FAIRWAY COND II (1987) (88)
- SE 32 OAK TREE VILLAS (88) PB57P112
- SW 33 FAIRWAY ISLAND OF P.B. POLO & CTRY CLUB WELLINGTON (88) PB57P116
- SE 34 OAK TREE ESTATES (88) PB57P121
- SE 35 BROOKSIDE PL 4 OF P.B. POLO & CTRY CLUB WELLINGTON (88) PB58P45
- NW 36 SUNNYDALE DR OF P.B. POLO & CTRY CLUB WELLINGTON (88) PB58P82

ALL OF SECTION IN COUNTY 00

- SW 37 BENT CYPRESS (89) PB59 P13
- SW 38 SHADY OAKS OF PALM BEACH & COUNTRY CLUB (89) PB 59P117

SUES CONTINUED BELOW

NOTE:
NOT TO BE REPRODUCED IN ANY FORM EXCEPT BY EXPRESS WRITTEN CONSENT FROM THE PALM BEACH COUNTY ASSESSOR.
Information shown hereon is compiled from the best available sources and CANNOT be used for surveys or land transfers of any type.

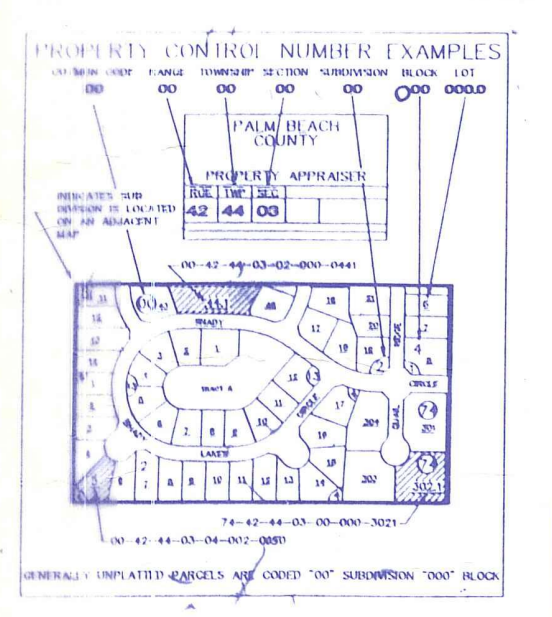
PALM BEACH COUNTY
GARY R. NIKOLITS
PROPERTY APPRAISER

RGE	TWP	SEC	AERIAL
41	44	14	NO/50 B

SCALE 1:200
DRAWN BY: QI-15
UPDATED:

Palm Beach County (County) makes no representation or warrants whatsoever on the attached / enclosed information reflected herein pertaining to easements, rights-of-way, setback lines, reservations, agreements, and other similar matters. The information provided herein should not be relied upon by the requesting party to confirm the existence / non-existence of facts contained herein.

- SE 39 OAK TREE VILLAS COND PH 1 & 2 (89)
- SW 40 KENSINGTON OF PALM BEACH POLO & CTRY CLUB WELLINGTON (90) PB62P69
- SE 41 WINDING OAKS (92) PB69P145
- SE 42 DUNES PL 1 HOLES 14 & 15 (92) PB68P158
- SE 43 LUBELLS SUB (93) PB69P164



SEE SEC. 15

SEE SEC. 15

SEE SEC. 15

SEE SEC. 15