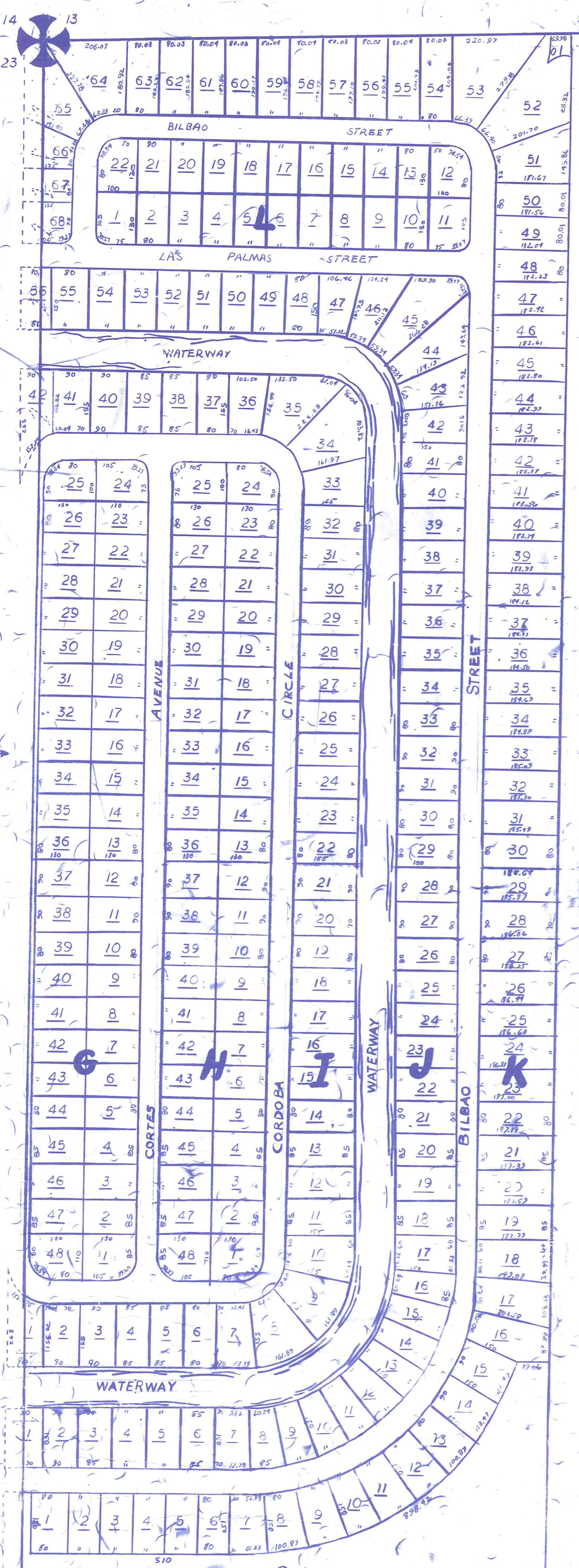


**Palm Beach County (County) makes no representation or warranties whatsoever on the attached / enclosed information reflected herein pertaining to easements, rights-of-way, setback lines, reservations, agreements, and other similar matters. The information provided herein should not be relied upon by the requesting party to confirm the existence / non-existence of facts contained herein.**



00-100  
444.75 AC

P.B. 83-65 (01)  
FOX PROPERTIES

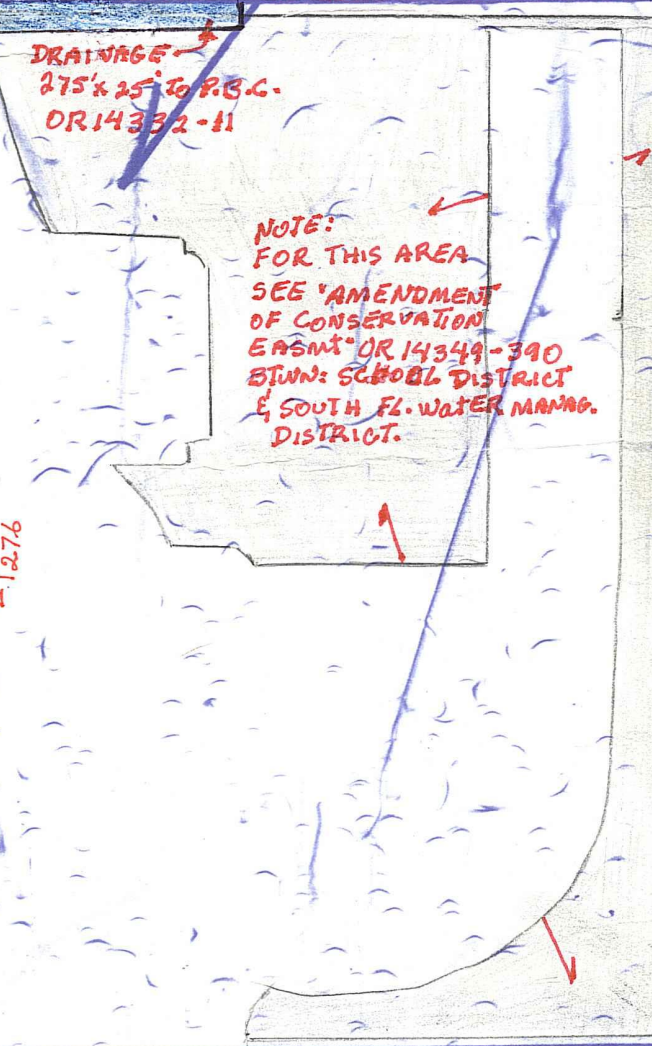
PB 83-65 (01)  
FOX PROPERTIES

PT OF SEC CODED IN COUNTY - (0)  
PT OF SEC CODED IN ROYAL PALM BEACH - (7)

18-1  
17,90 AC  
TRACT "B"  
DEDICATED TO THE VILLAGE OF ROYAL PALM BEACH FOR PUBLIC USE

TRACT "A"  
DEDICATED TO THE VILLAGE OF ROYAL PALM BEACH FOR PUBLIC USE

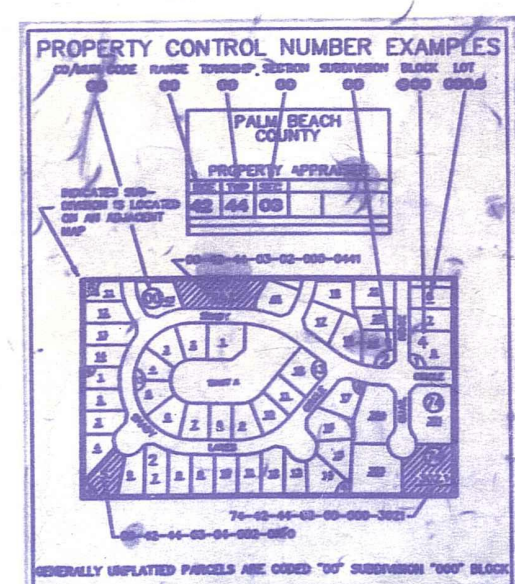
OKEECHOBEE BOULEVARD



NOTE: ABSTRACTORS COULD NOT FIND THIS CORNER

NOTE: FOR THIS AREA SEE AMENDMENT OF CONSERVATION GRANT OR 1988-1990 BY THE SOUTH PALM WATER MAIN DISTRICT

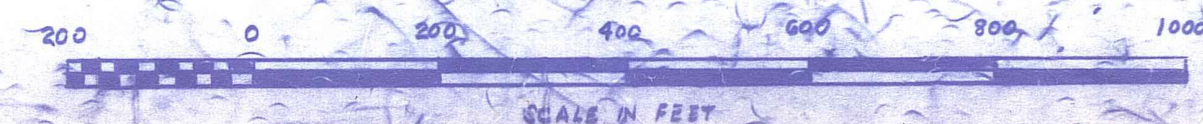
NOTE:  
NOT TO BE REPRODUCED IN ANY FORM EXCEPT BY EXPRESS WRITTEN CONSENT FROM THE PALM BEACH COUNTY ASSESSOR.



Information shown hereon is compiled from the best available sources and CANNOT be used for surveys or land transfers of any type.

**PALM BEACH COUNTY**  
N-21

PROPERTY APPRAISER			
RGE	TWP	SEC	AERIAL
41	43	24	NO 155 D
SCALE 1"=200'			
DRAWN BY: OLLIS J. HAYES			
UPDATED: 7-7-92 LBS			



50' TO P.B. CO. DB 47-457 conveyed to Royal Palm Bch. Co. Inc. re 2320-1900. Corrected OR 2423-1045

THE WILLOWS FARM ADDITION IS CODED IN SEC 24-93-11

SEE P.B. # 7 PB 5-58 & Sect. 21/50 43-42

TO P.B. CO. DB 848-370 Proposed to POT DB 892-153 (Filed 11-22-10)

DB 842-548

RANGE LINE

LA MANCHA IS CODED IN IN 11-43-41

LA MANCHA IS CODED IN IN 11-43-41