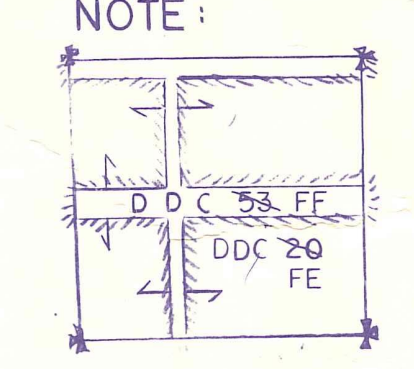


★ UND. 1/2 INT. GAS, OIL & MINERAL RGTS.

ALL OF THE SECTION IS IN THE COUNTY AND IS CODED 00.

NOTE: ACREAGE BASED ON STANDARD SECTION OF 640 ACRES. EACH PARCEL 1.25 ACRES UNLESS OTHERWISE NOTED.

NOTE: ROYAL PALM BEACH COLONY INC. LOT NUMBERS ARE SHOWN IN THE UPPER LEFT CORNER OF EACH LOT.



Palm Beach County (County) makes no representation or warrants whatsoever on the attached / enclosed information reflected herein pertaining to easements, rights-of-way, setback lines, reservations, agreements, and other similar matters. The information provided herein should not be relied upon by the requesting party to confirm the existence / non-existence of facts contained herein.

NOTE:
NOT TO BE REPRODUCED IN ANY FORM EXCEPT BY EXPRESS WRITTEN CONSENT FROM THE PALM BEACH COUNTY PROPERTY APPRAISER
Information shown hereon is compiled from the best available sources and CANNOT be used for surveys or land transfers of any type.

PALM BEACH COUNTY
GARY R. NIKOLITS
PROPERTY APPRAISER

RGE	TWP	SEC	AERIAL
41	43	11	NO 58-44
SCALE 1" = 200'			
DRAWN BY D. SELLERS 7/12/78			
UPDATED 1/11/83			