

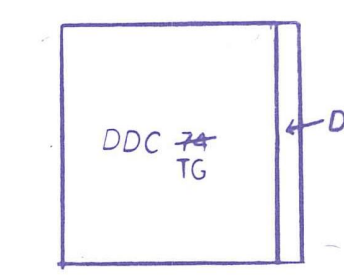


**Palm Beach County (County)** makes no representation or warranties whatsoever on the attached / enclosed information reflected herein pertaining to easements, rights-of-way, setback lines, reservations, agreements, and other similar matters. The information provided herein should not be relied upon by the requesting party to confirm the existence / non-existence of facts contained herein.

LEGAL DESCRIPTION SECTIONAL BREAKDOWNS

W 1/2	E 1/2
N 1/2	
S 1/2	
SW 1/4	NE 1/4
SW 1/4	SE 1/4

NOTE:  
PAR LYG ON W LI JUPITER FMS RD DDC 24  
REMAINDER DDC 24: 26  
TG TH



USDS INDICATE 1/4 W 1/4 LI LOCATED 1/2 OF N LI CNL RW FOOTAGE UNDETERMINED!

PARCEL ACREAGE PER DEEDS + SOLKOFF ENGR

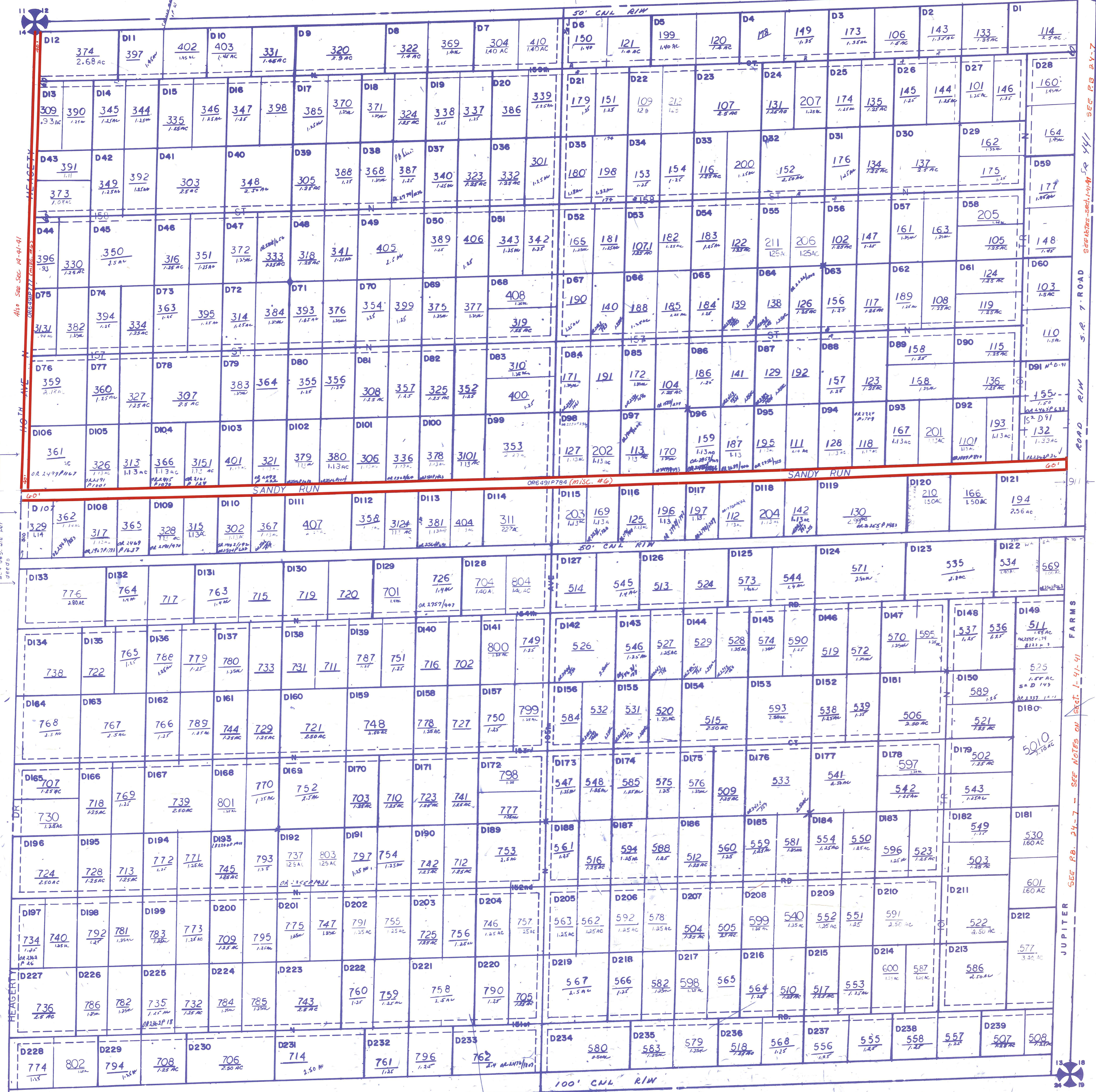
NOTE:  
ALL ROAD EASEMENTS 60' OR AS NOTED:  
LIMITED SECTION DATA

ALL OF SECTION IN COUNTY-00

NOTE:  
NOT TO BE REPRODUCED IN ANY FORM EXCEPT BY EXPRESS WRITTEN CONSENT FROM THE PALM BEACH COUNTY PROPERTY APPRAISER  
Information shown herein is compiled from the best available sources and CANNOT be used for surveys or land transfers of any type.

**PALM BEACH COUNTY**  
Misc.  
PROPERTY APPRAISER

RGE	TWP	SEC	AERIAL
41	41	13	N089-114
SCALE 1"=200'			
DRAWN BY McADAMS 1-7-79			
UPDATED 04-11-79			



PALM BEACH COUNTY ESTATE SECTION D



WATCH DESC. CLOSELY  
AC. 085- W/4 085-085

Also See Sec. 14-41-41

SEE FB 24-7

SEE FB 24-7

SEE FB 24-7

SEE FB 24-7

SEE FB 24-7

SEE FB 24-7