

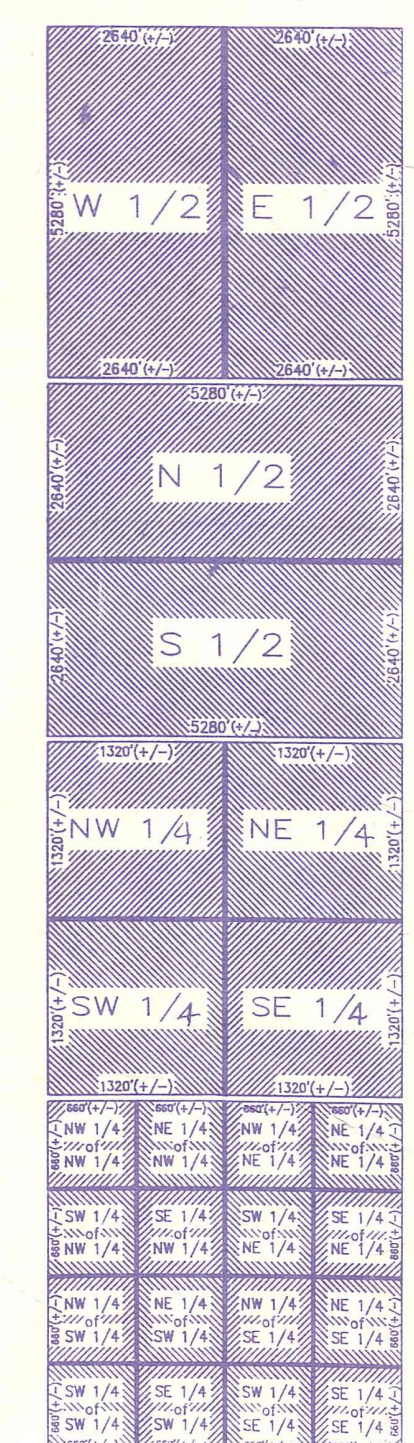
Palm Beach County (County) makes no representation or warranties whatsoever on the attached / enclosed information reflected herein pertaining to easements, rights-of-way, setback lines, reservations, agreements, and other similar matters. The information provided herein should not be relied upon by the requesting party to confirm the existence / non-existence of facts contained herein.

01 LAS FLORES RANCHOS (80)
OR 3014P1515
02 DEER RUN PLAT NO.2 (83)
PB44P171
PART OF SUB HAS BEEN
ABANDONED OR 4851P1228

AG PARCEL W/HOMESTEAD EXEMPTION
PER: S.O.H

NOTE:
ALL OF SEC. 15 IS
COUNTY & CODED ☉

LEGAL DESCRIPTION
SECTIONAL BREAKDOWNS

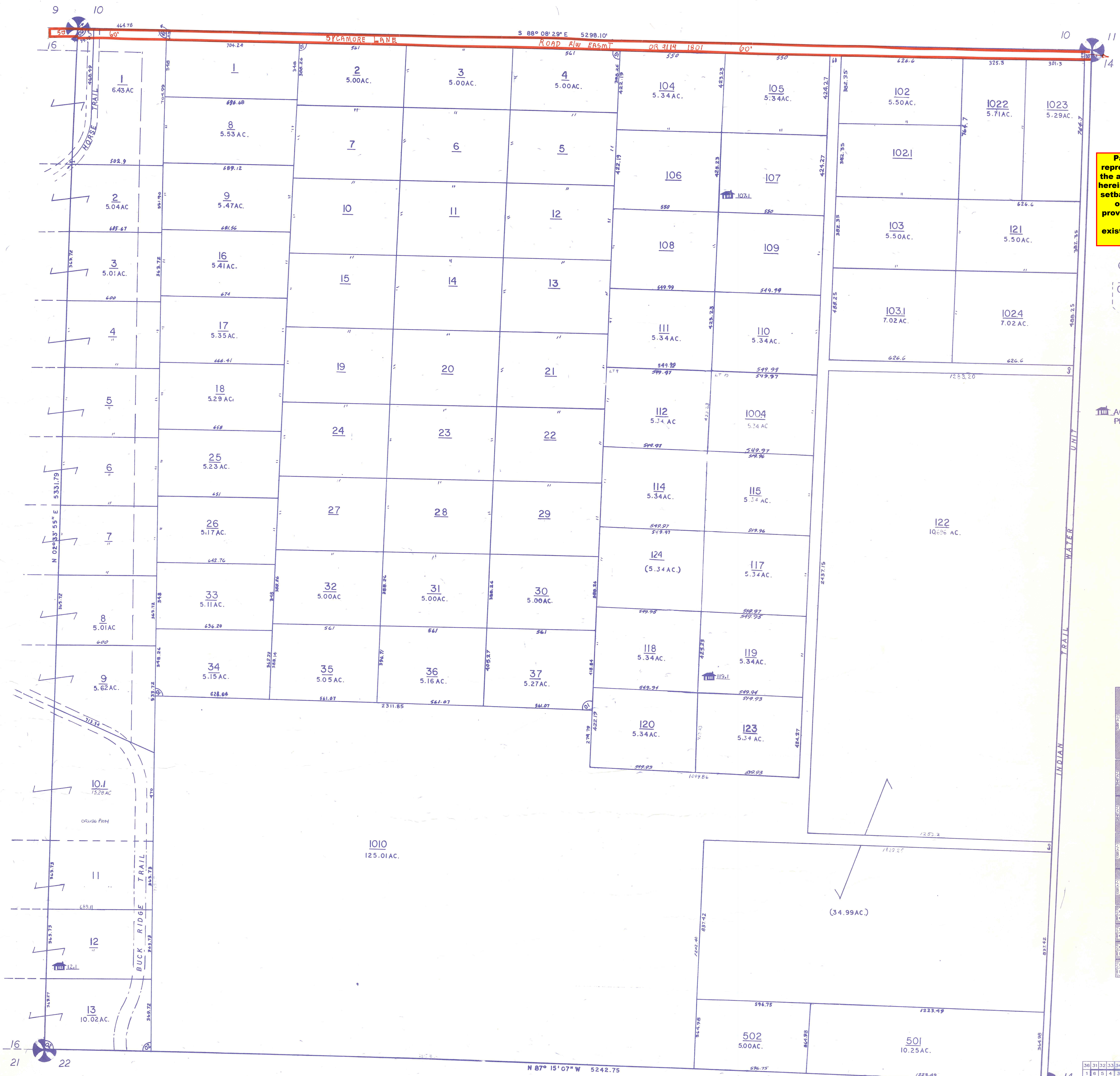


NOTE:
NOT TO BE REPRODUCED IN
ANY FORM EXCEPT BY EXPRESS
WRITTEN CONSENT FROM THE
PALM BEACH COUNTY
PROPERTY APPRAISER
Information shown herein is
compiled from the best available
sources and CANNOT be used
for surveys or land transfers of
any type.

PALM BEACH COUNTY
GARY R. NIKOLITS
PROPERTY APPRAISER

36	31	32	33	34	35	36	31
1	6	5	4	3	2	1	6
13	18	17	16	15	14	13	18
24	19	20	21	22	23	24	19
25	30	29	28	27	26	25	30
36	31	32	33	34	35	36	31
1	6	5	4	3	2	1	6

RGE	TWP	SEC.	AERIAL
40	43	15	NO 17-14
SCALE		1" = 200'	
DRAWN BY		WCO III 3-10-53	
UPDATED			



N 87° 15' 07" W 5242.75