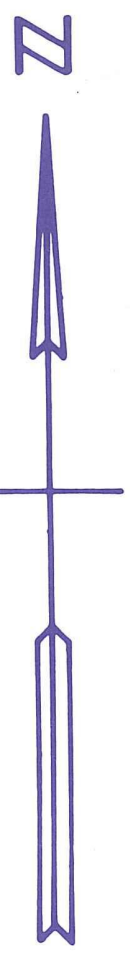
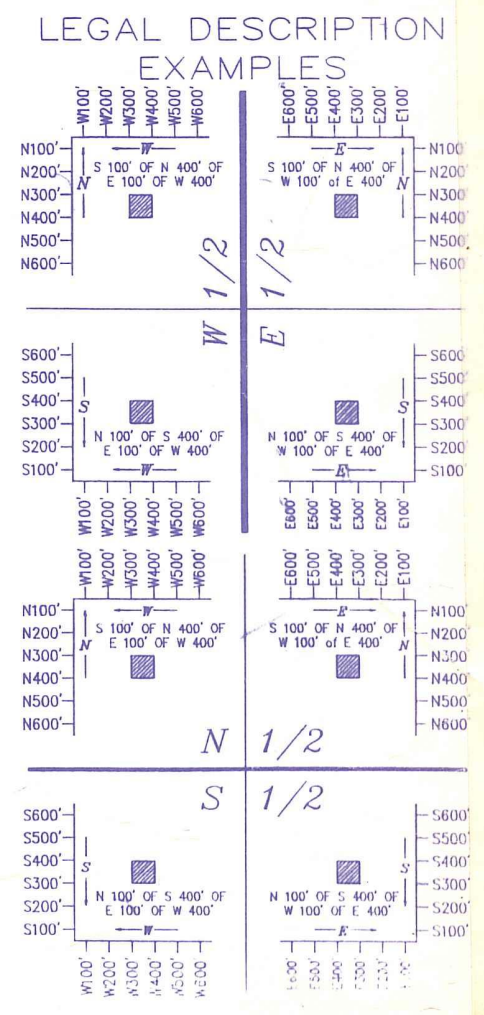


Palm Beach County (County) makes no representation or warranties whatsoever on the attached / enclosed information reflected herein pertaining to easements, rights-of-way, setback lines, reservations, agreements, and other similar matters. The information provided herein should not be relied upon by the requesting party to confirm the existence / non-existence of facts contained herein.



NOTE: SEE DECLARATION OF EASEMENT IN FAVOR OF INDIAN TRAIL WATER CONTROL DISTRICT (ALL THE SECS.) 8-9-50 AMENDED DECLARATION OF EASEMENT - OR 1725-958 N 2165.6' E 1/2



ALL OF SEC 00
PARCEL KEY

36	31	32	33	34	35	36	31
1	8	5	4	3	2	1	6
12	7	8	9	10	11	12	7
13	18	17	16	15	14	13	18
24	19	20	21	22	23	24	19
25	30	29	28	27	26	25	30
36	31	32	33	34	35	36	31
1	8	5	4	3	2	1	6

NOTE: TOTAL ACRES 696.31

UND 1/2 INT GAS, OIL & MIN RGT S

NOTE: NOT TO BE REPRODUCED IN ANY FORM EXCEPT BY EXPRESS WRITTEN CONSENT FROM THE PALM BEACH COUNTY PROPERTY APPRAISER
Information shown herein is compiled from the best available sources and CANNOT be used for surveys or land transfers of any type.

PALM BEACH COUNTY
GARY R. NIKOLITS
PROPERTY APPRAISER

RGE	TWP	SEC	AERIAL
40	42	24	NO

SCALE: 1" = 200'
DRAWN BY: MF ODOM
UPDATED: 5/6/2010

UND 1/2 INT OIL, GAS & MIN RT
UND 1/2 INT OIL, GAS & MIN RT

80'

80'

60'

RPBC-0