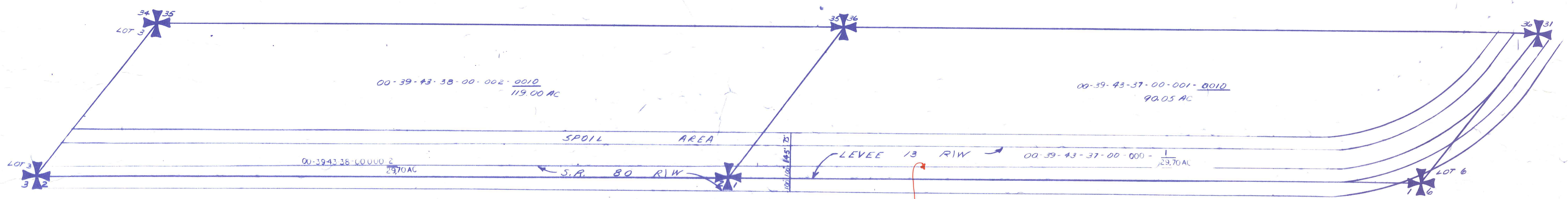
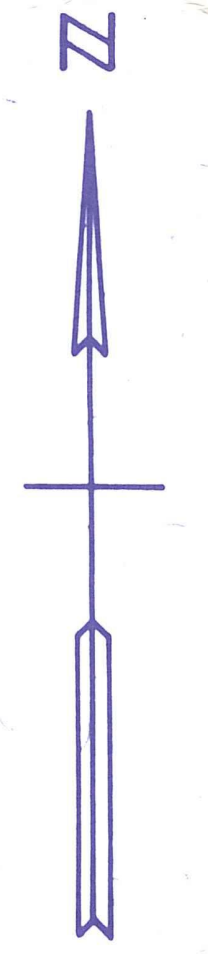


Palm Beach County (County) makes no representation or warranties whatsoever on the attached / enclosed information reflected herein pertaining to easements, rights-of-way, setback lines, reservations, agreements, and other similar matters. The information provided herein should not be relied upon by the requesting party to confirm the existence / non-existence of facts contained herein.



NOTE: PDC. Disposed on Lots 2 & 1
 TR. N^o CF-100-015 4y16
 S'N. OF N. EDGE OF PAVEMENT:
 SR-80 - OR 10362-1201

ALL LOTS IN COUNTY - 00

NOTE:
 NOT TO BE REPRODUCED IN
 ANY FORM EXCEPT BY EXPRESS
 WRITTEN CONSENT FROM THE
 PALM BEACH COUNTY
 ASSESSOR.
 Information shown hereon is
 compiled from the best available
 sources and CANNOT be used
 for surveys or land transfers of
 any type.

Y-21 X-21

PALM BEACH COUNTY
GARY R. NIKOLITS
 PROPERTY APPRAISER

RGE	TWP	SEC	LOTS	AERIAL
39	43 1/2		2 & 1	NO
SCALE		1" = 400'		
DRAWN BY				
UPDATED 1/9/97 Scah				

DRAWING 44-141 23795