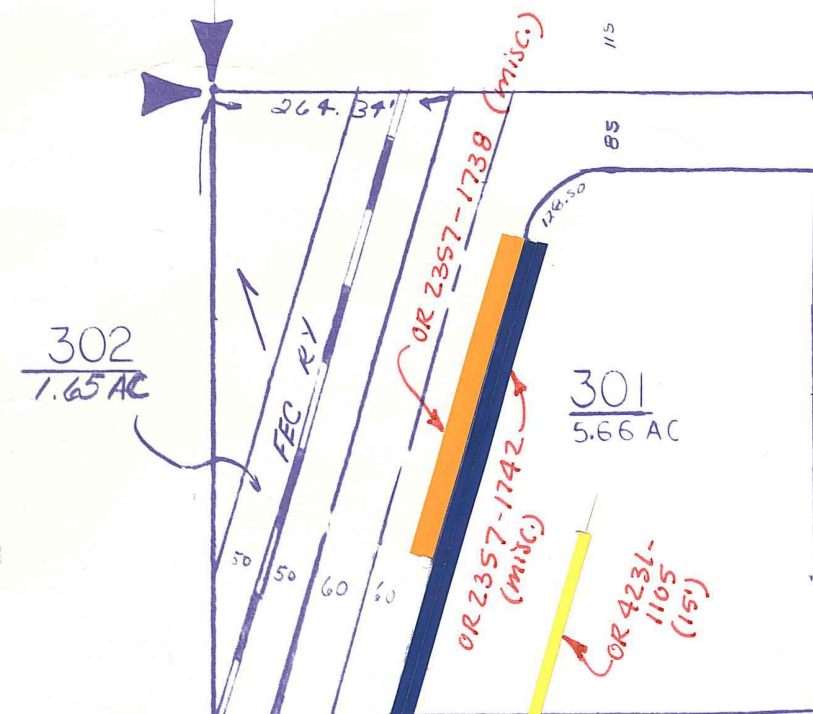
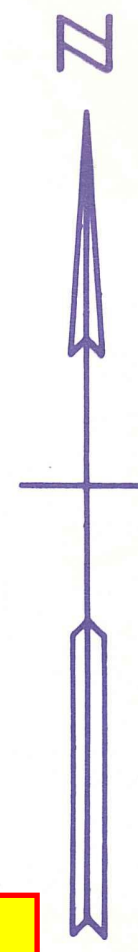


S F C D L A T N O 3-2



500
613.27 AC



Palm Beach County (County) makes no representation or warrants whatsoever on the attached / enclosed information reflected herein pertaining to easements, rights-of-way, setback lines, reservations, agreements, and other similar matters. The information provided herein should not be relied upon by the requesting party to confirm the existence / non-existence of facts contained herein.

ALL OF SECTION IN COUNTY 00

NOTE:
NOT TO BE REPRODUCED IN ANY FORM EXCEPT BY EXPRESS WRITTEN CONSENT FROM THE PALM BEACH COUNTY ASSESSOR.

Information shown hereon is compiled from the best available sources and CANNOT be used for surveys or land transfers of any type.

NN-18

PALM BEACH COUNTY
Misc. **REBECCA E. WALKER**
 COUNTY ASSESSOR

RGE	TWP	SEC	AERIAL
37	43	20	NO 44-35
SCALE		1"=200'	
DRAWN BY		M-ADAMS	
UPDATED			

DRAWING 44-41 23735