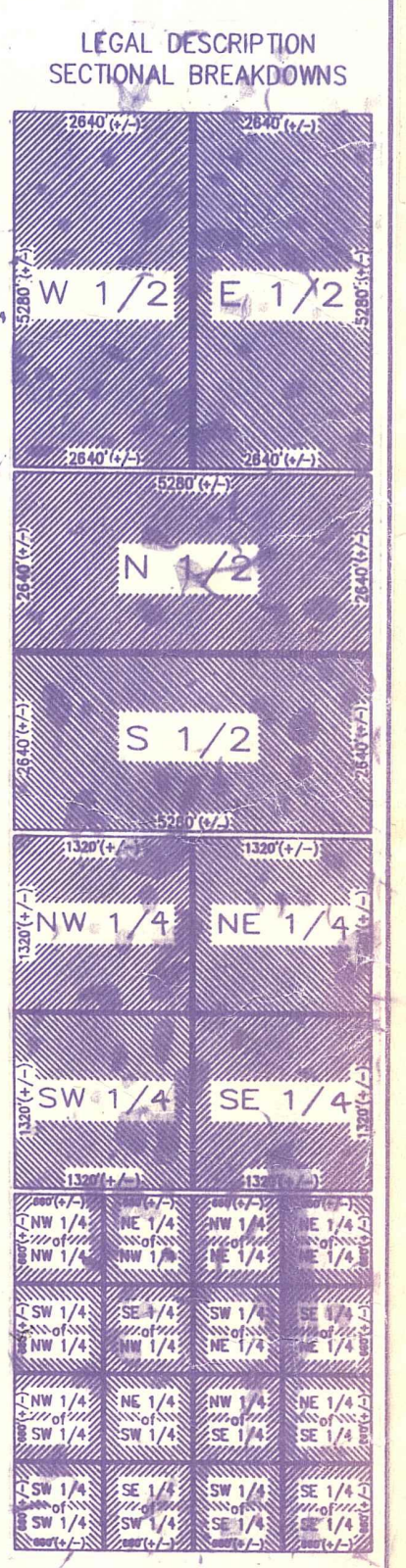


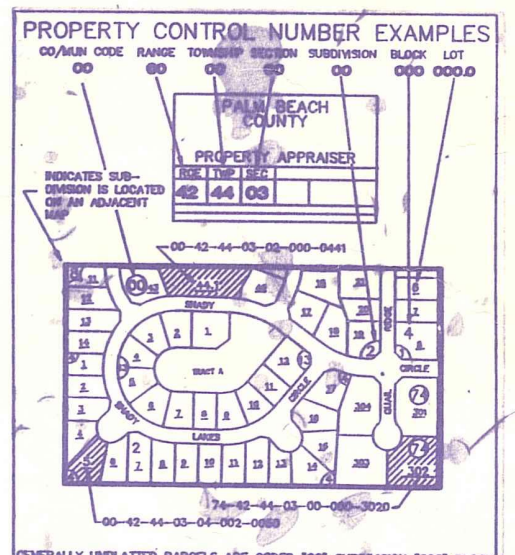
- ALL 01 SUB OF SEC PB7P2
 NE 02 BAILEYS SUB PB18P28
 NW 03 BOUNDRY & ROADWAY PL PB29P67
 NE 04 BOUNDRY & ROADWAY PROJECT 21-4 PB29P98
 NE 05 STREAMLINE VILLAGE PB38P10
 NW 06 PEE HOKEY PB38P60
 NE 07 PEE HOKEY VILLAGE (87) PB53P148

Palm Beach County (County) makes no representation or warranties whatsoever on the attached / enclosed information reflected herein pertaining to easements, rights-of-way, setback lines, reservations, agreements, and other similar matters. The information provided herein should not be relied upon by the requesting party to confirm the existence / non-existence of facts contained herein.



NOTE: PART OF SEC IS IN COUNTY & PART IN PAMOOKEE

NOTE:
 NOT TO BE REPRODUCED IN ANY FORM EXCEPT BY EXPRESS WRITTEN CONSENT FROM THE PALM BEACH COUNTY ASSESSOR.



Information shown herein is compiled from the best available sources and CANNOT be used for surveys or land transfers of any type.

PALM BEACH COUNTY
 Misc
 PROPERTY APPRAISER

30	31	32	33	34	35	36	37
1	2	3	4	5	6	7	8
9	10	11	12	13	14	15	16
17	18	19	20	21	22	23	24
25	26	27	28	29	30	31	32
33	34	35	36	37	38	39	40
41	42	43	44	45	46	47	48
49	50	51	52	53	54	55	56
57	58	59	60	61	62	63	64

RGE	TWP	SEC	AERIAL
37	42	20	NO1215
SCALE	1"=200'		
DRAWN BY	GRICE 9-14-73		
UPDATED	12/29/73		