

Monthly Jail Trends (as of February 29, 2024)

Source: Data maintained by Palm Beach County Sheriff's Office, Booking Information Retrieval System (BIRS). Data computations and visualization completed by the Research and Planning Unit. Note: Aggregate Table and visualizations provided to ISLG/CUNY March 19, 2024. These trend data are reported to all sites as part of the SJC Monthly Jail Trends report [updated to include Race & Ethnicity].

March 19, 2024
10th Floor, Email Distribution
Criminal Justice Commission

Research and Planning Team



Supported by the John D. and Catherine T. MacArthur Foundation



CJC Index and Source Data for Power BI Jail Trends

Page	Description
1	Title Page
2	Index
3	Confined Average Daily Population (ADP) from Baseline
4	Confined Average Daily Population (ADP) from Target
5	Average Daily Population (ADP) by Race & Ethnicity
6	Relative Rate Index (RRI) based on Average Daily Population (ADP) by Race & Ethnicity
7	Confined Admissions
8	Confined Admissions by Race & Ethnicity
9	Confined Average Length of Stay (LOS) Days
10	Confined Average Length of Stay (LOS) by Race & Ethnicity
11	Confined Average Daily Population (ADP) by Felony & Misdemeanor
12	Felony - Confined Average Daily Population (ADP) by Race & Ethnicity
13	Felony - Confined Average LOS by Race & Ethnicity
14	Misdemeanor - Confined Average Daily Population (ADP) by Race & Ethnicity
15	Misdemeanor - Confined Average LOS by Race & Ethnicity
16	Confined Average Daily Population (ADP) by Felony & Misdemeanor
17	Felony - Confined Average Daily Population (ADP) by Race & Ethnicity
18	Misdemeanor - Confined Average Daily Population (ADP) by Race & Ethnicity
19	Our Data Quality & Thank You

Sources:

PBSO Booking Information Retrieval System (BIRS)

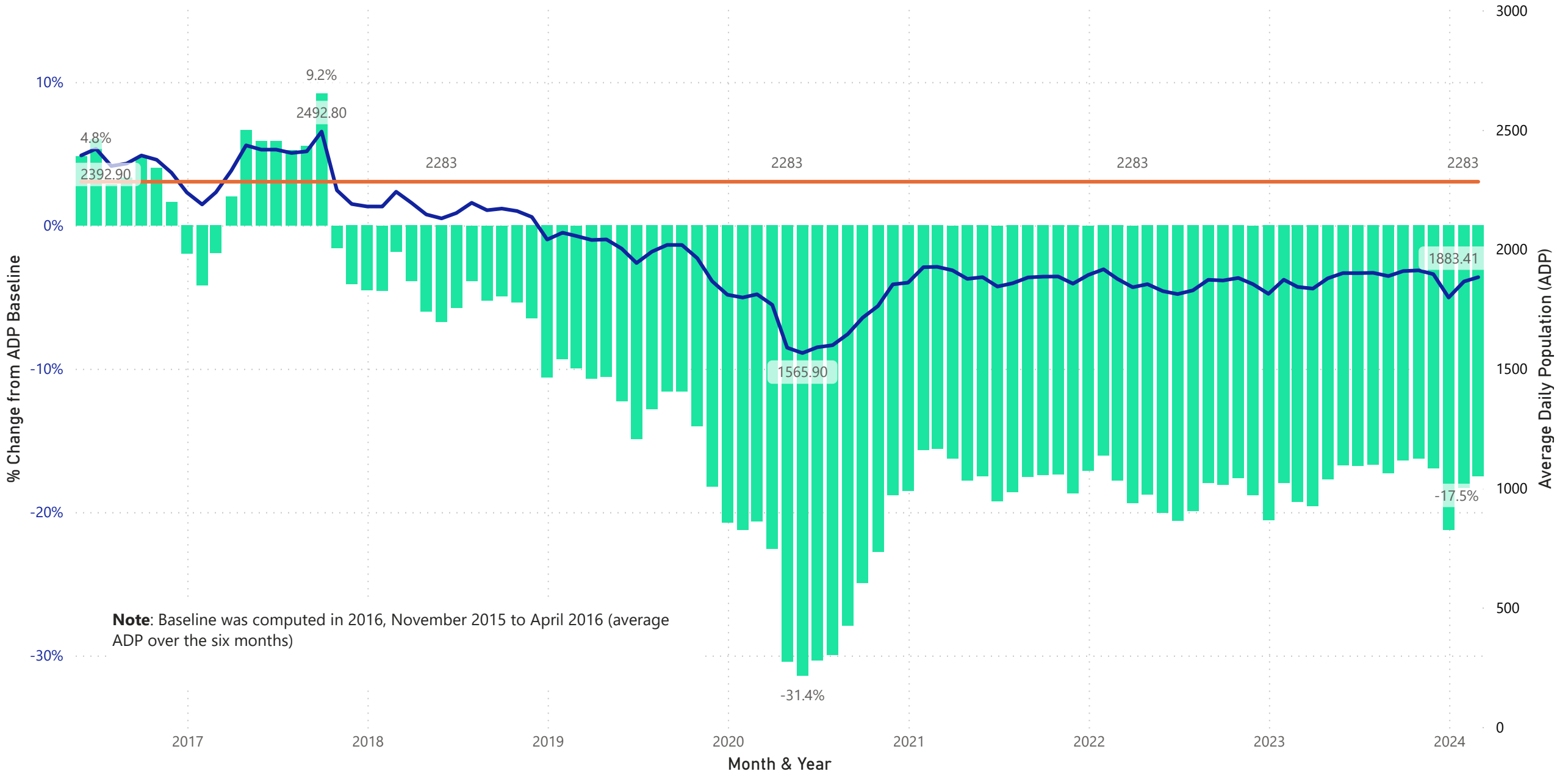
Processed: MATCHED ISLG MOVEMENT FILE RECORDS - AS OF FEB 29, 2024 (DOE 01-MAR-2024).sav



PBSO Booking Information Retrieval System

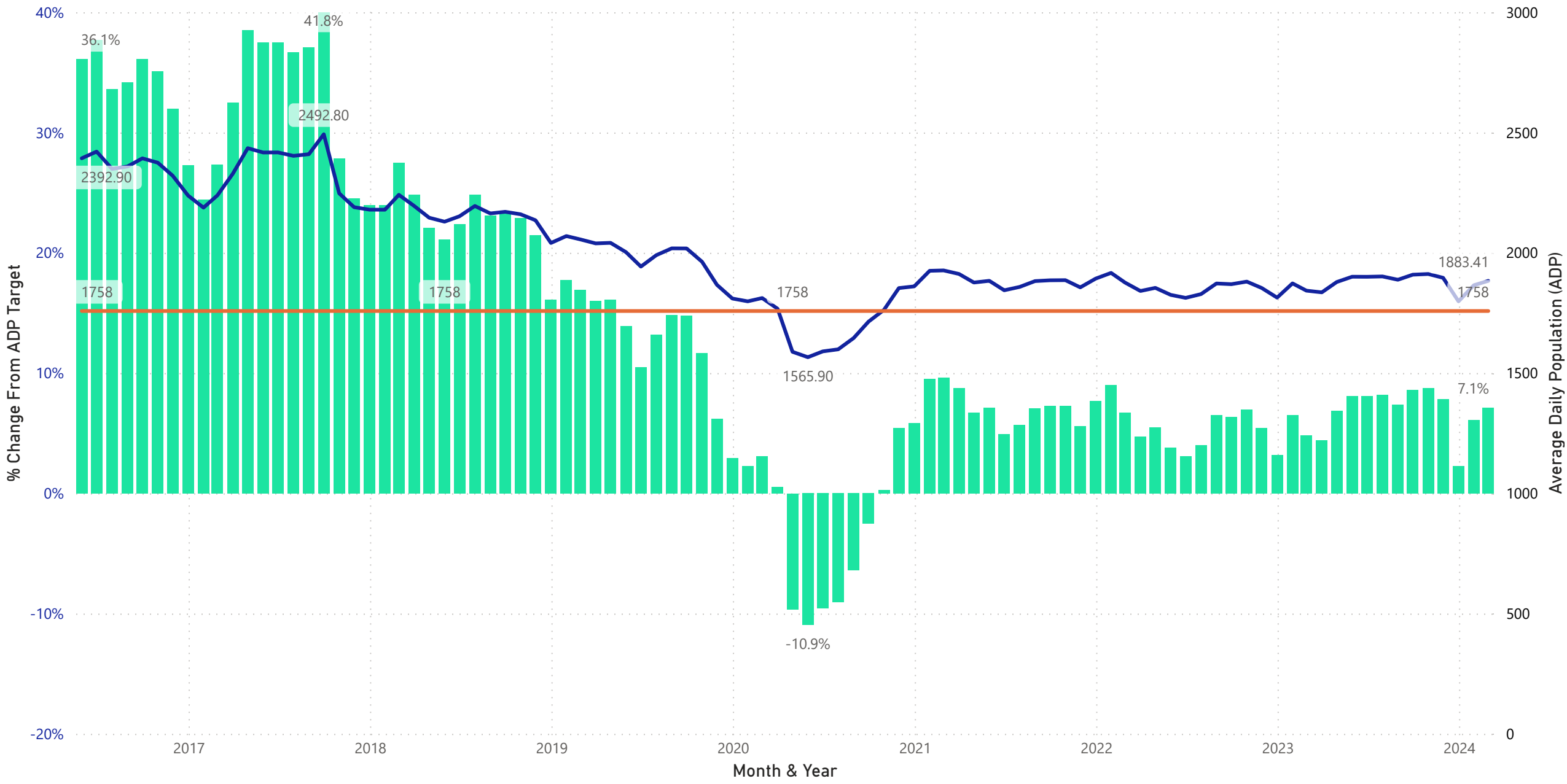
Confined Average Daily Population (ADP) from Baseline

● % Change From ADP Baseline ● Average Daily Population (ADP) ● ADP Baseline (2283)



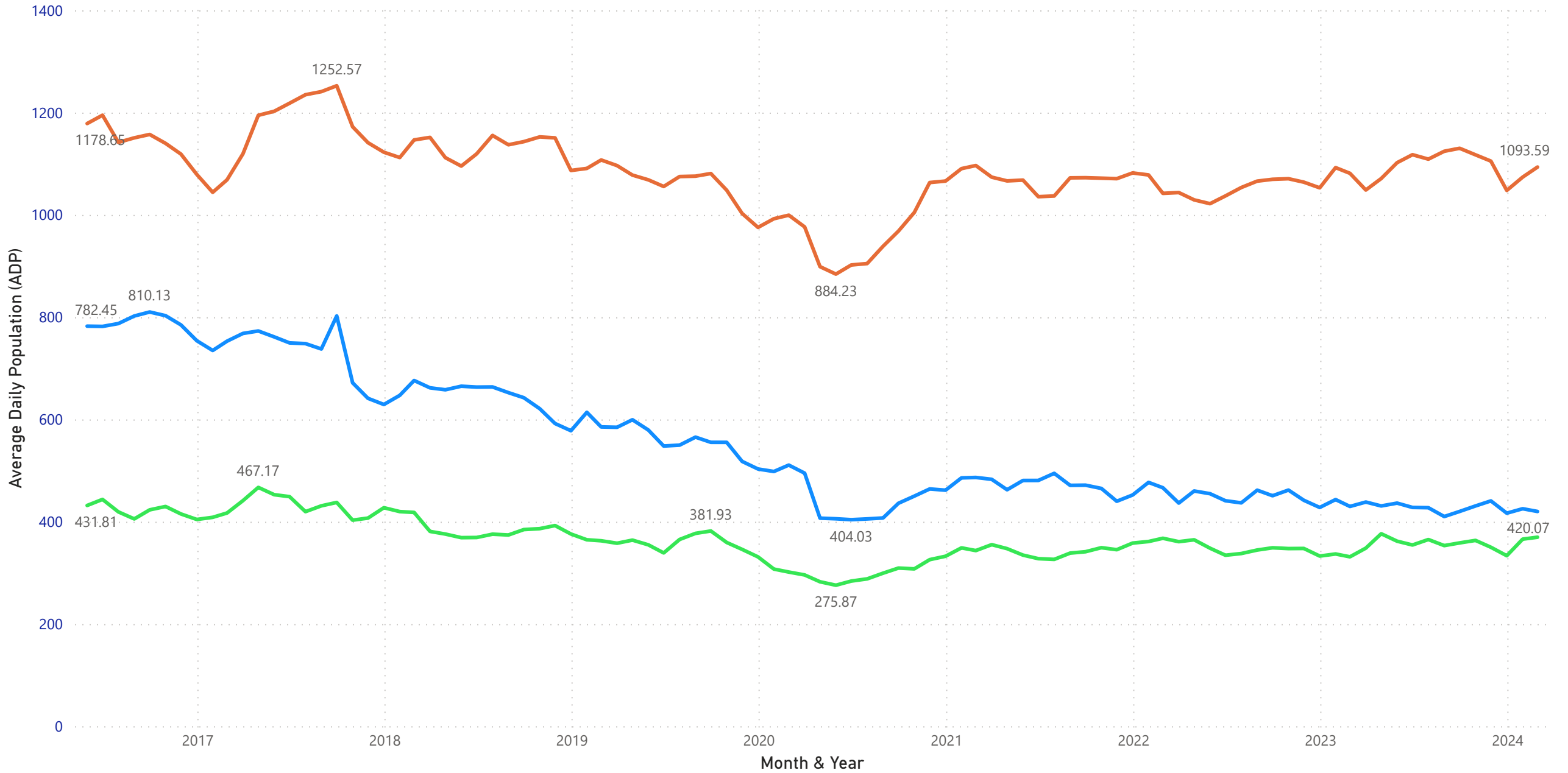
Confined Average Daily Population (ADP) from Target

● % Change From ADP Target ● Average Daily Population (ADP) ● ADP Target (1758)



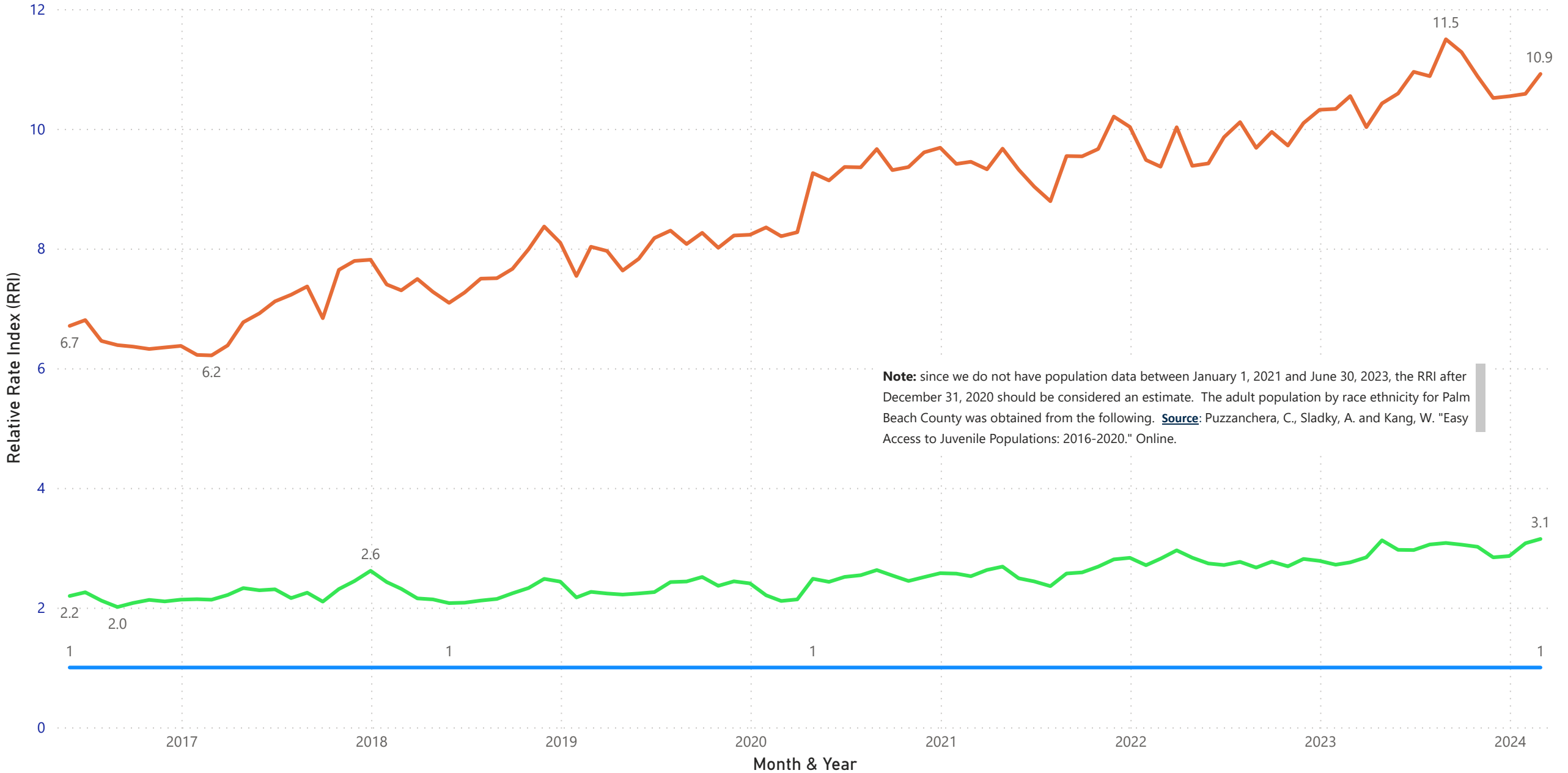
Average Daily Population (ADP) by Race & Ethnicity

● Black ● White ● LatinX



Relative Rate Index (RRI) based on Average Daily Population (ADP) by Race & Ethnicity

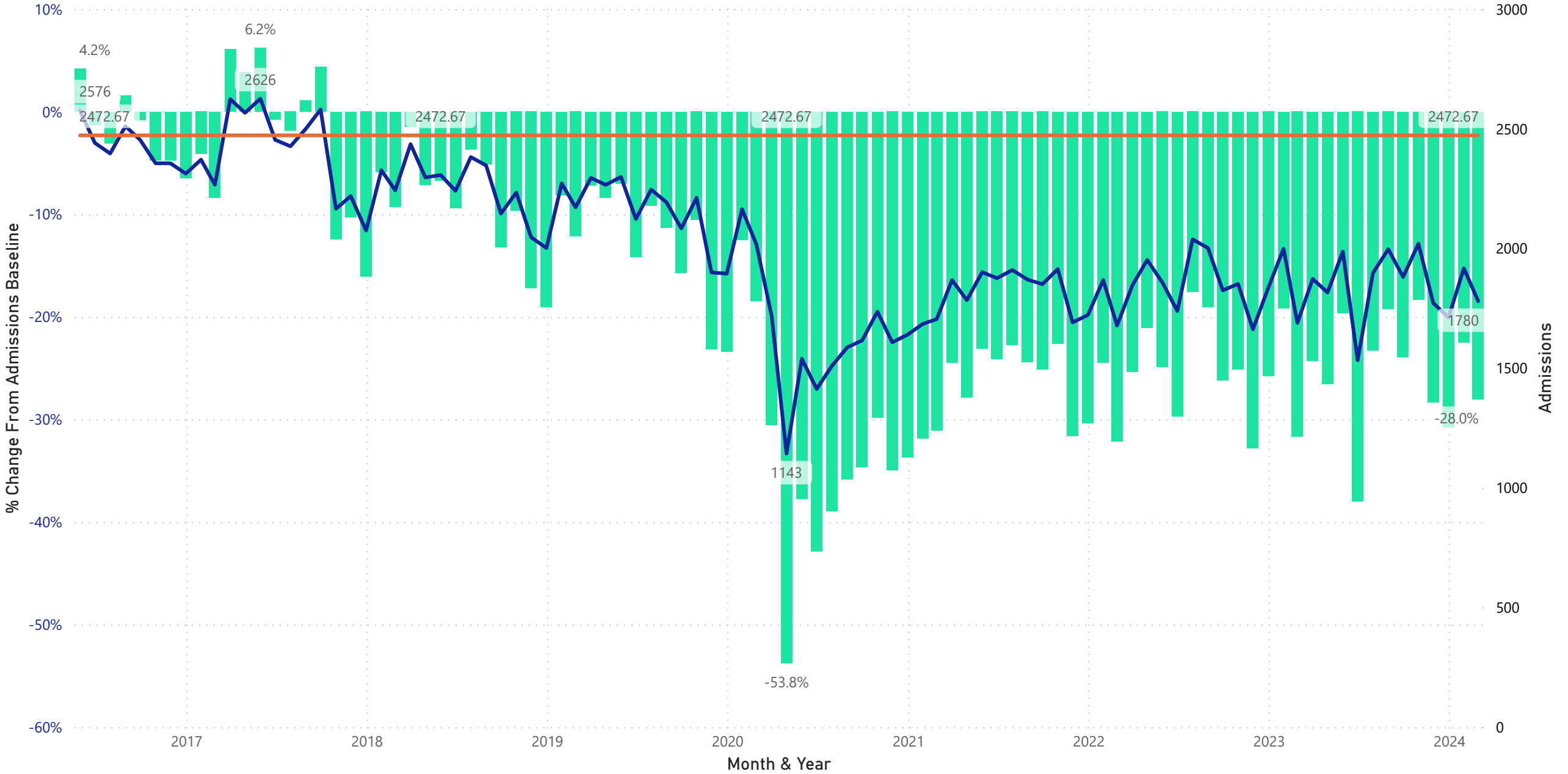
● Black ● White ● LatinX



Note: since we do not have population data between January 1, 2021 and June 30, 2023, the RRI after December 31, 2020 should be considered an estimate. The adult population by race ethnicity for Palm Beach County was obtained from the following. [Source:](#) Puzzanchera, C., Sladky, A. and Kang, W. "Easy Access to Juvenile Populations: 2016-2020." Online.

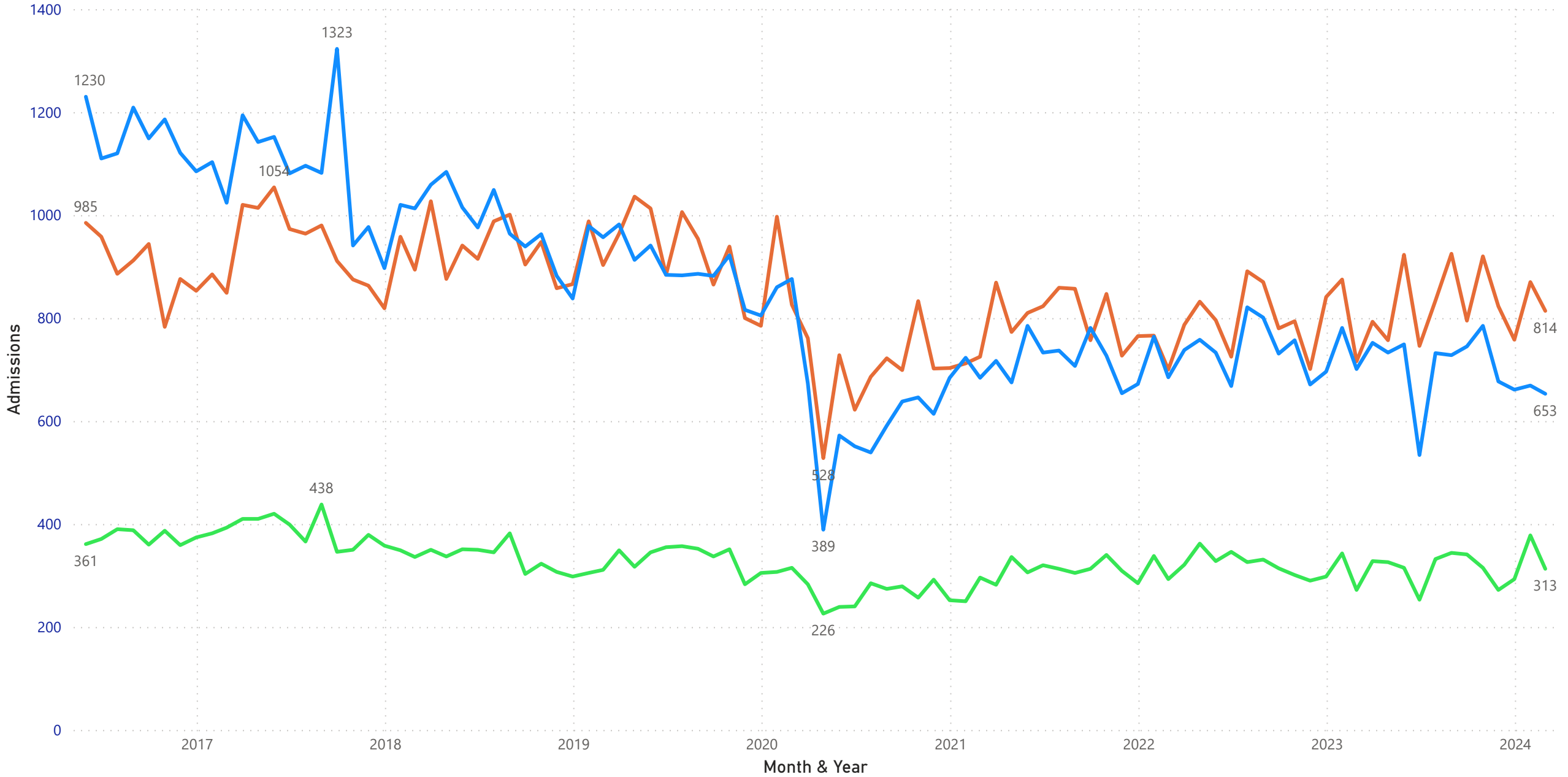
Confined Admissions

● % Change From Admissions Baseline ● Admissions ● Admissions Baseline (2473)



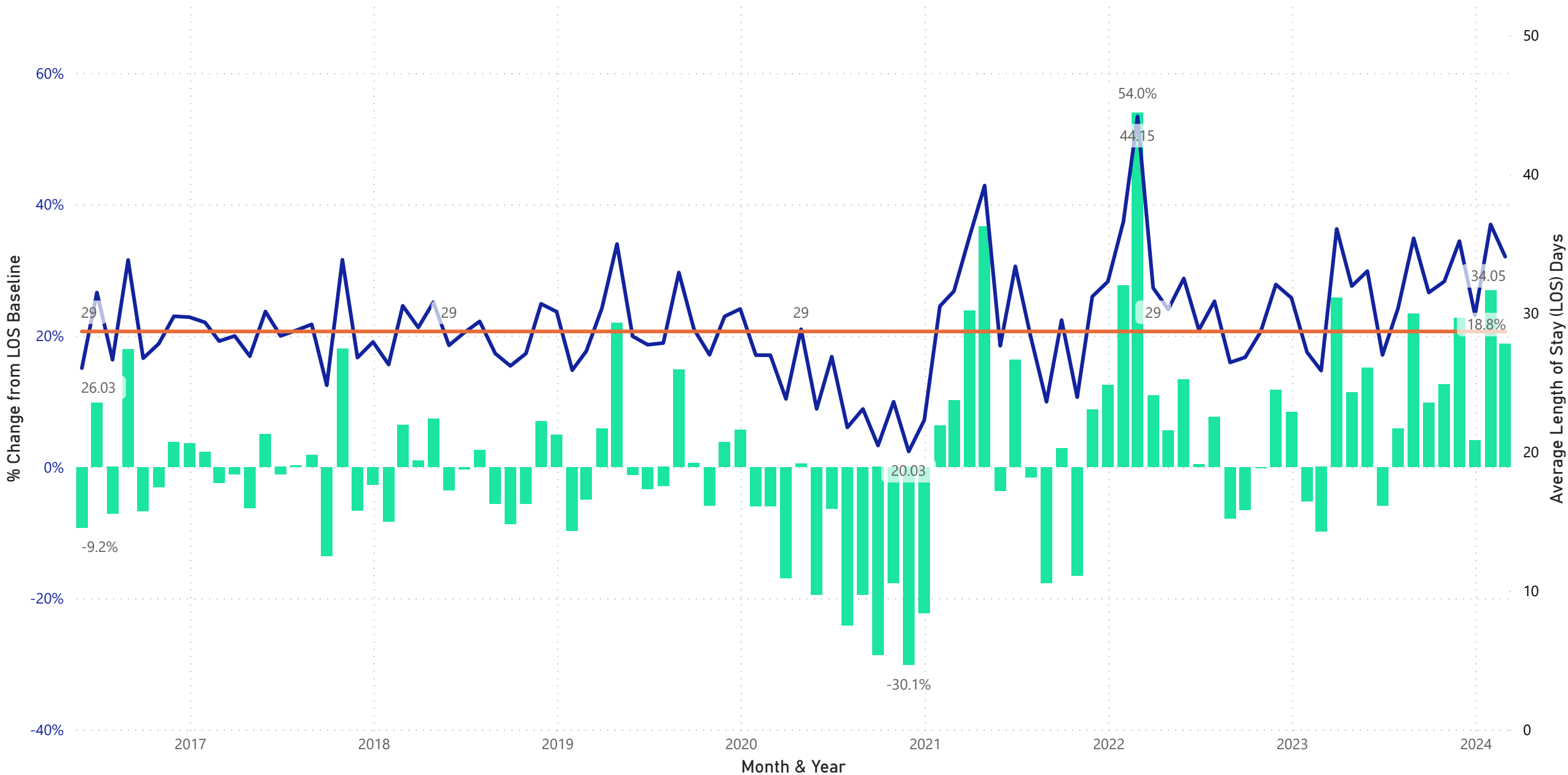
Confined Admissions by Race & Ethnicity

● Black ● White ● LatinX



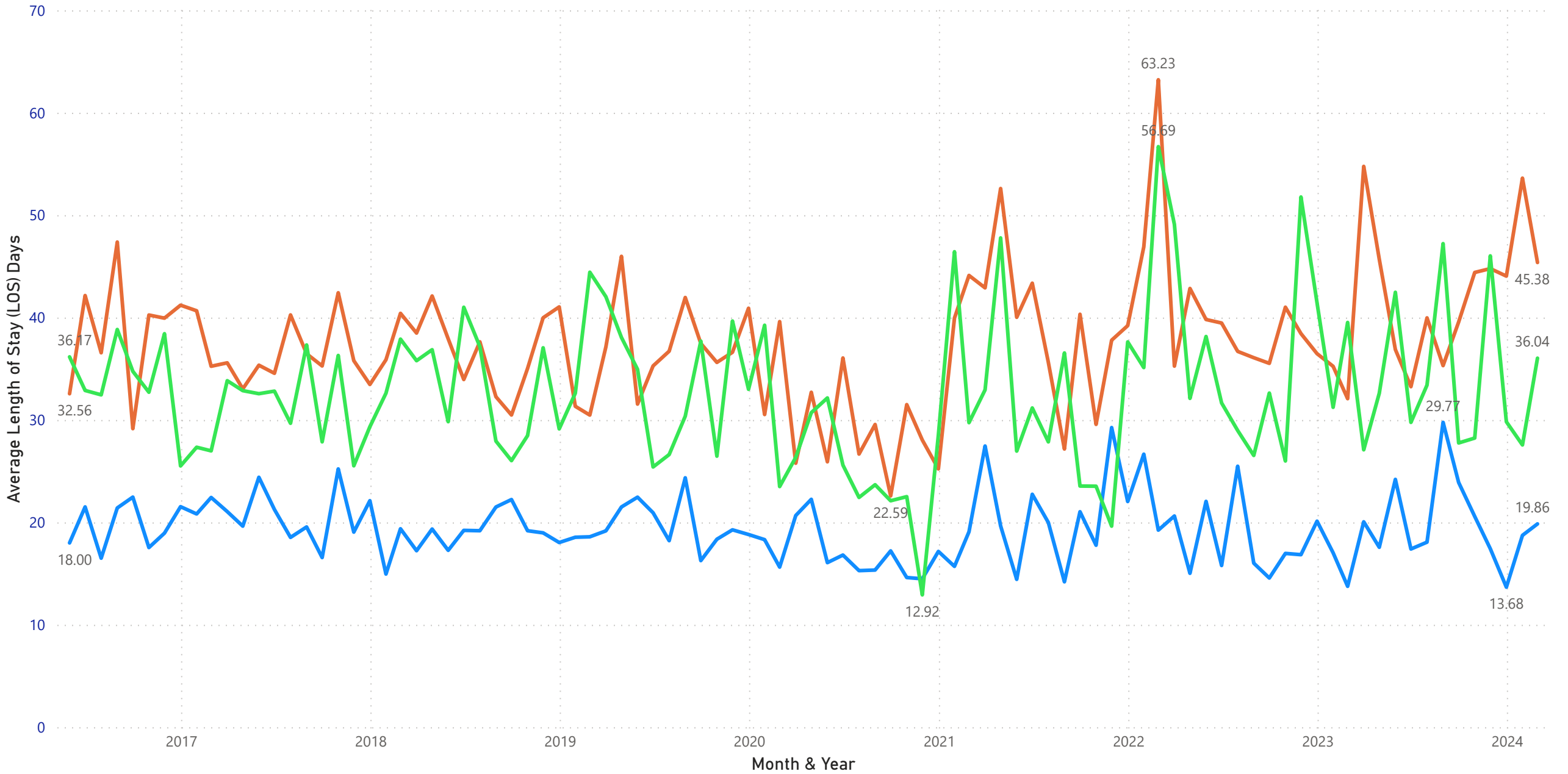
Confined Average Length of Stay (LOS) Days

● % Change From LOS Baseline ● Average Length of Stay (LOS) ● LOS_Baseline (28.67)



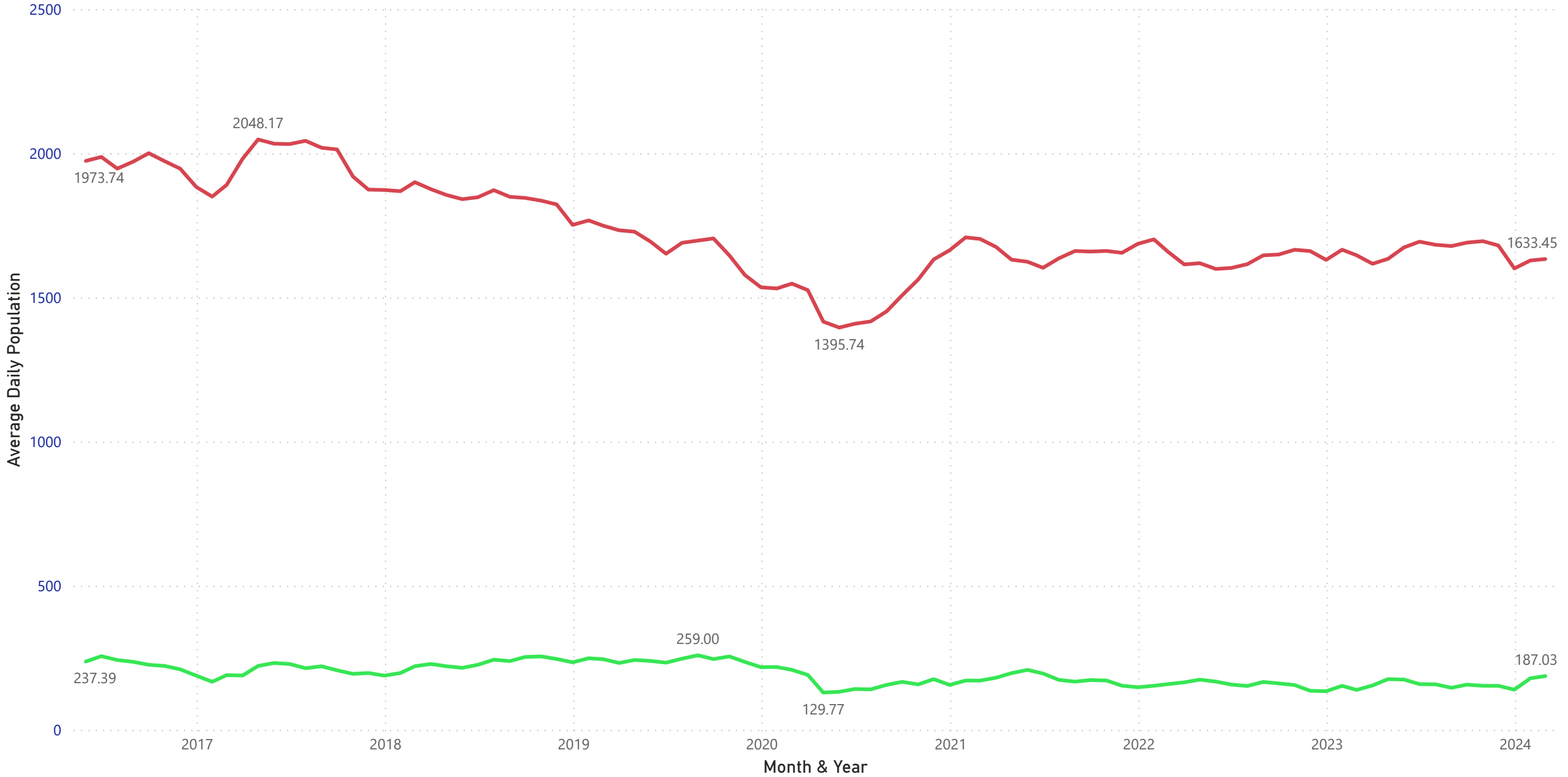
Confined Average Length of Stay (LOS) by Race & Ethnicity

● Black ● White ● LatinX



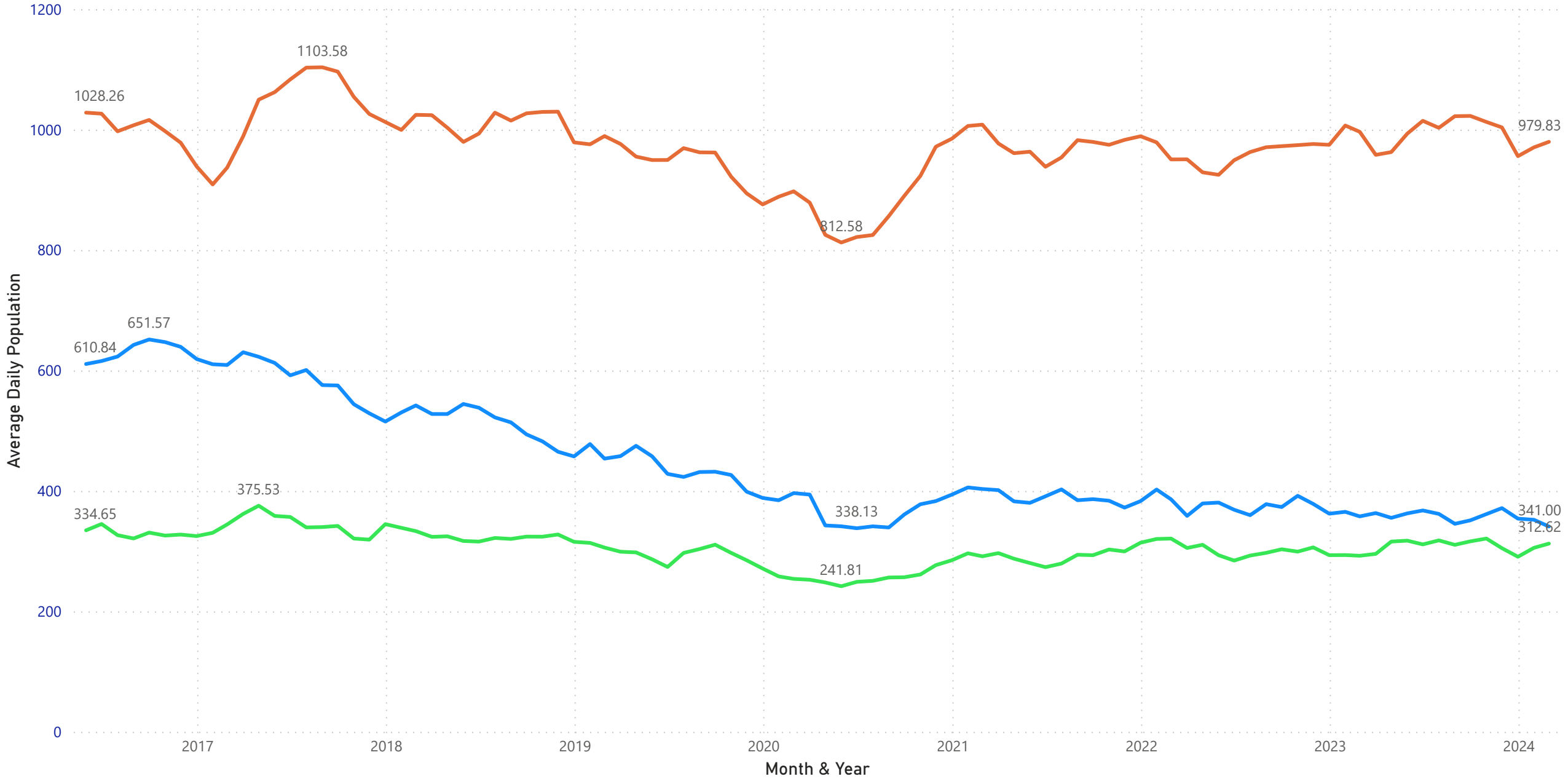
Confined Average Daily Population (ADP) by Felony & Misdemeanor

Felony Misdemeanor



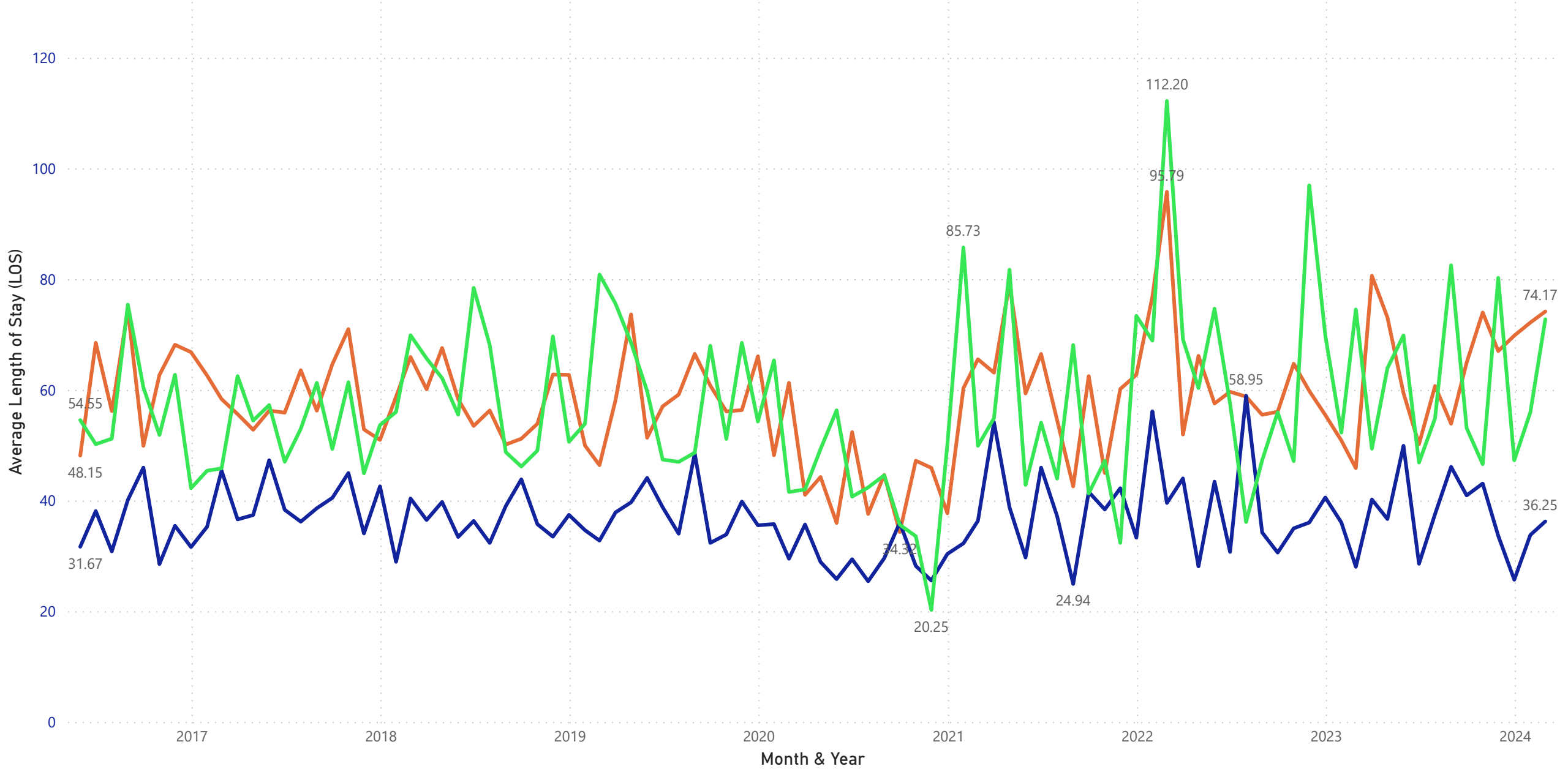
Felony - Confined Average Daily Population (ADP) by Race & Ethnicity

● Black ● White ● LatinX



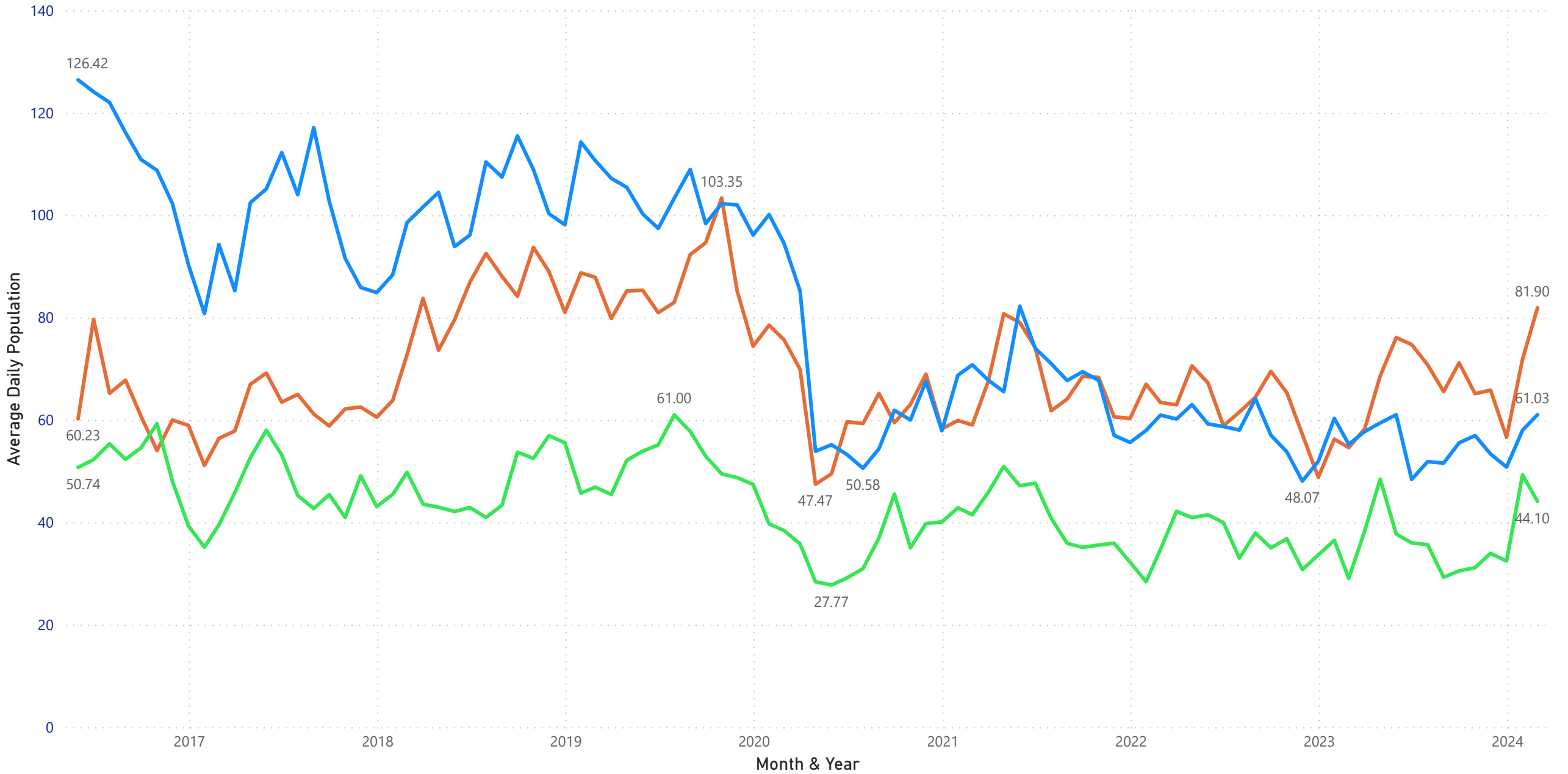
Felony - Confined Average LOS by Race & Ethnicity

● Black ● White ● LatinX



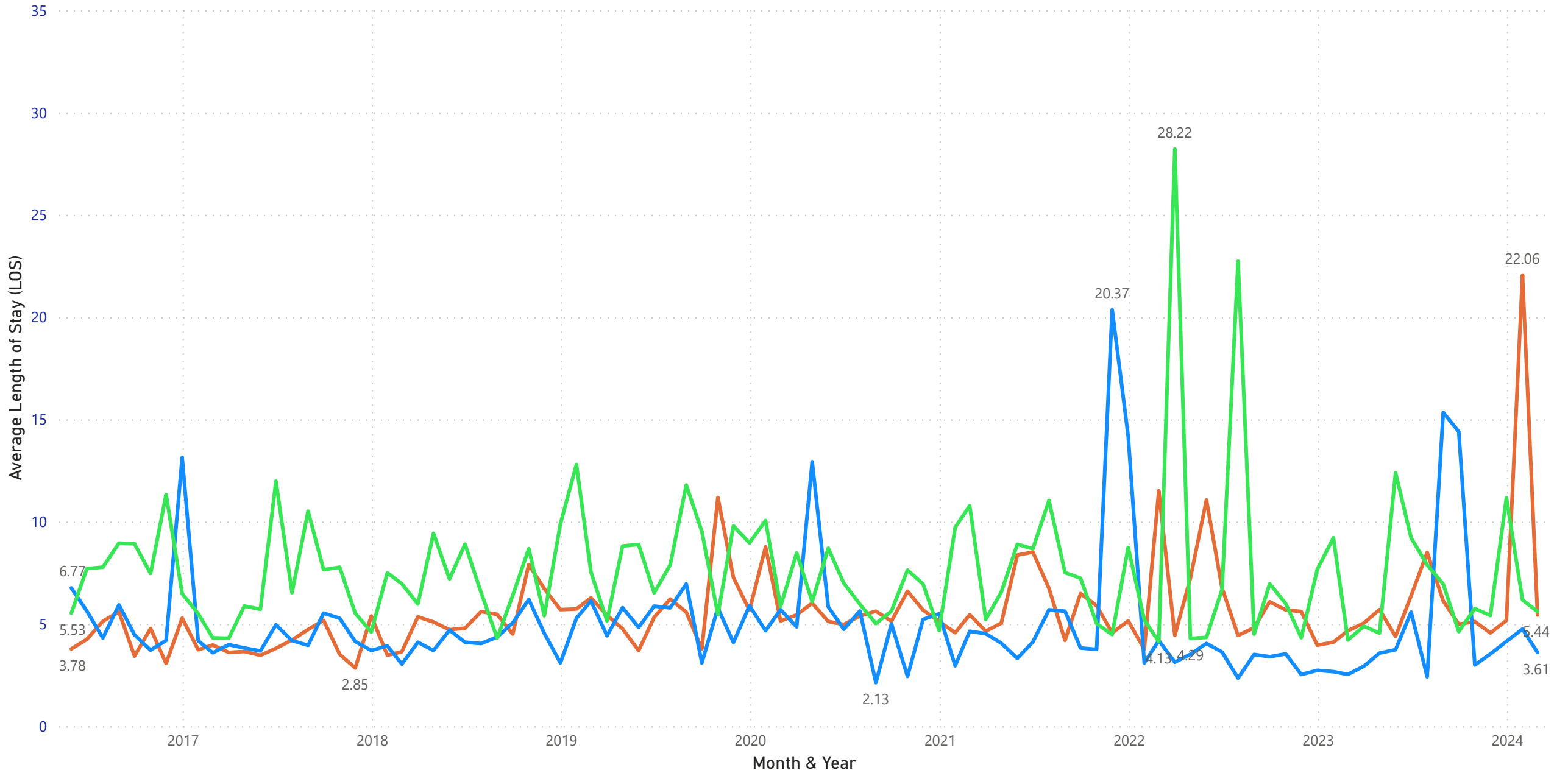
Misdemeanor - Confined Average Daily Population (ADP) by Race & Ethnicity

● Black ● White ● LatinX



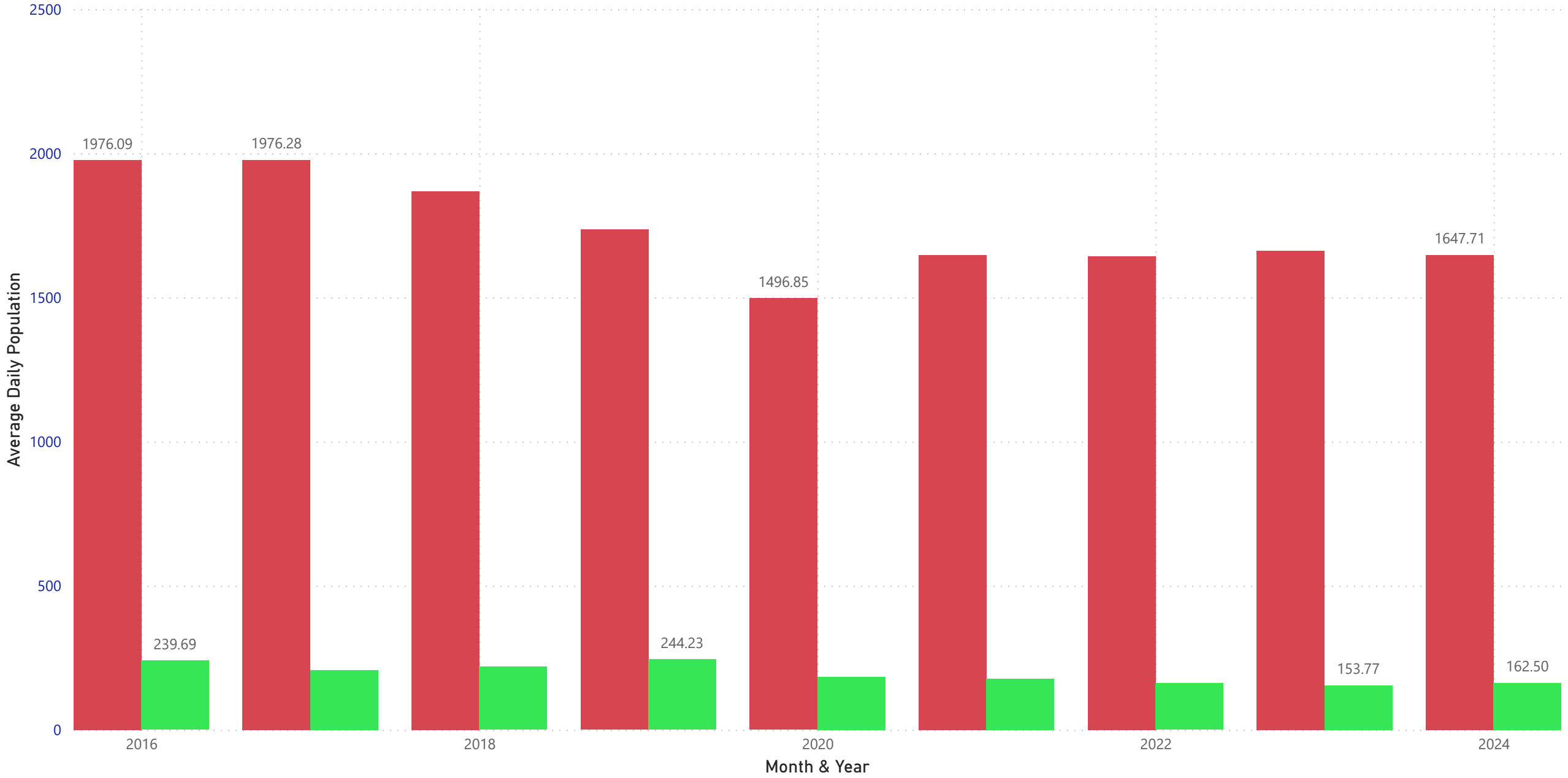
Misdemeanor - Confined Average LOS by Race & Ethnicity

● Black ● White ● LatinX



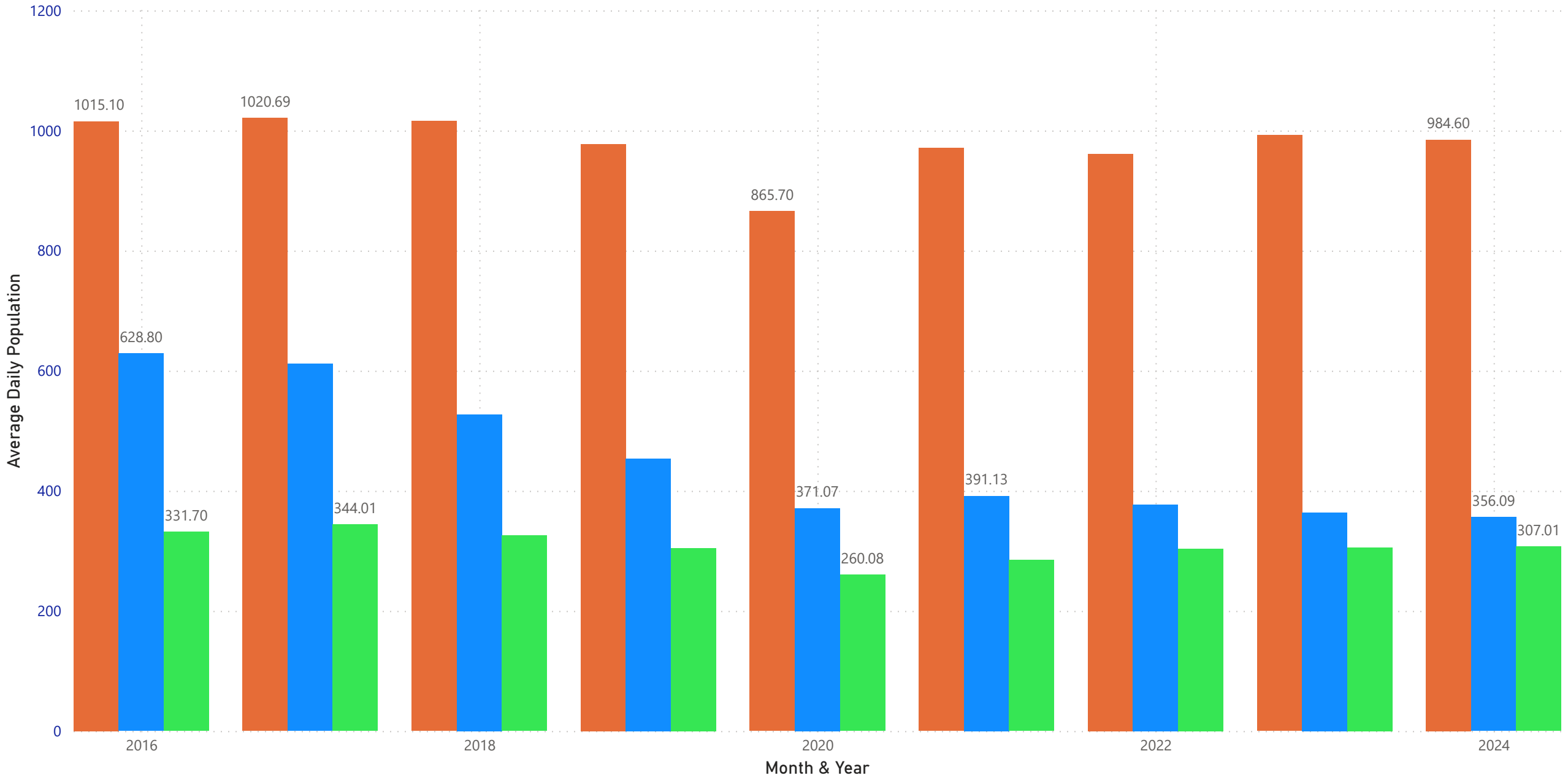
Confined Average Daily Population (ADP) by Felony & Misdemeanor

Felony Misdemeanor



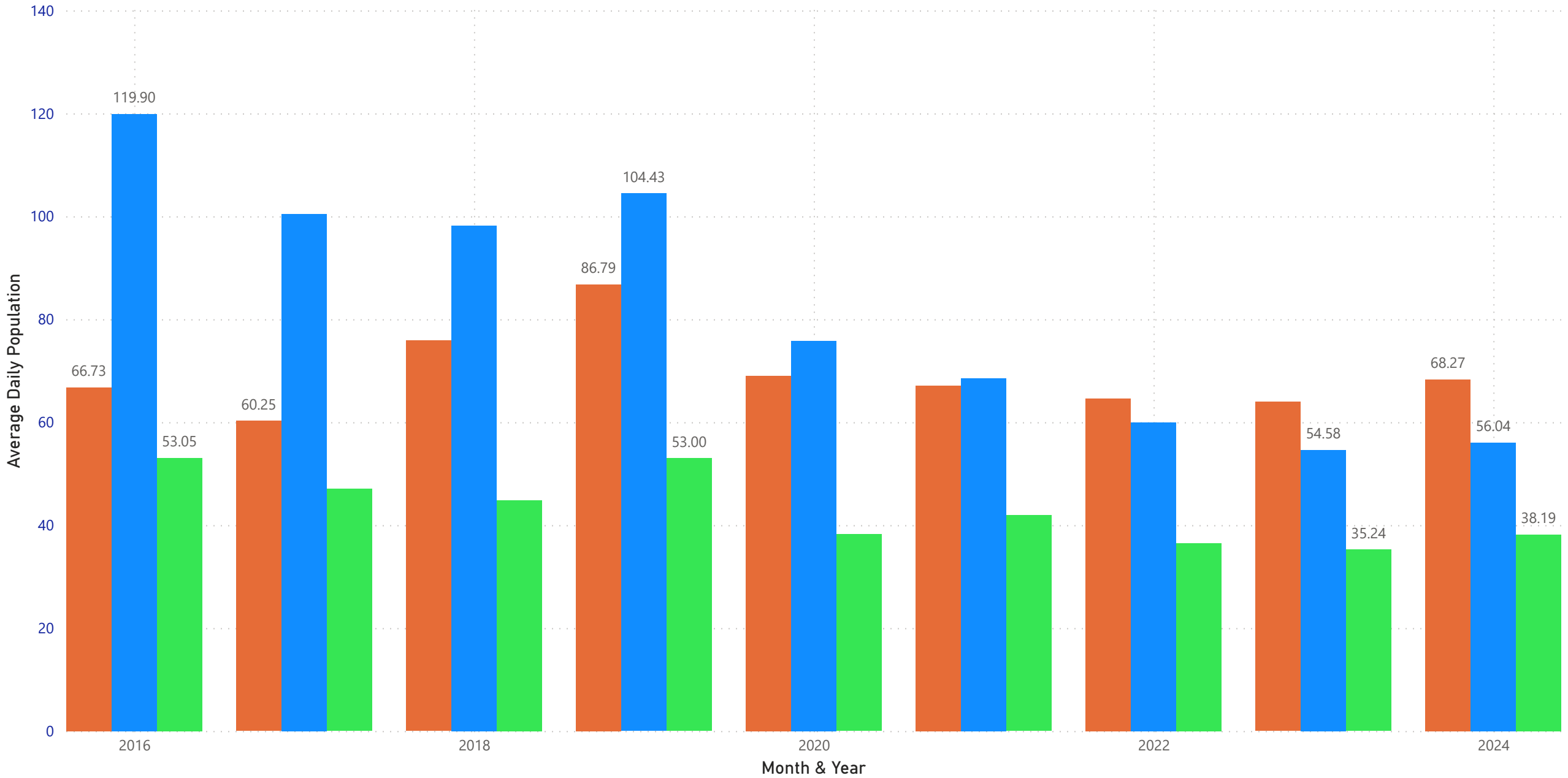
Felony - Confined Average Daily Population (ADP) by Race & Ethnicity

● Black ● White ● LatinX



Misdemeanor - Confined Average Daily Population (ADP) by Race & Ethnicity

● Black ● White ● LatinX



* Our data quality improves when it sees the light of day. Your feedback and questions are always welcome. If you want to contribute please contact us below. Thank you.

Damir Kukec, Research and Planning Manager
dkukec@pbcgov.org

561.355.1639



Supported by the John D. and Catherine T. MacArthur Foundation

