



Financially Assisted Agencies (FAA) Annual Report FY17

Mission Statement

To promote independence and enhance the quality of life in Palm Beach County by providing effective and essential services to residents in need.

Department Director

James Green

Assistant Department Director

Taruna Malhotra

Community Services Department

May 2018

Document prepared by:

Stessy Cocerez

Planner I

&

Meghan Parnell

Manager, Planning and Evaluation

If you have questions or concerns, please contact:

Stessy Cocerez

at

Community Services Department

810 Datura Street

West Palm Beach, FL 33401

Phone:

561-355-4718

Email:

SCocerez@pbcgov.org

Reported posted online at:

<http://discover.pbcgov.org/communityservices/financiallyassisted/Pages/Documents.aspx>

Table of Contents

	<u>Page #</u>
FAA Agency Alphabetical Reference	5
Executive Summary	7
FAA Organizational Chart	8
FAA Summary	9
Behavioral Health	10
Drug Abuse Foundation – Adult Residential Services	11
Drug Abuse Foundation – Medical Detox	12
Drug Abuse Treatment Association – Adolescent Residential Treatment.....	13
Drug Abuse Treatment Association – Non-Residential Services	14
Father Flanagan's Boystown – Children’s Behavioral Health Collaborative	15
For the Children – Children Community Wellness	16
Gratitude House – Lakeside House	17
Gratitude House – Residential Treatment Program	18
Housing Partnership – Supportive Housing Program.....	19
Jeff Industries – Job Placement Program.....	20
Jeff Industries – Let’s Go to Work.....	21
Jerome Golden Center – Glades Adult Crisis Stabilization	22
Jerome Golden Center – Glades Adult Detox Services.....	23
Jerome Golden Center – Glades Child Crisis Stabilization	24
Jerome Golden Center – Inpatient Psychiatric Services.....	25
Jerome Golden Center – Mobile Crisis Team	26
Mental Health Association – Breaking Barriers for Behavioral Health	27
South County Mental Health – Crisis Stabilization Unit.....	28
South County Mental Health – Intake and Evaluation and Mobile Crisis Team	29
South County Mental Health – Psychiatric & Medical Services	30
Special Needs/Developmental Disabilities	31
Coalition for Independent Living Options (CILO) – ALERT.....	32
Coalition for Independent Living Options (CILO) – SAIL	33
Easter Seals – Early Intervention and Advocacy	34
Gulfstream Goodwill Industries – Client Assistance & Advocacy Program	35
Gulfstream Goodwill Industries – Resource Connection and Community Education	36
Legal Aid Society – Guardian Advocacy Project	37
Palm Beach Habilitation Center – Computer Training Program	38
Palm Beach Habilitation Center – Seniors in Transition and Retirement Services (STARS).....	39
Seagull Industries – Achievement Center	40
The ARC of Palm Beach County – Residential Program	41
The ARC of the Glades – Adult Developmental Services System of Care.....	42
United Community Options – Behavior Focused Respite	43
Domestic Violence/Sheltering	44
Aid to Victims of Domestic Abuse (AVDA) – Casa Vegso	45
Children's Home Society – Nelle Smith Residence for Girls	46
The Children's Place at HomeSafe – Safety Net Program	47
Young Women's Christian Association of Palm Beach County (YWCA) – Harmony House.....	48
Homelessness	49
Adopt-A-Family – Housing Stabilization Program.....	50
Adopt-A-Family – Program Reach	51

Adopt-A-Family – Project SAFE	52
Adopt-A-Family – Traveler's Aid	53
CCMO/Families First – Bridges to Success	54
Children's Home Society – Transitions Home	55
Gulfstream Goodwill Industries – Homeless Residential Employment Services	56
Gulfstream Goodwill Industries – Traveler's Aid	57
Legal Aid Society – Homeless Legal Prevention Project.....	58
Palm Beach Habilitation Center – Supported Employment.....	59
The Lord's Place – Permanent Supportive Housing Programs	60
The Salvation Army – Center of Hope	61
Economic Stability/Poverty	62
Adopt-A-Family – Service Enriched Housing.....	63
CCMO/Families First – Kin Support Project.....	64
El Sol, JNRC – Worker Development Project	65
Farmworker Coordinating Council – Family Preservation & Economic Stabilization	66
Habilitation Center for the Handicapped – Hab Center's Plant Nursery	67
Pathways to Prosperity – CIRCLES Palm Beach County.....	68
The Glade's Initiative – Connecting the Glades	69
The Lord's Place – Café Joshua	70
United Way of Palm Beach County – Volunteer Income Tax Assistance (VITA) Program.....	71
Senior Services	72
211 Palm Beach / Treasure Coast – Elder Crisis Outreach.....	73
Alzheimer's Community Care – Family Nurse Consultant.....	74
Alzheimer's Community Care – Specialized Alzheimer's Adult Day Services.....	75
Gulfstream Goodwill Industries – Assistive Communication Services	76
Palm Beach Habilitation Center – Senior Residential Supports.....	77
Ruth and Norman Rales Jewish Family Services – The Weisman Center for Aging in Place	78
Non-Competitive	79
211 Palm Beach/Treasure Coast and United Way of Palm Beach County – Helpline/Crisis Line	80
Area Agency on Aging – Match Funds	81
Mae Volen Senior Center – Match Funds and Transportation Funds.....	82
Palm Beach County Food Bank – Food Distribution and SNAP Benefits	83
Southeast Florida Behavioral Health Network – Wraparound Services Training	84
United Way of Palm Beach County – Hunger Relief	85

FAA Agency Alphabetical Reference

Agency – Program	Page #
211 Palm Beach/Treasure Coast – Elder Crisis Outreach	73
211 Palm Beach/Treasure Coast and United Way of Palm Beach County – Helpline/Crisis Line	80
Adopt-A-Family – Housing Stabilization Program	50
Adopt-A-Family – Program Reach	51
Adopt-A-Family – Project SAFE	52
Adopt-A-Family – Service Enriched Housing	63
Adopt-A-Family – Traveler's Aid	53
Aid to Victims of Domestic Abuse (AVDA) – Casa Vegso	45
Alzheimer's Community Care – Family Nurse Consultant	74
Alzheimer's Community Care – Specialized Alzheimer's Adult Day Services	75
Area Agency on Aging – Match Funds	81
CCMO/Families First – Bridges to Success	54
CCMO/Families First – Kin Support Project	64
Children's Home Society – Nelle Smith Residence for Girls	46
Children's Home Society – Transitions Home	55
Coalition for Independent Living Options (CILO) – ALERT	32
Coalition for Independent Living Options (CILO) – SAIL	33
Drug Abuse Foundation (DAF) – Adult Residential Services	11
Drug Abuse Foundation (DAF) – Medical Detox	12
Drug Abuse Treatment Association (DATA) – Adolescent Residential Treatment	13
Drug Abuse Treatment Association (DATA) – Non-Residential Services	14
Easter Seals – Early Intervention & Advocacy	34
El Sol, JNRC – Worker Development Project	65
Farmworker's Coordinating Council – Family Preservation & Economic Stabilization	66
Father Flanagan's Boystown – Children's Behavioral Health Collaborative	15
For the Children – Children Community Wellness	16
Gratitude House – Lakeside House	17
Gratitude House – Residential Treatment Program	18
Gulfstream Goodwill Industries – Assistive Communication Services	76
Gulfstream Goodwill Industries – Client Assistance and Advocacy	35
Gulfstream Goodwill Industries – Homeless Residential Employment Services	56
Gulfstream Goodwill Industries – Resource Connection and Community Education	36
Gulfstream Goodwill Industries – Traveler's Aid	57
Habilitation Center for the Handicapped – Hab Center's Plant Nursery	67
Housing Partnership – Supportive Housing Program	19
Jeff Industries – Job Placement Program	20
Jeff Industries – Let's Go to Work	21
Jerome Golden Center – Glades Adult Crisis Stabilization	22
Jerome Golden Center – Glades Adult Detox Services	23
Jerome Golden Center – Glades Child Crisis Stabilization	24
Jerome Golden Center – Inpatient Psychiatric Services	25
Jerome Golden Center – Mobile Crisis Team	26

FAA Agency Alphabetical Reference Continues on next page

Legal Aid Society – Guardian Advocacy Project	37
Legal Aid Society – Homeless Legal Prevention Project	58
Mae Volen Senior Center – Match Funds and Transportation Funds	82
Mental Health Association – Breaking Barriers for Behavioral Health	27
Palm Beach County Food Bank – Food Distribution and SNAP Outreach	83
Palm Beach Habilitation Center – Computer Training Program	38
Palm Beach Habilitation Center – Senior Residential Supports	77
Palm Beach Habilitation Center – Seniors in Transition and Retirement Services (STARS)	39
Palm Beach Habilitation Center – Supported Employment	59
Pathways to Prosperity – CIRCLES Palm Beach County	68
Ruth and Norman Rales Jewish Family Services – The Weisman Center Aging in Place Program	78
Seagull Industries – Achievement Center	40
South County Mental Health – Crisis Stabilization Unit	28
South County Mental Health – Intake and Evaluation and Mobile Crisis Team	29
South County Mental Health – Psychiatric and Medical Services	30
Southeast Florida Behavioral Health Network (SEFBHN) - Wraparound Services Training	84
The ARC of Palm Beach County – Residential Program	41
The ARC of the Glades – Adult Developmental Services System of Care	42
The Children's Place at HomeSafe – Safety Net Program	47
The Glade's Initiative – Connecting the Glades	69
The Lord's Place – Café Joshua	70
The Lord's Place – Permanent Supportive Housing Programs	60
The Salvation Army – Center of Hope	61
United Community Options – Behavior Focused Respite	43
United Way of Palm Beach County – Hunger Relief	85
United Way of Palm Beach County – Volunteer Income Tax Assistance (VITA) Program	71
Young Women's Christian Association of Palm Beach County (YWCA) – Harmony House	48

Executive Summary

Since the early 1980s, Palm Beach County has provided additional financial assistance to community-based organizations providing health and human services through the Financially Assisted Agencies (FAA) program. This program is within the Administrative section of the Community Services Department.

The Palm Beach County Citizens Advisory Committee on Health and Human Services (CAC), through Resolution R2013-1563, is charged to assist the Palm Beach County Board of County Commissioners in the assessment of need, planning, implementation and evaluation of the Health and Human Services System of Care as defined in the Health and Human Services Element of the Palm Beach County Comprehensive Plan.

The HHS Element defines the System of Care as follows:

System of Care is defined as a comprehensive spectrum of behavioral health, social services, medical services and other necessary services organized into a coordinated network to meet the multiple, complex and changing needs of children, adults and seniors.

The System of Care encompasses the scope and delivery of services. The core values of the System of Care are: (1) the service delivery system is driven by the needs of the clients; (2) the services are community based, and delivered in the least restrictive environment; and (3) the services are culturally competent.

The System of Care includes the provision of a full array of services provided to meet the needs of the individual client. The client and other interested parties are included in the development of the service delivery system and collaborative systems.

Finally, the System of Care provides early identification and intervention programs and services, and, advocacy for programs and services to meet the needs of children, adults and seniors.

Through a competitive procurement process, the Board of County Commissioners approved FAA funding for the Fiscal Year 2017, from October 1, 2016 through September 30, 2017. Forty (40) agencies, operating sixty-nine (69) programs in seven (7) service categories including Behavioral Health, Special Needs and Developmental Disabilities, Economic Stability and Poverty, Senior Services, Domestic Abuse and Sheltering, Homelessness, and Non-Competitive. The funding cycle is for three years. Additional programs were identified to receive FAA funding on a non-competitive basis.

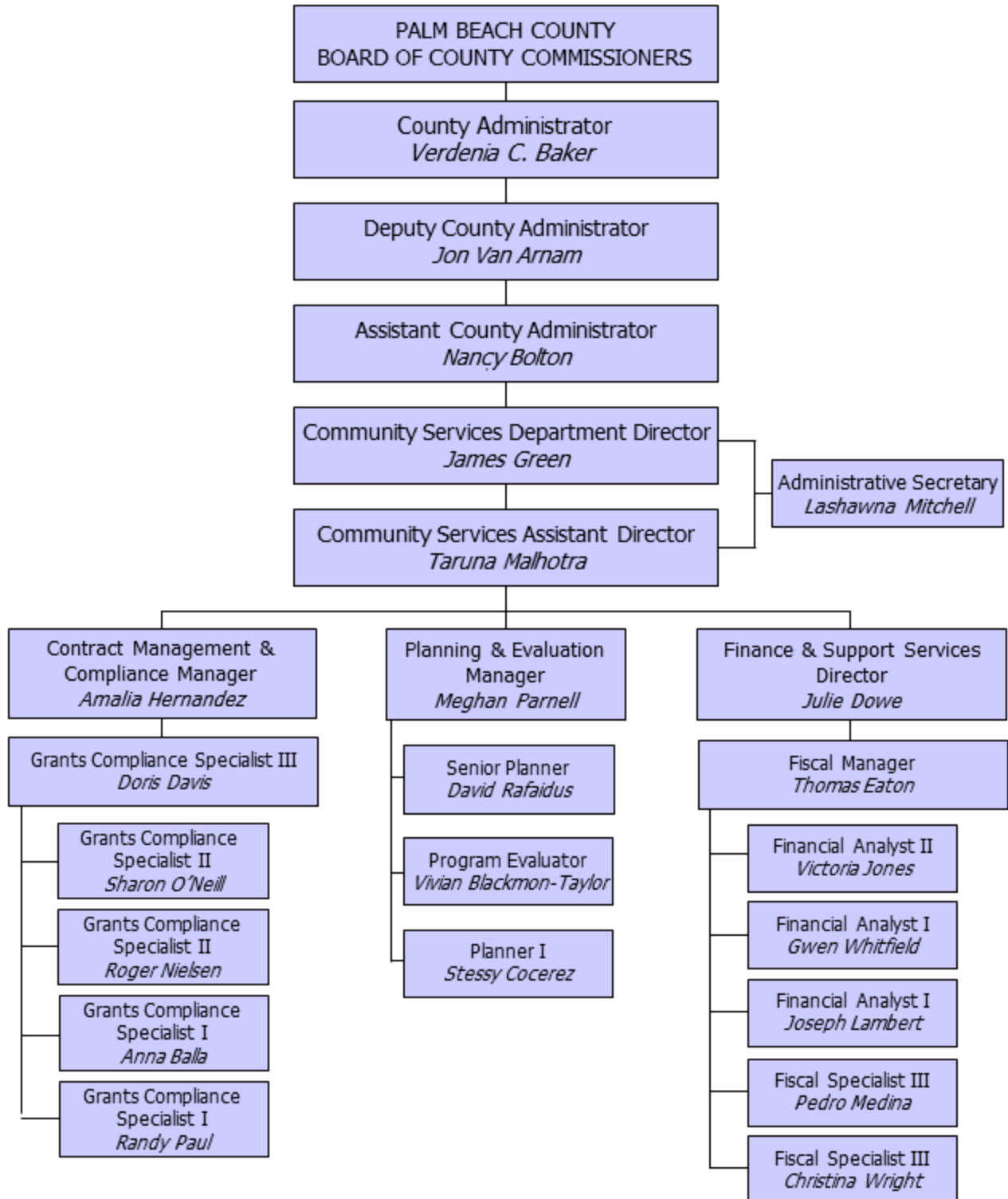
FY17 is the second year the FAA program has been able to issue a report with this level of detail. In FY17, demographic and outcome data was collected and reported on individually by client.

The report is comprehensive and provides performance data in areas such as finance, utilization, program outcome, and client demographic data. The information is provided by program, service category, and overall for FAA.

The program reports are organized by service category and programs are listed in alphabetical order. The FAA Agency Alphabetical List on pages 5 and 6 lists the agencies alphabetically for ease in finding a specific program across multiple funding categories.

Please note that the demographic data is unduplicated by program. In a few cases where programs served a client more than once within the contract year, the number of clients served will be more than the total count in the demographic table.

**Department of Community Services
Financially Assisted Agency Program (FAA)
ORGANIZATIONAL CHART**



Financially Assisted Agencies

Overall Summary

Funding Amount Awarded:	\$11,990,468.00
Funding Amount Expended:	\$11,822,746.59

Number to be Served:	26,701
Actual Number Served:	24,939*

Program Description

The Board of County Commissioners approved FAA funding for FY17, from October 1, 2016 through September 30, 2017. Forty (40) agencies were funded. They operated sixty-nine (69) programs in seven (7) service categories including Behavioral Health, Special Needs and Developmental Disabilities, Economic Stability and Poverty, Senior Services, Domestic Abuse and Sheltering, Homelessness, and Non-Competitive.

Program Participant Demographic Data

Category	Characteristic	#	%	Category	Characteristic	#	%
Gender	Female	6677	53.45%	Age	17 and under	1635	13.09%
	Male	5810	46.51%		18 to 30	2198	17.60%
	Unknown	5	0.04%		31 to 45	2708	21.68%
	TOTAL:	12492	100.00%		46 to 64	2524	20.20%
Veteran	Yes	380	3.04%		65 and over	3192	25.55%
	No	9038	72.35%		Unknown	235	1.88%
	Unknown	3074	24.61%		TOTAL:	12492	100.00%
	TOTAL:	12492	100.00%	Housing Arrangement	Homeless	910	7.28%
Race	White	5278	42.25%		Dependent Living	2610	20.89%
	Black	3125	25.02%		Foster Care	114	0.91%
	American Indian	14	0.11%		Independent Living	4841	38.75%
	Asian Pacific Islander	53	0.42%		In An Institution	62	0.50%
	Alaskan	0	0.00%		Supportive Independent Living	400	3.20%
	Other	4022	32.20%		Unknown	3555	28.46%
	TOTAL:	12492	100.00%		TOTAL:	12492	100.00%

* Of the 24,939 participants reported to be served, 12,492 submitted demographic information.

Behavioral Health

Overall Summary

Funding Amount Awarded:	\$5,481,408.00
Funding Amount Expended:	\$5,425,019.26

Number to be Served:	14,720
Actual Number Served:	8,511*

Agencies:	10
Programs:	20

Program Description

Programs in this service category address various services for acute care, adults, and youth. Services include mobile crisis, crisis stabilization, medical detox, social detox, crisis planning, recovery supports, pre and post case management, supported housing, supported employment, peer support (mentors/drop-in centers), psychosocial rehabilitation, family psych-education, co-occurring illness management, prevention and intervention, advocacy and outreach, and more.

Program Participant Demographic Data

Category	Characteristic	#	%	Category	Characteristic	#	%
Gender	Female	2918	43.88%	Age	17 and under	1485	22.33%
	Male	3731	56.11%		18 to 30	1525	22.93%
	Unknown	1	0.02%		31 to 45	1723	25.91%
	TOTAL:	6650	100.00%		46 to 64	1514	22.77%
Veteran	Yes	79	1.19%		65 and over	176	2.65%
	No	6433	96.74%		Unknown	227	3.41%
	Unknown	138	2.08%		TOTAL:	6650	100.00%
	TOTAL:	6650	100.00%		Housing Arrangement	Homeless	644
Race	White	3736	56.18%	Dependent Living		1534	23.07%
	Black	1738	26.14%	Foster Care		81	1.22%
	American Indian	2	0.03%	Independent Living		2580	38.80%
	Asian Pacific Islander	30	0.45%	In An Institution		41	0.62%
	Alaskan	0	0.00%	Supportive Independent Living		82	1.23%
	Other	1144	17.20%	Unknown		1688	25.38%
	TOTAL:	6650	100.00%	TOTAL:		6650	100.00%

* Of the 8,511 participants reported to be served, 6,650 submitted demographic information.

Drug Abuse Foundation

Adult Residential Services

Funding Amount Awarded:	\$378,627.00
Funding Amount Expended:	\$378,582.26

Number to be Served:	350
Actual Number Served:	363

Program Description

Program serves males/females 18 and older who are in need of acute residential substance abuse services, and do not require emergency medical stabilization services.

Outcome Indicator

61% or 214 of 350 adults will successfully complete substance abuse treatment services.

Actual Outcome Percentage Achieved

65.07%

Program Participant Demographic Data

Category	Characteristic	#	%	Category	Characteristic	#	%
Gender	Female	128	35.26%	Age	17 and under	0	0.00%
	Male	235	64.74%		18 to 30	92	25.34%
	Unknown	0	0.00%		31 to 45	158	43.53%
	TOTAL:	363	100.00%		46 to 64	107	29.48%
Veteran	Yes	4	1.10%		65 and over	6	1.65%
	No	351	96.69%		Unknown	0	0.00%
	Unknown	8	2.20%		TOTAL:	363	100.00%
	TOTAL:	363	100.00%	Housing Arrangement	Homeless	130	35.81%
Race	White	277	76.31%		Dependent Living	135	37.19%
	Black	65	17.91%		Foster Care	0	0.00%
	American Indian	0	0.00%		Independent Living	80	22.04%
	Asian Pacific Islander	0	0.00%		In An Institution	6	1.65%
	Alaskan	0	0.00%		Supportive Independent Living	0	0.00%
	Other	21	5.79%		Unknown	12	3.31%
	TOTAL:	363	100.00%		TOTAL:	363	100.00%

Drug Abuse Foundation

Medical Detox

Funding Amount Awarded:	\$715,015.00
Funding Amount Expended:	\$714,821.61

Number to be Served:	1200
Actual Number Served:	886

Program Description

Program serves individuals, ages 17 and older, who are under the influence of drug/alcohol, in acute distress and/or demonstrating withdrawal symptoms and are in need of Detox Services.

Outcome Indicator

60% or 720 of 1200 adults will successfully complete substance abuse treatment services.

Actual Outcome Percentage Achieved

71.67%

Program Participant Demographic Data

Category	Characteristic	#	%	Category	Characteristic	#	%
Gender	Female	287	32.39%	Age	17 and under	1	0.11%
	Male	599	67.61%		18 to 30	286	32.28%
	Unknown	0	0.00%		31 to 45	385	43.45%
	TOTAL:	886	100.00%		46 to 64	203	22.91%
Veteran	Yes	12	1.35%		65 and over	11	1.24%
	No	849	95.82%		Unknown	0	0.00%
	Unknown	25	2.82%		TOTAL:	886	100.00%
	TOTAL:	886	100.00%	Housing Arrangement	Homeless	276	31.15%
Race	White	715	80.70%		Dependent Living	0	0.00%
	Black	88	9.93%		Foster Care	0	0.00%
	American Indian	0	0.00%		Independent Living	545	61.51%
	Asian Pacific Islander	0	0.00%		In An Institution	0	0.00%
	Alaskan	0	0.00%		Supportive Independent Living	19	2.14%
	Other	83	9.37%		Unknown	46	5.19%
	TOTAL:	886	100.00%		TOTAL:	886	100.00%

Drug Abuse Treatment Association

Adolescent Residential Treatment

Funding Amount Awarded:	\$113,118.00
Funding Amount Expended:	\$109,506.04

Number to be Served:	45
Actual Number Served:	62

Program Description

Program is designed to reduce substance abuse by providing the core service of residential programming for substance abusing adolescents in Palm Beach County. The primary components of this program are the on-site school, the therapeutic / counseling services, and the structured behavioral milieu.

Outcome Indicator

48% or 22 of 45 children will successfully complete substance abuse treatment.

Actual Outcome Percentage Achieved

46.15%

Program Participant Demographic Data

Category	Characteristic	#	%	Category	Characteristic	#	%
Gender	Female	13	20.97%	Age	17 and under	48	77.42%
	Male	49	79.03%		18 to 30	14	22.58%
	Unknown	0	0.00%		31 to 45	0	0.00%
	TOTAL:	62	100.00%		46 to 64	0	0.00%
Veteran	Yes	0	0.00%		65 and over	0	0.00%
	No	62	100.00%		Unknown	0	0.00%
	Unknown	0	0.00%		TOTAL:	62	100.00%
	TOTAL:	62	100.00%		Housing Arrangement	Homeless	0
Race	White	24	38.71%	Dependent Living		62	100.00%
	Black	21	33.87%	Foster Care		0	0.00%
	American Indian	0	0.00%	Independent Living		0	0.00%
	Asian Pacific Islander	0	0.00%	In An Institution		0	0.00%
	Alaskan	0	0.00%	Supportive Independent Living		0	0.00%
	Other	17	27.42%	Unknown		0	0.00%
	TOTAL:	62	100.00%	TOTAL:		62	100.00%

Program Highlights

We received an influx of referrals for youth with significant mental health and behavioral issues. This facilitated multiple placements into higher levels of care, which are recorded as unsuccessful completions. In response, we implemented additional evidence-based programs addressing trauma and life skills and contracted an adolescent psychiatrist, resulting in increased success.

Drug Abuse Treatment Association

Non-Residential Services

Funding Amount Awarded:	\$152,990.00
Funding Amount Expended:	\$152,990.00

Number to be Served:	450
Actual Number Served:	571

Program Description

Program is designed to reduce substance abuse by providing the core service of outpatient and non-residential programming for substance abusing adolescents in Palm Beach County. Services are provided in a traditional outpatient setting as well as in middle and high schools throughout Palm Beach County.

Outcome Indicator

48% or 216 of 450 children will successfully complete substance abuse treatment as indicated by meeting at least 85% of their Intervention Plan goals and objectives.

Actual Outcome Percentage Achieved

94.27%

Program Participant Demographic Data

Category	Characteristic	#	%	Category	Characteristic	#	%
Gender	Female	306	53.59%	Age	17 and under	497	87.04%
	Male	265	46.41%		18 to 30	74	12.96%
	Unknown	0	0.00%		31 to 45	0	0.00%
	TOTAL:	571	100.00%		46 to 64	0	0.00%
Veteran	Yes	0	0.00%		65 and over	0	0.00%
	No	571	100.00%		Unknown	0	0.00%
	Unknown	0	0.00%		TOTAL:	571	100.00%
	TOTAL:	571	100.00%	Housing Arrangement	Homeless	0	0.00%
Race	White	250	43.78%		Dependent Living	571	100.00%
	Black	228	39.93%		Foster Care	0	0.00%
	American Indian	0	0.00%		Independent Living	0	0.00%
	Asian Pacific Islander	0	0.00%		In An Institution	0	0.00%
	Alaskan	0	0.00%		Supportive Independent Living	0	0.00%
	Other	93	16.29%		Unknown	0	0.00%
	TOTAL:	571	100.00%		TOTAL:	571	100.00%

Father Flanagan's Boystown

Children's Behavioral Health Collaborative

Funding Amount Awarded:	\$762,909.00
Funding Amount Expended:	\$733,969.16

Number to be Served:	300
Actual Number Served:	421

Program Description

Program provides coordinated behavioral/mental health services for at-risk and high-risk children and families across Palm Beach County. This is a directed system of comprehensive, family-driven children's behavioral health services that will streamline access to a full spectrum of necessary services.

Outcome Indicator

80% or 240 of 300 children served with emotional disturbance (ED) or at-risk of ED will improve their level of functioning.

Actual Outcome Percentage Achieved

86.40%

Program Participant Demographic Data

Category	Characteristic	#	%	Category	Characteristic	#	%
Gender	Female	163	38.72%	Age	17 and under	409	97.15%
	Male	258	61.28%		18 to 30	12	2.85%
	Unknown	0	0.00%		31 to 45	0	0.00%
	TOTAL:	421	100.00%		46 to 64	0	0.00%
Veteran	Yes	0	0.00%		65 and over	0	0.00%
	No	421	100.00%		Unknown	0	0.00%
	Unknown	0	0.00%		TOTAL:	421	100.00%
	TOTAL:	421	100.00%	Housing Arrangement	Homeless	0	0.00%
Race	White	198	47.03%		Dependent Living	342	81.24%
	Black	113	26.84%		Foster Care	79	18.76%
	American Indian	0	0.00%		Independent Living	0	0.00%
	Asian Pacific Islander	0	0.00%		In An Institution	0	0.00%
	Alaskan	0	0.00%		Supportive Independent Living	0	0.00%
	Other	110	26.13%		Unknown	0	0.00%
	TOTAL:	421	100.00%		TOTAL:	421	100.00%

For The Children

Children Community Wellness

Funding Amount Awarded:	\$245,366.00
Funding Amount Expended:	\$245,366.00

Number to be Served:	50
Actual Number Served:	50

Program Description

Program provides wraparound behavioral health services to the Haitian students living in the 33460 and 33461 zip code (Lake Worth/Lantana). The program has two phases: the prevention phase, which is geared toward education, and the intervention phase, which will address behavioral health issues, such as depression, anxiety and conduct issues.

Outcome Indicator

64% or 32 of 50 children/youth will demonstrate a gain as measured by the CFARs.

Actual Outcome Percentage Achieved

87.18%

Program Participant Demographic Data

Category	Characteristic	#	%	Category	Characteristic	#	%
Gender	Female	16	32.00%	Age	17 and under	48	96.00%
	Male	34	68.00%		18 to 30	2	4.00%
	Other	0	0.00%		31 to 45	0	0.00%
	TOTAL:	50	100.00%		46 to 64	0	0.00%
Veteran	Yes	0	0.00%		65 and over	0	0.00%
	No	0	0.00%		Unknown	0	0.00%
	Unknown	50	100.00%		TOTAL:	50	100.00%
	TOTAL:	50	100.00%	Housing Arrangement	Homeless	0	0.00%
Race	White	0	0.00%		Dependent Living	50	100.00%
	Black	47	94.00%		Foster Care	0	0.00%
	American Indian	0	0.00%		Independent Living	0	0.00%
	Asian Pacific Islander	0	0.00%		In An Institution	0	0.00%
	Alaskan	0	0.00%		Supportive Independent Living	0	0.00%
	Other	3	6.00%		Unknown	0	0.00%
	TOTAL:	50	100.00%		TOTAL:	50	100.00%

Gratitude House

Lakeside House

Funding Amount Awarded:	\$9,318.00
Funding Amount Expended:	\$5,189.55

Number to be Served:	9
Actual Number Served:	3

Program Description

Program encourages residents to continue to benefit from mandatory clinical services with the priority of maintaining their sobriety as they are assisted in obtaining employment and safe, permanent housing.

Outcome Indicator

75% or 7 of 9 women will have a change in their condition as evidenced by becoming employed from time of admission to discharge.

Actual Outcome Percentage Achieved

100.00%

Program Participant Demographic Data

Category	Characteristic	#	%	Category	Characteristic	#	%
Gender	Female	3	100.00%	Age	17 and under	0	0.00%
	Male	0	0.00%		18 to 30	1	33.33%
	Unknown	0	0.00%		31 to 45	2	66.67%
	TOTAL:	3	100.00%		46 to 64	0	0.00%
Veteran	Yes	0	0.00%		65 and over	0	0.00%
	No	3	100.00%		Unknown	0	0.00%
	Unknown	0	0.00%		TOTAL:	3	100.00%
	TOTAL:	3	100.00%	Housing Arrangement	Homeless	0	0.00%
Race	White	3	100.00%		Dependent Living	0	0.00%
	Black	0	0.00%		Foster Care	0	0.00%
	American Indian	0	0.00%		Independent Living	1	33.33%
	Asian Pacific Islander	0	0.00%		In An Institution	0	0.00%
	Alaskan	0	0.00%		Supportive Independent Living	2	66.67%
	Other	0	0.00%		Unknown	0	0.00%
	TOTAL:	3	100.00%		TOTAL:	3	100.00%

Gratitude House

Residential Treatment Program

Funding Amount Awarded:	\$46,589.00
Funding Amount Expended:	\$27,118.64

Number to be Served:	15
Actual Number Served:	4

Program Description

Program is the cornerstone in the clinical continuum of care and it is through this long-term program that clients are provided safe housing in a clinically supervised environment in which they can work to achieve sustainable sobriety.

Outcome Indicator

50% or 8 of 15 clients will be living in a stable housing environment at the time of discharge.

Actual Outcome Percentage Achieved

33.33%

Program Participant Demographic Data

Category	Characteristic	#	%	Category	Characteristic	#	%
Gender	Female	4	100.00%	Age	17 and under	0	0.00%
	Male	0	0.00%		18 to 30	2	50.00%
	Unknown	0	0.00%		31 to 45	1	25.00%
	TOTAL:	4	100.00%		46 to 64	1	25.00%
Veteran	Yes	0	0.00%		65 and over	0	0.00%
	No	4	100.00%		Unknown	0	0.00%
	Unknown	0	0.00%		TOTAL:	4	100.00%
	TOTAL:	4	100.00%		Housing Arrangement	Homeless	0
Race	White	3	75.00%	Dependent Living		0	0.00%
	Black	1	25.00%	Foster Care		0	0.00%
	American Indian	0	0.00%	Independent Living		0	0.00%
	Asian Pacific Islander	0	0.00%	In An Institution		3	75.00%
	Alaskan	0	0.00%	Supportive Independent Living		1	25.00%
	Other	0	0.00%	Unknown		0	0.00%
	TOTAL:	4	100.00%	TOTAL:		4	100.00%

Housing Partnership

Supportive Housing Program

Funding Amount Awarded:	\$71,301.00
Funding Amount Expended:	\$71,301.00

Number to be Served:	80
Actual Number Served:	92

Program Description

Program serves adults with a severe and persistent mental illness who are ready to live independently by helping them identify, secure, and maintain safe and decent independent living situations that best suit their economic circumstances and preferences.

Outcome Indicator

90% or 72 of 80 placed participants will improve skills for gaining and maintaining stable housing.

Actual Outcome Percentage Achieved

81.16%

Program Participant Demographic Data

Category	Characteristic	#	%	Category	Characteristic	#	%
Gender	Female	58	63.04%	Age	17 and under	0	0.00%
	Male	34	36.96%		18 to 30	19	20.65%
	Other	0	0.00%		31 to 45	31	33.70%
	TOTAL:	92	100.00%		46 to 64	39	42.39%
Veteran	Yes	0	0.00%		65 and over	3	3.26%
	No	92	100.00%		Unknown	0	0.00%
	Unknown	0	0.00%		TOTAL:	92	100.00%
	TOTAL:	92	100.00%	Housing Arrangement	Homeless	0	0.00%
Race	White	46	50.00%		Dependent Living	16	17.39%
	Black	36	39.13%		Foster Care	0	0.00%
	American Indian	0	0.00%		Independent Living	76	82.61%
	Asian Pacific Islander	0	0.00%		In An Institution	0	0.00%
	Alaskan	0	0.00%		Supportive Independent Living	0	0.00%
	Other	10	10.87%		Unknown	0	0.00%
	TOTAL:	92	100.00%		TOTAL:	92	100.00%

Program Highlights

An 18-year-old single mother of one was facing homelessness and living with her sister, but could not stay long term due to her sister's lease terms. Client is disabled and was unable to find an affordable apartment on her own. Once client entered the program, she worked with a case manager on saving, and was able to apply for an Extremely Low Income (ELI) unit at one of our apartment complexes. Client was approved and moved in. She acquired donated household furniture for the entire home, is enrolled in school, and her daughter has been linked to daycare services.

Jeff Industries

Job Placement Program

Funding Amount Awarded:	\$25,611.00
Funding Amount Expended:	\$25,611.00

Number to be Served:	14
Actual Number Served:	18

Program Description

Program serves low-income adults with severe and persistent mental illnesses, including those with co-occurring disorders who feel ready or are deemed ready for competitive employment.

Outcome Indicator

42% or 6 of 14 adults with serious mental illness will be competitively employed.

Actual Outcome Percentage Achieved

93.75%

Program Participant Demographic Data

Category	Characteristic	#	%	Category	Characteristic	#	%
Gender	Female	2	11.11%	Age	17 and under	0	0.00%
	Male	16	88.89%		18 to 30	6	33.33%
	Unknown	0	0.00%		31 to 45	7	38.89%
	TOTAL:	18	100.00%		46 to 64	5	27.78%
Veteran	Yes	0	0.00%		65 and over	0	0.00%
	No	18	100.00%		Unknown	0	0.00%
	Unknown	0	0.00%		TOTAL:	18	100.00%
	TOTAL:	18	100.00%		Housing Arrangement	Homeless	0
Race	White	16	88.89%	Dependent Living		4	22.22%
	Black	2	11.11%	Foster Care		0	0.00%
	American Indian	0	0.00%	Independent Living		11	61.11%
	Asian Pacific Islander	0	0.00%	In An Institution		0	0.00%
	Alaskan	0	0.00%	Supportive Independent Living		3	16.67%
	Other	0	0.00%	Unknown		0	0.00%
	TOTAL:	18	100.00%	TOTAL:		18	100.00%

Program Highlights

Matt is a native Floridian and an outstanding success story at Jeff Industries. A friend originally referred him to A.M.I.G.O.S. so he would find new friends with healthier interests. He had trouble socializing in the past and his everyday life had become overwhelming. At Jeff, he found new friends and started adopting better hobbies and habits. "My attitude just changed," says Matt and "I began feeling better about myself." Matt worked in the wood shop for about a year and on half, learned punctuality and sound work ethics. With the help of Jeff's job placement specialist, Matt was able to secure a job with Waste Management. He was recently promoted to a position on a Waste Management truck and works a full 40 hour week. Matt now has a girlfriend and loves to go salt-water fishing on the Intracoastal.

Jeff Industries

Let's Go to Work

Funding Amount Awarded:	\$136,933.00
Funding Amount Expended:	\$136,933.00

Number to be Served:	45
Actual Number Served:	57

Program Description

Program provides participants an opportunity to earn an income while working on the personal barriers to transition to competitive employment.

Outcome Indicator

71% or 32 of 45 adults with severe or persistent mental illnesses will average 96 annual days worked for pay by working at least 24 paid days per quarter.

Actual Outcome Percentage Achieved
97.78%

Program Participant Demographic Data

Category	Characteristic	#	%	Category	Characteristic	#	%
Gender	Female	12	21.05%	Age	17 and under	0	0.00%
	Male	45	78.95%		18 to 30	18	31.58%
	Unknown	0	0.00%		31 to 45	21	36.84%
	TOTAL:	57	100.00%		46 to 64	18	31.58%
Veteran	Yes	0	0.00%		65 and over	0	0.00%
	No	57	100.00%		Unknown	0	0.00%
	Unknown	0	0.00%		TOTAL:	57	100.00%
	TOTAL:	57	100.00%		Housing Arrangement	Homeless	0
Race	White	42	73.68%	Dependent Living		29	50.88%
	Black	12	21.05%	Foster Care		0	0.00%
	American Indian	0	0.00%	Independent Living		24	42.11%
	Asian Pacific Islander	0	0.00%	In An Institution		0	0.00%
	Alaskan	0	0.00%	Supportive Independent Living		4	7.02%
	Other	3	5.26%	Unknown		0	0.00%
	TOTAL:	57	100.00%	TOTAL:		57	100.00%

Jerome Golden Center

Glades Adult Crisis Stabilization

Funding Amount Awarded:	\$248,664.00
Funding Amount Expended:	\$248,664.00

Number to be Served:	275
Actual Number Served:	127

Program Description

Program intervenes in crisis situations when individuals are a threat to themselves or others, prevents individuals from entering the criminal justice system and stabilizes them in a protective environment.

Outcome Indicator

86% or 237 of 275 adults in mental health crisis will live in a stable housing environment.

Actual Outcome Percentage Achieved

78.89%

Program Participant Demographic Data

Category	Characteristic	#	%	Category	Characteristic	#	%
Gender	Female	50	39.37%	Age	17 and under	0	0.00%
	Male	77	60.63%		18 to 30	37	29.13%
	Unknown	0	0.00%		31 to 45	51	40.16%
	TOTAL:	127	100.00%		46 to 64	36	28.35%
Veteran	Yes	1	0.79%		65 and over	3	2.36%
	No	116	91.34%		Unknown	0	0.00%
	Unknown	10	7.87%		TOTAL:	127	100.00%
	TOTAL:	127	100.00%	Housing Arrangement	Homeless	20	15.75%
Race	White	35	27.56%		Dependent Living	4	3.15%
	Black	81	63.78%		Foster Care	0	0.00%
	American Indian	0	0.00%		Independent Living	5	3.94%
	Asian Pacific Islander	0	0.00%		In An Institution	0	0.00%
	Alaskan	0	0.00%		Supportive Independent Living	0	0.00%
	Other	11	8.66%		Unknown	98	77.17%
	TOTAL:	127	100.00%		TOTAL:	127	100.00%

Jerome Golden Center

Glades Adult Detox

Funding Amount Awarded:	\$155,295.00
Funding Amount Expended:	\$155,295.00

Number to be Served:	85
Actual Number Served:	56

Program Description

Program utilizes medical or psychosocial treatment procedures and a supportive counseling regiment to assist clients in their efforts to detox from the physiological effects of the abuse of alcohol and mood altering drugs.

Outcome Indicator

80% or 68 of 85 persons will live in a stable housing environment at time of discharge.

Actual Outcome Percentage Achieved

72.86%

Program Participant Demographic Data

Category	Characteristic	#	%	Category	Characteristic	#	%
Gender	Female	27	48.21%	Age	17 and under	0	0.00%
	Male	29	51.79%		18 to 30	13	23.21%
	Unknown	0	0.00%		31 to 45	23	41.07%
	TOTAL:	56	100.00%		46 to 64	20	35.71%
Veteran	Yes	0	0.00%		65 and over	0	0.00%
	No	50	89.29%		Unknown	0	0.00%
	Unknown	6	10.71%		TOTAL:	56	100.00%
	TOTAL:	56	100.00%		Housing Arrangement	Homeless	16
Race	White	43	76.79%	Dependent Living		1	1.79%
	Black	10	17.86%	Foster Care		0	0.00%
	American Indian	0	0.00%	Independent Living		0	0.00%
	Asian Pacific Islander	0	0.00%	In An Institution		0	0.00%
	Alaskan	0	0.00%	Supportive Independent Living		1	1.79%
	Other	3	5.36%	Unknown		38	67.86%
	TOTAL:	56	100.00%	TOTAL:		56	100.00%

Program Highlights

One of our clients needing detox and rehab services for alcohol use disorder is with us for his third time. While we worked closely with his mother, and he was eager to comply with treatment during his second visit, he returned to us in mid-March for his third detox admission and was discharged to our co-occurring residential program. Thanks to the dedicated and collaborative efforts of the nursing, medical, psychosocial, and psychiatric team, he is now sober. His outlook is so positive from his experience that he is helping other participants stay in the program when they feel anxious, depressed, down, and discouraged.

Jerome Golden Center

Glades Child Crisis Stabilization

Funding Amount Awarded:	\$36,044.00
Funding Amount Expended:	\$36,044.00

Number to be Served:	90
Actual Number Served:	34

Program Description

Program provides short-term intervention in crisis situations and stabilizes children who are experiencing acute crises, returning them to their family or the least restrictive environment as soon as possible

Outcome Indicator

64% or 58 of 90 children with emotional disturbances (ED) will improve their level of functioning.

Actual Outcome Percentage Achieved

40.00%

Program Participant Demographic Data

Category	Characteristic	#	%	Category	Characteristic	#	%
Gender	Female	19	55.88%	Age	17 and under	31	91.18%
	Male	15	44.12%		18 to 30	2	5.88%
	Unknown	0	0.00%		31 to 45	1	2.94%
	TOTAL:	34	100.00%		46 to 64	0	0.00%
Veteran	Yes	0	0.00%		65 and over	0	0.00%
	No	33	97.06%		Unknown	0	0.00%
	Unknown	1	2.94%		TOTAL:	34	100.00%
	TOTAL:	34	100.00%		Housing Arrangement	Homeless	0
Race	White	10	29.41%	Dependent Living		18	52.94%
	Black	20	58.82%	Foster Care		0	0.00%
	American Indian	0	0.00%	Independent Living		1	2.94%
	Asian Pacific Islander	0	0.00%	In An Institution		0	0.00%
	Alaskan	0	0.00%	Supportive Independent Living		2	5.88%
	Other	4	11.76%	Unknown		13	38.24%
	TOTAL:	34	100.00%	TOTAL:		34	100.00%

Jerome Golden Center

Inpatient Psychiatric Services

Funding Amount Awarded:	\$590,865.00
Funding Amount Expended:	\$590,865.00

Number to be Served:	1200
Actual Number Served:	758

Program Description

Program provides a safe and secure environment for high-risk populations when individuals are a threat to themselves or others in a least restrictive environment. Services include bio-psychosocial assessment, participation of patient and family/significant others, when appropriate, in formulation of treatment and discharge plans.

Outcome Indicator

86% or 1290 of 1500 adults in mental health crisis will live in a stable housing environment.

Actual Outcome Percentage Achieved

71.51%

Program Participant Demographic Data

Category	Characteristic	#	%	Category	Characteristic	#	%
Gender	Female	250	32.98%	Age	17 and under	0	0.00%
	Male	508	67.02%		18 to 30	175	23.09%
	Unknown	0	0.00%		31 to 45	271	35.75%
	TOTAL:	758	100.00%		46 to 64	282	37.20%
Veteran	Yes	7	0.92%		65 and over	30	3.96%
	No	716	94.46%		Unknown	0	0.00%
	Unknown	35	4.62%		TOTAL:	758	100.00%
	TOTAL:	758	100.00%	Housing Arrangement	Homeless	95	12.53%
Race	White	367	48.42%		Dependent Living	42	5.54%
	Black	332	43.80%		Foster Care	0	0.00%
	American Indian	1	0.13%		Independent Living	122	16.09%
	Asian Pacific Islander	3	0.40%		In An Institution	9	1.19%
	Alaskan	0	0.00%		Supportive Independent Living	13	1.72%
	Other	55	7.26%		Unknown	477	62.93%
	TOTAL:	758	100.00%		TOTAL:	758	100.00%

Jerome Golden Center

Mobile Crisis Team

Funding Amount Awarded:	\$160,274.00
Funding Amount Expended:	\$160,274.00

Number to be Served:	200
Actual Number Served:	359

Program Description

Program serves residents who are in acute mental distress. Clinicians are available 24 hours per day, seven (7) days per week to go into the school, the home and/or the community and remain for as long as is necessary to defuse the crisis situation, to adequately assess treatment needs, and to provide referrals and follow up.

Outcome Indicator

60% or 120 of 200 children will not require inpatient hospitalization within the next 30 days following MCT intervention.

Actual Outcome Percentage Achieved

91.49%

Program Participant Demographic Data

Category	Characteristic	#	%	Category	Characteristic	#	%
Gender	Female	131	36.49%	Age	17 and under	331	92.20%
	Male	228	63.51%		18 to 30	21	5.85%
	Unknown	0	0.00%		31 to 45	0	0.00%
	TOTAL:	359	100.00%		46 to 64	0	0.00%
Veteran	Yes	0	0.00%		65 and over	0	0.00%
	No	359	100.00%		Unknown	7	1.95%
	Unknown	0	0.00%		TOTAL:	359	100.00%
	TOTAL:	359	100.00%		Housing Arrangement	Homeless	0
Race	White	80	22.28%	Dependent Living		0	0.00%
	Black	188	52.37%	Foster Care		0	0.00%
	American Indian	0	0.00%	Independent Living		0	0.00%
	Asian Pacific Islander	0	0.00%	In An Institution		0	0.00%
	Alaskan	0	0.00%	Supportive Independent Living		0	0.00%
	Other	91	25.35%	Unknown		359	100.00%
	TOTAL:	359	100.00%	TOTAL:		359	100.00%

Program Highlights

A 13-year-old boy of Chinese descent was referred to Mobile Crisis for making suicidal statements. He was afraid he would "fail his father" who pressured him for academic achievement and forbid him from social activities. MCT staff spoke with his father who verified his high expectations and commented his son was not "serious" about suicide. Staff researched Chinese culture, and used academic articles on the importance of social activities and destructiveness of stress on a child to relate to the father. He gained insight and agreed to counseling for his son, and became more open, allowing his son to participate in sports. His son was happier, less stressed, and thankful for MCT's help.

Mental Health Association

Breaking Barriers for Behavioral Health

Funding Amount Awarded:	\$93,177.00
Funding Amount Expended:	\$93,177.00

Number to be Served:	2,500
Actual Number Served:	2,474*

Program Description

Program is a Front Door for Help with hotline information and referrals, outreach, care coordination, training and public awareness campaigns. Program will improve access to care and will identify children and youth that need help sooner and get them connected to an increasingly coordinated and quality array of integrated behavioral health services.

Outcome Indicator

80% or 80 of 100 people reached in a follow-up call will report getting the help they need.

Actual Outcome Percentage Achieved

66.62%

Program Participant Demographic Data

Category	Characteristic	#	%	Category	Characteristic	#	%
Gender	Female	425	69.33%	Age	17 and under	120	19.58%
	Male	187	30.51%		18 to 30	78	12.72%
	Other	1	0.16%		31 to 45	72	11.75%
	TOTAL:	613	100.00%		46 to 64	93	15.17%
Veteran	Yes	7	1.14%		65 and over	30	4.89%
	No	606	98.86%		Unknown	220	35.89%
	Unknown	0	0.00%		TOTAL:	613	100.00%
	TOTAL:	613	100.00%		Housing Arrangement	Homeless	0
Race	White	289	47.15%	Dependent Living		0	0.00%
	Black	90	14.68%	Foster Care		0	0.00%
	American Indian	0	0.00%	Independent Living		0	0.00%
	Asian Pacific Islander	7	1.14%	In An Institution		0	0.00%
	Alaskan	0	0.00%	Supportive Independent Living		0	0.00%
	Other	227	37.03%	Unknown		613	100.00%
	TOTAL:	613	100.00%	TOTAL:		613	100.00%

Program Highlights

The Mental Health Association of Palm Beach County (MHAPBC) has serviced over 2,000 people in our helpline and screenings programs. Many of these people were unaware of the resources available in Palm Beach County that could provide help to themselves or their loved ones. Our helpline and screenings programs aim to help those in need of mental health resources so they can avoid severe mental illness. A helpline caller stated, "You've been the most helpful out of anyone so far" after she was able to book an appointment with one of the resources we gave her.

South County Mental Health

Crisis Stabilization Unit

Funding Amount Awarded:	\$809,174.00
Funding Amount Expended:	\$809,174.00

Number to be Served:	1,662
Actual Number Served:	408

Program Description

Program provides a safe and therapeutic environment for the stabilization of a severe psychiatric, emotional or behavioral crisis. This program works towards the reduction of acute symptoms to ensure the safe return of an individual to their home and family and to get them back into the community as quickly as possible.

Outcome Indicator

80% or 1330 of 1662 unduplicated clients in a mental health crisis will live in a stable housing environment.

Actual Outcome Percentage Achieved

85.15%

Program Participant Demographic Data

Category	Characteristic	#	%	Category	Characteristic	#	%
Gender	Female	142	34.80%	Age	17 and under	0	0.00%
	Male	266	65.20%		18 to 30	151	37.01%
	Unknown	0	0.00%		31 to 45	128	31.37%
	TOTAL:	408	100.00%		46 to 64	120	29.41%
Veteran	Yes	18	4.41%		65 and over	9	2.21%
	No	390	95.59%		Unknown	0	0.00%
	Unknown	0	0.00%		TOTAL:	408	100.00%
	TOTAL:	408	100.00%		Housing Arrangement	Homeless	54
Race	White	237	58.09%	Dependent Living		28	6.86%
	Black	114	27.94%	Foster Care		1	0.25%
	American Indian	0	0.00%	Independent Living		301	73.77%
	Asian Pacific Islander	4	0.98%	In An Institution		8	1.96%
	Alaskan	0	0.00%	Supportive Independent Living		13	3.19%
	Other	53	12.99%	Unknown		3	0.74%
	TOTAL:	408	100.00%	TOTAL:		408	100.00%

South County Mental Health

Intake and Evaluation & Mobile Crisis Team

Funding Amount Awarded:	\$315,099.00
Funding Amount Expended:	\$315,099.00

Number to be Served:	2,089
Actual Number Served:	478

Program Description

Program provides timely assessment, evaluation and counseling intervention services in the community. The team functions as the initial contact point for all persons who require mental health services in the community.

Outcome Indicator

85% or 1776 of 2089 projected client interventions will live in a stable housing environment.

Actual Outcome Percentage Achieved

86.62%

Program Participant Demographic Data

Category	Characteristic	#	%	Category	Characteristic	#	%
Gender	Female	255	53.35%	Age	17 and under	0	0.00%
	Male	223	46.65%		18 to 30	169	35.36%
	Unknown	0	0.00%		31 to 45	119	24.90%
	TOTAL:	478	100.00%		46 to 64	136	28.45%
Veteran	Yes	10	2.09%		65 and over	54	11.30%
	No	468	97.91%		Unknown	0	0.00%
	Unknown	0	0.00%		TOTAL:	478	100.00%
	TOTAL:	478	100.00%		Housing Arrangement	Homeless	15
Race	White	308	64.44%	Dependent Living		39	8.16%
	Black	70	14.64%	Foster Care		0	0.00%
	American Indian	0	0.00%	Independent Living		406	84.94%
	Asian Pacific Islander	0	0.00%	In An Institution		4	0.84%
	Alaskan	0	0.00%	Supportive Independent Living		6	1.26%
	Other	100	20.92%	Unknown		8	1.67%
	TOTAL:	478	100.00%	TOTAL:		478	100.00%

South County Mental Health

Psychiatric and Medical Services

Funding Amount Awarded:	\$415,039.00
Funding Amount Expended:	\$415,039.00

Number to be Served:	4,061
Actual Number Served:	1,290

Program Description

Program provides monitoring of a person's condition and the monitoring of their prescribed medications. Psychiatric and medical services are utilized exclusively by some clients and, for others, are used in conjunction with other SCMHC services with the overall goal of remaining in the community.

Outcome Indicator

24% or 975 of 4061 unduplicated clients utilizing psychiatric outpatient services will be competitively employed.

Actual Outcome Percentage Achieved

23.95%

Program Participant Demographic Data

Category	Characteristic	#	%	Category	Characteristic	#	%
Gender	Female	627	48.60%	Age	17 and under	0	0.00%
	Male	663	51.40%		18 to 30	353	27.36%
	Unknown	0	0.00%		31 to 45	453	35.12%
	TOTAL:	1290	100.00%		46 to 64	454	35.19%
Veteran	Yes	20	1.55%		65 and over	30	2.33%
	No	1267	98.22%		Unknown	0	0.00%
	Unknown	3	0.23%		TOTAL:	1290	100.00%
	TOTAL:	1290	100.00%	Housing Arrangement	Homeless	38	2.95%
Race	White	793	61.47%		Dependent Living	193	14.96%
	Black	220	17.05%		Foster Care	1	0.08%
	American Indian	1	0.08%		Independent Living	1008	78.14%
	Asian Pacific Islander	16	1.24%		In An Institution	11	0.85%
	Alaskan	0	0.00%		Supportive Independent Living	18	1.40%
	Other	260	20.16%		Unknown	21	1.63%
	TOTAL:	1290	100.00%		TOTAL:	1290	100.00%

Special Needs / Developmental Disabilities

Overall Summary

Funding Amount Awarded:	\$1,583,721.00
Funding Amount Expended:	\$1,558,409.75

Number to be Served:	1,378
Actual Number Served:	1,279*

Agencies:	9
Programs:	12

Program Description

Programs and services in this service category address outcomes and performance measures that help children and adults with special needs/developmental disabilities achieve their personal goals to maximize their independence in community settings. Services provided in this category address at least one of the following life areas: Employment/Income, Residential/Living, Advocacy, or Support Services. Provision of these services maximizes the independence of participants.

Program Participant Demographic Data

Category	Characteristic	#	%	Category	Characteristic	#	%
Gender	Female	400	46.84%	Age	17 and under	60	7.03%
	Male	454	53.16%		18 to 30	164	19.20%
	Unknown	0	0.00%		31 to 45	179	20.96%
	TOTAL:	854	100.00%		46 to 64	326	38.17%
Veteran	Yes	44	5.15%		65 and over	125	14.64%
	No	187	21.90%		Unknown	0	0.00%
	Unknown	623	72.95%		TOTAL:	854	100.00%
	TOTAL:	854	100.00%	Housing Arrangement	Homeless	44	5.15%
Race	White	214	25.06%		Dependent Living	331	38.76%
	Black	288	33.72%		Foster Care	1	0.12%
	American Indian	3	0.35%		Independent Living	342	40.05%
	Asian Pacific Islander	7	0.82%		In An Institution	17	1.99%
	Alaskan	0	0.00%		Supportive Independent Living	114	13.35%
	Other	342	40.05%		Unknown	5	0.59%
	TOTAL:	854	100.00%		TOTAL:	854	100.00%

* Of the 1,279 participants reported to be served, 854 submitted demographic information.

Coalition for Independent Living Options

ALERT

Funding Amount Awarded:	\$56,777.00
Funding Amount Expended:	\$56,777.00

Number to be Served:	60
Actual Number Served:	32

Program Description

Program teaches independent living skills, social skills, HIV/STD prevention and responsible sexual behavior as well as travel training, job readiness and college preparation for high school students with disabilities and more intensive job readiness/academic enhancements (college/vocational training) for young adults.

Outcome Indicator

80% or 48 of 60 participants will improve their social skills.

Actual Outcome Percentage Achieved

92.31%

Program Participant Demographic Data

Category	Characteristic	#	%	Category	Characteristic	#	%
Gender	Female	11	34.38%	Age	17 and under	6	18.75%
	Male	21	65.63%		18 to 30	26	81.25%
	Unknown	0	0.00%		31 to 45	0	0.00%
	TOTAL:	32	100.00%		46 to 64	0	0.00%
Veteran	Yes	0	0.00%		65 and over	0	0.00%
	No	9	28.13%		Unknown	0	0.00%
	Unknown	23	71.88%		TOTAL:	32	100.00%
	TOTAL:	32	100.00%	Housing Arrangement	Homeless	0	0.00%
Race	White	6	18.75%		Dependent Living	29	90.63%
	Black	11	34.38%		Foster Care	0	0.00%
	American Indian	0	0.00%		Independent Living	3	9.38%
	Asian Pacific Islander	0	0.00%		In An Institution	0	0.00%
	Alaskan	0	0.00%		Supportive Independent Living	0	0.00%
	Other	15	46.88%		Unknown	0	0.00%
	TOTAL:	32	100.00%		TOTAL:	32	100.00%

Program Highlights

Four young adults (22-26-year-old), with special needs who had recently graduated from high school to the couch participated in ALERT's employment readiness program for 22-26-year-old high school graduates. Three times a week for 8 weeks, the group learned skills to get and keep a job. The students went bowling to improve their social skills and attended a job fair where they introduced themselves to potential employers and handed out their newly created resumes. Each participant received a certificate of completion and participated in a graduation ceremony. Of the 4 students, 3 are currently pursuing higher education and 1 is looking for employment.

Coalition for Independent Living Options

SAIL

Funding Amount Awarded:	\$169,672.00
Funding Amount Expended:	\$169,672.00

Number to be Served:	150
Actual Number Served:	402

Program Description

Program provides opportunities to become self-sufficient and to maintain independence through assistance with entitlement benefits, independent skill training, advocacy, learning to self-advocate, building peer support networks, financial literacy workshops and increased knowledge of community resources.

Outcome Indicator

70% or 105 of 150 adults with disabilities will increase knowledge of subject matter.

Actual Outcome Percentage Achieved

96.52%

Program Participant Demographic Data

Category	Characteristic	#	%	Category	Characteristic	#	%
Gender	Female	205	51.00%	Age	17 and under	1	0.25%
	Male	197	49.00%		18 to 30	60	14.93%
	Unknown	0	0.00%		31 to 45	79	19.65%
	TOTAL:	402	100.00%		46 to 64	193	48.01%
Veteran	Yes	44	10.95%		65 and over	69	17.16%
	No	24	5.97%		Unknown	0	0.00%
	Unknown	334	83.08%		TOTAL:	402	100.00%
	TOTAL:	402	100.00%		Housing Arrangement	Homeless	44
Race	White	101	25.12%	Dependent Living		58	14.43%
	Black	126	31.34%	Foster Care		0	0.00%
	American Indian	0	0.00%	Independent Living		265	65.92%
	Asian Pacific Islander	4	1.00%	In An Institution		0	0.00%
	Alaskan	0	0.00%	Supportive Independent Living		35	8.71%
	Other	171	42.54%	Unknown		0	0.00%
	TOTAL:	402	100.00%	TOTAL:		402	100.00%

Program Highlights

R and S needed to leave where they were living; they were tired of renting and decided to buy a house. Unfortunately, they could not find a real estate agent who could communicate through American Sign Language (left) and feared they would not find housing before their deadline to move. With the help of the Irene S. Deaf/HH advocate, the couple was introduced to Jerald Cohen, who is Deaf licensed realtor. He found the couple a home in Lake Worth and they are very satisfied.

Easter Seals

Early Intervention and Advocacy

Funding Amount Awarded:	\$46,223.00
Funding Amount Expended:	\$41,978.34

Number to be Served:	30
Actual Number Served:	30

Program Description

Program provides children ages 0-5 with special needs, disabilities, developmental delays, and critically at-risk children with early intervention in order to help them navigate their environments, live as part of a family, develop friendships, and master school success later in life.

Outcome Indicator

80% or 24 of 30 children in the program for at least 6 months will show improvement in 1 or more major domains based on assessments given (VPK, ASQ, ASQ-SE).

Actual Outcome Percentage Achieved

84.62%

Program Participant Demographic Data

Category	Characteristic	#	%	Category	Characteristic	#	%
Gender	Female	7	23.33%	Age	17 and under	30	100.00%
	Male	23	76.67%		18 to 30	0	0.00%
	Unknown	0	0.00%		31 to 45	0	0.00%
	TOTAL:	30	100.00%		46 to 64	0	0.00%
Veteran	Yes	0	0.00%		65 and over	0	0.00%
	No	12	40.00%		Unknown	0	0.00%
	Unknown	18	60.00%		TOTAL:	30	100.00%
	TOTAL:	30	100.00%	Housing Arrangement	Homeless	0	0.00%
Race	White	11	36.67%		Dependent Living	14	46.67%
	Black	15	50.00%		Foster Care	1	3.33%
	American Indian	0	0.00%		Independent Living	15	50.00%
	Asian Pacific Islander	0	0.00%		In An Institution	0	0.00%
	Alaskan	0	0.00%		Supportive Independent Living	0	0.00%
	Other	4	13.33%		Unknown	0	0.00%
	TOTAL:	30	100.00%		TOTAL:	30	100.00%

Gulfstream Goodwill Industries

Client Assistance and Advocacy

Funding Amount Awarded:	\$108,512.00
Funding Amount Expended:	\$108,512.00

Number to be Served:	300
Actual Number Served:	49

Program Description

Program provides advocacy and care management services for the deaf and hard-of-hearing population through effective communication, assessment, education, resources, service facilitation, intervention and advocacy, which includes helping to ensure local businesses and community service providers understand and comply with the Americans with Disabilities Act.

Outcome Indicator

80% or 240 of 300 people receiving services will resolve their unmet needs or crisis situation successfully.

Actual Outcome Percentage Achieved

73.47%

Program Participant Demographic Data

Category	Characteristic	#	%	Category	Characteristic	#	%
Gender	Female	28	57.14%	Age	17 and under	0	0.00%
	Male	21	42.86%		18 to 30	5	10.20%
	Unknown	0	0.00%		31 to 45	11	22.45%
	TOTAL:	49	100.00%		46 to 64	13	26.53%
Veteran	Yes	0	0.00%		65 and over	20	40.82%
	No	0	0.00%		Unknown	0	0.00%
	Unknown	49	100.00%		TOTAL:	49	100.00%
	TOTAL:	49	100.00%		Housing Arrangement	Homeless	0
Race	White	34	69.39%	Dependent Living		0	0.00%
	Black	12	24.49%	Foster Care		0	0.00%
	American Indian	1	2.04%	Independent Living		47	95.92%
	Asian Pacific Islander	0	0.00%	In An Institution		0	0.00%
	Alaskan	0	0.00%	Supportive Independent Living		2	4.08%
	Other	2	4.08%	Unknown		0	0.00%
	TOTAL:	49	100.00%	TOTAL:		49	100.00%

Gulfstream Goodwill Industries

Resource Connection and Community Education

Funding Amount Awarded:	\$43,389.00
Funding Amount Expended:	\$29,011.78

Number to be Served:	500 clients & 96 events
Actual Number Served:	425 clients & 80 events

Program Description

Program's primary target population is the deaf and hard-of-hearing with the general community as the secondary target. Program offers continuous existing services while responding to phone calls and walk-in inquiries, giving educational presentations to clients and communities, and attending health fairs, print articles, online media.

Outcome Indicator

85% or 425 of 500 people will receive information and referral to programs and services to resolve problems for persons who are deaf or hard of hearing.

AND

85% or 82 of 96 events will be held to inform the community about the rights and communication needs of the deaf and the responsibilities of the community to meet those needs.

Actual Outcome Percentage Achieved

85.00%

AND

83.33%

Program Highlights

- 425 unduplicated people were served under the resource connection. The goal was to serve 500 people.
- 80 events were held throughout the year. The goal was 96 events.
- It was a difficult year with staff in Deaf Services. Turnover within the program was an issue in allowing our community education to reach the number of events that we predicted as well as had achieved in years past. Community education is a key element for the Deaf community to be fully inclusive with the hearing community as well as the hearing community to learn about dealing with and educate the cultural sensitivity about the deaf community.
- The following demographics were collected: 37% male and 66% female ages between 24-96 years old. We were unable to document ethnicity as these calls were on the phone and that information was not always easy to obtain.

Legal Aid Society

Guardian Advocacy Project

Funding Amount Awarded:	\$92,245.00
Funding Amount Expended:	\$92,245.00

Number to be Served:	20
Actual Number Served:	20

Program Description

Program provides services for youth, age 18-24, who have recently aged out or are currently aging out of foster care and who are designated as developmentally disabled and/or have special needs; and individuals over the age of 25 who have a developmental disability or have been adjudicated incapacitated and are without family or friends to care for or assist them, including those who have been deserted by or lost their caregivers through death, age, or disability.

Outcome Indicator

80% or 16 of 20 clients served will achieve their Annual GAP Goal within 1 year of the goal being developed.

Actual Outcome Percentage Achieved

88.89%

Program Participant Demographic Data

Category	Characteristic	#	%	Category	Characteristic	#	%
Gender	Female	8	40.00%	Age	17 and under	0	0.00%
	Male	12	60.00%		18 to 30	17	85.00%
	Unknown	0	0.00%		31 to 45	3	15.00%
	TOTAL:	20	100.00%		46 to 64	0	0.00%
Veteran	Yes	0	0.00%		65 and over	0	0.00%
	No	20	100.00%		Unknown	0	0.00%
	Unknown	0	0.00%		TOTAL:	20	100.00%
	TOTAL:	20	100.00%	Housing Arrangement	Homeless	0	0.00%
Race	White	1	5.00%		Dependent Living	0	0.00%
	Black	11	55.00%		Foster Care	0	0.00%
	American Indian	0	0.00%		Independent Living	0	0.00%
	Asian Pacific Islander	0	0.00%		In An Institution	15	75.00%
	Alaskan	0	0.00%		Supportive Independent Living	5	25.00%
	Other	8	40.00%		Unknown	0	0.00%
	TOTAL:	20	100.00%		TOTAL:	20	100.00%

Palm Beach Habilitation Center

Computer Training Program

Funding Amount Awarded:	\$73,389.00
Funding Amount Expended:	\$73,389.00

Number to be Served:	80
Actual Number Served:	80

Program Description

Program provides opportunities for individuals with disabilities to receive the training and skills necessary to make a smooth and successful transition into competitive community employment. This program is designed to expose participants to the general operation of the computer and specific skills training in software programs used in industry settings.

Outcome Indicator

70% or 56 of 80 participants will increase their computer skills by completing at least three personal achievement goals.

Actual Outcome Percentage Achieved

96.20%

Program Participant Demographic Data

Category	Characteristic	#	%	Category	Characteristic	#	%
Gender	Female	40	50.00%	Age	17 and under	0	0.00%
	Male	40	50.00%		18 to 30	27	33.75%
	Unknown	0	0.00%		31 to 45	26	32.50%
	TOTAL:	80	100.00%		46 to 64	24	30.00%
Veteran	Yes	0	0.00%		65 and over	3	3.75%
	No	23	28.75%		Unknown	0	0.00%
	Unknown	57	71.25%		TOTAL:	80	100.00%
	TOTAL:	80	100.00%		Housing Arrangement	Homeless	0
Race	White	39	48.75%	Dependent Living		70	87.50%
	Black	21	26.25%	Foster Care		0	0.00%
	American Indian	0	0.00%	Independent Living		4	5.00%
	Asian Pacific Islander	1	1.25%	In An Institution		1	1.25%
	Alaskan	0	0.00%	Supportive Independent Living		5	6.25%
	Other	19	23.75%	Unknown		0	0.00%
	TOTAL:	80	100.00%	TOTAL:		80	100.00%

Palm Beach Habilitation Center

Seniors in Transition and Retirement Services

Funding Amount Awarded:	\$208,984.00
Funding Amount Expended:	\$208,984.00

Number to be Served:	30
Actual Number Served:	31

Program Description

Program provides opportunities for individuals with disabilities to receive the training and skills necessary to make a smooth and successful transition into competitive community employment. This program is designed to expose participants to the general operation of the computer and specific skills training in software programs used in industry settings.

Outcome Indicator

80% or 24 of 30 individuals who access the program will remain active in their community rather than entering a nursing home or institutional level of care.

Actual Outcome Percentage Achieved

83.87%

Program Participant Demographic Data

Category	Characteristic	#	%	Category	Characteristic	#	%
Gender	Female	18	58.06%	Age	17 and under	0	0.00%
	Male	13	41.94%		18 to 30	0	0.00%
	Unknown	0	0.00%		31 to 45	0	0.00%
	TOTAL:	31	100.00%		46 to 64	17	54.84%
Veteran	Yes	0	0.00%		65 and over	14	45.16%
	No	25	80.65%		Unknown	0	0.00%
	Unknown	6	19.35%		TOTAL:	31	100.00%
	TOTAL:	31	100.00%		Housing Arrangement	Homeless	0
Race	White	8	25.81%	Dependent Living		28	90.32%
	Black	4	12.90%	Foster Care		0	0.00%
	American Indian	0	0.00%	Independent Living		0	0.00%
	Asian Pacific Islander	0	0.00%	In An Institution		1	3.23%
	Alaskan	0	0.00%	Supportive Independent Living		2	6.45%
	Other	19	61.29%	Unknown		0	0.00%
	TOTAL:	31	100.00%	TOTAL:		31	100.00%

Seagull Industries

Achievement Center

Funding Amount Awarded:	\$278,393.00
Funding Amount Expended:	\$278,393.00

Number to be Served:	110
Actual Number Served:	105

Program Description

Program goal is to provide each developmentally challenged client with every opportunity to learn how to conduct themselves in a "controlled" work setting while earning piece rate wages (according to Department of Labor standards).

Outcome Indicator

90% or 90 of 110 participants are expected to achieve 2 steps of their Individualized Plan Short Term Objective each quarter during the year.

Actual Outcome Percentage Achieved

83.33%

Program Participant Demographic Data

Category	Characteristic	#	%	Category	Characteristic	#	%
Gender	Female	38	36.19%	Age	17 and under	0	0.00%
	Male	67	63.81%		18 to 30	17	16.19%
	Unknown	0	0.00%		31 to 45	32	30.48%
	TOTAL:	105	100.00%		46 to 64	44	41.90%
Veteran	Yes	0	0.00%		65 and over	12	11.43%
	No	0	0.00%		Unknown	0	0.00%
	Unknown	105	100.00%		TOTAL:	105	100.00%
	TOTAL:	105	100.00%		Housing Arrangement	Homeless	0
Race	White	2	1.90%	Dependent Living		37	35.24%
	Black	39	37.14%	Foster Care		0	0.00%
	American Indian	1	0.95%	Independent Living		8	7.62%
	Asian Pacific Islander	2	1.90%	In An Institution		0	0.00%
	Alaskan	0	0.00%	Supportive Independent Living		55	52.38%
	Other	61	58.10%	Unknown		5	4.76%
	TOTAL:	105	100.00%	TOTAL:		105	100.00%

The ARC of Palm Beach County

Residential Program

Funding Amount Awarded:	\$246,962.00
Funding Amount Expended:	\$240,290.60

Number to be Served:	30
Actual Number Served:	30

Program Description

Program provides a continuum of services, rooted in a person-centered planning process, supporting adults with developmental disabilities in achieving their personal goals for independent living and the fullest possible inclusion in their communities.

Outcome Indicator

90% or 24 of 27 clients will achieve at least one goal from their individual implementation plan during the program year.

Actual Outcome Percentage Achieved

100.00%

Program Participant Demographic Data

Category	Characteristic	#	%	Category	Characteristic	#	%
Gender	Female	12	40.00%	Age	17 and under	0	0.00%
	Male	18	60.00%		18 to 30	3	10.00%
	Unknown	0	0.00%		31 to 45	5	16.67%
	TOTAL:	30	100.00%		46 to 64	16	53.33%
Veteran	Yes	0	0.00%		65 and over	6	20.00%
	No	23	76.67%		Unknown	0	0.00%
	Unknown	7	23.33%		TOTAL:	30	100.00%
	TOTAL:	30	100.00%	Housing Arrangement	Homeless	0	0.00%
Race	White	3	10.00%		Dependent Living	30	100.00%
	Black	0	0.00%		Foster Care	0	0.00%
	American Indian	1	3.33%		Independent Living	0	0.00%
	Asian Pacific Islander	1	3.33%		In An Institution	0	0.00%
	Alaskan	0	0.00%		Supportive Independent Living	0	0.00%
	Other	25	83.33%		Unknown	0	0.00%
	TOTAL:	30	100.00%		TOTAL:	30	100.00%

Program Highlights

Thanks to support from FAA, The Arc is able to continue to provide community-based residential housing for individuals with developmental disabilities that allows them to remain independent within their community. With the added support of from employment services one of those residents has secured employment with Otis Elevator as part of the PALS enclave employment program. He earned his first paycheck in March. We look forward to placing many more individuals with developmental disabilities in inclusive employment settings.

The ARC of the Glades

Adult Developmental Services System of Care

Funding Amount Awarded:	\$191,880.00
Funding Amount Expended:	\$191,879.75

Number to be Served:	48
Actual Number Served:	49

Program Description

Program provides adults with developmental disabilities who reside in western PBC with a continuum of services leading to independent living, including combinations of Facility-based Adult Day Training, Community Inclusion, Supported Living and Supported Employment services and activities.

Outcome Indicator

75% or 36 of 48 clients will achieve at least 1 short-term objective (STO).

Actual Outcome Percentage Achieved

95.00%

Program Participant Demographic Data

Category	Characteristic	#	%	Category	Characteristic	#	%
Gender	Female	26	53.06%	Age	17 and under	0	0.00%
	Male	23	46.94%		18 to 30	6	12.24%
	Unknown	0	0.00%		31 to 45	23	46.94%
	TOTAL:	49	100.00%		46 to 64	19	38.78%
Veteran	Yes	0	0.00%		65 and over	1	2.04%
	No	49	100.00%		Unknown	0	0.00%
	Unknown	0	0.00%		TOTAL:	49	100.00%
	TOTAL:	49	100.00%		Housing Arrangement	Homeless	0
Race	White	5	10.20%	Dependent Living		39	79.59%
	Black	44	89.80%	Foster Care		0	0.00%
	American Indian	0	0.00%	Independent Living		0	0.00%
	Asian Pacific Islander	0	0.00%	In An Institution		0	0.00%
	Alaskan	0	0.00%	Supportive Independent Living		10	20.41%
	Other	0	0.00%	Unknown		0	0.00%
	TOTAL:	49	100.00%	TOTAL:		49	100.00%

United Community Options

Behavior Focused Respite

Funding Amount Awarded:	\$67,295.00
Funding Amount Expended:	\$67,277.28

Number to be Served:	20
Actual Number Served:	26

Program Description

Program provides relief to caretakers who are caring for children with behavior needs and developmental disabilities. Families are educated and trained in behavioral supports, which allows them to care for their child at home. The Behavior Focus In-Home Respite Program assists in limiting out-of-home child placements.

Outcome Indicator

80% or 16 of 20 children served for at least six (6) months will improve in at least one (1) developmental area.

Actual Outcome Percentage Achieved

100.00%

Program Participant Demographic Data

Category	Characteristic	#	%	Category	Characteristic	#	%
Gender	Female	7	26.92%	Age	17 and under	23	88.46%
	Male	19	73.08%		18 to 30	3	11.54%
	Unknown	0	0.00%		31 to 45	0	0.00%
	TOTAL:	26	100.00%		46 to 64	0	0.00%
Veteran	Yes	0	0.00%		65 and over	0	0.00%
	No	2	7.69%		Unknown	0	0.00%
	Unknown	24	92.31%	TOTAL:	26	100.00%	
	TOTAL:	26	100.00%	Housing Arrangement	Homeless	0	0.00%
Race	White	4	15.38%		Dependent Living	26	100.00%
	Black	5	19.23%		Foster Care	0	0.00%
	American Indian	0	0.00%		Independent Living	0	0.00%
	Asian Pacific Islander	2	7.69%		In An Institution	0	0.00%
	Alaskan	0	0.00%		Supportive Independent Living	0	0.00%
	Other	15	57.69%		Unknown	0	0.00%
	TOTAL:	26	100.00%		TOTAL:	26	100.00%

Program Highlights

We have had the opportunity to be a part of the Respite Education, and Support Tools (REST) National evidenced-based program. This allowed us to deliver a more comprehensive training support program for our employees as well as the opportunity to provide the community at large further insight on respite techniques. We will continue to serve the community on semi-annual basis by making this free training available. This has given us the ability to highlight the importance of respite services and better support our community through the FAA Behavioral Respite program. For more information, please visit the following link: Restprogram.org.

Domestic Abuse / Sheltering

Overall Summary

Funding Amount Awarded:	\$487,155.00
Funding Amount Expended:	\$471,576.70

Number to be Served:	430
Actual Number Served:	379

Agencies:	4
Programs:	4

Program Description

Proposals submitted in this category address outcomes and performance measures that demonstrate positive change toward the goal of assisting the victims of domestic violence.

Program Participant Demographic Data

Category	Characteristic	#	%	Category	Characteristic	#	%
Gender	Female	361	95.25%	Age	17 and under	50	13.19%
	Male	18	4.75%		18 to 30	137	36.15%
	Unknown	0	0.00%		31 to 45	140	36.94%
	TOTAL:	379	100.00%		46 to 64	52	13.72%
Veteran	Yes	0	0.00%		65 and over	0	0.00%
	No	25	6.60%		Unknown	0	0.00%
	Unknown	354	93.40%		TOTAL:	379	100.00%
	TOTAL:	379	100.00%		Housing Arrangement	Homeless	74
Race	White	172	45.38%	Dependent Living		214	56.46%
	Black	148	39.05%	Foster Care		27	7.12%
	American Indian	6	1.58%	Independent Living		59	15.57%
	Asian Pacific Islander	6	1.58%	In An Institution		0	0.00%
	Alaskan	0	0.00%	Supportive Independent Living		0	0.00%
	Other	47	12.40%	Unknown		5	1.32%
	TOTAL:	379	100.00%	TOTAL:		379	100.00%

Aid to Victims of Domestic Abuse (AVDA)

Casa Vegso

Funding Amount Awarded:	\$235,020.00
Funding Amount Expended:	\$235,020.00

Number to be Served:	110
Actual Number Served:	74

Program Description

Program provides services to victims of domestic abuse in a safe, secure, confidential shelter. While in shelter, they and their children receive food, on-site access to basic needs and services and benefits programs, counseling and case management.

Outcome Indicator

80% or 88 of 110 adult shelter residents will exit the program to violence-free living conditions.

Actual Outcome Percentage Achieved

100.00%

Program Participant Demographic Data

Category	Characteristic	#	%	Category	Characteristic	#	%
Gender	Female	74	100.00%	Age	17 and under	0	0.00%
	Male	0	0.00%		18 to 30	25	33.78%
	Unknown	0	0.00%		31 to 45	29	39.19%
	TOTAL:	74	100.00%		46 to 64	20	27.03%
Veteran	Yes	0	0.00%		65 and over	0	0.00%
	No	0	0.00%		Unknown	0	0.00%
	Unknown	74	100.00%		TOTAL:	74	100.00%
	TOTAL:	74	100.00%		Housing Arrangement	Homeless	74
Race	White	28	37.84%	Dependent Living		0	0.00%
	Black	31	41.89%	Foster Care		0	0.00%
	American Indian	0	0.00%	Independent Living		0	0.00%
	Asian Pacific Islander	2	2.70%	In An Institution		0	0.00%
	Alaskan	0	0.00%	Supportive Independent Living		0	0.00%
	Other	13	17.57%	Unknown		0	0.00%
	TOTAL:	74	100.00%	TOTAL:		74	100.00%

Children's Home Society

Nelle Smith Residence for Girls

Funding Amount Awarded:	\$92,450.00
Funding Amount Expended:	\$83,764.48

Number to be Served:	20
Actual Number Served:	26

Program Description

Program provides long-term residential services for adolescent girls, ages 13-17, who have been declared dependent on the state through the dependency court system due to a history of abuse, neglect, and/or lack of an appropriate family setting and are in need of a safe place to live.

Outcome Indicator

80% or 16 of 20 youth in Nelle Smith Residence for at least 3 months will improve and/or maintain their independent living skills, as measured by scores on assessments.

Actual Outcome Percentage Achieved

89.47%

Program Participant Demographic Data

Category	Characteristic	#	%	Category	Characteristic	#	%
Gender	Female	26	100.00%	Age	17 and under	23	88.46%
	Male	0	0.00%		18 to 30	3	11.54%
	Unknown	0	0.00%		31 to 45	0	0.00%
	TOTAL:	26	100.00%		46 to 64	0	0.00%
Veteran	Yes	0	0.00%		65 and over	0	0.00%
	No	1	3.85%		Unknown	0	0.00%
	Unknown	25	96.15%		TOTAL:	26	100.00%
	TOTAL:	26	100.00%		Housing Arrangement	Homeless	0
Race	White	6	23.08%	Dependent Living		0	0.00%
	Black	12	46.15%	Foster Care		26	100.00%
	American Indian	0	0.00%	Independent Living		0	0.00%
	Asian Pacific Islander	0	0.00%	In An Institution		0	0.00%
	Alaskan	0	0.00%	Supportive Independent Living		0	0.00%
	Other	8	30.77%	Unknown		0	0.00%
	TOTAL:	26	100.00%	TOTAL:		26	100.00%

The Children's Place at HomeSafe

Safety Net Program

Funding Amount Awarded:	\$43,677.00
Funding Amount Expended:	\$36,784.22

Number to be Served:	100
Actual Number Served:	103

Program Description

Program offers a full spectrum of services for victims of family violence, including year-round adult, teen, and child therapeutic support groups, individual therapy, crisis intervention, preventative education, and court advocacy.

Outcome Indicator

85% or 85 of 100 adult/teen victims will increase scores on post-scale.

Actual Outcome Percentage Achieved

85.33%

Program Participant Demographic Data

Category	Characteristic	#	%	Category	Characteristic	#	%
Gender	Female	85	82.52%	Age	17 and under	25	24.27%
	Male	18	17.48%		18 to 30	28	27.18%
	Unknown	0	0.00%		31 to 45	42	40.78%
	TOTAL:	103	100.00%		46 to 64	8	7.77%
Veteran	Yes	0	0.00%		65 and over	0	0.00%
	No	24	23.30%		Unknown	0	0.00%
	Unknown	79	76.70%		TOTAL:	103	100.00%
	TOTAL:	103	100.00%		Housing Arrangement	Homeless	0
Race	White	70	67.96%	Dependent Living		39	37.86%
	Black	9	8.74%	Foster Care		1	0.97%
	American Indian	0	0.00%	Independent Living		58	56.31%
	Asian Pacific Islander	3	2.91%	In An Institution		0	0.00%
	Alaskan	0	0.00%	Supportive Independent Living		0	0.00%
	Other	21	20.39%	Unknown		5	4.85%
	TOTAL:	103	100.00%	TOTAL:		103	100.00%

Young Women's Christian Association of Palm Beach County (YWCA)

Harmony House

Funding Amount Awarded:	\$116,008.00
Funding Amount Expended:	\$116,008.00

Number to be Served:	200
Actual Number Served:	176

Program Description

Program is an emergency domestic violence shelter for women and child victims of domestic violence who are in imminent danger of harm and receive victim-centered and empowerment-based services.

Outcome Indicator

65% or 130 of 200 women will exit shelter to violence-free living condition.

Actual Outcome Percentage Achieved

65.29%

Program Participant Demographic Data

Category	Characteristic	#	%	Category	Characteristic	#	%
Gender	Female	176	100.00%	Age	17 and under	2	1.14%
	Male	0	0.00%		18 to 30	81	46.02%
	Unknown	0	0.00%		31 to 45	69	39.20%
	TOTAL:	176	100.00%		46 to 64	24	13.64%
Veteran	Yes	0	0.00%		65 and over	0	0.00%
	No	0	0.00%		Unknown	0	0.00%
	Unknown	176	100.00%		TOTAL:	176	100.00%
	TOTAL:	176	100.00%		Housing Arrangement	Homeless	0
Race	White	68	38.64%	Dependent Living		175	99.43%
	Black	96	54.55%	Foster Care		0	0.00%
	American Indian	6	3.41%	Independent Living		1	0.57%
	Asian Pacific Islander	1	0.57%	In An Institution		0	0.00%
	Alaskan	0	0.00%	Supportive Independent Living		0	0.00%
	Other	5	2.84%	Unknown		0	0.00%
	TOTAL:	176	100.00%	TOTAL:		176	100.00%

Homelessness

Overall Summary

Funding Amount Awarded:	\$1,072,608.00
Funding Amount Expended:	\$1,046,695.18

Number to be Served:	822
Actual Number Served:	716

Agencies:	8
Programs:	12

Program Description

Proposals submitted in this category address outcomes and performance measures that demonstrate positive change toward the County's goal of ending homelessness. Preference was given to services that are in collaboration with the Senator Philip D. Lewis Center, serving as the central point of intake.

Program Participant Demographic Data

Category	Characteristic	#	%	Category	Characteristic	#	%
Gender	Female	498	69.55%	Age	17 and under	35	4.89%
	Male	218	30.45%		18 to 30	165	23.04%
	Unknown	0	0.00%		31 to 45	247	34.50%
	TOTAL:	716	100.00%		46 to 64	222	31.01%
Veteran	Yes	7	0.98%		65 and over	42	5.87%
	No	460	64.25%		Unknown	5	0.70%
	Unknown	249	34.78%		TOTAL:	716	100.00%
	TOTAL:	716	100.00%		Housing Arrangement	Homeless	131
Race	White	242	33.80%	Dependent Living		11	1.54%
	Black	409	57.12%	Foster Care		5	0.70%
	American Indian	0	0.00%	Independent Living		268	37.43%
	Asian Pacific Islander	2	0.28%	In An Institution		0	0.00%
	Alaskan	0	0.00%	Supportive Independent Living		184	25.70%
	Other	63	8.80%	Unknown		117	16.34%
	TOTAL:	716	100.00%	TOTAL:		716	100.00%

Adopt – A – Family

Housing Stabilization Program

Funding Amount Awarded:	\$138,834.00
Funding Amount Expended:	\$138,834.00

Number to be Served:	225
Actual Number Served:	145

Program Description

Program serves families earning less than 50% of the Area Median Income who are homeless or at imminent risk of becoming homeless. The program will provide financial assistance and comprehensive supportive services to prevent homelessness, or to rapidly re-house families residing in shelters or living in places not meant for human habitation.

Outcome Indicator

75% or 169 out of 225 families will remain stably housed for a minimum of 6 months following the date of initial financial assistance.

Actual Outcome Percentage Achieved

91.84%

Program Participant Demographic Data

Category	Characteristic	#	%	Category	Characteristic	#	%
Gender	Female	129	88.97%	Age	17 and under	1	0.69%
	Male	16	11.03%		18 to 30	40	27.59%
	Unknown	0	0.00%		31 to 45	70	48.28%
	TOTAL:	145	100.00%		46 to 64	32	22.07%
Veteran	Yes	3	2.07%		65 and over	1	0.69%
	No	139	95.86%		Unknown	1	0.69%
	Unknown	3	2.07%		TOTAL:	145	100.00%
	TOTAL:	145	100.00%	Housing Arrangement	Homeless	3	2.07%
Race	White	44	30.34%		Dependent Living	0	0.00%
	Black	94	64.83%		Foster Care	0	0.00%
	American Indian	0	0.00%		Independent Living	124	85.52%
	Asian Pacific Islander	0	0.00%		In An Institution	0	0.00%
	Alaskan	0	0.00%		Supportive Independent Living	6	4.14%
	Other	7	4.83%		Unknown	12	8.28%
	TOTAL:	145	100.00%		TOTAL:	145	100.00%

Adopt – A – Family

Program Reach

Funding Amount Awarded:	\$257,810.00
Funding Amount Expended:	\$257,810.00

Number to be Served:	80
Actual Number Served:	85

Program Description

Program provides emergency/interim housing and wraparound services for families with dependent children to help them return to self-sufficiency.

Outcome Indicator

70% or 56 of 80 clients served will enter permanent housing within 90 days from admission to the shelter.

Actual Outcome Percentage Achieved

68.24%

Program Participant Demographic Data

Category	Characteristic	#	%	Category	Characteristic	#	%
Gender	Female	82	96.47%	Age	17 and under	0	0.00%
	Male	3	3.53%		18 to 30	35	41.18%
	Unknown	0	0.00%		31 to 45	41	48.24%
	TOTAL:	85	100.00%		46 to 64	9	10.59%
Veteran	Yes	0	0.00%		65 and over	0	0.00%
	No	85	100.00%		Unknown	0	0.00%
	Unknown	0	0.00%		TOTAL:	85	100.00%
	TOTAL:	85	100.00%	Housing Arrangement	Homeless	7	8.24%
Race	White	17	20.00%		Dependent Living	0	0.00%
	Black	66	77.65%		Foster Care	0	0.00%
	American Indian	0	0.00%		Independent Living	26	30.59%
	Asian Pacific Islander	0	0.00%		In An Institution	0	0.00%
	Alaskan	0	0.00%		Supportive Independent Living	51	60.00%
	Other	2	2.35%		Unknown	1	1.18%
	TOTAL:	85	100.00%		TOTAL:	85	100.00%

Adopt – A – Family

Project SAFE

Funding Amount Awarded:	\$103,530.00
Funding Amount Expended:	\$103,530.00

Number to be Served:	32
Actual Number Served:	39

Program Description

Program provides permanent supportive housing to homeless families with documented disabilities. In addition to provision of affordable, permanent housing, supportive services such as case management, advocacy, budgeting, mental health counseling, access to education and job training, financial literacy, and childcare are also offered to families.

Outcome Indicator

90% or 29 out of 32 families will remain stably housed in permanent supportive housing or exit to permanent housing (subsidized or unsubsidized).

Actual Outcome Percentage Achieved

100.00%

Program Participant Demographic Data

Category	Characteristic	#	%	Category	Characteristic	#	%
Gender	Female	34	87.18%	Age	17 and under	0	0.00%
	Male	5	12.82%		18 to 30	13	33.33%
	Unknown	0	0.00%		31 to 45	19	48.72%
	TOTAL:	39	100.00%		46 to 64	7	17.95%
Veteran	Yes	0	0.00%		65 and over	0	0.00%
	No	39	100.00%		Unknown	0	0.00%
	Unknown	0	0.00%		TOTAL:	39	100.00%
	TOTAL:	39	100.00%		Housing Arrangement	Homeless	0
Race	White	14	35.90%	Dependent Living		0	0.00%
	Black	25	64.10%	Foster Care		0	0.00%
	American Indian	0	0.00%	Independent Living		11	28.21%
	Asian Pacific Islander	0	0.00%	In An Institution		0	0.00%
	Alaskan	0	0.00%	Supportive Independent Living		28	71.79%
	Other	0	0.00%	Unknown		0	0.00%
	TOTAL:	39	100.00%	TOTAL:		39	100.00%

Adopt – A – Family

Traveler's Aid

Funding Amount Awarded:	\$25,000.00
Funding Amount Expended:	\$7,753.08

Number to be Served:	80
Actual Number Served:	42

Program Description

Program returns families and individuals to their homes in order to avert homelessness. The program provides individuals with a Greyhound bus pass, returning them to their support system and helping to reduce the cost to the County.

Outcome Indicator

100% or 80 of 80 clients will receive a bus, train or airfare to return safely home to their support system.

Actual Outcome Percentage Achieved

100.00%

Program Participant Demographic Data

Category	Characteristic	#	%	Category	Characteristic	#	%
Gender	Female	29	69.05%	Age	17 and under	29	69.05%
	Male	13	30.95%		18 to 30	4	9.52%
	Unknown	0	0.00%		31 to 45	7	16.67%
	TOTAL:	42	100.00%		46 to 64	2	4.76%
Veteran	Yes	1	2.38%		65 and over	0	0.00%
	No	12	28.57%		Unknown	0	0.00%
	Unknown	29	69.05%		TOTAL:	42	100.00%
	TOTAL:	42	100.00%	Housing Arrangement	Homeless	42	100.00%
Race	White	9	21.43%		Dependent Living	0	0.00%
	Black	33	78.57%		Foster Care	0	0.00%
	American Indian	0	0.00%		Independent Living	0	0.00%
	Asian Pacific Islander	0	0.00%		In An Institution	0	0.00%
	Alaskan	0	0.00%		Supportive Independent Living	0	0.00%
	Other	0	0.00%		Unknown	0	0.00%
	TOTAL:	42	100.00%		TOTAL:	42	100.00%

Children's Case Management Organization / Families First

Bridges to Success

Funding Amount Awarded:	\$37,101.00
Funding Amount Expended:	\$37,101.00

Number to be Served:	10
Actual Number Served:	10

Program Description

Program is a community-based scattered site collaborative, which provides permanent supportive housing in the western communities of Royal Palm Beach, Belle Glade and Pahokee. All of the families served are referred through the Philip D Lewis Homeless Resource Center. Additional activities address basic needs, referral for medical or psychiatric care, employment skills and money management.

Outcome Indicator

80% or 8 of 10 families will maintain housing, from date of entry, for 6 months or longer.

Actual Outcome Percentage Achieved

100.00%

Program Participant Demographic Data

Category	Characteristic	#	%	Category	Characteristic	#	%
Gender	Female	8	80.00%	Age	17 and under	0	0.00%
	Male	2	20.00%		18 to 30	3	30.00%
	Unknown	0	0.00%		31 to 45	4	40.00%
	TOTAL:	10	100.00%		46 to 64	3	30.00%
Veteran	Yes	0	0.00%		65 and over	0	0.00%
	No	10	100.00%		Unknown	0	0.00%
	Unknown	0	0.00%		TOTAL:	10	100.00%
	TOTAL:	10	100.00%		Housing Arrangement	Homeless	0
Race	White	2	20.00%	Dependent Living		0	0.00%
	Black	8	80.00%	Foster Care		0	0.00%
	American Indian	0	0.00%	Independent Living		0	0.00%
	Asian Pacific Islander	0	0.00%	In An Institution		0	0.00%
	Alaskan	0	0.00%	Supportive Independent Living		10	100.00%
	Other	0	0.00%	Unknown		0	0.00%
	TOTAL:	10	100.00%	TOTAL:		10	100.00%

Children's Home Society

Transitions Home

Funding Amount Awarded:	\$36,374.00
Funding Amount Expended:	\$36,374.00

Number to be Served:	14
Actual Number Served:	13

Program Description

Program provides transitional housing and support services to young homeless mothers so they have an opportunity to mature into young adulthood, have a productive future, and escape the cycle of homelessness.

Outcome Indicator

80% or 11 of 14 teen mothers in Transitions Home for at least 3 months will improve and/or maintain their basic life skills, as measured by scores on assessments.

Actual Outcome Percentage Achieved

91.67%

Program Participant Demographic Data

Category	Characteristic	#	%	Category	Characteristic	#	%
Gender	Female	13	100.00%	Age	17 and under	5	38.46%
	Male	0	0.00%		18 to 30	8	61.54%
	Unknown	0	0.00%		31 to 45	0	0.00%
	TOTAL:	13	100.00%		46 to 64	0	0.00%
Veteran	Yes	0	0.00%		65 and over	0	0.00%
	No	7	53.85%		Unknown	0	0.00%
	Unknown	6	46.15%		TOTAL:	13	100.00%
	TOTAL:	13	100.00%		Housing Arrangement	Homeless	0
Race	White	3	23.08%	Dependent Living		8	61.54%
	Black	10	76.92%	Foster Care		5	38.46%
	American Indian	0	0.00%	Independent Living		0	0.00%
	Asian Pacific Islander	0	0.00%	In An Institution		0	0.00%
	Alaskan	0	0.00%	Supportive Independent Living		0	0.00%
	Other	0	0.00%	Unknown		0	0.00%
	TOTAL:	13	100.00%	TOTAL:		13	100.00%

Gulfstream Goodwill Industries

Homeless Residential Employment Services

Funding Amount Awarded:	\$46,348.00
Funding Amount Expended:	\$46,348.00

Number to be Served:	30
Actual Number Served:	21

Program Description

Program provides Employment Readiness Training, Job Development, and Placement and Follow-along services. Enrollment in the program is open to individuals residing in and receiving services from Goodwill's Homeless Residential Program.

Outcome Indicator

50% or 15 of 30 participants will obtain Employment Readiness Skills Training Certification.

Actual Outcome Percentage Achieved

52.17%

Program Participant Demographic Data

Category	Characteristic	#	%	Category	Characteristic	#	%
Gender	Female	3	14.29%	Age	17 and under	0	0.00%
	Male	18	85.71%		18 to 30	3	14.29%
	Unknown	0	0.00%		31 to 45	4	19.05%
	TOTAL:	21	100.00%		46 to 64	13	61.90%
Veteran	Yes	1	4.76%		65 and over	1	4.76%
	No	20	95.24%		Unknown	0	0.00%
	Unknown	0	0.00%	TOTAL:	21	100.00%	
	TOTAL:	21	100.00%	Housing Arrangement	Homeless	0	0.00%
Race	White	11	52.38%		Dependent Living	1	4.76%
	Black	10	47.62%		Foster Care	0	0.00%
	American Indian	0	0.00%		Independent Living	0	0.00%
	Asian Pacific Islander	0	0.00%		In An Institution	0	0.00%
	Alaskan	0	0.00%		Supportive Independent Living	0	0.00%
	Other	0	0.00%		Unknown	20	95.24%
	TOTAL:	21	100.00%		TOTAL:	21	100.00%

Gulfstream Goodwill Industries

Traveler's Aid

Funding Amount Awarded:	\$25,000.00
Funding Amount Expended:	\$16,334.10

Number to be Served:	100
Actual Number Served:	73

Program Description

Program provides individuals with a Greyhound bus pass, returning them to their support system and helping to reduce the cost to the County.

Outcome Indicator

100% or 100 of 100 assessed individuals will receive Traveler's Aide and complete a success transition to a safe and stable environment with family or other natural supports.

Actual Outcome Percentage Achieved

100.00%

Program Participant Demographic Data

Category	Characteristic	#	%	Category	Characteristic	#	%
Gender	Female	31	42.47%	Age	17 and under	0	0.00%
	Male	42	57.53%		18 to 30	22	30.14%
	Unknown	0	0.00%		31 to 45	26	35.62%
	TOTAL:	73	100.00%		46 to 64	20	27.40%
Veteran	Yes	1	1.37%		65 and over	1	1.37%
	No	67	91.78%		Unknown	4	5.48%
	Unknown	5	6.85%		TOTAL:	73	100.00%
	TOTAL:	73	100.00%		Housing Arrangement	Homeless	73
Race	White	41	56.16%	Dependent Living		0	0.00%
	Black	28	38.36%	Foster Care		0	0.00%
	American Indian	0	0.00%	Independent Living		0	0.00%
	Asian Pacific Islander	0	0.00%	In An Institution		0	0.00%
	Alaskan	0	0.00%	Supportive Independent Living		0	0.00%
	Other	4	5.48%	Unknown		0	0.00%
	TOTAL:	73	100.00%	TOTAL:		73	100.00%

Legal Aid Society

Homeless Legal Prevention Project

Funding Amount Awarded:	\$30,450.00
Funding Amount Expended:	\$30,450.00

Number to be Served:	95
Actual Number Served:	165

Program Description

Program provides low-income families at risk of homelessness with direct legal services and educational outreach activities aimed at helping individuals and families in danger of eviction maintain their existing housing or transition to new permanent housing.

Outcome Indicator

74% or 70 of 95 individuals will avoid immediate eviction.

Actual Outcome Percentage Achieved

90.18%

Program Participant Demographic Data

Category	Characteristic	#	%	Category	Characteristic	#	%
Gender	Female	120	72.73%	Age	17 and under	0	0.00%
	Male	45	27.27%		18 to 30	18	10.91%
	Unknown	0	0.00%		31 to 45	42	25.45%
	TOTAL:	165	100.00%		46 to 64	72	43.64%
Veteran	Yes	1	0.61%		65 and over	33	20.00%
	No	0	0.00%		Unknown	0	0.00%
	Unknown	164	99.39%		TOTAL:	165	100.00%
	TOTAL:	165	100.00%		Housing Arrangement	Homeless	4
Race	White	55	33.33%	Dependent Living		2	1.21%
	Black	82	49.70%	Foster Care		0	0.00%
	American Indian	0	0.00%	Independent Living		83	50.30%
	Asian Pacific Islander	2	1.21%	In An Institution		0	0.00%
	Alaskan	0	0.00%	Supportive Independent Living		0	0.00%
	Other	26	15.76%	Unknown		76	46.06%
	TOTAL:	165	100.00%	TOTAL:		165	100.00%

Palm Beach Habilitation Center

Supported Employment

Funding Amount Awarded:	\$67,113.00
Funding Amount Expended:	\$67,113.00

Number to be Served:	40
Actual Number Served:	42

Program Description

Program assists individuals with significant disabilities who are the sole or primary source of income to maintain competitive community employment. Participants receive assistance in developing and implementing a budget, which assures their basic living needs are being met and prevents them from becoming homeless.

Outcome Indicator

80% or 32 of 40 participants will be able to maintain their community-based living situation.

Actual Outcome Percentage Achieved

92.86%

Program Participant Demographic Data

Category	Characteristic	#	%	Category	Characteristic	#	%
Gender	Female	14	33.33%	Age	17 and under	0	0.00%
	Male	28	66.67%		18 to 30	4	9.52%
	Unknown	0	0.00%		31 to 45	8	19.05%
	TOTAL:	42	100.00%		46 to 64	26	61.90%
Veteran	Yes	0	0.00%		65 and over	4	9.52%
	No	0	0.00%		Unknown	0	0.00%
	Unknown	42	100.00%		TOTAL:	42	100.00%
	TOTAL:	42	100.00%		Housing Arrangement	Homeless	0
Race	White	5	11.90%	Dependent Living		0	0.00%
	Black	14	33.33%	Foster Care		0	0.00%
	American Indian	0	0.00%	Independent Living		13	30.95%
	Asian Pacific Islander	0	0.00%	In An Institution		0	0.00%
	Alaskan	0	0.00%	Supportive Independent Living		29	69.05%
	Other	23	54.76%	Unknown		0	0.00%
	TOTAL:	42	100.00%	TOTAL:		42	100.00%

The Lord's Place

Permanent Supportive Housing Programs

Funding Amount Awarded:	\$234,372.00
Funding Amount Expended:	\$234,372.00

Number to be Served:	80
Actual Number Served:	64

Program Description

Programs offer weekly case management meetings, counseling, life skill classes and other services to combat intergenerational homelessness and prevent future homelessness by providing solution-focused housing in which each household receives the necessary time and tools to rebuild lives on an individualized, case by case basis.

Outcome Indicator

80% or 64 of 80 households will remain stably housed in their apartments for more than 180 days.

Actual Outcome Percentage Achieved

93.65%

Program Participant Demographic Data

Category	Characteristic	#	%	Category	Characteristic	#	%
Gender	Female	18	58.06%	Age	17 and under	0	0.00%
	Male	13	41.94%		18 to 30	0	0.00%
	Unknown	0	0.00%		31 to 45	0	0.00%
	TOTAL:	31	100.00%		46 to 64	17	54.84%
Veteran	Yes	0	0.00%		65 and over	14	45.16%
	No	25	80.65%		Unknown	0	0.00%
	Unknown	6	19.35%		TOTAL:	31	100.00%
	TOTAL:	31	100.00%		Housing Arrangement	Homeless	0
Race	White	8	25.81%	Dependent Living		28	90.32%
	Black	4	12.90%	Foster Care		0	0.00%
	American Indian	0	0.00%	Independent Living		0	0.00%
	Asian Pacific Islander	0	0.00%	In An Institution		1	3.23%
	Alaskan	0	0.00%	Supportive Independent Living		2	6.45%
	Other	19	61.29%	Unknown		0	0.00%
	TOTAL:	31	100.00%	TOTAL:		31	100.00%

Program Highlights

Natalie and her two young sons recently moved from our Family Campus into their own apartment. While in our program, Natalie gained and maintained employment, participated in therapeutic services, earned a high school diploma and post-secondary childcare certificate, and secured Section 8 housing. Natalie recently shared that this is the proudest time of her life because she achieved her ultimate goal: to end her family's homelessness and stabilize their lives. She says although it may have taken her several years, she never lost focus on what she could do once she put her mind to it.

The Salvation Army

Center of Hope

Funding Amount Awarded:	\$70,676.00
Funding Amount Expended:	\$70,676.00

Number to be Served:	36
Actual Number Served:	17

Program Description

Program provides transitional housing and case management services for a period of up to 24 months. Case Managers work with each resident on an individualized case plan with goal obtaining increased income and permanent housing in the community.

Outcome Indicator

75% or 21 of 36 residents will discharge to permanent housing (subsidized and non-subsidized) as defined by HUD.

Actual Outcome Percentage Achieved

85.71%

Program Participant Demographic Data

Category	Characteristic	#	%	Category	Characteristic	#	%
Gender	Female	0	0.00%	Age	17 and under	0	0.00%
	Male	17	100.00%		18 to 30	1	5.88%
	Unknown	0	0.00%		31 to 45	4	23.53%
	TOTAL:	17	100.00%		46 to 64	12	70.59%
Veteran	Yes	0	0.00%		65 and over	0	0.00%
	No	17	100.00%		Unknown	0	0.00%
	Unknown	0	0.00%		TOTAL:	17	100.00%
	TOTAL:	17	100.00%		Housing Arrangement	Homeless	2
Race	White	11	64.71%	Dependent Living		0	0.00%
	Black	6	35.29%	Foster Care		0	0.00%
	American Indian	0	0.00%	Independent Living		11	64.71%
	Asian Pacific Islander	0	0.00%	In An Institution		0	0.00%
	Alaskan	0	0.00%	Supportive Independent Living		1	5.88%
	Other	0	0.00%	Unknown		3	17.65%
	TOTAL:	17	100.00%	TOTAL:		17	100.00%

Economic Stability / Poverty

Overall Summary

Funding Amount Awarded:	\$685,008.00
Funding Amount Expended:	\$683,872.70

Number to be Served:	6,366
Actual Number Served:	11,106*

Agencies:	9
Programs:	9

Program Description

Programs and services in this category address outcomes and performance measures that demonstrate positive change toward self-sufficiency and economic stability through the provision of self-sufficiency programs increasing earned income and reducing dependency, short term financial assistance, including for emergency, housing, utility expenses, and educational opportunities including job training and job readiness.

Program Participant Demographic Data

Category	Characteristic	#	%	Category	Characteristic	#	%
Gender	Female	450	47.62%	Age	17 and under	3	0.32%
	Male	494	52.28%		18 to 30	203	21.48%
	Unknown	1	0.11%		31 to 45	418	44.23%
	TOTAL:	945	100.00%		46 to 64	257	27.20%
Veteran	Yes	2	0.21%		65 and over	64	6.77%
	No	389	41.16%		Unknown	0	0.00%
	Unknown	554	58.62%		TOTAL:	945	100.00%
	TOTAL:	945	100.00%		Housing Arrangement	Homeless	13
Race	White	108	11.43%	Dependent Living		112	11.85%
	Black	267	28.25%	Foster Care		0	0.00%
	American Indian	0	0.00%	Independent Living		654	69.21%
	Asian Pacific Islander	0	0.00%	In An Institution		1	0.11%
	Alaskan	0	0.00%	Supportive Independent Living		18	1.90%
	Other	570	60.32%	Unknown		147	15.56%
	TOTAL:	945	100.00%	TOTAL:		945	100.00%

* Of the 11,106 participants reported to be served, 945 submitted demographic information.

Adopt – A – Family

Service Enriched Housing

Funding Amount Awarded:	\$62,118.00
Funding Amount Expended:	\$62,118.00

Number to be Served:	30
Actual Number Served:	30

Program Description

Affordable housing program for low-income families with children who cannot afford fair market rent but are disqualified from traditional assistance programs because of their income. Program provides a path to long-term stability through affordable housing, financial literacy training, and a unique rent structure that allows residents to save a portion of their monthly rent payment in an escrow account.

Outcome Indicator

70% or 21 of 30 families will improve their attitudes regarding the importance of savings as evidenced by improved scores on Success Measures surveys AND/OR depositing at least \$150 into escrow accounts each quarter.

Actual Outcome Percentage Achieved

68.84%

Program Participant Demographic Data

Category	Characteristic	#	%	Category	Characteristic	#	%
Gender	Female	29	96.67%	Age	17 and under	0	0.00%
	Male	1	3.33%		18 to 30	3	10.00%
	Unknown	0	0.00%		31 to 45	23	76.67%
	TOTAL:	30	100.00%		46 to 64	4	13.33%
Veteran	Yes	1	3.33%		65 and over	0	0.00%
	No	29	96.67%		Unknown	0	0.00%
	Unknown	0	0.00%		TOTAL:	30	100.00%
	TOTAL:	30	100.00%		Housing Arrangement	Homeless	0
Race	White	6	20.00%	Dependent Living		0	0.00%
	Black	24	80.00%	Foster Care		0	0.00%
	American Indian	0	0.00%	Independent Living		0	0.00%
	Asian Pacific Islander	0	0.00%	In An Institution		0	0.00%
	Alaskan	0	0.00%	Supportive Independent Living		0	0.00%
	Other	0	0.00%	Unknown		30	100.00%
	TOTAL:	30	100.00%	TOTAL:		30	100.00%

Children's Case Management Organization / Families First

Kin Support

Funding Amount Awarded:	\$90,106.00
Funding Amount Expended:	\$88,970.70

Number to be Served:	42
Actual Number Served:	56

Program Description

Program staff provide kinship care families, which include grandparents who are raising children, with supportive counseling in the home and through groups regarding the challenges of family living as well as assisting relative caregivers to successfully link with health and human services and resources.

Outcome Indicator

84% of 35 of 42 kinship families will remain stable and intact (children not removed & placed in foster care) during the contract year.

Actual Outcome Percentage Achieved

98.21%

Program Participant Demographic Data

Category	Characteristic	#	%	Category	Characteristic	#	%
Gender	Female	54	96.43%	Age	17 and under	0	0.00%
	Male	2	3.57%		18 to 30	2	3.57%
	Unknown	0	0.00%		31 to 45	13	23.21%
	TOTAL:	56	100.00%		46 to 64	28	50.00%
Veteran	Yes	0	0.00%		65 and over	13	23.21%
	No	56	100.00%		Unknown	0	0.00%
	Unknown	0	0.00%		TOTAL:	56	100.00%
	TOTAL:	56	100.00%	Housing Arrangement	Homeless	1	1.79%
Race	White	17	30.36%		Dependent Living	0	0.00%
	Black	38	67.86%		Foster Care	0	0.00%
	American Indian	0	0.00%		Independent Living	42	75.00%
	Asian Pacific Islander	0	0.00%		In An Institution	0	0.00%
	Alaskan	0	0.00%		Supportive Independent Living	13	23.21%
	Other	1	1.79%		Unknown	0	0.00%
	TOTAL:	56	100.00%		TOTAL:	56	100.00%

El Sol, JNRC

Worker Development Project

Funding Amount Awarded:	\$55,034.00
Funding Amount Expended:	\$55,034.00

Number to be Served:	400
Actual Number Served:	387

Program Description

Program seeks to bridge the gaps in employment that undermine the financial stability of day laborers in Jupiter, Florida.

Outcome Indicator

60% or 240 of 400 clients will improve progress towards self-sufficiency as demonstrated through an increased overall score on the El Sol Self-Sufficiency matrix.

Actual Outcome Percentage Achieved

43.08%

Program Participant Demographic Data

Category	Characteristic	#	%	Category	Characteristic	#	%
Gender	Female	93	24.03%	Age	17 and under	2	0.52%
	Male	294	75.97%		18 to 30	122	31.52%
	Unknown	0	0.00%		31 to 45	153	39.53%
	TOTAL:	387	100.00%		46 to 64	102	26.36%
Veteran	Yes	1	0.26%		65 and over	8	2.07%
	No	211	54.52%		Unknown	0	0.00%
	Unknown	175	45.22%		TOTAL:	387	100.00%
	TOTAL:	387	100.00%		Housing Arrangement	Homeless	2
Race	White	47	12.14%	Dependent Living		2	0.52%
	Black	1	0.26%	Foster Care		0	0.00%
	American Indian	0	0.00%	Independent Living		266	68.73%
	Asian Pacific Islander	0	0.00%	In An Institution		0	0.00%
	Alaskan	0	0.00%	Supportive Independent Living		1	0.26%
	Other	339	87.60%	Unknown		116	29.97%
	TOTAL:	387	100.00%	TOTAL:		387	100.00%

Farmworker's Coordinating Council

Family Preservation and Economic Stabilization

Funding Amount Awarded:	\$155,653.00
Funding Amount Expended:	\$155,653.00

Number to be Served:	325
Actual Number Served:	342

Program Description

Program provides migrant and seasonal Farmworkers with comprehensive human and social services with the goal of helping these families meet their basic needs and improve their economic outcomes.

Outcome Indicator

80% or 260 of 325 families will increase their scores on the Self-Sufficiency Matrix.

Actual Outcome Percentage Achieved

50.30%

Program Participant Demographic Data

Category	Characteristic	#	%	Category	Characteristic	#	%
Gender	Female	190	55.56%	Age	17 and under	0	0.00%
	Male	151	44.15%		18 to 30	51	14.91%
	Unknown	1	0.29%		31 to 45	178	52.05%
	TOTAL:	342	100.00%		46 to 64	88	25.73%
Veteran	Yes	0	0.00%		65 and over	25	7.31%
	No	0	0.00%		Unknown	0	0.00%
	Unknown	342	100.00%		TOTAL:	342	100.00%
	TOTAL:	342	100.00%	Housing Arrangement	Homeless	1	0.29%
Race	White	2	0.58%		Dependent Living	85	24.85%
	Black	122	35.67%		Foster Care	0	0.00%
	American Indian	0	0.00%		Independent Living	255	74.56%
	Asian Pacific Islander	0	0.00%		In An Institution	1	0.29%
	Alaskan	0	0.00%		Supportive Independent Living	0	0.00%
	Other	218	63.74%		Unknown	0	0.00%
	TOTAL:	342	100.00%		TOTAL:	342	100.00%

Habilitation Center for the Handicapped

Hab Center's Plant Nursery

Funding Amount Awarded:	\$20,000.00
Funding Amount Expended:	\$20,000.00

Number to be Served:	10
Actual Number Served:	12

Program Description

Program provides a day curriculum with long-term work development training and paid opportunity to help significantly challenged adults with disabilities earn income and live fulfilling lives through its Plant Nursery.

Outcome Indicator

80% or 8 of 10 clients will increase knowledge as demonstrated by marked improvement in understanding personal banking information, how to budget and save, and paying bills.

Actual Outcome Percentage Achieved
100.00%

<u>Program Participant Demographic Data</u>							
Category	Characteristic	#	%	Category	Characteristic	#	%
Gender	Female	0	0.00%	Age	17 and under	0	0.00%
	Male	12	100.00%		18 to 30	3	25.00%
	Unknown	0	0.00%		31 to 45	7	58.33%
	TOTAL:	12	100.00%		46 to 64	2	16.67%
Veteran	Yes	0	0.00%		65 and over	0	0.00%
	No	12	100.00%		Unknown	0	0.00%
	Unknown	0	0.00%		TOTAL:	12	100.00%
	TOTAL:	12	100.00%		Housing Arrangement	Homeless	0
Race	White	0	0.00%	Dependent Living		7	58.33%
	Black	4	33.33%	Foster Care		0	0.00%
	American Indian	0	0.00%	Independent Living		1	8.33%
	Asian Pacific Islander	0	0.00%	In An Institution		0	0.00%
	Alaskan	0	0.00%	Supportive Independent Living		3	25.00%
	Other	8	66.67%	Unknown		1	8.33%
	TOTAL:	12	100.00%	TOTAL:		12	100.00%

Program Highlights

Walter Burks has been working at the HabCenter for almost 13 years. While here, Walter focused on improving his vocational and financial management skills. After participating in financial management workshops this past year as part of the Financially Assisted Agencies (FAA) program, Walter demonstrated a marked improvement in understanding personal financial literacy. He has since achieved one of his financial goals of moving to independent housing and maintaining a monthly budget with wages he earns from his job. When asked what his goals are, he mentioned that he wants to go back to college and earn a degree.

Pathways to Prosperity

CIRCLES Palm Beach County

Funding Amount Awarded:	\$75,000.00
Funding Amount Expended:	\$75,000.00

Number to be Served:	30
Actual Number Served:	30

Program Description

Program is a community engagement initiative that focuses on moving families out of poverty. The goals are to engage the community, help put an end to poverty, and create relationships across economic and class lines that can facilitate in moving participants into self-sufficiency.

Outcome Indicator

70% or 21 of 30 Circle Leaders will improve their condition as evidenced by an increase in baseline self-sufficiency score upon program exit.

Actual Outcome Percentage Achieved

40.00%

Program Participant Demographic Data

Category	Characteristic	#	%	Category	Characteristic	#	%
Gender	Female	27	90.00%	Age	17 and under	0	0.00%
	Male	3	10.00%		18 to 30	13	43.33%
	Unknown	0	0.00%		31 to 45	17	56.67%
	TOTAL:	30	100.00%		46 to 64	0	0.00%
Veteran	Yes	0	0.00%		65 and over	0	0.00%
	No	3	10.00%		Unknown	0	0.00%
	Unknown	27	90.00%	TOTAL:	30	100.00%	
	TOTAL:	30	100.00%	Housing Arrangement	Homeless	0	0.00%
Race	White	1	3.33%		Dependent Living	5	16.67%
	Black	27	90.00%		Foster Care	0	0.00%
	American Indian	0	0.00%		Independent Living	25	83.33%
	Asian Pacific Islander	2	6.67%		In An Institution	0	0.00%
	Alaskan	0	0.00%		Supportive Independent Living	0	0.00%
	Other	0	0.00%		Unknown	0	0.00%
	TOTAL:	30	100.00%		TOTAL:	30	100.00%

Program Highlights

Brianica joined the Circles program struggling with financial discipline, self-esteem issues because of her weight, and no drive to resume her education. To date, Brianica has taken the strategies and guidance that she got from Circles and has made huge strides in all the areas that she struggled with prior. She has set educational and financial goals and she has learned to monitor her monthly budget and track her spending. Along with her determination, her new skills will lead her to gradual and stable financial growth and more importantly, self-sufficiency.

The Glade's Initiative

Connecting the Glades

Funding Amount Awarded:	\$152,250.00
Funding Amount Expended:	\$152,250.00

Number to be Served:	30
Actual Number Served:	52

Program Description

Program will increase the financial stability of families with increased access to health care coverage and availability of healthy, affordable food for low-income, food insecure children and families in the Glades, Medicaid enrollment assistance, and the Cooking Matters™ Nutrition Education Program teaching families how to prepare healthy meals on a tight budget.

Outcome Indicator

80% or 24 of 30 clients will increase knowledge based on an increased score on financial literacy pre/post tests.

Actual Outcome Percentage Achieved

100.00%

Program Participant Demographic Data

Category	Characteristic	#	%	Category	Characteristic	#	%
Gender	Female	37	71.15%	Age	17 and under	1	1.92%
	Male	15	28.85%		18 to 30	2	3.85%
	Unknown	0	0.00%		31 to 45	13	25.00%
	TOTAL:	52	100.00%		46 to 64	18	34.62%
Veteran	Yes	0	0.00%		65 and over	18	34.62%
	No	52	100.00%		Unknown	0	0.00%
	Unknown	0	0.00%		TOTAL:	52	100.00%
	TOTAL:	52	100.00%		Housing Arrangement	Homeless	0
Race	White	24	46.15%	Dependent Living		0	0.00%
	Black	28	53.85%	Foster Care		0	0.00%
	American Indian	0	0.00%	Independent Living		52	100.00%
	Asian Pacific Islander	0	0.00%	In An Institution		0	0.00%
	Alaskan	0	0.00%	Supportive Independent Living		0	0.00%
	Other	0	0.00%	Unknown		0	0.00%
	TOTAL:	52	100.00%	TOTAL:		52	100.00%

The Lord's Place

Café Joshua

Funding Amount Awarded:	\$50,000.00
Funding Amount Expended:	\$50,000.00

Number to be Served:	20
Actual Number Served:	36

Program Description

Program provides comprehensive employment services to homeless, formerly homeless and low-income Palm Beach County residents with barriers to employment that impede their work readiness and threaten their economic self-sufficiency.

Outcome Indicator

40% or 8 of 20 participants will maintain employment for a minimum of 90 days.

Actual Outcome Percentage Achieved

100.00%

Program Participant Demographic Data

Category	Characteristic	#	%	Category	Characteristic	#	%
Gender	Female	20	55.56%	Age	17 and under	0	0.00%
	Male	16	44.44%		18 to 30	7	19.44%
	Unknown	0	0.00%		31 to 45	14	38.89%
	TOTAL:	36	100.00%		46 to 64	15	41.67%
Veteran	Yes	0	0.00%		65 and over	0	0.00%
	No	26	72.22%		Unknown	0	0.00%
	Unknown	10	27.78%		TOTAL:	36	100.00%
	TOTAL:	36	100.00%		Housing Arrangement	Homeless	9
Race	White	11	30.56%	Dependent Living		13	36.11%
	Black	23	63.89%	Foster Care		0	0.00%
	American Indian	0	0.00%	Independent Living		13	36.11%
	Asian Pacific Islander	0	0.00%	In An Institution		0	0.00%
	Alaskan	0	0.00%	Supportive Independent Living		1	2.78%
	Other	2	5.56%	Unknown		0	0.00%
	TOTAL:	36	100.00%	TOTAL:		36	100.00%

United Way of Palm Beach County

Volunteer Income Tax Assistance (VITA) Program

Funding Amount Awarded:	\$24,847.00
Funding Amount Expended:	\$24,847.00

Number to be Served:	5,479
Actual Number Served:	10,161

Program Description

Program seeks to improve the economic well-being and financial stability of Palm Beach County's low income households while protecting the most vulnerable populations (e.g. seniors, disabled, and English- language learners) through increased awareness of the Earned Income Tax Credit and by offering free tax preparation services to residents with an annual household income of \$63,000 or less.

Program Highlights

- Outcome Achievements:
 - 10,161 tax returns were prepared providing \$16.1 million in refunds;
 - \$5.8 million of which is attributable to the Earned Income Tax Credit.
 - \$1.5 million were saved in tax preparation services
- 3% increase in the number of tax returns prepared in the previous year.
- 160 volunteers recruited, trained, and deployed.
- Volunteers provided 8,398 hours of service, which equates to \$182,000 in kind value.
- 15 fixed sites and an additional 15 mobile sites provided countywide.
- Of the \$16.1 million acquired in refunds, \$2.2 million was due to Child Tax Credits.
- The overall Economic Impact of the VITA program equates to \$24 million.

Senior Services

Overall Summary

Funding Amount Awarded:	\$788,187.00
Funding Amount Expended:	\$744,792.00

Number to be Served:	2,985
Actual Number Served:	2,948

Agencies:	5
Programs:	6

Program Description

Programs and services in this category address outcomes and performance measures that work to ensure seniors remain in the community and avoid becoming institutionalized in a nursing home setting through programs to reduce isolation and increase socialization, and/or provide short-term case management, in-home services, and caregiver counseling & training services.

Program Participant Demographic Data

Category	Characteristic	#	%	Category	Characteristic	#	%
Gender	Female	2050	69.54%	Age	17 and under	2	0.07%
	Male	895	30.36%		18 to 30	4	0.14%
	Unknown	3	0.10%		31 to 45	1	0.03%
	TOTAL:	2948	100.00%		46 to 64	153	5.19%
Veteran	Yes	248	8.41%		65 and over	2785	94.47%
	No	1544	52.37%		Unknown	3	0.10%
	Unknown	1156	39.21%		TOTAL:	2948	100.00%
	TOTAL:	2948	100.00%		Housing Arrangement	Homeless	4
Race	White	806	27.34%	Dependent Living		408	13.84%
	Black	275	9.33%	Foster Care		0	0.00%
	American Indian	3	0.10%	Independent Living		938	31.82%
	Asian Pacific Islander	8	0.27%	In An Institution		3	0.10%
	Alaskan	0	0.00%	Supportive Independent Living		2	0.07%
	Other	1856	62.96%	Unknown		1593	54.04%
	TOTAL:	2948	100.00%	TOTAL:		2948	100.00%

211 Palm Beach / Treasure Coast

Elder Crisis Outreach Program

Funding Amount Awarded:	\$38,558.00
Funding Amount Expended:	\$38,558.00

Number to be Served:	450
Actual Number Served:	632

Program Description

Program provides telephone and in-home counseling, suicide evaluation, service referrals, advocacy, screening and enrollment support for basic needs and health care benefits.

Outcome Indicator

75% or 338 of 450 elders served will have their crisis resolved or stabilized.

Actual Outcome Percentage Achieved

79.83%

Program Participant Demographic Data

Category	Characteristic	#	%	Category	Characteristic	#	%
Gender	Female	432	68.35%	Age	17 and under	1	0.16%
	Male	200	31.65%		18 to 30	2	0.32%
	Other	0	0.00%		31 to 45	1	0.16%
	TOTAL:	632	100.00%		46 to 64	85	13.45%
Veteran	Yes	60	9.49%		65 and over	540	85.44%
	No	420	66.46%		Unknown	3	0.47%
	Unknown	152	24.05%	TOTAL:	632	100.00%	
	TOTAL:	632	100.00%	Housing Arrangement	Homeless	3	0.47%
Race	White	519	82.12%		Dependent Living	1	0.16%
	Black	95	15.03%		Foster Care	0	0.00%
	American Indian	2	0.32%		Independent Living	624	98.73%
	Asian Pacific Islander	6	0.95%		In An Institution	2	0.32%
	Alaskan	0	0.00%		Supportive Independent Living	1	0.16%
	Other	10	1.58%		Unknown	1	0.16%
	TOTAL:	632	100.00%		TOTAL:	632	100.00%

Program Highlights

72-year old male called because he did not have any food or extra money. The client was given canned food from the food pantry and a \$10 Walmart gift card. Staff assisted him with a food stamp application and he was approved. His light bill and HOA fees were also past due but The Volen Center and Care Ministry paid both fees. The client's air conditioner also stopped working and he was referred to, and approved by a weatherization program through Centro Campesino Farmworker Center. The client is now up to date on everything and he has enough money again to pay his other expenses thanks to additional assistance from his food stamps. He was very thankful to 211 for assisting him with all his needs and allowing him to stabilize his home situation.

Alzheimer's Community Care

Family Nurse Consultant

Funding Amount Awarded:	\$341,649.00
Funding Amount Expended:	\$341,649.00

Number to be Served:	501
Actual Number Served:	271

Program Description

Program provides dementia-specific support and wrap-around services, guidance, and direction for caregivers and family members of patients with Alzheimer's disease and related disorders.

Outcome Indicator

68% or 341 of 501 caregivers who complete an annual reassessment will indicate stable or improved likelihood of continuing to provide home-based care.

Actual Outcome Percentage Achieved
95.62%

Program Participant Demographic Data

Category	Characteristic	#	%	Category	Characteristic	#	%
Gender	Female	187	69.00%	Age	17 and under	0	0.00%
	Male	84	31.00%		18 to 30	1	0.37%
	Unknown	0	0.00%		31 to 45	0	0.00%
	TOTAL:	271	100.00%		46 to 64	15	5.54%
Veteran	Yes	3	1.11%		65 and over	255	94.10%
	No	19	7.01%		Unknown	0	0.00%
	Unknown	249	91.88%	TOTAL:	271	100.00%	
	TOTAL:	271	100.00%	Housing Arrangement	Homeless	0	0.00%
Race	White	72	26.57%		Dependent Living	201	74.17%
	Black	74	27.31%		Foster Care	0	0.00%
	American Indian	0	0.00%		Independent Living	69	25.46%
	Asian Pacific Islander	5	1.85%		In An Institution	0	0.00%
	Alaskan	0	0.00%		Supportive Independent Living	0	0.00%
	Other	120	44.28%		Unknown	1	0.37%
	TOTAL:	271	100.00%		TOTAL:	271	100.00%

Alzheimer's Community Care

Specialized Alzheimer's Adult Day Services

Funding Amount Awarded:	\$201,884.00
Funding Amount Expended:	\$182,821.50

Number to be Served:	137
Actual Number Served:	272

Program Description

Program is a community-based, dementia-specific service of therapeutic, social, recreational, and health activities provided for patients with Alzheimer's disease and related disorders.

Outcome Indicator

80% or 110 of 137 patients enrolled in Day Care will delay or eliminate the need for nursing home placement at time of program exit and patients will be maintained in the community.

Actual Outcome Percentage Achieved

94.16%

Program Participant Demographic Data

Category	Characteristic	#	%	Category	Characteristic	#	%	
Gender	Female	188	69.12%	Age	17 and under	1	0.37%	
	Male	84	30.88%		18 to 30	1	0.37%	
	Unknown	0	0.00%		31 to 45	0	0.00%	
	TOTAL:	272	100.00%		46 to 64	15	5.51%	
Veteran	Yes	2	0.74%		65 and over	255	93.75%	
	No	19	6.99%		Unknown	0	0.00%	
	Unknown	251	92.28%		TOTAL:	272	100.00%	
	TOTAL:	272	100.00%		Housing Arrangement	Homeless	1	0.37%
Race	White	71	26.10%			Dependent Living	198	72.79%
	Black	77	28.31%			Foster Care	0	0.00%
	American Indian	0	0.00%	Independent Living		73	26.84%	
	Asian Pacific Islander	5	1.84%	In An Institution		0	0.00%	
	Alaskan	0	0.00%	Supportive Independent Living		0	0.00%	
	Other	119	43.75%	Unknown		0	0.00%	
	TOTAL:	272	100.00%	TOTAL:		272	100.00%	

Program Highlights

Recently, a caregiver, daughter of our day center patient, realized that her mother is in the late stage of neurocognitive decline. Periodically, the patient would become unresponsive and 9-1-1 would be called. The daughter expressed her preference that 9-1-1 not be called in such situations. I explained the services that hospice can provide, and that in the context of a hospice plan of care, alternate arrangements can be made for such situations. The daughter promptly consulted with hospice; she is now very pleased that there is a concerted team approach to the care her mother needs at this stage.

Gulfstream Goodwill Industries

Assistive Communication Services

Funding Amount Awarded:	\$86,096.00
Funding Amount Expended:	\$73,268.50

Number to be Served:	150 clients & 240 sessions
Actual Number Served:	160 clients & 15 sessions

Program Description

Program provides special amplified telephones and other assistive equipment, including related testing, training and demonstration, at no charge, to individuals who have a certified hearing loss or speech impairment.

Outcome Indicator

85% or 128 of 150 residents over the age of 60 will have an increased knowledge of hearing conditions AND/OR
85% or 204 of 240 sessions for residents who have been refused an interpreter, and require one, will have an improved condition as evidenced by access to services and/or information.

Actual Outcome Percentage Achieved

91.88%
AND
100.00%

Program Participant Demographic Data

Category	Characteristic	#	%	Category	Characteristic	#	%
Gender	Female	111	63.43%	Age	17 and under	0	0.00%
	Male	64	36.57%		18 to 30	0	0.00%
	Unknown	0	0.00%		31 to 45	0	0.00%
	TOTAL:	175	100.00%		46 to 64	14	8.00%
Veteran	Yes	0	0.00%		65 and over	161	92.00%
	No	0	0.00%		Unknown	0	0.00%
	Unknown	175	100.00%		TOTAL:	175	100.00%
	TOTAL:	175	100.00%	Housing Arrangement	Homeless	0	0.00%
Race	White	137	78.29%		Dependent Living	1	0.57%
	Black	29	16.57%		Foster Care	0	0.00%
	American Indian	1	0.57%		Independent Living	172	98.29%
	Asian Pacific Islander	2	1.14%		In An Institution	1	0.57%
	Alaskan	0	0.00%		Supportive Independent Living	1	0.57%
	Other	6	3.43%		Unknown	0	0.00%
	TOTAL:	175	100.00%		TOTAL:	175	100.00%

Palm Beach Habilitation Center

Senior Residential Supports

Funding Amount Awarded:	\$45,000.00
Funding Amount Expended:	\$33,495.00

Number to be Served:	7
Actual Number Served:	7

Program Description

Program provides intensive Daily Living Skills Supports, which will enable seniors to continue living in the residence of their choice rather than in a skilled nursing home or assisted living facility.

Outcome Indicator

80% or 32 of 40 participants will be able to maintain their community-based living situation.

Actual Outcome Percentage Achieved

100.00%

Program Participant Demographic Data

Category	Characteristic	#	%	Category	Characteristic	#	%
Gender	Female	2	28.57%	Age	17 and under	0	0.00%
	Male	5	71.43%		18 to 30	0	0.00%
	Unknown	0	0.00%		31 to 45	0	0.00%
	TOTAL:	7	100.00%		46 to 64	6	85.71%
Veteran	Yes	0	0.00%		65 and over	1	14.29%
	No	6	85.71%		Unknown	0	0.00%
	Unknown	1	14.29%		TOTAL:	7	100.00%
	TOTAL:	7	100.00%	Housing Arrangement	Homeless	0	0.00%
Race	White	7	100.00%		Dependent Living	7	100.00%
	Black	0	0.00%		Foster Care	0	0.00%
	American Indian	0	0.00%		Independent Living	0	0.00%
	Asian Pacific Islander	0	0.00%		In An Institution	0	0.00%
	Alaskan	0	0.00%		Supportive Independent Living	0	0.00%
	Other	0	0.00%		Unknown	0	0.00%
	TOTAL:	7	100.00%		TOTAL:	7	100.00%

Ruth & Norman Rales Jewish Family Services

The Weisman Center Aging in Place Program

Funding Amount Awarded:	\$75,000.00
Funding Amount Expended:	\$75,000.00

Number to be Served:	1500
Actual Number Served:	1591

Program Description

Program serves seniors residing in South Palm Beach County, who might otherwise be homebound, isolated, and lack social, familial or community support. Programs promote active participation in social, health and wellness, cultural and engaging intellectual and educational opportunities, as well as providing linkages.

Outcome Indicator

85% or 1275 of 1500 Center Members will remain in their homes.

Actual Outcome Percentage Achieved

54.93%

Program Participant Demographic Data

Category	Characteristic	#	%	Category	Characteristic	#	%
Gender	Female	1130	71.02%	Age	17 and under	0	0.00%
	Male	458	28.79%		18 to 30	0	0.00%
	Other	3	0.19%		31 to 45	0	0.00%
	TOTAL:	1591	100.00%		46 to 64	18	1.13%
Veteran	Yes	183	11.50%		65 and over	1573	98.87%
	No	1080	67.88%		Unknown	0	0.00%
	Unknown	328	20.62%		TOTAL:	1591	100.00%
	TOTAL:	1591	100.00%		Housing Arrangement	Homeless	0
Race	White	0	0.00%	Dependent Living		0	0.00%
	Black	0	0.00%	Foster Care		0	0.00%
	American Indian	0	0.00%	Independent Living		0	0.00%
	Asian Pacific Islander	0	0.00%	In An Institution		0	0.00%
	Alaskan	0	0.00%	Supportive Independent Living		0	0.00%
	Other	1591	100.00%	Unknown		1591	100.00%
	TOTAL:	1591	100.00%	TOTAL:		1591	100.00%

Program Highlights

In April, one of our Program callers spoke to a member of our Weisman Delray Community Center that we hadn't seen in a while to check on his wellbeing. We discovered that the member had broken his arm, needed home assistance and was in need of help with paying his rent. He had been paying out of pocket for a Certified Nursing Assistant (CNA) to come to his home. Upon hearing this, the JFS caller notified the JFS Financial Assistance Department. Jerry spoke to our financial assistance staff and was counseled on budgeting and using Veteran's benefits for medical expenses. JFS paid his rent and utilities for that month, paid for home repairs, and placed him on the JFS food pantry recipient list to receive bags of nutritious food delivered to his door. He is now working with a JFS Social Worker as well as a Counselor at the Veterans Administration.

Non-Competitive

Overall Summary

Funding Amount Awarded:	\$1,892,381.00
Funding Amount Expended:	\$1,892,381.00

Number to be Served:	N/A
Actual Number Served:	N/A

Agencies:	6
Programs:	6

Program Description

Programs and services in this category address outcomes and performance measures that demonstrate positive change in the community but are not categorized in one of the main six service categories. Services include crisis lines, hunger relief partnerships, match funds, and more.

211 Palm Beach/Treasure Coast and United Way of Palm Beach County

Helpline / Crisis Line

Funding Amount Awarded:	\$152,457.00
Funding Amount Expended:	\$152,457.00

Number to be Served:	N/A
Actual Number Served:	N/A

Program Description

211 Palm Beach/Treasure Coast provides crisis intervention, suicide prevention, information, assessment and referral 24 hours/7 day per week, for the five county region. Individuals may reach out by calling the easy to remember three digit number "2-1-1," texting 898-211, emailing help@211pbtc.org, or chatting by clicking on the link found on our website.

Program Highlights

- For the combined period from January 2017 through December 2017, the 211 Helpline/Crisis Line handled 60,598 requests for help from Palm Beach County residents.*
- In 2017, the top three (3) needs identified by callers were Mental Health/Addictions (25.5%), followed by Housing (19.9%), and Utilities Assistance (8.8%).
- The majority of calls in 2017 involved Counseling, Assessment and/or Referral. This represents callers' increasing need for someone to listen to their concerns, help them prioritize needs and identify resources to meet those needs.
- Web visits increased from 46,525 in 2016 to 48,914 in 2017, while visits to the online resource database decreased slightly.
- The number of communications via email/chat/text decreased from 13,173 in 2016 to 12,676.**
- The goal of a 90% positive response rate was achieved in 2017 (94%), as measured by 8,038 caller satisfaction surveys.
- The goal of a 90% average staff competency rating for Information, Assessment and Referral calls was exceeded in 2017 (91%). The same goal of 90% for suicide calls was exceeded in 2017 (95%).
- The goals of 100% of providers in the database contacted annually and 75% of providers submitting updated program data was achieved with 1,592 agencies having been updated.
- For Resource Center Services, the following targets were established:
 - Crisis/Suicide = 95% of calls answered within 45 seconds;
 - Rape = 95% of calls answered within 45 seconds;
 - National Suicide Hotline = 95% of calls answered within 45 seconds;
 - Information, Assessment and Referral = 90% of calls answered within 90 seconds.
 For 2017, the results were as follows:
 - Crisis/Suicide = 86% of calls answered within 45 seconds;
 - Rape = 93% of calls answered within 45 seconds;
 - National Suicide Hotline = 89% of calls answered within 45 seconds;
 - Information, Assessment and Referral = 74%

*Due to an increased number of "unknowns" in geographic data, the PBC number is likely understated.

** Agency wide data for all geographic areas.

Area Agency on Aging

Match Funds

Funding Amount Awarded:	\$272,875.00
Funding Amount Expended:	\$272,875.00

Number to be Served:	N/A
Actual Number Served:	N/A

Program Description

County funds support services for seniors under the Older Americans Act. These funds are used as matching funds by Your Aging Resource Center/AAA, enabling them to draw down additional state and federal funds for Palm Beach County.

Program Highlights

- The Helpline had a total call volume of over 150,000 calls for the period of October 1, 2016 to September 30, 2017. Almost 70% of those calls were serving Palm Beach County seniors, persons with a disability and their caregivers.
- In January 2017, the Helpline implemented the WellMed Crisis Solution Program, which assisted over 20 Palm Beach County residents with homeless prevention, utility assistance, repair of air conditioning and electrical box when no other funding source was available to solve the crisis.
- The Helpline of the Area Agency on Aging participated in all of Palm Beach County Disaster Recovery Events in Palm Beach County offering resources and helping people apply for food stamps; including staffing two trained Agency employees at the Emergency Operations Center during Hurricane Irma. The Agency also participated at the FEMA Disaster Recovery Center after Hurricane Irma.
- The Agency has completed the renewal solicitations for 16 current Senior Community Supply Distribution sites.
- An additional 12 potential Senior Community Supply Distribution sites have been identified and have been invited to contract as a Community Distribution site.

Mae Volen Senior Center

Match Funds & Transportation Funds

Funding Amount Awarded:	\$1,194,135.00
Funding Amount Expended:	\$1,194,135.00

Number to be Served:	N/A
Actual Number Served:	N/A

Program Description

County funds support senior center and community care programs and transportation services in south County.

Program Highlights

- Number of unduplicated individuals served from October 1, 2016 through September 30, 2017:
 - Older American's Act: 872 total clients were served during this period, FAA funds supported 87.
 - Community Care for the Elderly: 93 overall clients were served during this time, FAA funds supported 5. This program provides over 700 hours of in-home care (bathing assistance, meal preparation and food, homecare) a year to the 5 clients!
 - Transportation: 1,335 clients were supported by FAA Funds, which amount to approximately 4,932 rides during the requested period.
- FAA funding provides support for the Older Americans Act program, which helps 1,335 people to improve access to health care, minimize social isolation, maintain social interaction, and allows the participants to better reach the community.
- Surveys conducted of the Older Americans Act program recipients demonstrate positive results including that the program is highly rated by recipients, the program effectively targets vulnerable populations and individuals who need the service, and the program provides assistance to individuals and caregivers, which is instrumental in allowing older persons to maintain their independence and avoid premature nursing home placement (www.gpra.net).
- Community Care for the Elderly program provides and extensive service array to participants including adult day care, intense home cleaning, companionship, escort services, home delivered meals, homemaking services, meal preparation shopping assistance, housing improvement, legal assistance, pest control services, respite services, emergency alert services, counseling, personal care support and medical supplies and equipment.

Palm Beach County Food Bank

Food Distribution & SNAP Outreach

Funding Amount Awarded:	\$155,295.00
Funding Amount Expended:	\$155,295.00

Number to be Served:	N/A
Actual Number Served:	N/A

Program Description

Food will be distributed throughout Palm Beach County through the PBC Food Bank. Additionally, a Supplemental Nutrition Assistance Program (SNAP) Specialist will be funded. The SNAP Specialist works with local organizations to enroll eligible residents in the program and can conduct the "food stamp review" which accelerates the application process.

Program Highlights

- Food Recovery and Distribution Outcome Achievements:
 - From October 1, 2016 through September 30, 2017, Palm Beach County Food Bank distributed approximately 4.3 million pounds of food.
 - The donated food, which was valued at approximately \$7,181,000, provided 3,583,333 meals.
 - This food served 440,082 individuals (unduplicated) including 126,058 families.
- Food Recovery and Distribution Success Story: 33-year-old Maria visited the Children's Outreach food distribution recently. She and her husband live on a tight budget with three children: 4-year-old twins, George and Alfredo, and 6-year-old daughter, Maya. Her husband works as a mechanic when he can find work and Maria cleans houses. She says the food she can get at Children's Outreach is so important to their family. "I'm so happy when I can get healthy food like vegetables and fruit for my kids. Thank you for this food. Without it, we would have gone hungry many times."
- Benefits Outreach Outcome Achievements:
 - From October 1, 2016 through September 30, 2017, each of the three Palm Beach County Food Bank Benefits Outreach Specialists completed an average of 89 applications a month, which is equivalent to 3,201 applications in a one-year cycle.
 - The Benefits Outreach Specialists assisted 6,807 clients.
 - \$3,609,042.00 in SNAP Benefits were awarded to these clients.
- Benefits Outreach Success Story: Elsa and her husband, Alexander, both lost their jobs around the same time. Elsa was a cruise line housekeeper and she was laid off due to Hurricane Irma. Alexander makes his living as a driver and has not worked for about a month. Their savings are running out and they have a 12-year-old son to take care of. Elsa's desperation to apply for Food Stamps was such that she arrived one hour early to her appointment. This was their first time applying for food assistance in a very long time. With tears in her eyes, she told me how concerned she was about not having enough money to buy food so they could eat and be able to pay all their expenses. She was very grateful for all the help I was able to provide her and her family through our SNAP Benefits Outreach Program.

Southeast Florida Behavioral Health Network

Wraparound Services Training

Funding Amount Awarded:	\$57,619.00
Funding Amount Expended:	\$57,619.00

Number to be Served:	N/A
Actual Number Served:	N/A

Program Description

Contract for services in partnership with Southeast Florida Behavioral Health Network for Wrap Around services training for Palm Beach County.

Program Highlights

- SEFBHN hosted a Vroon VDB Coaches Workshop to provide support and additional training to local Wraparound Supervisors and Coaches.
- SEFBHN trained an additional 150 persons in High Fidelity Wraparound continuing efforts to build capacity.
- An additional twenty-five persons completed certifications as High Fidelity Wraparound Facilitators and/or Coaches.
- Wraparound Steering Committee provided direction to increase data reporting and continuous quality improvement efforts.
- Wraparound Learning Community effectively supported the coaching of High Fidelity Wraparound and prevention of practice drift.
- Supervisors' System meetings were held to increase collaboration among system partners and behavioral health providers, increase awareness, access and availability of Wraparound for youth and families.

United Way of Palm Beach County

Hunger Relief

Funding Amount Awarded:	\$60,000.00
Funding Amount Expended:	\$60,000.00

Number to be Served:	N/A
Actual Number Served:	N/A

Program Description

This is a partnership with United Way of Palm Beach County to fund a position to carry out the community-wide strategic plan for hunger beginning in 2014 between a coalition of providers and funders. The County has been a strong supporter of this effort from inception.

Program Highlights

- The first year's annual report was released in October 2016.
- New Vice President of Hunger Relief (Doug Eberhart) was hired in March 2017 to spearhead the initiative on behalf of the community.
- Two AmeriCorps VISTA members started focusing on Senior Hunger and Infrastructure.
- Developed a comprehensive list of 35 metrics to focus on for the fiscal year within the four-workgroup areas of Children, Seniors, Infrastructure, and the Glades.
- Secured \$567,677 from seven partners (Jim Moran Foundation, Farris Foundation, Children's Services Council, Palm Beach County, Batchelor Foundation, Community Foundation PB/MC, and Quantum Foundation) to support administration and projects to help meet the Hunger Relief Initiative's metrics.
- Completed surveys and mapping of food pantries in Palm Beach County. Created maps depicting the locations of food-related assets including food pantries.
- Developed three subcommittees to hone in on special projects and assignments: Community Gardens, Nutrition Education, and Backpacks.
- Held regular committee meetings with funders, stakeholders and community members. Organized various other planning meetings with other hunger stakeholders including community garden owners, home delivered meal providers, green market owners, food pantry owners, and backpack program providers.
- Developed a volunteer recruitment plan, which included recruiting college and newly retired volunteers to participate in the home delivered meal programs.
- Created a cold storage RFP to increase cold storage capacity within food pantries throughout the county.
- Backpack subcommittee established USDA recommended parameters on calories, carbohydrates, protein and sodium intake for backpack programs.
- Secured funding to create new summer meal sites.