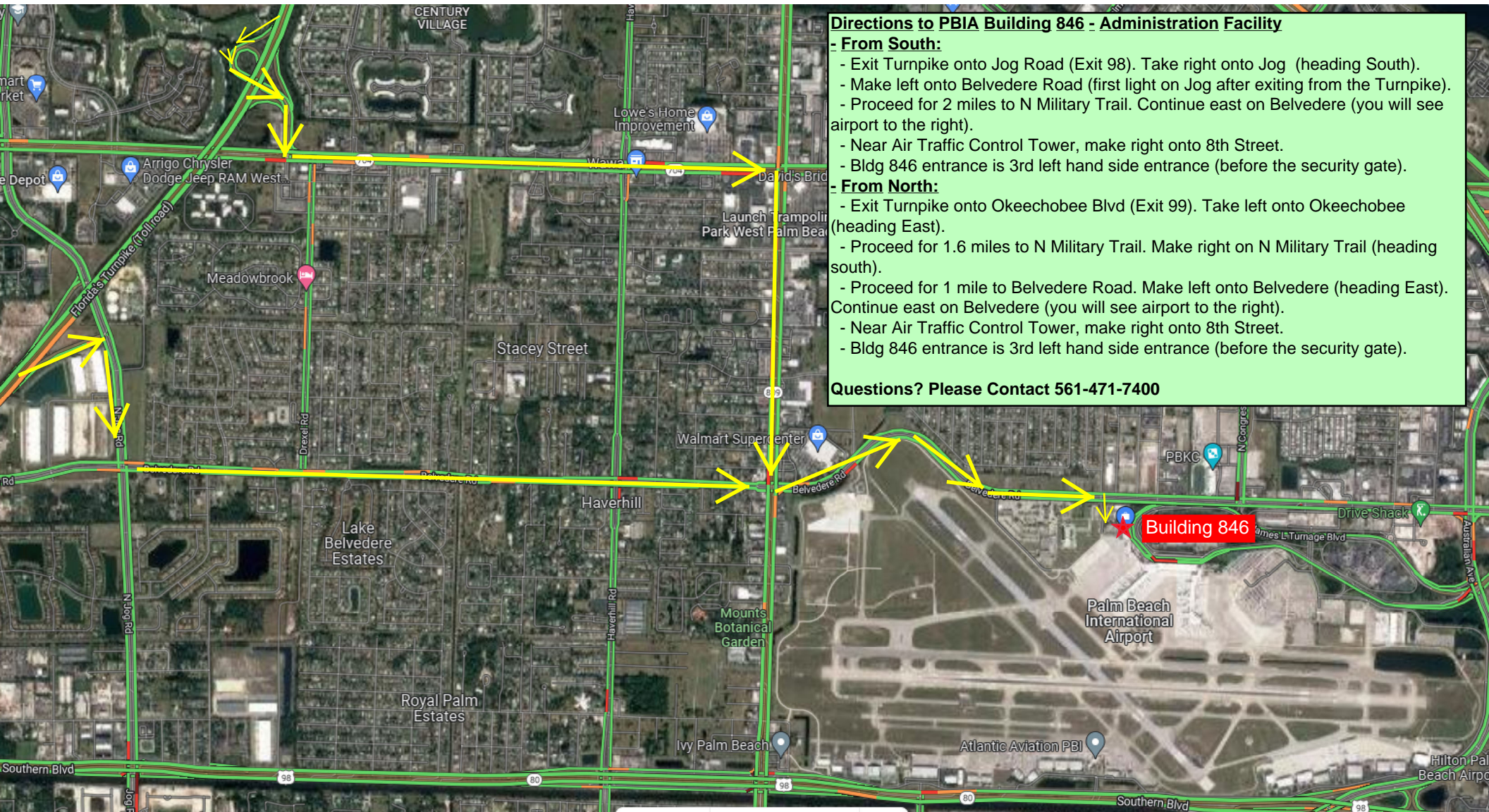


Directions to Palm Beach County Department of Airports Administrative Offices - Building 846 From Turnpike



Directions to PBIA Building 846 - Administration Facility

- From South:

- Exit Turnpike onto Jog Road (Exit 98). Take right onto Jog (heading South).
- Make left onto Belvedere Road (first light on Jog after exiting from the Turnpike).
- Proceed for 2 miles to N Military Trail. Continue east on Belvedere (you will see airport to the right).

- Near Air Traffic Control Tower, make right onto 8th Street.

- Bldg 846 entrance is 3rd left hand side entrance (before the security gate).

- From North:

- Exit Turnpike onto Okeechobee Blvd (Exit 99). Take left onto Okeechobee (heading East).
- Proceed for 1.6 miles to N Military Trail. Make right on N Military Trail (heading south).

- Proceed for 1 mile to Belvedere Road. Make left onto Belvedere (heading East). Continue east on Belvedere (you will see airport to the right).

- Near Air Traffic Control Tower, make right onto 8th Street.

- Bldg 846 entrance is 3rd left hand side entrance (before the security gate).

Questions? Please Contact 561-471-7400