

Palm Beach County Water Resources Task Force Meeting

September 16, 2010

Palm Beach County

National Pollution Discharge Elimination System (NPDES) Permit
Municipal Separate Storm Sewer Systems (MS4s)



Alan D. Wertepny, NPDES Coordinator

What is the NPDES MS4 Permit Program?

- It is a federal program designed to eliminate stormwater pollutant discharges to water of the state from municipal systems.
- Pursuant to the Clean Water Act the Environmental Protection Agency established NPDES permit applicant requirements.
- In the state of Florida the Florida Department of Environmental Protection administers the NPDES program.



NPDES Permit Requirements Include:

- Identifying outfall and pollutant loadings
- Detecting and eliminating non-stormwater discharges to the system
- Reducing pollutants in runoff from industrial, commercial and residential areas
- Controlling stormwater discharges from new development and redevelopment areas
- Implementation of a monitoring program
- Annual reporting



www.StormwaterAndMe.org

NPDES MS4 Permit

- In Palm Beach County there are 41 permittees
 - 35 municipalities
 - 3 special districts
 - FDOT
 - Turnpike
 - Palm Beach County
- Normally valid for 5-years and then re-issued
- In July 2010 the State provided a preliminary draft third term permit
- At re-issuance of the permit, requirements are increased adding more accountability

INTERNAL DRAFT - 6/28/10
STATE OF FLORIDA
MUNICIPAL SEPARATE STORM SEWER SYSTEM PERMIT

FACILITY NAME: Palm Beach County MS4

PERMIT NUMBER: FLS000018-003 – MAJOR Facility

ISSUANCE DATE: DRAFT

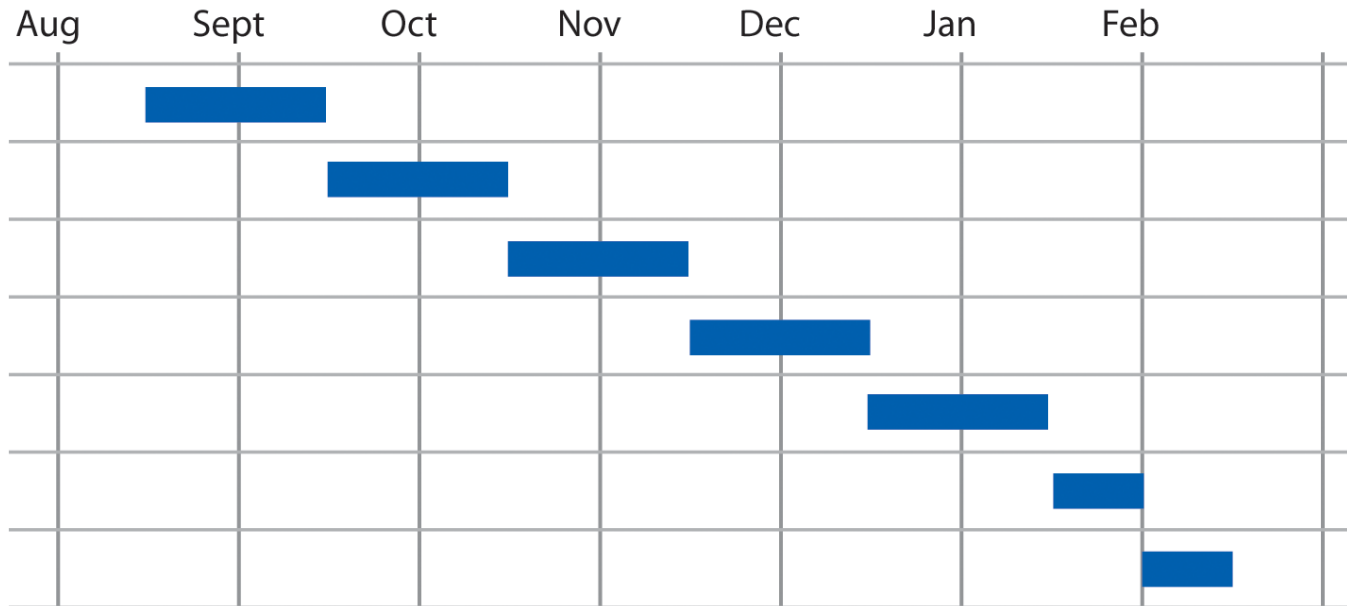
EXPIRATION DATE: DRAFT

PERMITTEES:

Atlantis, City of 260 Orange Tree Drive Atlantis, Florida 33462-1193	Lantana, Town of 500 Greyhounds Circle Lantana, Florida 33462
Belle Glade, City of 110 Dr. Martin Luther King, Jr. Blvd. Belle Glade, Florida 33430	Manalapan, Town of 600 South Ocean Avenue Manalapan, Florida 33462
Boca Raton, City of 2500 NW 1 st Avenue Boca Raton, Florida 33431	Mangonia Park, Town of 1755 East Tiffany Drive Mangonia Park, Florida 33407
Boynton Beach, City of 124 East Woolbright Road Boynton Beach, Florida 33435	North Palm Beach, Village of 645 Prosperity Farms Road North Palm Beach, Florida 33408
Cloud Lake, Town of 100 Lang Road Cloud Lake, Florida 33406	Northern Palm Beach County Improvement District 359 Hiatt Drive Palm Beach Gardens, Florida 33418
Delray Beach, City of 100 NW 1 st Avenue Delray Beach, Florida 33444	Ocean Ridge, Town of 6450 North Ocean Boulevard Ocean Ridge, Florida 33435
Florida Department of Transportation District Four 3400 West Commercial Blvd. Fort Lauderdale, Florida 33309	Pahokee, City of 171 North Lake Avenue Pahokee, Florida 33476
Florida Department of Transportation Florida's Turnpike Enterprise P.O. Box 9828 Fort Lauderdale, Florida 33310	Palm Beach, Town of 360 South County Road Palm Beach, Florida 33480
Glen Ridge, Town of 1501 Glen Road Glen Ridge, Florida 33406	Palm Beach County 301 N. Olive Avenue West Palm Beach, Florida 33401

Activities Required to Issue Third Term Permit

Months



Draft permit issued Sept 15, 2010 earliest date for issuing final permit Feb 15, 2011

New Permit Requirements

Established Written Procedures for:

1. Conducting Stormwater Inspection Programs(8)
2. Providing Training Programs for Employees and Contractors (4)
3. Implementing a Public Education and Outreach Plan(3)
4. Additional Land Development Activities (2)
5. Implement a Plan to Achieve Established TMDLs reduction goals

New Permit Requirements

1. Conduct Inspection Programs for:
 - Litter Control
 - Street Sweeping
 - Fleet Maintenance Yard(s)
 - Waste Transfer Station
 - Illicit Discharge for **Commercials Areas**
 - High Risk Facilities/**Industrial Areas**
 - Construction Site
 - Components of the Stormwater Systems (10)

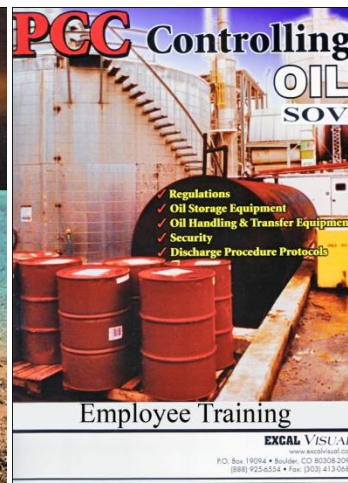
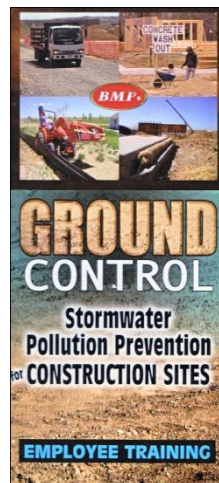
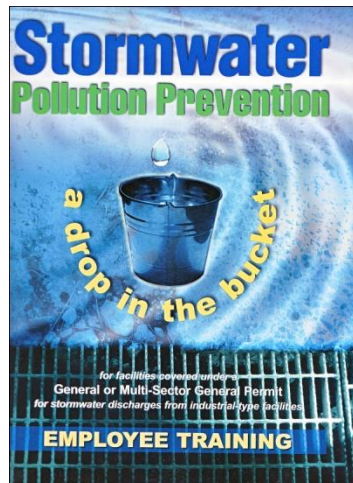
Components of the Stormwater Systems Require Annually Updating the Inventory, a Mandatory Inspection Schedule, and Identifying the Inspection & Maintenance Activities

- Ponds
- Pump Stations
- Weirs
- Exfiltration Trenches
- Pipe / Culverts
- Control Structures
- Pollution Control Boxes
- Catch Basins / Inlets
- Swales
- Major Outfalls

New Permit Requirements

(2.) Provide Training Programs for Employees and Contractors

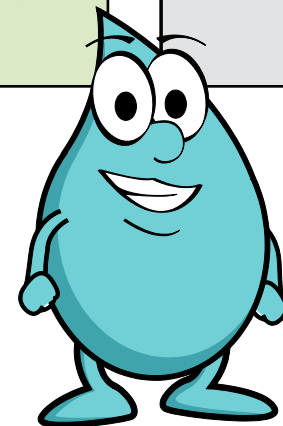
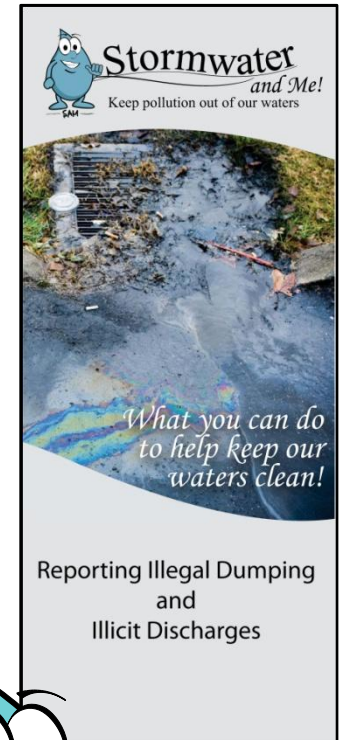
- Pesticide, Herbicide, and Fertilizer
- Illicit Discharges
- Spill Prevention and Response
- Sediment and Erosion Controls



New Permit Requirements

(3.) Implement a Public Education and Outreach Plan

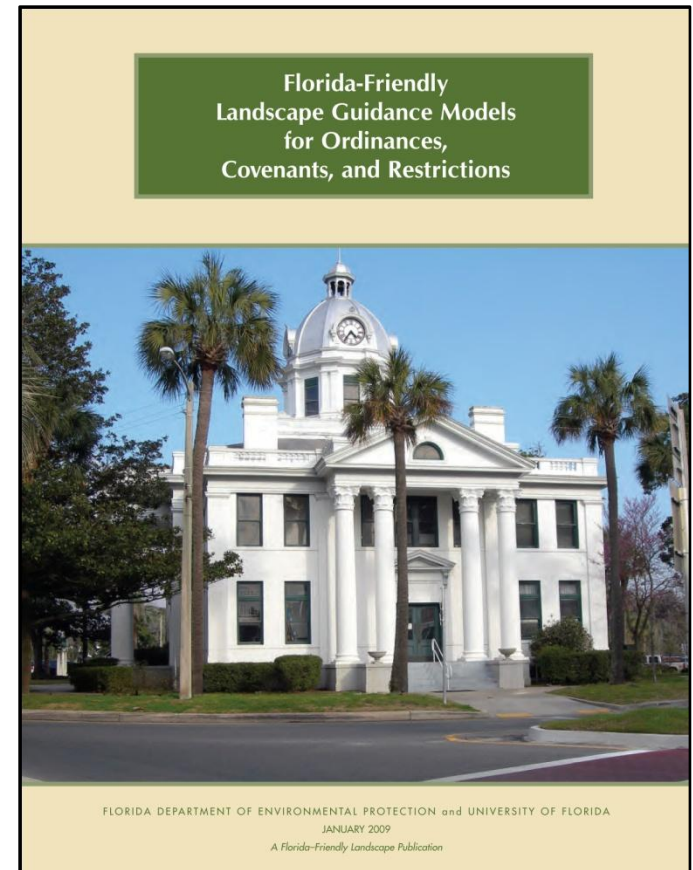
- Reduction in use of Pesticides, Herbicides, and Fertilizers
- Identification of Illicit Discharges / Illegal Dumping and How to Report and Incident
- Proper Disposal of Household Hazardous Waste



New Permit Requirements

4. Land Development Activities

- Require State Permits (ERP and CGP) prior to issuing local grading, clearing permits, or approvals
- Adopt Florida Friendly Ordinances
 - Landscaping
 - Fertilizer Usage



New Permit Requirements

5. Implement a Plan to Achieve Established Total Maximum Daily Load (TMDL) Reduction Goals
 - Developing BMPs, Monitoring Program, and Assessment Plan
 - Monitoring May Include Storm Event Sampling at Selected Outfalls
 - Add Additional Stormwater Management Program / BMPs to Meet the TMDL Requirements
 - Annual Report Status of Program

What this means to MS4 \$\$\$\$

- Increased Reporting Requirements
- Increased Responsibilities of Personnel
- Increased Staffing and Commitment of Limited Resources
- Increased Cost to Comply

Questions

