

# Loxahatchee River Watershed Restoration Project



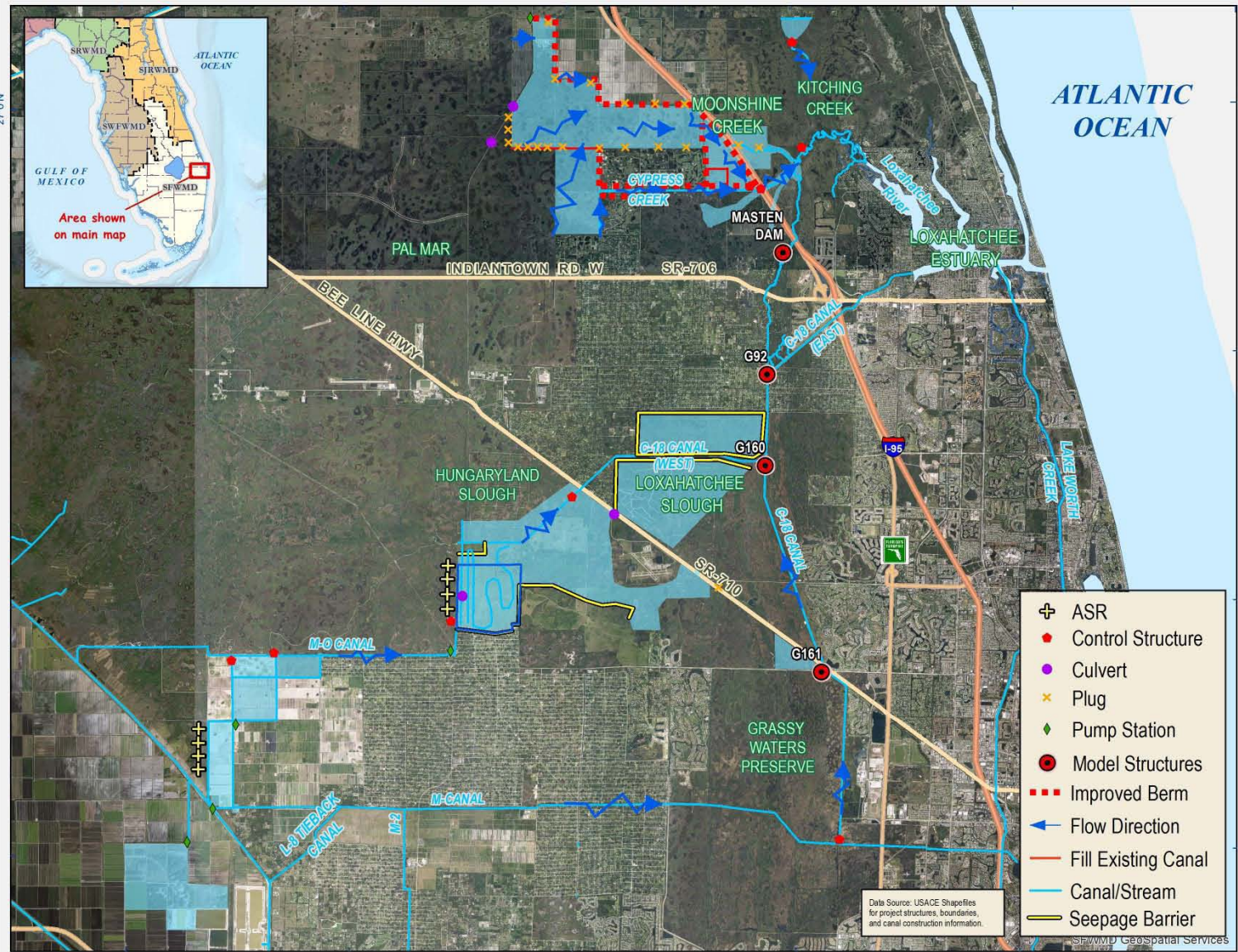
Palm Beach County Task Force

July 20, 2017

## Loxahatchee River Watershed Restoration Project

- Initial array of alternatives – modeling results and calibration report posted May 2017
- Project delivery team review of modeling results and calibration report identified calibration and application concerns that require resolution
- Modeling sub-team daily work sessions to address concerns
- Schedule slip has occurred
- Project team looking into opportunities to recover time in the project schedule
- Project team anticipates formally updating project schedule by the end of July 2017





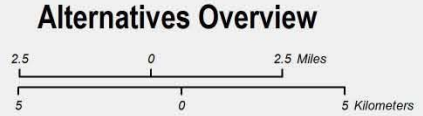
- ⊕ ASR
- ◆ Control Structure
- Culvert
- ✕ Plug
- ◇ Pump Station
- Model Structures
- ▬ Improved Berm
- ➔ Flow Direction
- Fill Existing Canal
- Canal/Stream
- Seepage Barrier

Data Source: USACE Shapfiles for project structures, boundaries, and canal construction information.

SRWMD Geospatial Services



BASE CREDITS:  
State plane projection, Florida east zone, NAD 83-HARN, US feet.  
  
South Florida Water Management District  
3301 Gun Club Rd., West Palm Beach, Florida 33406  
(561) 686-8800; www.sfwmd.gov



### Alternatives Overview

IMPORTANT DISCLAIMER:  
This map is a conceptual or planning tool only. The South Florida Water Management District does not guarantee or make any representation regarding the information contained herein. It is not self-executing or binding, and does not affect the interests of any persons or properties, including any present or future right or use of real property.

Map Date: May 2017



## Additional Tasks/Information

- **Five Alternatives to be analyzed**
- **Three potential hybrids developed by the PDT on 5/1/2017**
  - **Core team is reviewing to determine which to carry forward**
- **Team continues to refine and improve project assumptions, cost estimates, water quality analysis and water budget schematics**

