



Palm Beach County  
Office of Resilience

# CLIMATE RESILIENCE

*Stessy Cocerez, Resilience and Sustainability Analyst, PBC OOR*

In Palm Beach County



# CLIMATE IMPACTS





# CLIMATE IMPACTS





# OUR PROJECTS



## VA+RAP



### VULNERABILITY ASSESSMENT (VA)

The VA will assess the County's unincorporated area and western municipalities and County assets owned or maintained in other municipalities to measure potential climate threat impacts and identify the levels at which the assets, including people, property, and natural resources, may be affected.

### RESILIENCE ACTION PLAN (RAP)

Will provide County operations and County-wide community resilience targets, a strategy to achieve these targets, and a public engagement program that ensures social equity in evaluating, prioritizing, and implementing solutions. RAP will examine current and future conditions that impact the sustainability and resilience of PBC and the community.

# OOOR PROJECTS



## VA+RAP Deliverables

### CLIMATE RISK ASSESSMENT

- Exposure & sensitivity analysis and risk summary

### RESILIENCE ACTION PLAN

- Adaptation & mitigation strategies

### GIS MAP TOOL & DATA DASHBOARD

- Showing flooding and sea level rise impacts

### PRIORITIZED PROJECT LIST

- 30 representative projects

### IDENTIFIED STRATEGIES

- Costs, timelines, social equity



# OUR PROJECTS



## VA+RAP Hazards



### **Coastal Erosion:**

The permanent removal of sand from shorelines and coastal lands due to wind, waves, and longshore currents.



### **Drought:**

A period of abnormally dry weather due to a rainfall deficit



### **Extreme Heat:**

A period of hotter and more humid temperatures than average for a specific location at that time of year.



### **Non-Coastal/Inland Flooding:**

Temporary inundation of normally dry land due to excessive precipitation rates.



### **Severe Storm:**

Tornadoes, hurricanes, tropical storms, and other weather events that bring excessive rainfall and wind that produce higher and stronger storm surges.



### **High Wind:**

Events with sustained wind speeds that are powerful enough to blow down trees and powerlines, damage property, and knock debris loose.



### **Wildfire:**

An uncontrolled fire that begins in an undeveloped area but the spread of which threatens nearby communities, populations, and critical assets.



### **Flooding:**

- Sea Level Rise
- Tidal Flooding
- Storm Surge
- Rainfall
- Compound Flooding



# OOOR PROJECTS



## Hot Spots

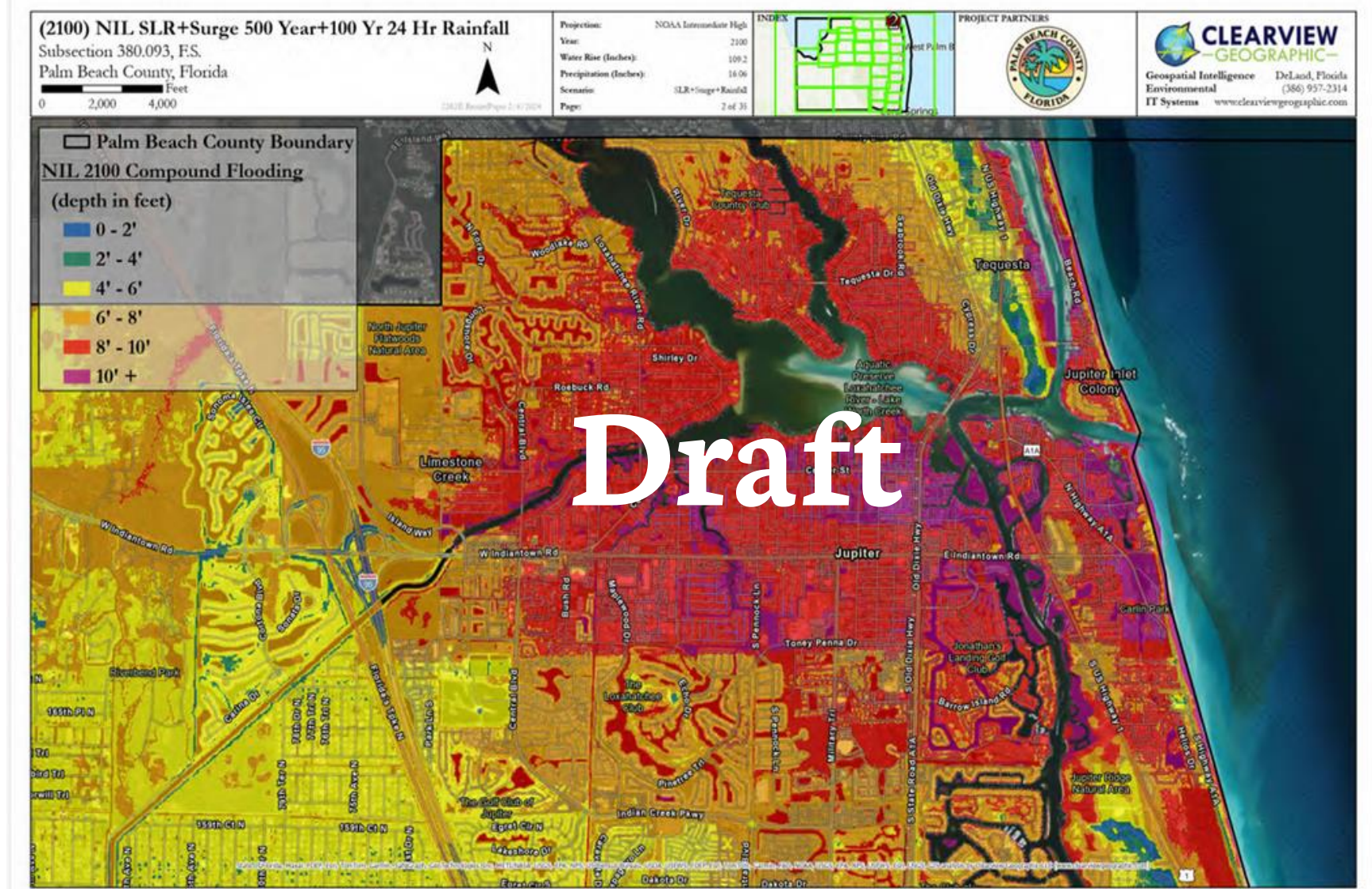
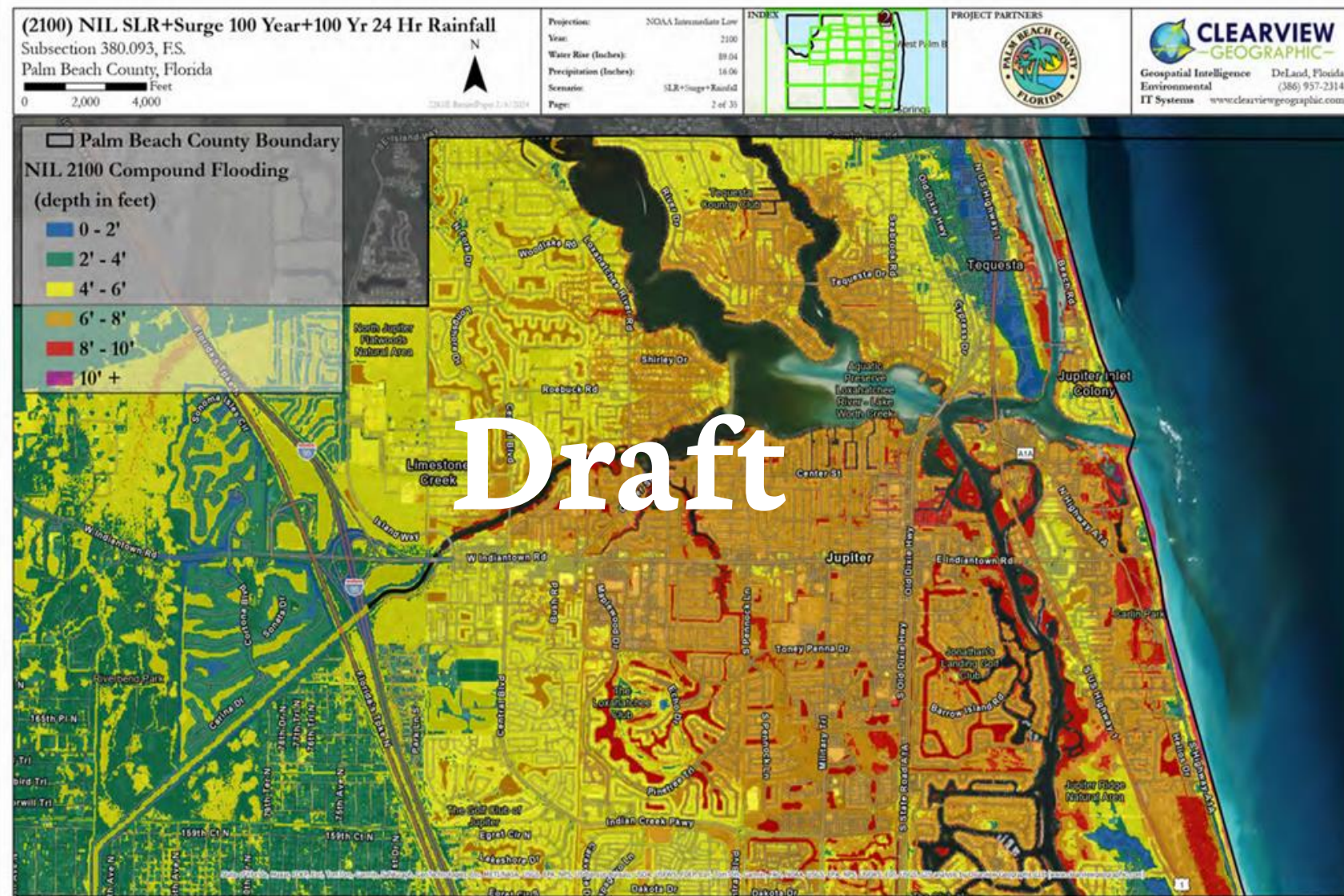




# OOOR PROJECTS



## SLR + Surge + Rainfall





# OOOR PROJECTS



## VA+RAP Timeline





# OOOR PROJECTS



## Central PBC VA



## FDEP RESILIENT FLORIDA PLANNING GRANT

PBC OOR will partner with six (6) municipalities to conduct flooding and sea level rise (SLR) vulnerability assessments and identify flooding and SLR risks on critical and regionally-significant assets owned or maintained by the municipalities.

- Town of Cloud Lake
- Town of Glen Ridge
- Village of Golf
- Town of Haverhill
- Town of Hypoluxo
- Village of Palm Springs



# OUR PROJECTS



## Glades Tree Campaign

### EPA ENVIRONMENTAL JUSTICE GOVERNMENT-TO-GOVERNMENT (EJG2G) PROGRAM

Through partnering with PBC Parks & Recreation and Community Greening, the County will expand tree canopy in the Glades region. The project will increase the tree canopy of six PBC Parks in the Glades and include at least eight tree giveaways of both native and fruit trees to members of the Glades community. The project will help improve air quality, provide shade and cooling, absorb stormwater, mitigate climate change, and boost access to fresh produce.





# FOLLOW US



Facebook &  
Instagram



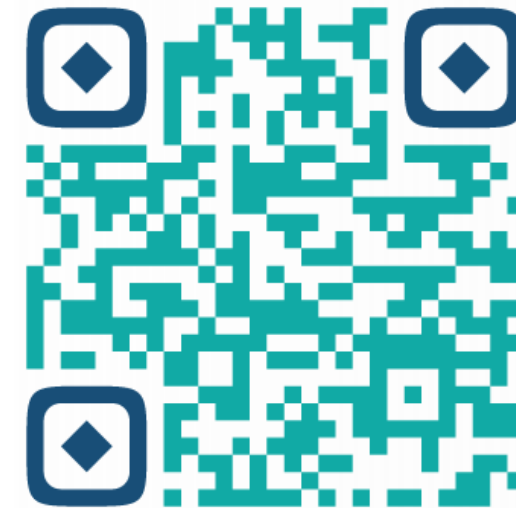
@ResilientPBC

LinkedIn



@Palm Beach County  
- Office of Resilience

SIGN UP FOR OUR MONTHLY  
NEWSLETTER HERE!



PBC Office of Resilience Website:

<https://discover.pbcgov.org/resilience/>