

RESOLUTION APPROVING ZONING PETITION Z96-32  
OFFICIAL ZONING MAP AMENDMENT (REZONING)  
PETITION OF BARTON ROAD BAPTIST CHURCH  
BY RALPH C. HALL, AGENT  
(WEST PINES BAPTIST CHURCH)

WHEREAS, the Board of County Commissioners, as the governing body of Palm Beach County, Florida, pursuant to the authority vested in Chapter 163 and Chapter 125, Florida Statutes, is authorized and empowered to consider petitions relating to zoning; and

WHEREAS, the notice and public hearing requirements, as provided for in Article 5 (Development Review Procedures) of the Palm Beach County Unified Land Development Code (Ordinance 92-20, as amended), have been satisfied; and

WHEREAS, Zoning Petition Z96-32 was presented to the Board of County Commissioners at a public hearing conducted on October 24, 1996; and

WHEREAS, the Board of County Commissioners has considered the evidence and testimony presented by the petitioner and other interested parties, the recommendations of the various county review agencies, and the recommendation of the Zoning Commission; and

WHEREAS, the Board of County Commissioners made the following findings of fact:

1. This official zoning map amendment (rezoning) is consistent with the Palm Beach County Comprehensive Plan;
2. This official zoning map amendment (rezoning) is consistent with the requirements of the Palm Beach County Unified Land Development Code;
3. This official zoning map amendment (rezoning) is compatible with surrounding uses and zones, as defined in the Palm Beach County Unified Land Development Code, is generally consistent with existing uses and zones surrounding the subject land, and is the appropriate zoning district for the land;
4. This official zoning map amendment (rezoning) does not result in significantly adverse impacts on the natural environment, including but not limited to water, air, stormwater management, wildlife, vegetation, wetlands, and the natural functioning of the environment;
5. This official zoning map amendment (rezoning) will result in a logical and orderly development pattern;
6. This official zoning map amendment (rezoning) complies with Article 11 (Adequate Public Facilities Standards) of the Palm Beach County Unified Land Development Code; and,
7. This official zoning map amendment (rezoning) is consistent with the requirements of all other applicable local land development regulations.

WHEREAS, Article 5, Section 5.3.D.9 (Action by Board of County Commissioners) of the Palm Beach County Unified Land Development Code requires that the action of the Board of County Commissioners be adopted by resolution.

NOW, THEREFORE, BE IT RESOLVED BY THE BOARD OF COUNTY COMMISSIONERS OF PALM BEACH COUNTY, FLORIDA, that Zoning Petition Z96-32, the petition of Barton Road Baptist Church, by Ralph C. Hall, agent, for an OFFICIAL ZONING MAP AMENDMENT (REZONING) from the Agricultural Residential (AR) Zoning District to the Residential Transitional (RT) Zoning District on a parcel of land legally described in EXHIBIT A, attached hereto and made a part hereof, and generally located as indicated on a vicinity sketch attached as EXHIBIT B, attached hereto and made a part hereof, was approved on October 24, 1996.

Commissioner McCarty moved for the approval of the Resolution.

The motion was seconded by Commissioner Aaronson and, upon being put to a vote, the vote was as follows:

Ken Foster, Chair	--	Aye
Burt Aaronson, Vice Chair	--	Aye
Maude Ford Lee	--	Absent
Karen T. Marcus	--	Absent
Mary McCarty	--	Aye
Warren Newell	--	Aye
Carol A. Roberts	--	Aye

The Chair thereupon declared that the resolution was duly passed and adopted on October 24, 1996.

APPROVED AS TO FORM  
AND LEGAL SUFFICIENCY

PALM BEACH COUNTY, FLORIDA  
BY ITS BOARD OF COUNTY  
COMMISSIONERS

DOROTHY H. WILKEN, CLERK

BY: *Pauline Altman*  
COUNTY ATTORNEY

BY: *Jill H. Wilken*  
DEPUTY CLERK

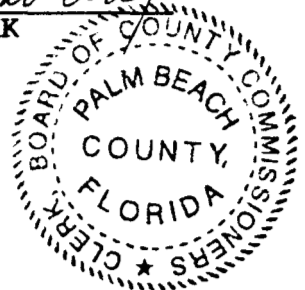


EXHIBIT A  
LEGAL DESCRIPTION

WEST PINES BAPTIST CHURCH  
(formerly Barton Road Baptist Church)  
4906 Melaleuca Lane  
Lake Worth, Florida 33463

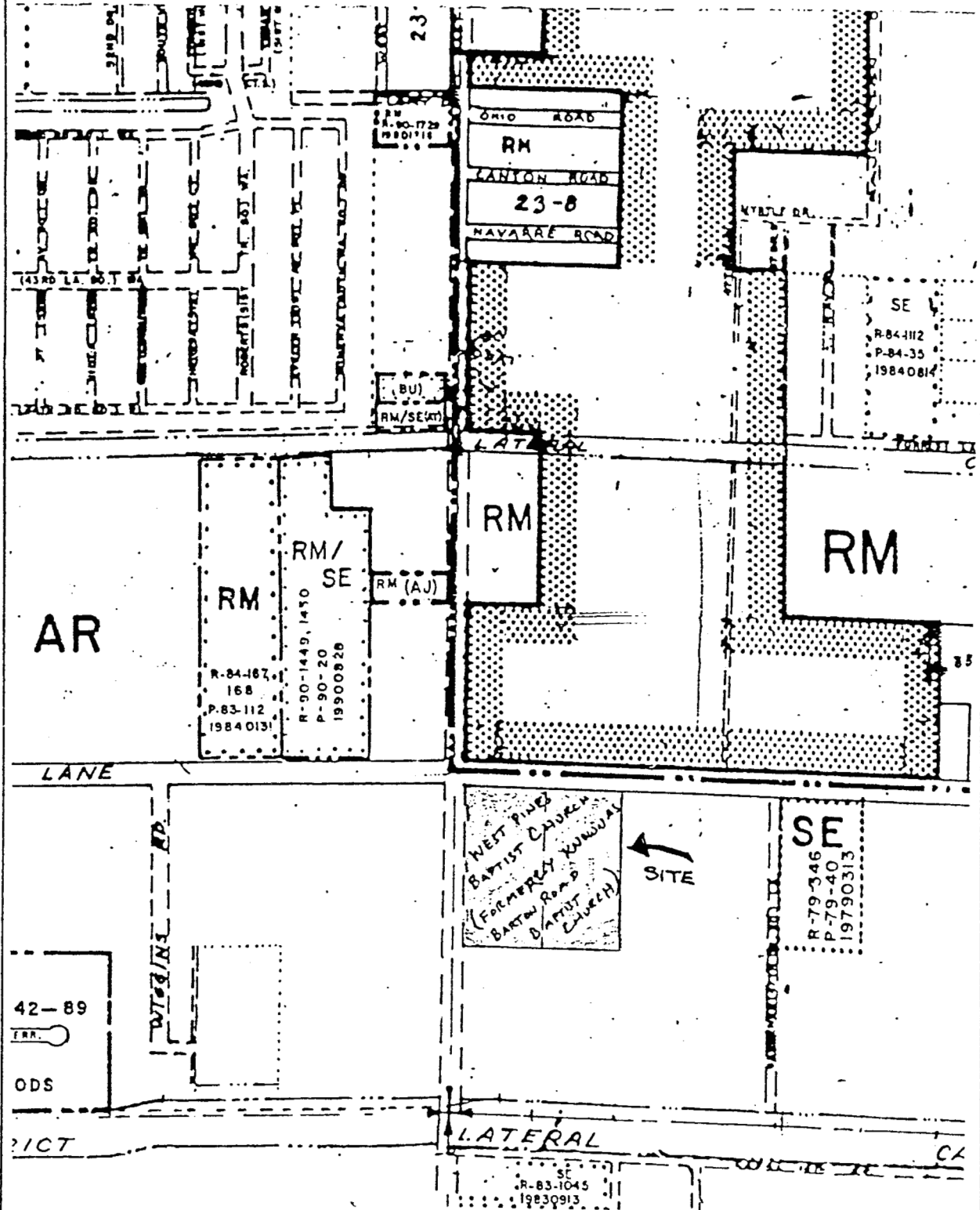
LEGAL DESCRIPTION OF THE PROPERTY  
The N.W.  $\frac{1}{4}$  of the S.W.  $\frac{1}{4}$  of the S.W.  $\frac{1}{4}$  of  
Section 25, Township 44 South, Range 42 East,  
Palm Beach County, Florida, Less the  
right-of-way for Melaleuca Lane.

Acres - 9.274

S/T/R = Section 25, Township 44 S, Range 42 E

EXHIBIT B

PALM BEACH COUNTY  
VICINITY SKETCH/ZONING



Petition Number: 96-32  
Zoning Quad Page \_\_\_\_\_  
Date: 9/26/96

