

RESOLUTION NO. R-2001-0972

RESOLUTION CORRECTING RESOLUTION NO. R-2001-0596
RESOLUTION APPROVING ZONING PETITION OF
ALDRICH TOOL RENTAL
PETITION NO. Z97-003(A)

WHEREAS, Aldrich Tool Rental petitioned the Palm Beach County Board of County Commissioners on April 26, 2001 for an Official Zoning Map Amendment (Z) from Residential High Density (RH) to General Commercial (CG) with a CONDITIONAL OVERLAY ZONE (COZ); and

WHEREAS, Resolution No. R-2001-0596 adopted April 26, 2001 confirming the action of the Board of County Commissioners, inadvertently contained an incorrect legal description; and

WHEREAS, the legal description of Resolution No. R-2001-0596 should have read as shown on Exhibit A.

NOW, THEREFORE, BE IT RESOLVED BY THE BOARD OF COUNTY COMMISSIONERS OF PALM BEACH COUNTY, FLORIDA, that:

1. The foregoing recitals are hereby affirmed and ratified.
2. The legal description of Resolution No. R-2001-0596 is hereby corrected.

Commissioner Roberts moved for the approval of the Resolution.

The motion was seconded by Commissioner McCarty, and upon being put to a vote, the vote was as follows:

Warren H. Newell, Chairman	-	Aye
Carol A. Roberts, Vice Chair	-	Aye
Karen T. Marcus		Absent
Mary McCarty	-	Aye
Burt Aaronson		Aye
Tony Masilotti		Aye
Addie L. Greene		Aye

The Chair thereupon declared the resolution was duly passed and adopted on June 25, 2001.

APPROVED AS TO FORM
AND LEGAL SUFFICIENCY

PALM BEACH COUNTY, FLORIDA
BY ITS BOARD OF COUNTY
COMMISSIONERS

DOROTHY H. WILKEN, CLERK

BY: *Pauline Otter*
COUNTY ATTORNEY

BY: *Joan Hawley*
DEPUTY CLERK

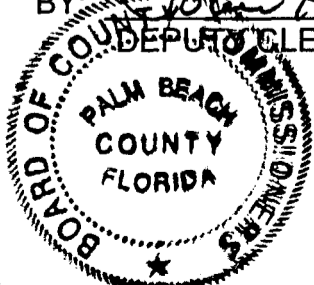


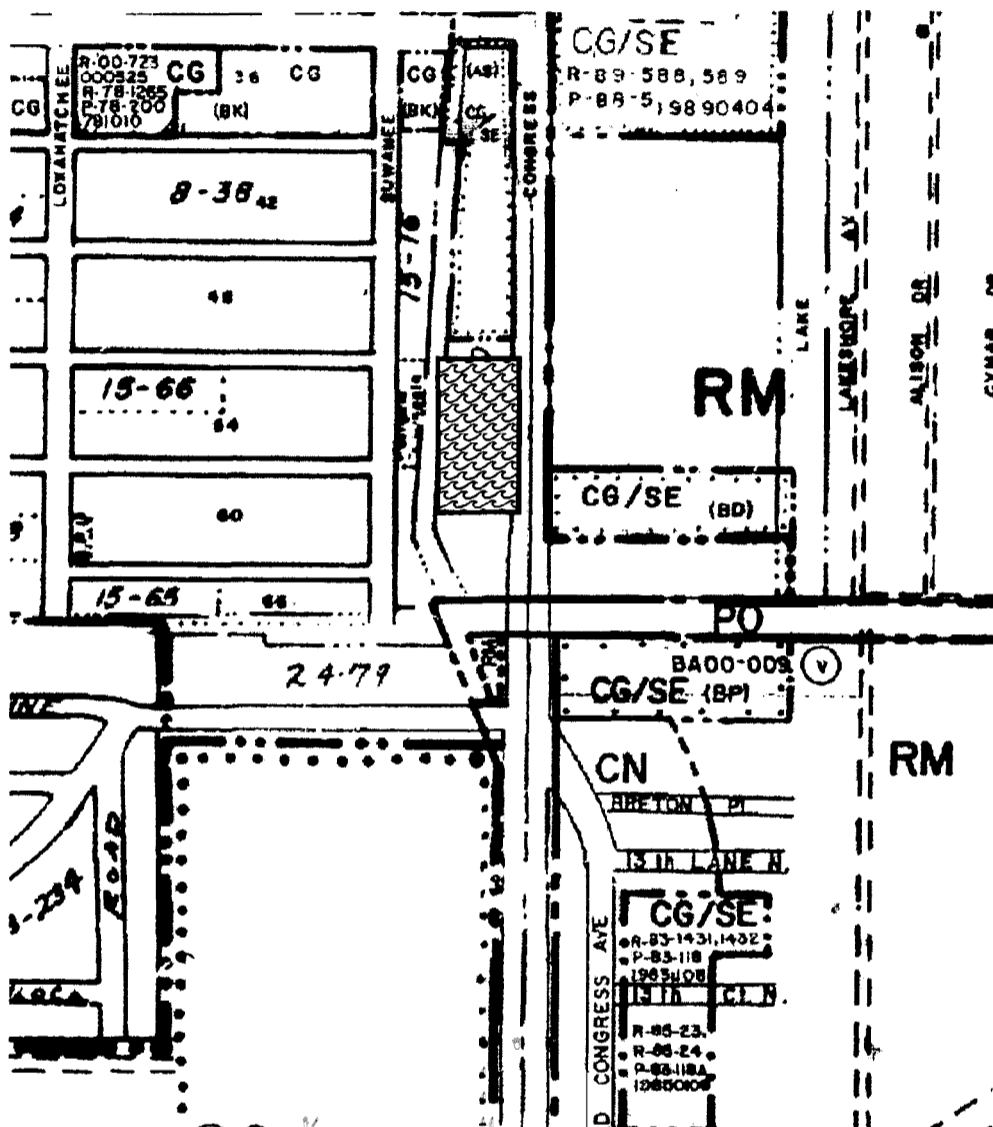
EXHIBIT A
LEGAL DESCRIPTION

Lot 21, Meerdink's Little Ranches according to the Plat thereof on file in the Office of the Clerk of the Circuit Court in and for Palm Beach County, Florida in Plat Book 4, Page 50, less the East 15 feet thereof conveyed to the County of Palm Beach for right of way of Congress Avenue in OR Book 1742, Page 1663, Public Records of Palm Beach County Florida. Subject to a utility easement over and upon the west 20 feet of the east 35 feet of said Lot 21.

EXHIBIT B
VICINITY SKETCH

EXHIBIT B

PALM BEACH COUNTY ZONING QUAD/VICINITY SKETCH



Petition Number Z/DOA1997-003(A)

Zoning Quad Page 16

Date March 15, 2001



NORTH