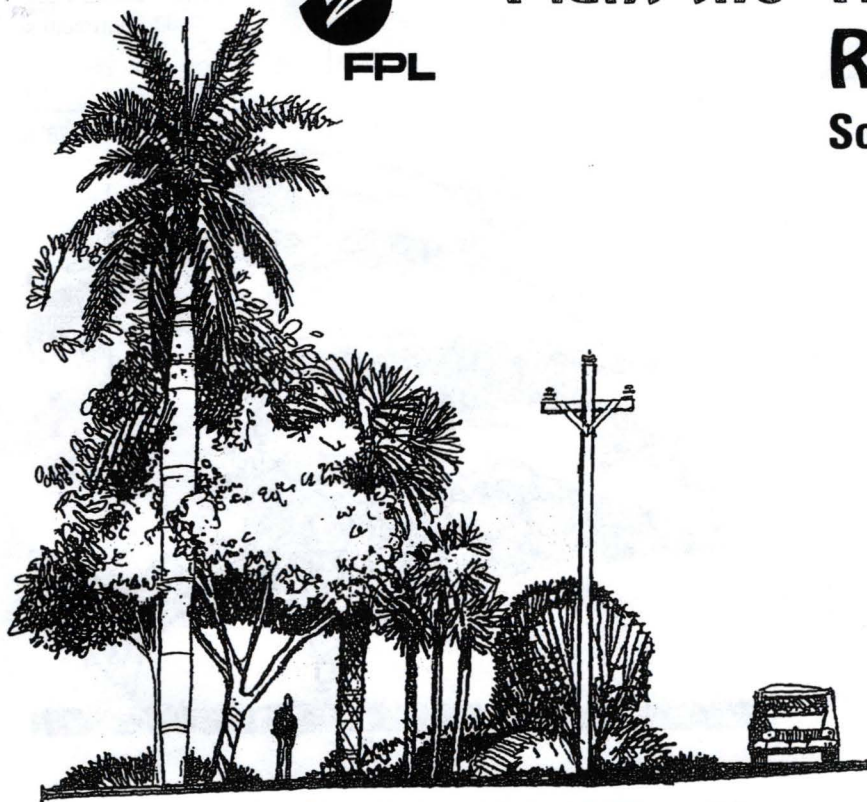




# **"Plant the RIGHT TREE in the RIGHT PLACE"**

## **South Florida**



## **Plan Before You Plant**

**Choose suitable trees and palms for planting around your home, near powerlines, for courtyards, patios, lawns and streetscapes.**

### **PROPER TREE SELECTION**

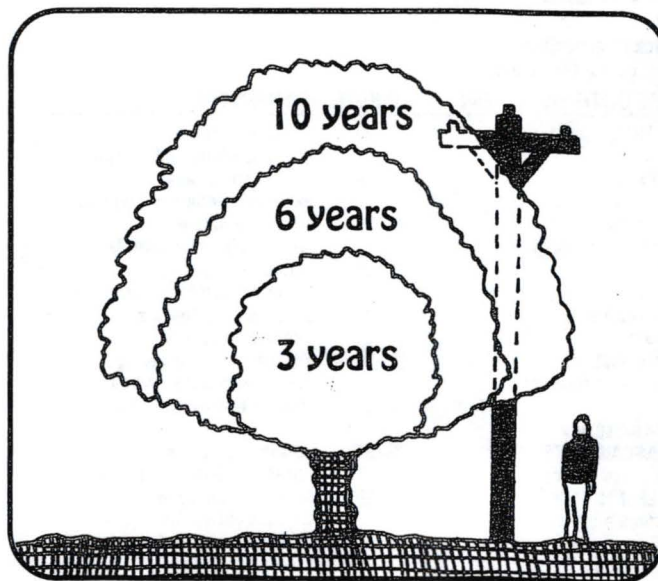
Often, we take our utility service for granted because it has become a part of our daily lives. To enjoy the convenience of reliable electrical service, distribution systems are required to bring electricity to our homes.

The location of these utility lines should play a major role in your tree and planting site selection. The ultimate, mature height and width of a tree to be planted should not exceed the available overhead growing space. It's important to plant the right tree in the right place. Proper tree selection will help to ensure trouble-free electrical service to your home for years to come.

The selection of trees to plant requires careful consideration. Trees planted in the wrong place can cause serious problems such as clogged sewers, cracked sidewalks, and power service interruptions. Planting the right tree in the right place can reduce maintenance expenses for homeowners as well as FPL, while improving the appearance of the landscape.

Consult your tree care professional or garden center staff to help you select the right tree.

In this publication you will find a select list of trees and palms as well as recommendations for planting in relation to utility lines.



**Always consider the ultimate mature size when planting.**



## SMALL TREES

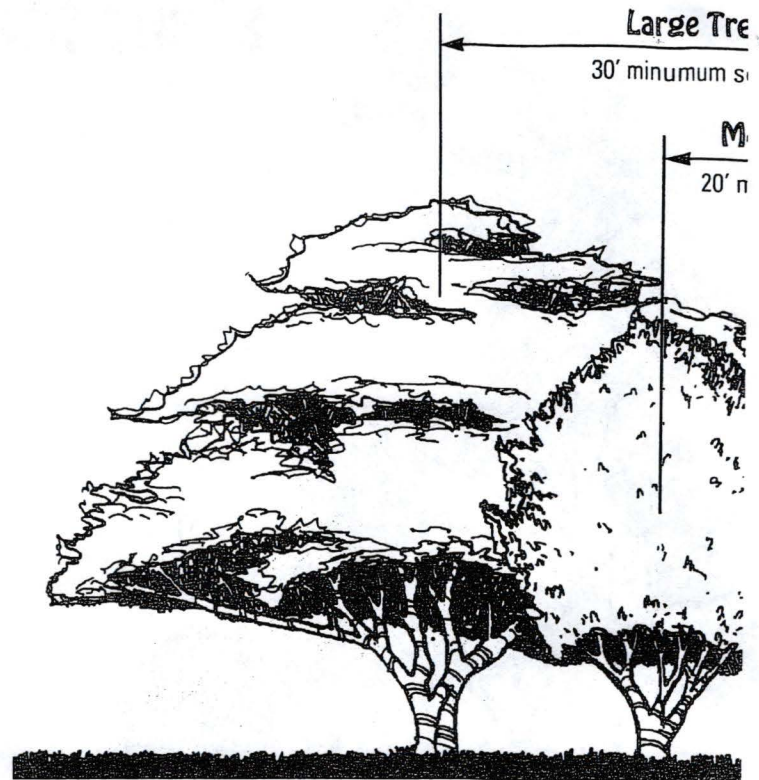
Less than 20' ht. at maturity  
Can be planted adjacent to powerlines  
For courtyards, patios, entryways, etc.

COMMON/BOTANICAL NAME	HEIGHT	COMMENTS
<b>*SWEET ACACIA</b> Acacia farnesiana	10'-15'	fragrant yellow flowers
<b>DWARF POINCIANA</b> Caesalpinia spp.	10'-15'	yellow-orange flowers large shrub, tropical
<b>WEeping BOTTLEBRUSH</b> Callistemon viminalis	15'-20'	red, bottlebrush flowers
<b>GLAUCUS CASSIA</b> Cassia surattensis	15'-20'	yellow flowers, tropical
<b>CITRUS: LEMON, ORANGE, ETC.</b> Citrus spp.	15'-20'	edible fruit, white flowers all, <b>except Grapefruit</b>
<b>*SILVER BUTTWOOD</b> Conocarpus erectus var. 'sericeus'	15'-20'	attractive gray foliage cold tolerant
<b>WHITE GEIGER/ TEXAS OLIVE</b> Cordia boissieri	10'-15'	showy white flowers cold tolerant
<b>*ORANGE GEIGER</b> Cordia sebestena	15'-20'	brilliant orange flowers
<b>LOQUAT</b> Eriobotrya japonica	15'-20'	edible orange fruit dark green foliage
<b>*STOPPERS</b> Eugenia spp.	15'-20'	understory trees good hedgerow screens
<b>*LIGNUM VITAE</b> Guaiacum sanctum	15'-20'	sky-blue flowers specimen tree
<b>HIBISCUS "Standards"</b> Hibiscus spp.	10'-15'	red, pink, yellow, or white flowers, tropical
<b>TREE JATROPHA</b> Jatropha spp.	15'-20'	crimson-red flowers, tropical
<b>CREPE MYRTLE</b> Lagerstroemia indica	15'-20'	red, pink, coral, or white flowers
<b>TREE LIGUSTRUM</b> Ligustrum spp.	15'-20'	small white flowers, dark green foliage
<b>JABOTICABA</b> Myrciaria caulifolia	15'-20'	edible fruit, attractive bark
<b>CHALCAS/ ORANGE JASMINE</b> Murraya paniculata	15'-20'	fragrant white flowers, trained as a tree
<b>*WAX MYRTLE</b> Myrica cerifera	15'-20'	tolerates wet soils, aromatic leaves when crushed
<b>OLEANDER "Standards"</b> Nerium oleander	15'-20'	pink, coral, or white flowers, very poisonous
<b>KOPSIA</b> Ochrosia elliptica	15'-20'	lobster-red berries, poisonous, attractive foliage
<b>FRANGIPANI</b> Plumeria rubra	15'-20'	coral, yellow, or white flowers, tropical
<b>YELLOW ELDER</b> Tecoma stans	15'-20'	brilliant yellow flowers tropical

## MEDIUM TREES

20'-30' ht. at maturity  
20' setback from powerlines  
For lawns, parks, shade, etc.

COMMON/BOTANICAL NAME	HEIGHT	COMMENTS
<b>ORCHID TREE</b> Bauhinia spp.	20'-30'	attractive orchid-like flowers, white, pink, purple
<b>*PITCH APPLE</b> Clusia rosea	25'-30'	handsome foliage excellent medium street tree
<b>*PIGEON PLUM</b> Coccoloba diversifolia	25'-30'	attractive native, provides food for wildlife
<b>*SEAGRAPE</b> Coccoloba uvifera	20'-30'	salt tolerant native provides food for wildlife
<b>*DAHOON HOLLY</b> Ilex cassine	25'-30'	attractive red berries, tolerates wet soils
<b>*BLACK IRONWOOD</b> Krugiodendron ferreum	20'-30'	attractive slow growing native, very dense wood
<b>SABICU</b> Lysiloma latisiliqua	20'-30'	slender tree w/fine foliage
<b>MADAGASCAR OLIVE</b> Noronhia emarginata	20'-30'	upright, open tree w/ attractive dark green leaves
<b>JERUSALEM THORN</b> Parkinsonia aculeata	20'-30'	feathery transparent tree w/small yellow flowers
<b>ALLSPICE</b> Pimenta dioica	15'-30'	attractive tree w/dark green aromatic leaves
<b>PODOCARPUS</b> Podocarpus spp.	20'-30'	handsome evergreen tree, yew-like appearance
<b>YELLOW TABEBUIA/SILVER TRUMPET</b> Tabebuia caraiba	20'-30'	striking yellow flowers w/crooked corky trunk
<b>PINK TABEBUIA</b> Tabebuia heterophylla	20'-30'	attractive pink flowers



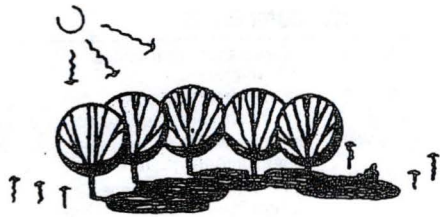
## SMALL PALMS

Less than 20' ht. at maturity  
Can be planted adjacent to powerlines  
For courtyards, patios, entryways, etc.

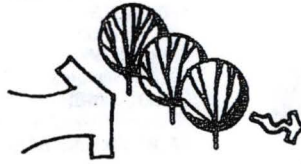
COMMON/BOTANICAL NAME	HEIGHT	COMMENTS
<b>PINDO PALM</b> Butia capitata	10'-15'	blue-gray foliage, cold tolerant feather palm
<b>CAT PALM</b> Chamadorea cataractarum	5'-10'	handsome clumping feather palm
<b>BAMBOO PALM</b> Chamadorea spp.	10'-15'	partial shade, clumping feather palms
<b>EUROPEAN FAN PALM</b> Chamaerops humilis	5'-10'	attractive, cold tolerant fan palm
<b>ARECA PALM</b> Chrysalidocarpus lutescens	15'-20'	good hedgerow screen, clumping feather palm
<b>*SILVER PALM</b> Coccothrinax argentata	15'-20'	silver-gray foliage, attractive fan palm
<b>BOTTLE PALM</b> Hyophorbe lagencaulis	10'-15'	bottle-shaped trunk, feather palm
<b>SPINDLE PALM</b> Hyophorbe verschaffeltii	15'-20'	attractive thick trunk, feather palm
<b>PYGMY DATE PALM</b> Phoenix roebellini	15'-20'	attractive feather palm, long spines, single or multi-trunk
<b>MAJESTY PALM</b> Ravenea glauca	15'-20'	interesting thick trunk, feather palm
<b>*NEEDLE PALM</b> Rhapidophyllum hystrix	5'-10'	cold tolerant, palmate, clumping palm
<b>LADY PALM</b> Rhapis excelsa	10'-15'	partial shade, palmate, clumping palm
<b>*DWARF PALMETTO</b> Sabal minor	10'-15'	cold tolerant, fan palm
<b>*SAW PALMETTO</b> Serenoa repens	10'-15'	cold tolerant, green and silver varieties, fan palm
<b>*THATCH PALM</b> Thrinax spp.	15'-20'	single-stemmed fan palms, T. morrisii & T. radiata
<b>CHRISTMAS PALM</b> Veitchia merrillii	15'-20'	red berries, 'LY', attractive feather palm



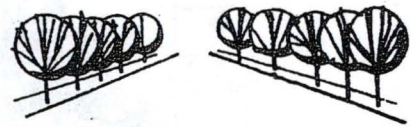
## WHY PLANT? Trees and Palms



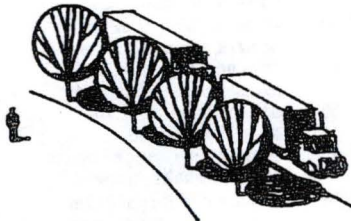
provide shade and cool the air ...



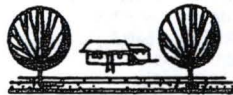
act as wind breaks ...



enhance the streetscape ...



screen objectionable views ...



frame views ...



soften architecture ...



act as a backdrop.

## WHY FPL TRIMS TREES

Not all trees are planted in "the right place." Often large trees will grow into close proximity of power lines requiring trimming away from FPL's lines.

Power line maintenance, including tree removal and trimming, benefits everyone by reducing power outages. A single tree that contacts a power line can interrupt electrical power to many people in an area. Overhanging limbs can break and fall into power lines. This is especially critical during storms or periods of high winds.

Overhead utility lines are the easiest to see and probably the ones we take most for granted. Although these lines look harmless enough, they can be dangerous.

Planting tall-growing trees under or near these lines will ultimately require pruning them away from the wires. This pruning may result in a tree having an unnatural appearance. Repeated pruning can lead to a shortened life span of the tree. Trees which must be pruned away from the power lines are under greater stress and more susceptible to insects and disease. Small, immature trees planted today can grow into problem trees in the future. Tall growing trees near overhead lines can cause service interruptions when trees contact wires. Children or adults climbing these trees can be severely injured or even killed if they come in contact with the wires. Proper selection and placement of trees in and around overhead utilities can eliminate potential public safety hazards, reduce expenses for utilities and their customers and improve the appearance of landscapes.

FPL utilizes professional tree crews trained to trim trees in a safe and technically correct manner. The National Arborists Association standards (NAA) and local tree trimming codes are used as guidelines.

Should a tree come in contact with a power line stay clear and call FPL at the number on the bottom of your bill.



## NUISANCE and PROBLEM TREES

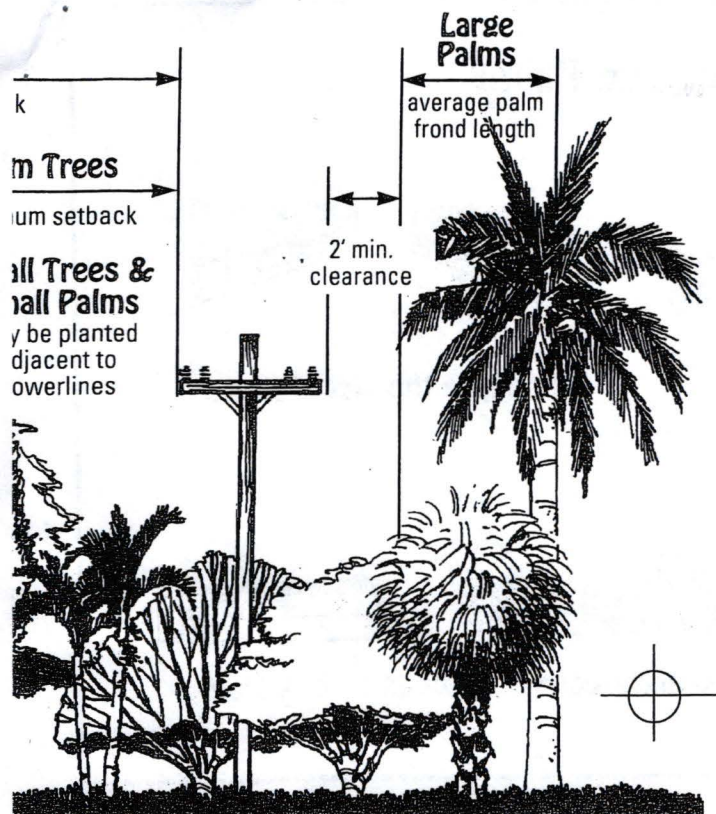
The following non-native problem trees are prohibited in some municipalities. They can be invasive, damage sidewalks, structures, or utilities, or may be extremely messy. Consult your local forester or agricultural extension agent to "Plant the Right Tree in the Right Place"

**EARLEAF ACACIA**  
**AUSTRALIAN PINE**  
**MELALEUCA**  
**BRAZILIAN PEPPER**  
**WOMAN'S TONGUE TREE**  
**NORFOLK ISLAND PINE**  
**TREE BAMBOO**  
**BISCHOFIA**  
**SCHEFFLERA**  
**EAR TREE**  
**EUCALYPTUS**  
**NON-NATIVE FICUS**  
**SILK OAK**  
**MAHOE**  
**CHINESE TALLOW TREE**  
**JAVA PLUM**  
**CORK TREE**

*Acacia auriculiformis*  
*Casuarina* spp.  
*Melaleuca quinquenervia*  
*Schinus terebinthifolius*  
*Albizia lebbek*  
*Araucaria heterophylla*  
*Bambusa vulgaris*  
*Bischofia javanica*  
*Brassaia actinophylla*  
*Enterolobium cyclocarpum*  
*Eucalyptus* spp.  
*Ficus* spp.  
*Grevillea robusta*  
*Hibiscus tiliaceus*  
*Sapium sebiferum*  
*Syzygium cumini*  
*Thespesia populnea*







## LARGE TREES

Greater than 30' at maturity  
30' setback from powerlines  
For canopy and shade, lawns, parks, etc.

### COMMON/BOTANICAL NAME HEIGHT COMMENTS

*RED MAPLE <i>Acer rubrum</i>	35'-50'	tolerates wet conditions cold tolerant
BLACK OLIVE <i>Bucida buceras</i>	40'-50'	yellow-green foliage, tannin stains are a problem
*GUMBO LIMBO <i>Bursera simaruba</i>	40'-60'	attractive mature red bark, handsome shade tree
CALOPHYLLUM/BEAUTY LEAF <i>Calophyllum</i> spp.	30'-45'	handsome shiny foliage <i>C. inophyllum</i> & <i>C. antillanum</i>
GOLDEN SHOWER TREE <i>Cassia fistula</i>	30'-40'	spectacular yellow flowers, tropical
PINK AND WHITE SHOWER TREE <i>Cassia javanica</i>	35'-50"	attractive pastel pink flowers, tropical
FLOSS SILK TREE <i>Chorisia speciosa</i>	35'-50'	attractive pink or white flowers, spines on trunk
*SATINLEAF <i>Chrysophyllum oliviforme</i>	30'-40'	shimmering leaves in wind, excellent specimen tree
*GREEN BUTTONWOOD <i>Conocarpus erectus</i>	30'-50'	upright, larger than the silver buttonwood
ROYAL POINCIANA <i>Delonix regia</i>	25'-40'	spectacular orange flowers, spreading habit, tropical
*STRANGLER FIG <i>Ficus aurea</i>	40'-50'	native <i>Ficus</i> , large shade tree, needs room to grow
*SHORTLEAF FIG <i>Ficus citrifolia</i>	40'-50'	native <i>Ficus</i> , large shade tree, needs room to grow
JAPANESE FERN TREE <i>Filicium decipiens</i>	25'-35'	interesting shaped foliage, somewhat spreading
*LOBLOLLY BAY <i>Gordonia lasianthus</i>	30'-40'	handsome upright tree, cold tolerant
*BLOLLY <i>Guapira discolor</i>	35'-50'	nicely shaped, handsome fruits, hammock pioneer
JACARANDA <i>Jacaranda mimosifolia</i>	40'-50'	attractive lavender-blue flowers, open habit
GOLDEN RAIN TREE <i>Koelreuteria elegans</i>	30'-50'	attractive yellow-sepia flowers, tropical
QUEEN'S CREPE MYRTLE <i>Lagerstroemia speciosa</i>	30'-45'	attractive pink, lavender flower clusters, tropical
*WILD TAMARIND <i>Lysiloma bahamensis</i>	40'-50'	tiny leaves, open habit, attractive trunk & branches
*SWEETBAY MAGNOLIA <i>Magnolia virginiana</i>	40'-60'	cold and wet tolerant
MANGO <i>Mangifera indica</i>	40'-60'	edible fruit, many varieties dense shade, tropical
*MASTIC TREE <i>Masticodendron foetidissimum</i>	45'-70'	tall remnant of the hammocks upright w/ whitish bark
YELLOW POINCIANA <i>Peltophorum pterocarpum</i>	40'-50'	attractive yellow flowers, spreading habit, tropical
AVOCADO <i>Persea americana</i>	40'-50'	edible fruit, many varieties tropical
*REDBAY <i>Persea borbonia</i>	50'-60'	aromatic leaves, shade tree or open lawns
*SLASH PINE <i>Pinus elliotii</i> var. "densa"	80'-90'	tall with dense crown, 2-3 needles per sheath 7"-12" long
*JAMAICAN DOGWOOD <i>Piscidia piscipula</i>	35'-50'	attractive lavender flowers
*LAUREL OAK <i>Quercus laurifolia</i>	60'-90'	tall, upright, short-lived cold tolerant native
*LIVE OAK <i>Quercus virginiana</i>	50'-60'	spreading, grand shade tree ideal for lawns, parks
*PARADISE TREE <i>Simarouba glauca</i>	35'-50'	large fast growing native, spreading habit
*WEST INDIAN MAHOGANY <i>Swietenia mahagoni</i>	35'-60'	excellent shade tree, spreading habit
*BALD CYPRESS <i>Taxodium distichum</i>	60'-90'	fresh water swamp habitats deciduous

## LARGE PALMS

Greater than 20' at maturity  
Plant at the average frond length plus 2' for minimum clearance from powerlines.  
(#) indicates average palm frond length

### COMMON/BOTANICAL NAME HEIGHT COMMENTS

*PAUROTIS/EVERGLADES PALM <i>Acoelorrhaphes wrightii</i> (5')	15'-25'	clumping native fan palm
ALEXANDRA PALM <i>Archontophoenix alexandrae</i> (7')	40'-45'	handsome feather palm
BISMARCK PALM <i>Bismarkia nobilis</i> (7')	30'-60'	striking blue-gray fan palm
FISHTAIL PALM <i>Caryota mitis</i> (8')	15'-25'	fish tail ends on fronds, clumping palm
COCONUT PALM <i>Cocos nucifera</i> (15')	60'-80'	king of palms, use "Maypan" or sim. resistant to "LY"
HURRICANE PALM <i>Dictyosperma album</i> (12')	25'-40'	handsome feather palm
BLUE LATANIA <i>Lantania loddigesii</i> (7')	20'-50'	attractive silver-blue fan palm
CHINESE FAN PALM <i>Livistonia chinensis</i> (7')	20'-30'	weeping fronds, handsome fan palm
TRIANGLE PALM <i>Neodrypis decaryi</i> (10')	15'-25'	three-sided exotic feather palm
DATE PALM <i>Phoenix dactylifera</i> (15')	60'-90'	tall feather palm
CANARY ISLAND DATE PALM <i>Phoenix canariensis</i> (15')	35'-50'	thick trunked feather palm
SENEGAL ISLAND DATE PALM <i>Phoenix reclinata</i> (10')	25'-35'	clumping, stately, feather palm
SOLITAIRE/ ALEXANDER PALM <i>Ptychosperma elegans</i> (8')	15'-25'	attractive, thin trunked feather palm
*ROYAL PALM <i>Roystonea regia</i> (15')	50'-70'	tall, majestic feather palm
*CABBAGE/ SABAL PALM <i>Sabal palmetto</i> (7')	45'-70'	state tree of Florida common fan palm
QUEEN PALM <i>Syagrus romanzoffianum</i> (12')	40'-45'	attractive feather palm
WASHINGTONIA PALM <i>Washingtonia robusta</i> (7')	50'-80'	handsome fan palm, reddish trunk when small
MACARTHUR PALM <i>Ptychosperma macarthuri</i> (8')	20'-30'	clumping feather palm

## SOUTH FLORIDA

\*Asterisk denotes plants native to south Florida  
Heights are as per "Xeriscape Plant Guide II."  
This list is not all-inclusive. Check with local agencies  
for appropriateness of species in your area.  
'LY' indicates susceptibility to lethal yellowing.

