



## FUTURE LAND USE ATLAS AMENDMENT STAFF REPORT AMENDMENT ROUND 25-B

### PLANNING COMMISSION PUBLIC HEARING, APRIL 11, 2025

#### A. Application Summary

##### I. General Data

---

<b>Project Name:</b>	<b>Park West Commerce South (LGA 2025-011)</b>
<b>FLUA Summary:</b>	<b>AGR to CMR/AGR</b>
<b>Acres:</b>	9.59 acres
<b>Location:</b>	Southeast corner of Atlantic Avenue and Persimmon Avenue
<b>Project Manager:</b>	Dorian Bellosa, Planner 1
<b>Applicant:</b>	Morningstar Nursery, Inc. (Paul Okean)
<b>Owner:</b>	Morningstar Nursery, Inc. (Paul Okean)
<b>Agent:</b>	JMorton Planning & Landscape Architecture
<b>Staff Recommendation:</b>	Staff recommends <b>approval</b> based upon the conclusions contained within this report.

##### II. Assessment & Conclusion

The 9.59 acre subject site is located in the Agricultural Reserve Tier, on the southeast corner of Atlantic Avenue and Persimmon Avenue. The subject site currently has agricultural and nursery uses. The amendment proposes to change the future land use (FLU) designation from Agricultural Reserve (AGR) to Commerce with an underlying Agricultural Reserve (CMR/AGR) in order to allow up to up 146,209 square feet (0.35 FAR) for light industrial uses. The applicant is proposing to change the zoning from AGR to Multiple Use Planned Development (MUPD) through the concurrent zoning application. The applicant is proposing 146,200 square feet (0.35 FAR) of warehouse with accessory office and includes the realignment of Persimmon Avenue and Starkey Road through the subject site, maintaining access for Delray Lakes Estates.

The CMR FLU designation established in 2022 affords opportunities for low-trip generating light industrial and/or employment uses, balancing the overarching objectives of the Agricultural Reserve while responding to increased residential growth and the corresponding needs of support services. The proposed amendment is consistent with the Commerce FLU designation criteria established by the Board, and allows for the development of a light industrial use on a parcel fronting Atlantic Avenue in close proximity to commercial and other non-residential uses. Therefore, staff is recommending approval.

### **III. Hearing History**

---

**Local Planning Agency:**

**Board of County Commissioners Transmittal Public Hearing:**

**State Review Comments:**

**Board of County Commissioners Adoption Public Hearing:**

T:\Planning\PlanningCommission\Agendas-Minutes\2025\04-11-25\III-A-4-Park-West-Commerce-South-PLC-rpt.docx

## B. Petition Summary

### I. Site Data

---

#### Current Future Land Use

<b>Current FLU:</b>	Agricultural Reserve (AGR)
<b>Existing Land Use:</b>	Nursery
<b>Current Zoning:</b>	Agricultural Reserve (AGR)
<b>Current Dev. Potential Max:</b>	Agricultural uses, up to 62,661 square feet (0.15 FAR)

#### Proposed Future Land Use Change

<b>Proposed FLU:</b>	Commerce with an underlying Agricultural Reserve (CMR/AGR)
<b>Proposed Use:</b>	Light Industrial
<b>Proposed Zoning:</b>	Multiple Use Planned Development (MUPD)
<b>Dev. Potential Max/Conditioned:</b>	Light Industrial uses, up to 146,209 square feet (0.35 FAR)

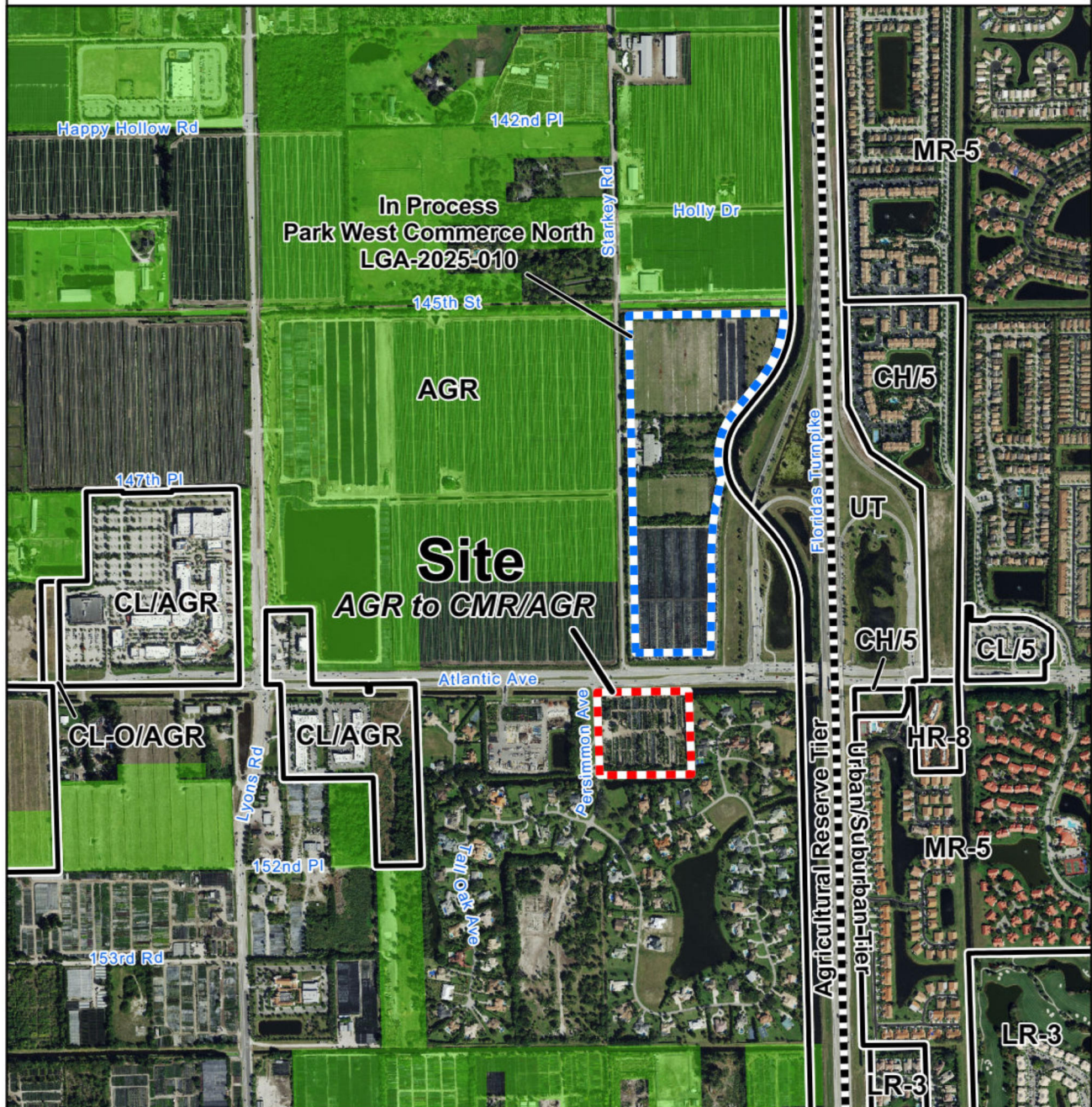
#### General Area Information for Site

<b>Tier:</b>	Agricultural Reserve Tier – No Change
<b>Utility Service:</b>	Palm Beach County Water Utilities Department
<b>Overlay/Study:</b>	Agricultural Reserve Master Plan
<b>Comm. District:</b>	Maria Sachs, District 5



# Future Land Use Atlas Amendment

## Park West Commerce South (LGA 2025-011)



### Site Data

Size: 9.59 acres  
 Existing Use: Nursery  
 Proposed Use: Light Industrial  
 Current FLU: AGR  
 Proposed FLU: CMR/AGR

### Future Land Use Designations

AGR	Agricultural Reserve	LR-3	Low Residential, 3 units/acre
CH/5	Commercial High, underlying MR-5	MLU	Multiple Land Use
CL-O/AGR	Commercial Low-Office, underlying AGR	MR-5	Medium Residential, 5 units/acre
CL/5	Commercial Low, underlying MR-5	UT	Utilities and Transportation
CL/AGR	Commercial Low, underlying AGR		
HR-8	High Residential, 8 units/acre		

Date: 12/20/2024  
 Contact: PBC Planning  
 Filename: T:\Planning\AMEND\25-B  
 Note: Map is not official, for presentation purposes only.

Site
Amendments in Process  
AGR Preserves
Tier Boundaries

350 0 350 700 Feet

**Planning, Zoning & Building**  
 2300 N. Jog Rd, WPB, FL 33411  
 Phone (561) 233-5300



## C. Introduction

### I. Intent of the Amendment

---

The 9.59 acre subject site is located in the Agricultural Reserve Tier, on the southeast corner of Atlantic Avenue and Persimmon Avenue.

**Background:** The subject site currently has accessory agricultural storage uses and nurseries. The site was the subject of a previous amendment, as described below:

- **Park West (fka Tenderly Reserve) Text Initiation.** In 2024, this privately proposed text amendment requested to revise Future Land Use Element (FLUE) policies regarding the Agricultural Reserve Tier, specifically to:
  - Add a third commercial mixed use intersection in the Tier;
  - Allow additional commercial and mixed uses to be located at the intersection of the Florida's Turnpike and Atlantic Avenue;
  - Establish the Mixed Use Center (MUC) Multiple Land Use (MLU) Option which permits projects to utilize 100% of the residential density (up to 12 units per acre) and commercial intensity calculated over the entire site with design elements and 25% workforce housing onsite;
  - Exempt the site from the commercial square footage cap;
  - Require 20% of the total land area over 16 acres to be provided as onsite preserve and allow water management tracts within the preserve area; and
  - Exempt the site from the long range traffic requirement within FLUE Policy 3.5-d.

The associated FLUA requested to change the future the land use from Agricultural Reserve (AGR) to Multiple Land Use with Commercial Low, Commerce and 12 units per acre (MLU, CL/CMR/12) on 61.19 acres. The proposed development included 734 multifamily units, a 150 room hotel and 200,000 square feet of commercial retail and office at the northeast corner of Atlantic Avenue and Starkey Road and 100,000 square feet of self-service storage or warehouse/office uses on the subject site. At the April 12, 2024 public hearing, the Planning Commission recommended denial of initiation in an 8 to 0 vote. On November 13, 2024, the applicant withdrew the amendment.

**Future Land Use Amendment.** The proposed future land use amendment request is to change the designation from Agricultural Reserve (AGR) to Commerce with underlying Agricultural Reserve (CMR/AGR). Currently, the site can be utilized for agricultural uses up to 62,661 square feet (0.15 FAR) of agricultural uses. The applicant is proposing up to 146,209 square feet (0.35 FAR) of light industrial uses as allowed by the Unified Land Development Code (ULDC).

**Associated Zoning Application.** There is a concurrent Zoning application in process (PDD-2025-00300) to rezone the subject site from Agricultural Reserve (AGR) to Multiple Use Planned Development (MUPD). The Control Number is 2024-00132. The site plan submitted in the zoning application (Exhibit 11) proposes 146,200 square feet (0.35 FAR) of light industrial uses including 142,700 square feet warehouse and 3,500 square feet accessory office.

## II. Background/History

---

### Agricultural Reserve Tier Background

In 1999, the County adopted the Managed Growth Tier system to recognize the County's diverse geographic regions and lifestyles by establishing tiers that have common densities/intensities and public service availability. The subject site is located within the Agricultural Reserve Tier, an area established to support very low residential density, as well as agricultural operations and equestrian uses. The Agricultural Reserve Tier consists of approximately 22,000 acres. The Agricultural Reserve Tier is located in the southern portions of the County between Florida's Turnpike and the Arthur R. Marshall National Wildlife Refuge.

The purpose of the Agricultural Reserve Tier is described in the Comprehensive Plan as Objective 1.5 below:

- **OBJECTIVE 1.5 The Agricultural Reserve Tier.** *Palm Beach County shall preserve the unique farmland and wetlands in order to preserve and enhance agricultural activity, environmental and water resources, and open space within the Agricultural Reserve Tier. This shall be accomplished by limiting uses to agriculture and conservation with residential development restricted to low densities and non-residential development limited to uses serving the needs of farmworkers and residents of the Tier. The Agricultural Reserve Tier shall be preserved primarily for agricultural use, reflecting the unique farmlands and wetlands within it.*

The Tier was formally designated as the Agricultural Reserve in the 1980 Comprehensive Plan with an emphasis on the preservation of agriculture. In 1998, the BCC directed development of a Master Plan for the Agricultural Tier which established a goal to *preserve and enhance agricultural activity and environmental and water resources in the Agricultural Reserve, and produce a master development plan compatible with this goal*. The BCC did not adopt the Master Plan, but adopted amendments to the Comprehensive Plan in Round 01-1 incorporating the majority of the recommendations of the final Master Plan.

### A. Pre-Agricultural Reserve Master Plan

There are approximately 64 acres of industrially designated properties fronting the north and south sides of Atlantic Avenue east of State Road 7 that pre-date the Master Plan.

### B. Agricultural Reserve Master Plan Industrial Recommendations

At the time of the creation of the Agricultural Reserve Master Plan, the consultants recommended that industrial uses be allowed in the Agricultural Reserve, using the Economic Development Center (EDC) future land use designation. The consultants identified two locations, within 1/4 mile of the Florida's Turnpike interchanges with Boynton Beach Boulevard and Atlantic Avenue, as appropriate locations for these Economic Development Centers. The consultants recommended requiring developers set aside preserve areas in the same 60/40 ratio as the Traditional Marketplace (TMD), which had locations identified at the intersections of Lyons Road with Boynton Beach Boulevard and Atlantic Avenue. The Master Plan Phase II Report recommended that two employment centers shared a maximum of 330,000 square feet of industrial development between the two locations, and that there be an additional 245,000 square feet of office park uses in the Tier. Master Plan Phase II, Section 4.3.4.5 Economic Centers, states that allowing employment centers in the Tier would provide the following:



- *“A greater variety in job opportunities for the residents of the Ag Reserve than are likely to be found elsewhere in the Ag Reserve. These opportunities could reduce traffic impacts outside of the Ag Reserve.*
- *A location for businesses that can offer farmers a second job if they need to supplement their income.*
- *Light industrial uses in two locations that will have the least negative impact on agricultural uses.”*

The Consultants identified the following uses as appropriate within the Employment Centers:

Automobile Rentals	Laboratories
Auto Repair, Detailing, Paint and Body Shop	Landscaping Services
Bottling Plant	Light Fabrication
Brewery	Lumber yards
Broadcasting Stations for Radio or TV	Machine or Welding Shops
Cabinet Working and Carpentry	Mini Warehouse/Self Storage
Catering Services	Motion Picture production Studios
Contractor’s Storage Yards	Ornamental Metal Workshops
Farm Equipment Repair	Printing Shops
Glass Installation Services	Technical Trade Schools
Gun Clubs, Enclosed	Utility Work Centers, Power & Communications

The staff recommendation in the Addendum supported this concept, stating: *“The Plan should be amended to acknowledge the ability to utilize the Economic Development Center category for industrial uses in the locations recommended by the Consultant.”*

### **C. Agricultural Reserve Policies – Board Direction**

Upon the conclusion of the Master Planning effort, the BCC did not concur with the consultant’s recommendations on industrial land use, and directed that no new industrial future land use designations be permitted in the Agricultural Reserve. Consequently, the 2001 Comprehensive Plan amendment to adopt policies implementing the Master Plan did not establish any policies for new industrial lands. The only provision was related to the 0.45 floor area ratio for the 64 acres of land with industrial future land use that predated the Master Plan, located along the north and south sides of Atlantic Avenue, east of State Road 7.

Since 2016, there have been many requests for text and/or future land use amendments seeking an industrial type future land use designation in the Agricultural Reserve Tier, which are summarized (in Exhibit 9). In May 5, 2021, the BCC transmitted a future land use amendment request for industrial in the Tier, known as Sunflower Light Industrial (LGA 2021-016). Staff consistently recommended denial of new Industrial FLU requests as there were no policies in the Comprehensive Plan directing the appropriate uses, locations, and intensity for industrial in the AGR Tier. Under discussion of the item, the BCC directed staff to explore the concept of a new light industrial future land use designation and to return for a workshop to discuss additional industrial future land uses in the Tier. Subsequently, the Board adopted the Sunflower amendment on July 28, 2021 with additional conditions limiting the uses to light industrial.

## **D. County-Initiated Text Amendment for the Commerce Future Land Use**

Following the Board's direction on May 5, 2021 for staff to explore a new light industrial future land use designation, staff returned to the Board on October 26, 2021 and continuation on November 3, 2021 for a workshop regarding the Agricultural Reserve Tier. The discussion of a new industrial future land use was one of many topics discussed that day. At the workshop, the Board expressed support for the Commerce (CMR) future land use designation within the Tier that would be limited to "light industrial" uses. On February 2, 2022, the Board initiated text amendments to the Comprehensive Plan for staff to proceed with the review and analysis of the new Commerce future land use designation. Subsequently, staff returned on May 4, 2022 with proposed text amendments that included policy guidance for future industrial requests to define the appropriate site attributes for requests to CMR FLU and to add a preserve requirements. The text amendment was transmitted the Board and subsequently adopted on August 25, 2022. Since the adoption of the Commerce FLU in August 2022, there have been several Board discussions concerning the square footage potential of light industrial uses within the Ag Reserve. Based on Board direction, a County-initiated amendment is in process to modify the maximum allowable floor area ratio within the Tier from 0.45 to 0.35, and includes further clarification of existing location criteria. The amendment was transmitted by the Board on May 3, 2023 in a 5 to 2 vote. Subsequently, on August 30, 2023, the Board adopted the revised policies and the 0.35 maximum FAR will apply to new applications requesting the CMR designation.

## **III. Data and Analysis Summary**

---

This section of the report provides a summary of the consistency of the amendment with the County's Comprehensive Plan. The chapters in Exhibit 2 detail the consistency of the amendment with Plan policies, including justification, compatibility, public facilities impacts, intergovernmental coordination, and consistency with specific overlays and plans.

- A. Overview of the Area.** West of the Florida's Turnpike, the Atlantic Avenue corridor consists of a mix of future land use designations on the north and south of the road including Agricultural Reserve (AGR) and Commercial Low (CL). Commercial uses are primarily located at the intersection of Atlantic Avenue and Lyons Road. To the east and south adjacent to the site there are single family homes in the Delray Lakes Estates community. Currently, there is one additional amendment in process in the immediate area.
- **Park West Commerce North (LGA 2025-010)** – Directly North of the subject site, at the northeast corner of Atlantic Avenue and Starkey is an amendment in process to change 50.99 acre land from Agricultural Reserve (AGR) to Commerce with underlying AGR (CMR/AGR) in order to develop up to 777,394 square feet of light industrial uses. This amendment is scheduled for the April 11, 2025 Planning Commission and May 13, 2025 BCC Transmittal Hearing.
- B. Appropriateness of the Amendment.** The Commerce FLU designation and implementing policies provide a framework guiding the extent and location of light industrial uses within the Agricultural Reserve Tier. While the subject site is eligible to request the Commerce FLU designation, it is located along a segment of Atlantic Avenue in the portion of the Ag Reserve which primarily supports agricultural and residential uses. The subject site meets the minimum requirements of the CMR FLU designation (as further discussed later in this report), and allows opportunities for low-trip generating light industrial and/or employment generating uses. The proposed amendment will allow for the



development of a light industrial use on a parcel fronting Atlantic Avenue proximity to an established commercial node.

- C. Compatibility.** This site is located on the west side of the Florida's Turnpike on the southeast corner of Atlantic Avenue and Persimmon Avenue. To the south and east of the subject site are 96 single family homes, with a density of 0.74 units per acre known as Delray Lakes Estates with an Agricultural Reserve (AGR) future land use designation and with a Residential Estate (RE) zoning district. Further to the east, across the Florida's Turnpike, are urban land uses within the Urban/Suburban Tier including commercial and medium to high residential designations. In addition, there is existing commercial development at the commercial node located at the intersection of Atlantic Avenue and Lyons Road along with additional parcels with CL and Commercial Low Office (CL-O) future land use designations along the corridor.

The request is to change the Future Land Use from Agricultural Reserve to Commerce with underlying Agricultural Reserve. The applicant indicates the site will be utilized to support future light industrial uses. The CMR FLU and implementing policies establish specific policy requirements dictating the size, location, frontage and access, thereby guiding where these types of industrial and allowable nonresidential uses may be considered. As the site meets the criteria for CMR FLU and is generally consistent with the development pattern of the corridor, staff finds that the subject request is compatible.

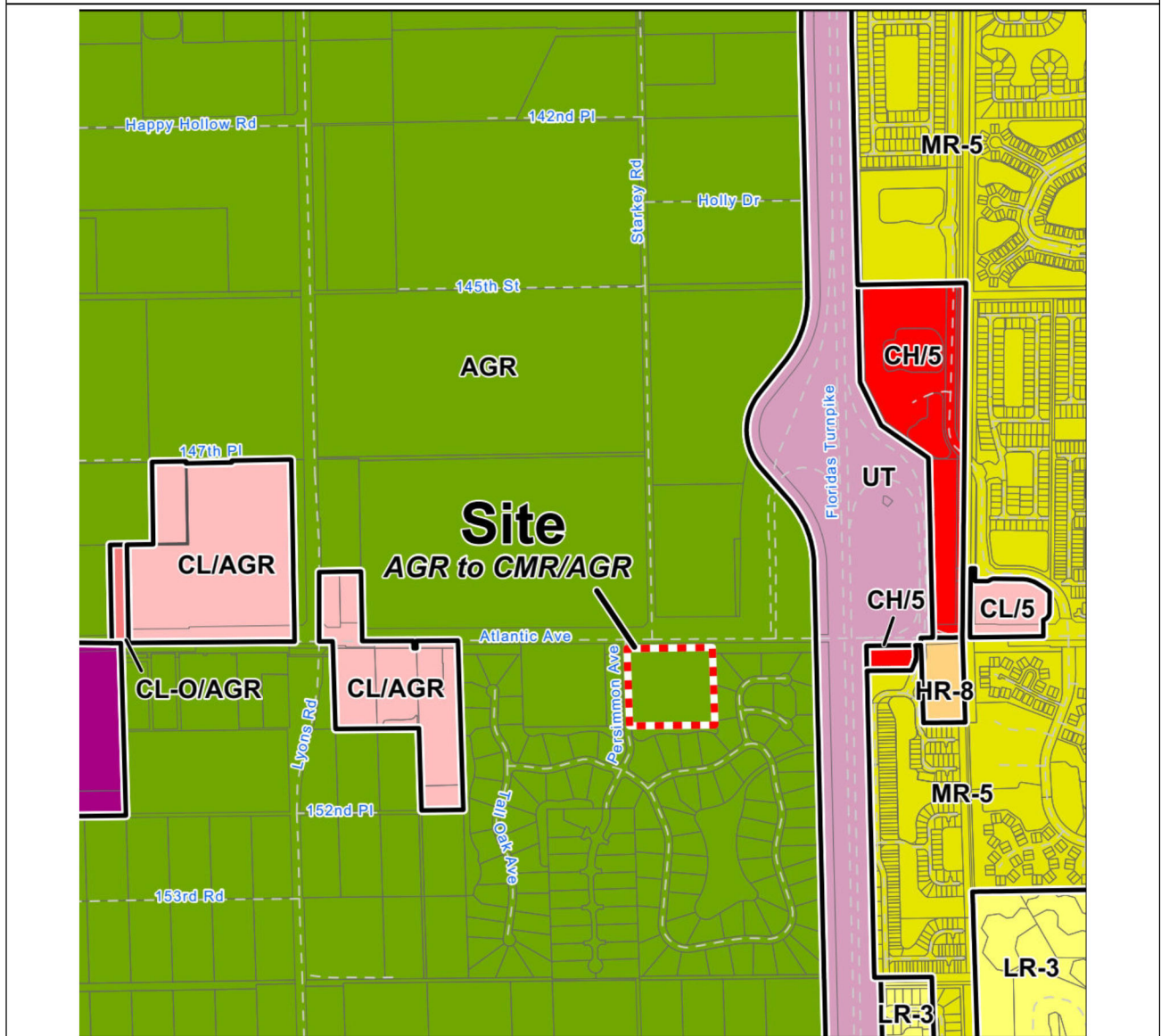
- D. Assessment and Recommendation.** The 9.59 acre subject site is located in the Agricultural Reserve Tier, on the southeast corner of Atlantic Avenue and Persimmon Avenue. The subject site currently has agricultural and nursery uses. The amendment proposes to change the future land use (FLU) designation from Agricultural Reserve (AGR) to Commerce with an underlying Agricultural Reserve (CMR/AGR) in order allow up to up 146,209 square feet (0.35 FAR) for light industrial uses. The applicant is proposing to change the zoning from AGR to Multiple Use Planned Development (MUPD) through the concurrent zoning application. The applicant is proposing 146,200 square feet (0.35 FAR) of warehouse with accessory office and includes the realignment of Persimmon Avenue and Starkey Road through the subject site.

The CMR FLU designation established in 2022 affords opportunities for low-trip generating light industrial and/or employment uses, balancing the overarching objectives of the Agricultural Reserve while responding to increased residential growth and the corresponding needs of support services. The proposed amendment is consistent with the Commerce FLU designation criteria established by the Board, and allows for the development of a light industrial use on a parcel fronting Atlantic Avenue in close proximity to commercial and other non-residential uses. Therefore, staff is recommending approval.

<b>Exhibits</b>	<b>Page</b>
1. Future Land Use Map & Legal Description	E-1
2. Consistency with Comprehensive Plan	E-3
3. Applicant's Justification/Consistency with Comprehensive Plan & Florida Statutes	E-12
4. Applicant's Public Facility Impacts Table	E-21
5. Palm Beach County Traffic Division Letter	E-23
6. Water & Wastewater Provider LOS Letter	E-25
7. Applicant's Disclosure of Ownership Interests	E-26
8. Urban Sprawl Analysis	E-30
9. Industrial and Commerce Amendment History	E-32
10. Agricultural Reserve Commerce Amendments Map	E-36
11. Submitted Zoning Application Site Plan (dated 2/19/25)	E-37
12. Correspondence	E-38

## Exhibit 1

<b>Amendment No:</b>	<b>Park West Commerce South (LGA 2025-011)</b>
<b>FLUA Page No:</b>	98
<b>Amendment:</b>	From Agricultural Reserve (AGR) to Commerce with an underlying Agricultural Reserve (CMR/AGR)
<b>Location:</b>	Southeast corner of Atlantic Avenue and Persimmon Avenue
<b>Size:</b>	9.59 acres approximately
<b>Property No:</b>	00-42-46-20-01-000-0070
<b>Conditions:</b> The proposed future land use amendment and the proposed rezoning shall be considered for adoption by the Board of County Commissioners at the same public hearing.	



## Legal Description

---

TRACTS 7 AND 8, IN SECTION 20, TOWNSHIP 46 SOUTH, RANGE 42 EAST, THE PALM BEACH FARMS CO. PLAT NO. 1, ACCORDING TO THE PLAT THEREOF AS RECORDED IN PLAT BOOK 2, PAGE 26, PUBLIC RECORDS OF PALM BEACH COUNTY, FLORIDA, AND LESS THE NORTH 55.15 FEET THEREOF. CONTAINING APPROXIMATELY 9.59 ACRES, MORE OR LESS.

## Exhibit 2

### Consistency with Comprehensive Plan

---

This Exhibit examines the consistency of the amendment with the County's Comprehensive Plan, Tier Requirements, applicable Neighborhood or Special Area Plans, and the impacts on public facilities and services.

#### A. Consistency with the Comprehensive Plan - General

1. **Justification - FLUE Policy 2.1-f:** *Before approval of a future land use amendment, the applicant shall provide an **adequate justification** for the proposed future land use and for residential density increases **demonstrate that the current land use is inappropriate**. In addition, the County shall review and make a determination that the proposed future land use is compatible with existing and planned development in the immediate vicinity and shall evaluate its impacts on:*

1. *The natural environment, including topography, soils and other natural resources; (see Public Facilities Section)*
2. *The availability of facilities and services; (see Public Facilities Section)*
3. *The adjacent and surrounding development; (see Compatibility Section)*
4. *The future land use balance;*
5. *The prevention of urban sprawl as defined by 163.3164(51), F.S.; (See Consistency with Florida Statutes)*
6. *Community Plans and/or Planning Area Special Studies recognized by the Board of County Commissioners; and (see Neighborhood Plans and Overlays Section)*
7. *Municipalities in accordance with Intergovernmental Coordination Element Objective 1.1. (See Public and Municipal Review Section)*

The applicant provides a Justification Statement (Exhibit 3) which states that:

- “Commercial-Low (CL) designations have been established at the intersection of Lyons Rd. and Atlantic Ave, approximately 0.25 miles to the west of the Property and Industrial future land use designations on a string of properties beginning approximately one (1) mile west of the Property. This location is more compatible with commercial or industrial land use as it sits approximately 500 feet to the west of the interchange with Atlantic Ave. and Florida's Turnpike.”
- “The recently approved industrial uses throughout the Agriculture Reserve Tier signify a change in circumstances of the area. All of these changes allow for additional businesses to serve the needs of the growing number of residents moving to the Agricultural Reserve as well as to complement the existing agricultural uses. These changes indicate the Agricultural Reserve has continued to change from a rural agricultural area to a suburban community with a growing population that needs various services and goods within proximity of their homes.”
- “The proposed Future Land Use amendment to Commerce will create another opportunity for a services not currently located within the Tier. This opportunity would ultimately meet the intent of the Master Plan that has yet to be realized by the current limited development pattern.”

**Staff Analysis:** This policy is the umbrella policy over the entire FLUA amendment analysis and many of the items are addressed elsewhere in this report as identified above. With regards to justification, there are several themes presented by this amendment that are discussed individually.

The subject site has a current development potential of a maximum 62,661 square feet (0.15 FAR) of non-residential uses allowed in the AGR FLU designation. The applicant proposes to change the land use designation to CMR/AGR in order to develop up to 146,209 square feet (0.35 FAR) of light industrial uses.

With regard to the justification, the applicant states that the requested FLU amendment is appropriate as residential and commercial development in the Agricultural Reserve Tier has created a need for light industrial uses to support them, located near the residents and businesses they will serve. Approved Industrial FLUs are primarily located along Atlantic Avenue and limited locations west of State Road 7. The site's location in proximity to non-residential uses with access to Atlantic Avenue allows for the potential of appropriately located light industrial uses which could serve the residents of the Tier.

The established CMR FLU designation and implementing policies provide a framework for the future of light industrial uses within the Agricultural Reserve Tier. The subject site meets the minimum requirements of the CMR FLU designation (as further discussed later in this report), and is located near the interchange of Atlantic Avenue and the Florida's Turnpike and in proximity to other non-residential uses along the corridor. Given the information provided, the applicant has provided sufficient justification.

2. **County Directions - FLUE Policy 2.1-g:** *The County shall use the County Directions in the Introduction of the Future Land Use Element to guide decisions to update the Future Land Use Atlas, provide for a distribution of future land uses in the unincorporated area that will accommodate the future population of Palm Beach County, and provide an adequate amount of conveniently located facilities and services while maintaining the diversity of lifestyles in the County.*

**Direction 1. Livable Communities.** *Promote the enhancement, creation, and maintenance of livable communities throughout Palm Beach County, recognizing the unique and diverse characteristics of each community. Important elements for a livable community include a balance of land uses and organized open space, preservation of natural features, incorporation of distinct community design elements unique to a given region, personal security, provision of services and alternative transportation modes at levels appropriate to the character of the community, and opportunities for education, employment, health facilities, active and passive recreation, and cultural enrichment.*

**Direction 2. Growth Management.** *Provide for sustainable communities and lifestyle choices by: (a) directing the location, type, intensity, timing and phasing, and form of development that respects the characteristics of a particular geographical area; (b) requiring the transfer of development rights as the method for most density increases; (c) ensuring smart growth, by protecting natural resources, preventing urban sprawl, providing for the efficient use of land, balancing land uses; and, (d) providing for facilities and services in a cost efficient timely manner.*

**Direction 4. Land Use Compatibility.** *Ensure that the densities and intensities of land uses are not in conflict with those of surrounding areas, whether incorporated or unincorporated.*



**Direction 15. Agricultural and Equestrian Industries.** *Support and enhance agriculture and equestrian-based industries.*

**Staff Analysis:** The County's Managed Growth Tier System is the primary vehicle by which the County Directions are realized. As previously mentioned, the Tier System identifies distinct geographic areas, which together offer lifestyle choices for all residents, and allow for sustainable communities. The intent of the Agricultural Reserve Tier is to preserve and enhance agricultural activity, environmental and water resources, and open space. The adopted Agricultural Reserve provisions implement that objective by limiting development to low densities and requiring clustering, requiring preserve areas, and limiting the location and amount of non-residential development to serve the existing and future residents of the Tier. These provisions primarily promote the "Agricultural and Equestrian Industries" Direction, while balancing this direction with "Livable Communities," "Growth Management," "Land Use Compatibility," and other County directions.

The established CMR FLU and related industrial policies provide opportunities for low-trip generating light industrial and/or employment generating uses, thus balancing the objectives of the Agricultural Reserve while responding to increased residential growth and the corresponding needs of support services. Consistent with Direction 4 , the proposed amendment will allow for the development of light industrial fronting Atlantic Avenue on a site located along a corridor with established commercial nodes identified within the Comprehensive Plan. In regard to supporting agricultural industries, the proposed CMR would remove agricultural uses currently on the site.

3. **Piecemeal Development – FLUE Policy 2.1-h:** *The County shall not approve site specific Future Land Use Atlas amendments that encourage piecemeal development or approve such amendments for properties under same or related ownership that create residual parcels. The County shall also not approve rezoning petitions under the same or related ownership that result in the creation of residual parcels.*

**Staff Analysis:** There are no other parcels under the same or related ownership adjacent to the subject site that are not included in the proposed amendment whereby residual parcels would be created. Therefore, the proposed amendment would not constitute piecemeal development.

4. **Residual Parcel – FLUE Policy 2.1-i:** *As a means of promoting appropriate land development patterns the County shall discourage the creation of residual parcels within or adjacent to a proposed development. If such a situation is identified, and the residual parcels cannot be eliminated, then the development shall be designed to allow for inter-connectivity with the residual parcels through various techniques including, but not limited to, landscaping and pedestrian and vehicular access. In addition, the future land use designation and/or zoning district of the residual parcel shall also be considered by the Board of County Commissioners, concurrently with the development, to ensure that an incompatibility is not created.*

**Staff Analysis:** The Comprehensive Plan's Introduction and Administration Element defines residual parcels as "a property under the same or related ownership that has been left out of a development area, resulting in a parcel which has limited development options and connections to surrounding properties." There are no additional parcels under the same or related ownership that are not included in this amendment. Therefore, the amendment is consistent with this policy.

5. **FLUE Policy 2.2.4-c: Industrial Future Land Use Designations.** *The three Industrial future land use designations are intended to accommodate industrial uses which are defined as uses engaged in the manufacturing, assembly, processing, research and development, wholesale distribution, or storage of products, related uses and services, including Office of an Industrial Nature (as defined by the Introduction and Administration Element).*

1. **Industrial.** *The Industrial (IND) future land use designation allows the full range of industrial activities ranging from light to heavy industry.*
2. **Economic Development Center.** *The Economic Development Center (EDC) future land use designation is intended to accommodate employment opportunities, research parks, and Employment Centers (as defined by the Introduction and Administration Element). Properties with an EDC designation are intended to be developed as planned developments in order to promote internal circulation and buffering from surrounding land uses. Industrial uses allowed shall be limited to those that demonstrate Light Industrial characteristics.*
3. **Commerce.** *The Commerce (CMR) future land use designation is intended to accommodate light industrial uses to provide an option for low-trip generating non-residential and/or employment generating uses on arterial roadways. Industrial uses allowed shall be limited to those that demonstrate Light Industrial characteristics.*

**Staff Analysis:** Prior to the adoption of the CMR FLU designation in 2022, the Comprehensive Plan recognized only two Industrial land use designations – Industrial (IND) and Economic Development Center (EDC). With the addition of the CMR FLU, the Comprehensive Plan now provides a land use designation that allows opportunities for light industrial and limited non-residential uses to locate, subject to criteria intended to minimize potential negative externalities as described in the next policy, 2.2.4-d.

6. **FLUE Policy 2.2.4-d: Industrial Uses.** *Industrial uses shall be considered either Light or Heavy as defined below.*

**Light Industrial.** *Light industrial development's typical operation is not likely to cause undesirable effects, danger or disturbance upon nearby areas and typically does not create negative impacts on immediately adjoining uses. These uses typically do not cause or result in the dissemination of dust, smoke, fumes, odor, noise, vibration light, or other potentially objectionable effects beyond the boundaries of the lot on which the use is conducted. Examples of Light Industrial uses include: storage, warehouse, research, laboratories, dispatch, landscape service, flex space, media production, and light manufacturing and processing.*

**Heavy Industrial.** *Heavy industrial development's typical operation may cause or result in the dissemination of dust, smoke, fumes, odor, noise, vibration, light, or other potentially objectionable effects beyond the boundaries of the lot on which the use is conducted. These effects will be minimized through the application of performance standards established in the Unified Land Development Code. Heavy industrial uses include those that engage in the processing, manufacturing, or storage of flammable, hazardous, or explosive materials or products, or processes which potentially involve hazardous or commonly recognized offensive conditions. Examples of heavy industrial uses include, but are not limited to, salvage and junkyards, storage of regulated substances, asphalt and*

*concrete mixing and product manufacturing, heavy manufacturing, construction and demolition recycling, and equestrian waste management.*

**Staff Analysis:** The Comprehensive Plan establishes that there are two overall classifications of Industrial uses as provided in Policy 2.2.4-d: Light Industrial and Heavy Industrial. However, only the Industrial future land use designation, which allows the full range of industrial uses, was previously allowed within the Agricultural Reserve Tier. Through the adopted CMR text amendment, this policy now includes specific examples of each Industrial category, further refining what is Light Industrial versus Heavy Industrial. As the CMR FLU is limited to specific nonresidential uses or industrial uses categorized as Light Industrial defined by this policy, and further implemented in the ULDC in Article 4 for the Light Industrial (IL) zoning district with a CMR designation and for the Multiple Use Planned Development zoning with a CMR designation, the proposed site-specific amendment for a light industrial use is consistent with this policy.

## **B. Consistency with Agricultural Tier Policies**

Future Land Use Element Objective 1.1, Managed Growth Tier System, states that *“Palm Beach County shall implement the Managed Growth Tier System strategies to protect viable existing neighborhoods and communities and to direct the location and timing of future development within 5 geographically specific Tiers...”*

### **OBJECTIVE 1.5 The Agricultural Reserve Tier**

1. **Objective:** *Palm Beach County shall preserve the unique farmland and wetlands in order to preserve and enhance agricultural activity, environmental and water resources, and open space within the Agricultural Reserve Tier. This shall be accomplished by limiting uses to agriculture and conservation with residential development restricted to low densities and non-residential development limited to uses serving the needs of farmworkers and residents of the Tier. The Agricultural Reserve Tier shall be preserved primarily for agricultural use, reflecting the unique farmlands and wetlands within it.*

**Staff Analysis:** The primary objective of the Agricultural Reserve Tier is the preservation of agricultural and environmental lands, while allowing for development in a planned manner that is consistent with the Master Plan and associated policies within the Comprehensive Plan that direct the locations and amounts of allowable development. The Tier is located within a Limited Urban Service Area, (LUSA) and the development allowed within the Tier as part of one of the planned development options or on non-residentially designated sites is consistent with the objective of the Agricultural Reserve Tier. The CMR FLU and implementing policies adopted by the Board further refine the various types of allowable industrial uses, and guide the location and extent of future industrial uses within the Agricultural Reserve Tier. The site is located along an urban principal arterial roadway and in close proximity to existing nonresidential uses, consistent with the development pattern of the corridor.

2. **Industrial in the Ag Reserve Tier – FLUE Policy 1.5-v:** *The County shall foster employment opportunities in the Agricultural Reserve Tier by allowing light industrial uses at appropriate locations adjacent to specified roadways to provide a balance of land uses for current and new residents of the Tier. All new future land use amendments requesting industrial type uses in the Agricultural Reserve Tier shall meet the following requirements:*

1. *Limited to the Commerce (CMR) future land use designation;*

2. *Located with frontage and access on State Road 7 (north of Rio Grande Avenue), Atlantic Avenue, Boynton Beach Boulevard or have access to these roadways through an existing commercial or industrial site. Sites located west of State Road 7 along the Boynton Beach Boulevard (100<sup>th</sup> Street South) and Atlantic Avenue corridors must share a common border with a property with commercial or industrial future land use;*
3. *Be accompanied by a concurrent zoning application and conceptual site plan in order to demonstrate that the proposal meets the design, scale, and character requirements of the Tier;*
4. *Have a minimum of 3 acres and a maximum of 50 acres (with the exception of lands dedicated to rights of way); and*
5. *Preserve shall be required for Commerce sites utilizing Light Industrial, Multiple Use Planned Development, or Planned Industrial Park Development zoning pursuant to FLUE Policy 1.5.1-q, subject to the following exceptions:*
  - a. *The preserve area requirements shall be based upon the acreage over 16 acres, shall be a minimum of 40% of the total land area over 16 acres, and allow water management tracts in preserve areas contiguous to the development area that provide enhanced environmental features and improved water quality as demonstrated through the future land use amendment process.*

**Staff Analysis:** FLUE Policy 1.5.-v establishes requirements for new industrial future land use requests within the Agricultural Reserve Tier. New applications requesting a FLU amendment to develop industrial uses shall be limited to the Commerce FLU designation only and satisfy the minimum requirements of this policy. The site has frontage on Atlantic Avenue. The applicant is proposing access to the warehouse use from the realigned Persimmon Avenue connecting to Atlantic Avenue through right-of-way dedication. It is accompanied by a concurrent zoning application request (PDD-2025-00300) proposing to change the zoning from AGR to Multiple Use Planned Development (MUPD). The site is a total of 9.59 acres and meets the acreage threshold as it is more than 3 acres but less than 50. In addition, as the site is less than 16 acres, there is no preserve requirement. Therefore, the amendment meets the requirements of this policy.

### **C. Compatibility**

Compatibility is defined as a condition in which land uses can co-exist in relative proximity to each other in a stable fashion over time such that no use is negatively impacted directly or indirectly by the other use. The applicant lists the surrounding uses and future land use designations and provides a compatibility analysis in Exhibit 3.

**Surrounding Land Uses:** Surrounding the subject site are the following:

**North:** To the north of the subject site are parcels with Agricultural Reserve (AGR) future land use designation. Located directly north of the site across Atlantic Avenue an active FLUA amendment Park West Commerce North (LGA 2025-010) the 50.99 acre subject site is located in the Agricultural Reserve Tier. The proposed future land use amendment request is to change the designation from Agricultural Reserve (AGR) to Commerce with underlying AGR (CMR/AGR). The applicant is proposing up to 777,394 square feet (0.35 FAR) of light industrial uses as allowed within the Unified Land Development Code.

**Northwest:** Northwest of the subject site across Starkey Road is a large property (approximately 130 acres) also designated as preserve area for Valencia Cove. This property is currently in row crops. Recently there was a Zoning Application Z-2023-00850 known as One Mile Property, where the application requested rezoning from the Agricultural Reserve Planned Unit Development (AGR-PUD) Zoning District to the Agricultural Reserve (AGR) Zoning District, removing the preserve area on 22.07 acres at the corner of Starkey Road and Atlantic Avenue.

**East:** Directly east of the subject site are single family homes at a density of 0.74 units per acre, known as Delray Lakes Estates, with an Agricultural Reserve (AGR) FLU and a Residential Estate (RE) zoning district. Further east of the site is a Lake Worth Drainage District canal which has an Agricultural Reserve (AGR) FLU designation and is within the Agricultural Reserve (AGR) zoning district. East of the Florida's Turnpike is the Urban/Suburban Tier with future land use designations including commercial and medium and high residential.

**South:** Directly south of the subject site are single family homes at a density of 0.74 units per acre, known as Delray Lakes Estates, with an Agricultural Reserve (AGR) FLU and a Residential Estate (RE) zoning district.

**West:** Directly west of the subject site is a 10 acre nursery with an Agriculture Reserve (AGR) future land use designation.

**FLUE Policy 2.1-f states that** *“the County shall review and make a determination that the proposed future land use is compatible with existing and planned development in the immediate vicinity.”* And **FLUE Policy 2.2.1-b** states that *“Areas designated for Residential use shall be protected from encroachment of incompatible future land uses and regulations shall be maintain to protect residential areas from adverse impacts of adjacent land uses. Non-residential future land uses shall be permitted only when compatible with residential areas, and when the use furthers the Goals, Objectives, and Policies of the Plan.”*

**Applicant's Comments:** The applicant indicates that the proposed amendment is compatible with surrounding uses based on the following:

- “The Property is located on a major east/west transportation route (Atlantic Ave) and within 500 ft. of the intersection entrance to the Florida's Turnpike. Many uses along Atlantic Ave are industrial or commercial in nature. On this basis, the proposed development concept at this location is determined to be compatible.”
- “The proposed use is consistent with the existing development pattern and adjacent uses that have occurred along the Atlantic Avenue corridor.”

**Staff Analysis:** This site is located on the west side of the Florida's Turnpike on the southeast corner of Atlantic Avenue and Persimmon Avenue. To the south and east of the subject site are 96 single family homes, with a density of 0.74 units per acre known as Delray Lakes Estates with an Agricultural Reserve (AGR) future land use designation and with a Residential Estate (RE) zoning district. Further to the east, across the Florida's Turnpike, are urban land uses within the Urban/Suburban Tier including commercial and medium to high residential designations. In addition, there is existing commercial development at the commercial node located at the intersection of Atlantic Avenue and Lyons Road along with additional parcels with CL and Commercial Low Office (CL-O) future land use designations along the corridor.

The request is proposed to allow the property owner to change the Future Land Use from Agricultural Reserve to Commerce with underlying Agricultural Reserve. The applicant indicates the site will be utilized to support future light industrial uses. The CMR FLU and implementing policies establish specific policy requirements dictating the size, location, frontage and access, thereby guiding where these types of industrial and allowable nonresidential uses may be considered. As the site meets the criteria for CMR FLU and is generally consistent with the development pattern of the corridor, staff finds that the subject request is compatible.

#### **E. Consistency with County Overlays, Plans, and Studies**

1. **Overlays – FLUE Policy 2.1-k** states *“Palm Beach County shall utilize a series of overlays to implement more focused policies that address specific issues within unique identified areas as depicted on the Special Planning Areas Map in the Map Series.”*

**Staff Analysis:** The proposed amendment is not located within an overlay

2. **Neighborhood Plans and Studies – FLUE Policy 4.1-c** states *“The County shall consider the objectives and recommendations of all Community and Neighborhood Plans, including Planning Area Special Studies, recognized by the Board of County Commissioners, prior to the extension of utilities or services, approval of a land use amendment, or issuance of a development order for a rezoning, conditional use or Development Review Officer approval.....”*

**Staff Analysis:** The subject site is not located within a Neighborhood Plan recognized by FLUE Policy 4.1-c of the Comprehensive Plan. It's located within the Agricultural Reserve which is the subject of the Agricultural Reserve Master Plan for which policies have been adopted in the Comprehensive Plan in 2001 in order to implement the Master Plan recommendations. Since 2001 there have been numerous amendments to the Agriculture Reserve Tier policies.

#### **F. Public Facilities and Services Impacts**

The proposed amendment will change the future land use designation from Agricultural Reserve to Commerce with an underlying Agricultural Reserve (CMR/AGR). The maximum intensity is based on the proposed change to allow up to 146,209 square feet (0.35 FAR) for light industrial use. Public facilities impacts are detailed in the table in Exhibit 4.

1. **Facilities and Services – FLUE Policy 2.1-a:** *The future land use designations, and corresponding density and intensity assignments, shall not exceed the natural or manmade constraints of an area, considering assessment of soil types, wetlands, flood plains, wellfield zones, aquifer recharge areas, committed residential development, the transportation network, and available facilities and services. Assignments shall not be made that underutilize the existing or planned capacities of urban services.*

**Staff Analysis:** The proposed amendment has been distributed to the County service departments for review and there are adequate public facilities and services available to support the amendment, and the amendment does not exceed natural or manmade constraints. No adverse comments were received from the following departments and agencies regarding impacts on public facilities:



Zoning (ULDC), Mass Transit (Palm Tran), Potable Water & Wastewater (PBC Water Utilities Dept.), Traffic (Engineering), Historic Resources (PBC Archeologist), Parks and Recreation, Health (PBC Dept. of Health), Community Services (Health & Human Services) and the School District.

**2. Long Range Traffic - Policy 3.5-d:** *The County shall not approve a change to the Future Land Use Atlas which:*

- 1) *results in an increase in density or intensity of development generating additional traffic that significantly impacts any roadway segment projected to fail to operate at adopted level of service standard "D" based upon cumulative traffic comprised of the following parts a), b), c) and d):...*

**Staff Analysis:** The Traffic Division reviewed this amendment at a maximum 146,209 square feet of light industrial or 146,209 of flex space or 9.59 acres of landscape service. According to the County's Traffic Engineering Department (see letter dated April 3, 2025 in Exhibit 5), the amendment would result in an increase of 536 net daily trips and 330 (132/198) AM and 159 (64/95) PM net peak hour trips. The Traffic letter concludes *"Based on the review, the Traffic Division has determined that the traffic impacts of the proposed amendment **meet** Policy 3.5-d of the Future Land Use Element of the Palm Beach County Comprehensive Plan at the **maximum potential**..."*

The Traffic Study dated March 31, 2025 was prepared by Simmons & White, Bryan Kelley, P.E. Traffic studies and other additional supplementary materials for site-specific amendments are available to the public on the PBC Planning web page at: <http://discover.pbcgov.org/pzb/planning/Pages/Active-Amendments.aspx>

## **II. Public and Municipal Review**

---

The Comprehensive Plan Intergovernmental Coordination Element **Policy 1.1-c** states that *"Palm Beach County will continue to ensure coordination between the County's Comprehensive Plan and plan amendments and land use decisions with the existing plans of adjacent governments and governmental entities....."*

- A. Intergovernmental Coordination:** Notification of this amendment was sent to the Palm Beach County Intergovernmental Plan Amendment Review Committee (IPARC) for review on March 20, 2025.
- B. Other Notice:** Public notice by letter was mailed to the owners of properties within 500 feet of the site on March 20, 2024. On the same date, several interested parties were also notified by mail including the Alliance of Delray Residential Association, Coalition of Boynton West Residential Associations, Delray Lake Estates Homeowners Association, Waterways at Delray Homeowners Association, Valencia Cove Homeowners Association, Valencia Bay Homeowners Association, Valencia Sound Homeowners Association, Mizner Country Club Master Associations, Four Seasons at Delray Beach HOA, Saturnia Isles Homeowners Association, Stone Creek Ranch HOA, and other amendments related to the Ag Reserve Tier, were provided to the Agricultural Reserve email list of interested parties via email on March 7, 2025.

## Exhibit 3

### Applicant's Justification/Consistency with Comprehensive Plan

#### Introduction

On behalf of the Applicant, JMorton Planning & Landscape Architecture is requesting a Comprehensive Plan Future Land Use Atlas amendment for one parcel located at the southeast corner of Persimmon Ave. and Atlantic Ave. encompassing 9.59 acres of bona fide agriculture (herein referred to as "Property" PCN 00-42-43-27-05-061-0311). A concurrent application is being filed for a rezoning to Multiple Use Planned Development (MUPD) seeking to develop a light industrial use on the Property.

#### **I. PROPOSED FLUA MAP AMENDMENT**

The Applicant is proposing to amend the Future Land Use designation of the Property from Agricultural Reserve (AGR) to Commerce with an underlying Agricultural Reserve (CMR/AGR).

#### Description of Site Vicinity

The Property, and all surrounding properties, have a Future Land Use designation of Agricultural Reserve. Within the vicinity of the Property are multiple agricultural uses including row crops and agriculture sales. The property to the immediate north does not yet have any approvals, but has been concurrently submitted with this application for a future land use amendment to Commerce.

Land uses directly abutting the Property include the following:

Adjacent Property	Land Use Designation	Zoning Designation	Existing Use	Control Number
North	Agricultural Reserve (AGR) & Proposed Commerce	Agricultural Reserve (AGR) & Proposed MUPD	Bona fide Agriculture & Proposed Light Industrial	N/A
South	Agricultural Reserve (AGR)	Residential Estate (RE)	Single Family Residential (Delray Lake Estates)	1979-00031
East	Agricultural Reserve (AGR)	Residential Estate (RE)	Single Family Residential (Delray Lake Estates)	1979-00031
West	Agricultural Reserve (AGR)	Residential Estate (RE)	Single Family Residential (Delray Lake Estates)	1979-00031

#### **G.1 Justification**

Each proposed FLUA amendment must be found to be consistent with the Goals, Objectives, and Policies (GOPs) of the Comprehensive Plan. Future Land Use Element Policy 2.1.f requires that adequate justification for the proposed future land use be provided. Further, the justification statement must demonstrate that a change is warranted and demonstrate the following two factors:

##### **1. The proposed use is suitable and appropriate for the subject site.**

***Response:** The proposed Commerce Future Land Use designation is suitable and appropriate for the Property. The land use allows light industrial uses appropriate along Atlantic Ave. with the many other industrial properties to the west along the corridor and the Property's proximity to the Florida's Turnpike interchange with Atlantic Ave.*

*The Commerce land use designation will provide for additional uses that are compatible with the single-family homes surrounding the Property. The proposed change would allow a light industrial use to provide a needed service to the neighboring agricultural uses, working in harmony with the continued*

*preservation of agriculture for the area. The Property's location along Atlantic Ave. provides for easy access to the site from elsewhere in the County.*

*Under the current land use and zoning designation, the Property could be permitted to have agricultural storage, equestrian arena, potting soil manufacturing, chipping and mulching, composting facility, commercial stable, or commercial nursery which are all incompatible with the adjacent single family residential homes. With the change to the Commerce designation, all uses will require site plan approval to confirm compatibility with surrounding uses, including large landscape buffers to screen all uses from the single family.*

**2. There is a basis for the proposed FLU change for the particular subject site based upon one or more of the following:**

**a. Changes in FLU designations on adjacent properties or properties in the immediate area and associated impacts on the subject site.**

***Response:** The Agricultural Reserve Tier has recently been the subject of numerous changes. The commercial cap has been increased to accommodate new commercial projects along Boynton Beach Boulevard, State Road 7 and Atlantic Avenue. The Board of County Commissioners (BCC) also recognized the changing characteristics of the area and the compatibility concerns for certain agriculture uses with the increasing residential neighborhoods. Many permitted agricultural uses are industrial in nature and it was determined that a light industrial category could be established to complement those uses.*

*In 2022, the BCC adopted a new Land Use Designation of Commerce (CMR) to establish a third category of industrial uses specially for within the Agriculture Reserve Tier, with no other industrial land uses permitted in the Tier. The Commerce category is appropriate for this site to have non-intensive industrial uses that are compatible with adjacent single-family homes and further develops the Atlantic Avenue corridor with neighborhood-serving uses.*

*Commercial-Low (CL) designations have been established at the intersection of Lyons Rd. and Atlantic Ave, approximately 0.25 miles to the west of the Property and Industrial future land use designations on a string of properties beginning approximately one (1) mile west of the Property. This location is more compatible with commercial or industrial land use as it sits approximately 500 feet to the west of the interchange with Atlantic Ave. and Florida's Turnpike.*

*There have been multiple Commerce Future Land Use designations approved by the Board of County Commissioners throughout the Agriculture Reserve Tier since its creation including: LTG Sport Turf (LGA 2023-007), EJKJ Industrial (LGA 2023-004), SR7 Business Plaza (LGA 2023-006), BC Commerce Center (LGA 2023-003) and Bedner Oaks Commerce (LGA-2024-003). All of these changes and the recent direction from the BCC regarding additional light industrial uses in the Agricultural Reserve signify that additional land and opportunities for light industrial projects are needed and appropriate for properties fronting State Road 7, Boynton Beach Blvd. and Atlantic Ave.*

**b. Changes in the access or characteristics of the general area and associated impacts upon the subject site.**

***Response:** Access to the Property is currently on Persimmon Ave and will remain in the existing location. The applicant is proposing to lose acreage to move the connection of Persimmon to Atlantic Ave. further east to align the roadway with Starkey Rd. to the north. This alignment will create the opportunity to provide a traffic signal in the future for the residents of Delray Lake Estates, the subject Property, and all current and future development along Starkey Rd. Atlantic Avenue is scheduled to be widened from 4 lanes to 6 lanes east of the Turnpike. The road will also*

*be widened from 2 lanes to 4 lanes west of Lyons Rd. to better accommodate the future traffic impacts.*

*There are no approvals directly adjacent to the Property that would impact the developability or create an incompatible development pattern. As specified above, the recently approved industrial uses throughout the Agriculture Reserve Tier signify a change in circumstances of the area. All of these changes allow for additional businesses to serve the needs of the growing number of residents moving to the Agricultural Reserve as well as to complement the existing agricultural uses.*

*These changes indicate the Agricultural Reserve has continued to change from a rural agricultural area to a suburban community with a growing population that needs various services and goods within proximity of their homes. A sustainable community is a community that is planned, built and modified to promote a living environment that focuses on urban infrastructure, social equity, efficient provision of utility services and economic sustainability. Sustainable communities incorporate principles that improve access to affordable housing, increase transportation options, and lower transportation costs while protecting the environment. Approval of additional light industrial land will allow for needed services to be located near existing housing, thus reducing vehicle trips outside of the Agricultural Reserve and ultimately contributing to less traffic congestion and better access throughout the Agricultural Reserve.*

**c. New information or change in circumstances which affect the subject site.**

**Response:** *The consultants that prepared the Agricultural Reserve Master Plan recognized the industrial corridor along Atlantic Avenue between State Road 7 and Smith Sundry Road/Half Mile Road. Furthermore, the consultant recommended 330,000 square feet of additional industrial square footage within the Agricultural Reserve. When the Board of County Commissioners reviewed the Agricultural Reserve Master Plan and directed Staff to prepare additional Comprehensive Plan policies for the Agricultural Reserve Tier however, the addition of industrial land and industrial uses was not included. Twenty years have passed since these Agricultural Reserve policies were incorporated into the Comprehensive Plan and the Agricultural Reserve Tier is close to being “built out”. Of the 22,000 acres within the Agricultural Reserve, a small percentage remains without any entitlement for development or preservation.*

*The consultants that developed the Agricultural Reserve Master Plan anticipated that the Agricultural Reserve would be a place where people can live, work and play without having to travel to the Urban/Suburban Tier. Contrary to the intent of the Master Plan, the Agricultural Reserve has become an exclusive community comprised mainly of expensive single-family homes. Most of the employment opportunities available within the Tier are generated by the commercial centers, farming activities, and industrial corridor along Atlantic Avenue. The proposed Future Land Use amendment to Commerce will create another opportunity for a services not currently located within the Tier. This opportunity would ultimately meet the intent of the Master Plan that has yet to be realized by the current limited development pattern.*

*The proposed light industrial uses, submitted with the concurrent rezoning application will create a compatible development with the adjacent to the single family homes of Delray Lakes Estates. Additionally, the development of the Property will realign the connection of Persimmon Ave. to Atlantic Ave. which will facilitate the construction of a traffic signal. This will serve as a safer way for the residents to access their homes. As traffic has increased over the years, crashes are increasingly likely from Starkey and Persimmon and a signal would significantly improve the safety.*

**d. Inappropriateness of the adopted FLU designation.**

**Response:** *N/A*

**e. Whether the adopted FLU designation was assigned in error.**

**Response:** *N/A*

**G.2 Residential Density Increases**

This proposed FLU amendment is not a request to increase residential density. In fact, the change to Commerce will eliminate the ability to have any residential use of the property that could be currently permitted.

**G.3 Compatibility**

Compatible land uses are defined as those which are consistent with each other in that they do not create or foster undesirable health, safety or aesthetic effects arising from direct association of dissimilar activities, including the impacts of intensity of use, traffic, hours of operation, noise vibration, smoke, hazardous odors, radiation, and other land use conditions. The definition of “compatibility” under the repealed Rule 9J-5, FAC, is “a condition in which land uses or conditions can coexist in relative proximity to each other in a stable fashion over time such that no use or condition is unduly negatively impacted, directly or indirectly by another use or condition”. With this definition in mind, the requested change would maintain the subject Property’s compatibility with the surrounding properties, some of which have undergone land use amendments while preventing land area for needed services.

To be compatible, it is not necessary that two uses have the exact same function (e.g. residential, commercial, institutional, etc.). Rather, compatibility is attained when uses do not adversely affect each other. Further, two uses whose functions are different can complement and support each other. For example, a light industrial use can provide essential services to residents of surrounding neighborhoods, agricultural production nearby, as well as the community at-large. In addition, buffering, screening, setback, height, and landscaping requirements can further enhance compatibility, and reduce the potential negative effects of functionally different land uses.

Several factors lead to the conclusion that the proposed FLUA Amendment designation will be compatible with neighboring uses.

- The Property is located on a major east/west transportation route (Atlantic Ave) and within 500 ft of the intersection entrance to the Florida’s Turnpike. Many uses along Atlantic Ave are industrial or commercial in nature. On this basis, the proposed development concept at this location is determined to be compatible.
- The proposed use is consistent with the existing development pattern and adjacent uses that have occurred along the Atlantic Avenue corridor.

As mentioned, many uses that are permitted and currently exist on the agriculture land within the Agricultural Reserve have similar impacts on adjacent properties. Farming activities often include: pesticide and herbicide spraying, heavy equipment storage and operation, produce packing activities, truck deliveries and loading including refrigeration trucks, 24 hour operations, noise, dust, and outdoor storage of materials and dead plants/vegetation. Agriculture activities are often not buffered from adjacent properties and uses. Additionally, the County code requires setbacks, buffers and landscaping for all on-site structures to ensure compatibility. All proposed uses with the concurrent zoning application will be designed with none of the above mentioned external impacts that can occur to the adjacent properties.

**G.4 Comprehensive Plan**

The proposed Future Land Use Atlas Amendment is consistent with various goals, objectives, and policies in the Palm Beach County Comprehensive Plan as detailed below.

**Goals** – The proposed FLUA amendment furthers the County’s goals as described below.

- **Strategic Planning** – “...to recognize the diverse communities within the County, to implement strategies to create and protect quality livable communities respecting the lifestyle choices for

current residents, future generations, and visitors, and to promote the enhancement of areas in need of assistance.”

**Response:** *Approval of this proposed FLU amendment will allow for the development of a light industrial use on a Property with frontage on Atlantic Avenue, a major east/west transportation route. The area surrounding the Property is single family residential. This use will create additional neighborhood serving businesses within the Agricultural Reserve Tier that can meet the needs of the existing and future residents of the area.*

- **Land Planning** – “...to create and maintain livable communities, promote the quality of life, provide for a distribution of land uses of various types, and at a range of densities and intensities, and to balance the physical, social, cultural, and environmental and economic needs of the current and projected residents and visitor populations. This shall be accomplished in a manner that protects and maintains a diversity of lifestyle choices, and provides for the timely, cost-effective provision of public facilities.”

**Response:** *The Property is located within the Agricultural Reserve Tier which is a Limited Urban Service Area (LUSA) where services and public facilities are already available. The Property’s location on a major transportation route with frontage on Atlantic Ave contributes to timely, cost effective service provision. The proposed Commerce designation will allow for development of a use that will better serve the immediate and future needs of the community as it will provide additional services to the area’s residents.*

**Objectives** – The proposed FLUA amendment furthers the County’s objectives as further described below.

- **FLUE Objective 2.2 Future Land Use Provisions - General** – “Palm Beach County shall ensure development is consistent with the County’s diverse character and future land use designations. All public and private activities concerning the use, development and redevelopment of a property, and the provisions of facilities and services shall be consistent with the property’s future land use designation, and the applicable Goals, Objectives and Policies of this Element.”

**Response:** *The Commerce Future Land Use designation establishes a third category allowing industrial uses; and allows an opportunity for light industrial uses in appropriate locations to allow employment-based uses at suitable locations along major thoroughfares while protecting adjacent residences from more intense uses. A change to the Commerce Future Land Use designation would allow for the development of additional uses to support the growing residential communities within the Agricultural Reserve by providing additional services to the residents within the Tier and without further impacting the roadway network leading to the Urban/Suburban Tier.*

- **FLUE Objective 3.1 Service Areas - General** – “Palm Beach County shall establish graduated service areas to distinguish the levels and types of services needed within a Tier, consistent with sustaining the characteristics of the Tier. These characteristics shall be based on the land development pattern of the community and services needed to protect the health, safety and welfare of residents and visitors; and, the need to provide cost effective services based on the existing or future land uses.”

**Response:** *The Property is located within the Agricultural Reserve Tier which is a Limited Urban Service Area (LUSA) with services and public facilities available. The Commerce Land Use designation established a third category for industrial uses, specifically light industrial uses. Development of a light industrial use on the Property would be consistent with the existing development pattern along Atlantic Ave near the interchange with Florida’s Turnpike. A change to the Future Land Use designation would allow for the development of a project that would provide additional services to the surrounding community.*

**Policies** – The proposed FLUA amendment furthers the County’s policies as further described below.

- **FLUE Policy 1.5-v:** “The County shall foster employment opportunities in the Agricultural Reserve Tier by allowing light industrial uses at appropriate locations to provide a balance of land



uses for current and new residents of the Tier. All new future land use amendments requesting industrial type uses in the Agricultural Reserve Tier shall meet the following requirements:

1. Limited to the Commerce (CMR) future land use designation.
2. Located with frontage and access on State Road 7 (north of Rio Grande Avenue), Atlantic Avenue, Boynton Beach Boulevard or have access to these roadways through an existing commercial or industrial site. Sites located west of State Road 7 must share a common border with a property with commercial or industrial future land use;
3. Be accompanied by a concurrent zoning application and conceptual site plan in order to demonstrate that the proposal meets the design, scale, and character requirements of the Tier;
4. Have a minimum of 3 acres and a maximum of 50 acres (with the exception of lands dedicated to rights of way); and
5. Preserve shall be required for Commerce sites utilizing Light Industrial, Multiple Use Planned Development, or Planned Industrial Park Development zoning pursuant to FLUE Policy 1.5.1-q and subject to the following:
  - The preserve area requirements shall be based upon the acreage over 16 acres, shall be a minimum of 40% of the total land area over 16 acres, and allow water management tracts in preserve areas contiguous to the development area that provide enhanced environmental features and improved water quality as demonstrated through the future land use amendment process.

**Response:** *The Project proposes a light industrial development on a 10-acre property located west of and with frontage and access to Atlantic Avenue. The Applicant is requesting a Land Use Designation of Commerce (CMR) corresponding with the concurrent request for a rezone to MUPD; and meeting the Performance Standards and Property Development Regulations. The Property is 10 acres and is not required per the Policy above to provide a preserve area.*

- **FLUE Policy 2.2.4-a:** “The County shall apply Industrial future land use categories at appropriate locations and intensities to satisfy the need for industrial space, provide opportunities for the retention and expansion of industrial and employment based economic activities, and to promote economic development consistent with the County’s economic development directives. The County shall also encourage a broad range of employment opportunities and shall discourage Future Land Use Atlas amendments that result in the loss of industrially designated land.”

**Response:** *The Commerce Land Use designation establishes a third category allowing industrial uses, specifically light industrial uses and provides policy guidance on location requirements, limiting to major corridors. Providing additional industrial land within the Agricultural Reserve ensures the availability of employment opportunities and needed services to the residents of the Agricultural Reserve Tier. By adding valuable industrial land to the Agricultural Reserve Tier, economic diversity is ensured within the Tier and Palm Beach County.*

- **FLUE Policy 2.2.4-c:** “The three Industrial future land use designations are intended to accommodate industrial uses which are defined as uses engaged in the manufacturing, assembly, processing, research and development, wholesale distribution, or storage of products, related uses and services, including Office of an Industrial Nature (as defined by the Introduction and Administration Element).

1. **Commerce.** The Commerce (CMR) future land use designation is intended to accommodate light industrial uses to provide an option for low-trip generating non-residential and/or employment generating uses on arterial roadways. Industrial uses allowed shall be limited to those that demonstrate Light Industrial characteristics.

**Response:** *Development of a light industrial use on the Property would be consistent with the existing development pattern along State Road 7. A change to the Future Land Use designation would allow for the development of a project that would provide an employment opportunity and additional services to the surrounding community.*

- **FLUE Policy 2.2.4-d:** “Industrial uses shall be considered either Light or Heavy as defined below. **Light Industrial.** Light industrial development’s typical operation is not likely to cause undesirable effects, danger or disturbance upon nearby areas and typically does not create negative impacts on immediately adjoining uses. These uses typically do not cause or result in the dissemination of dust, smoke, fumes, odor, noise, vibration, light, or other potentially objectionable effects beyond the boundaries of the lot on which the use is conducted..”

**Response:** *As previously indicated, agriculture uses often generate dust, smoke, fumes, odor, noise, vibration and other objectionable effects such as aerial spraying of pesticides, etc. on adjacent properties. The proposed Future Land Use amendment to Commerce would ensure the development of a light industrial use that is located away from residential development and would not have such similar negative impacts on adjacent properties.*

### **G.5 Florida Statutes**

Data and analysis demonstrating that the proposed development can be supplied by necessary services without violating adopted LOS standards are presented in Attachment H (Traffic Letter and Study), J (Drainage Statement), K (Fire Rescue Letter), and I (Water and Wastewater Provider Letter). Data and analysis discussing environmental and historical resources impacts are presented in Attachments J (Drainage Statement), M (Wellfield Zone), L (Natural Features Inventory and Map) and N (Historic Resource Evaluation Letter). No negative environmental impacts are identified.

The primary indicators that a plan or plan amendment does not discourage the proliferation of urban sprawl are listed below along with the applicant’s descriptions. The evaluation of the presence of these indicators shall consist of an analysis of the plan or plan amendment within the context of features and characteristics unique to each locality in order to determine whether the plan or plan amendment discourages urban sprawl.

- Promotes, allows, or designates for development substantial areas of the jurisdiction to develop as low-intensity, low-density, or single use development or uses.

**Response:** *The applicant is requesting to change the FLU of the property from AGR to CMR with an underlying future land use of AGR for the purpose of providing additional services along the Atlantic Ave corridor. The amendment does not promote low intensity/density or single-use development.*

- Promotes, allows, or designates significant amounts of urban development to occur in rural areas at substantial distances from existing urban areas while not using undeveloped lands that are available and suitable for development.

**Response:** *The Property is located within the Atlantic Ave. corridor which is not rural in nature as evidenced by urban services such as police, fire rescue and water/wastewater/drainage utilities are existing in the immediate area. The proposed Commerce designation is consistent near the interchange with the Florida’s Turnpike.*

- Promotes, allows, or designates urban development in radial, strip, isolated, or ribbon patterns generally emanating from existing urban developments.

**Response:** *The Property is not isolated in nature and currently supports a nursery.. The Property is surrounded by various commercial, residential and agricultural uses that would be considered infill development along a major west/west transportation corridor.*

- Fails to adequately protect and conserve natural resources, such as wetlands, floodplains, native vegetation, environmentally sensitive areas, natural groundwater aquifer recharge areas, lakes, rivers, shorelines, beaches, bays, estuarine systems, and other significant natural systems.

**Response:** *This amendment does not fail to protect and conserve natural resources as the proposed development will have no negative impact on any other significant natural system. The Property does not support any environmentally sensitive areas as it is currently utilized for agricultural production. No listed species were located on the property and it is located outside of any wellfield protection zone. As required by the ULDC, any native plant material will be addressed during the zoning approval process.*

- Fails to adequately protect adjacent agricultural areas and activities, including silviculture, active agricultural and silvicultural activities, passive agricultural activities, and dormant, unique, and prime farmlands and soils.

**Response:** *The Property is currently utilized for a small nursery business. Several changes have already been granted to properties within the immediate area that allow the development of commercial and industrial uses. The area has been changing from agriculture to commercial and industrial uses since 2006. Since the proposed request is for Commerce, no negative impacts to agricultural uses are anticipated with the land use change. The small size of the Property will not impact the larger parcels supporting agriculture operations in the Tier.*

- Fails to maximize use of existing public facilities and services.

**Response:** *This amendment will maximize the use of existing facilities and services. The Property's location within a Limited Urban Service Area (LUSA) means that services and public facilities are available to serve the Property.*

- Fails to maximize use of future public facilities and services.

**Response:** *Reports and letters are provided with this application to show the availability of roadway capacity, water/sewer service, drainage outfall and fire response. This amendment will maximize the use of any future facilities proposed or constructed in the future and provide additional tax base. Therefore, the proposal will maximize the existing public services in the area.*

- Allows for land use patterns or timing which disproportionately increase the cost in time, money, and energy of providing and maintaining facilities and services, including roads, potable water, sanitary sewer, stormwater management, law enforcement, education, health care, fire and emergency response, and general government.

**Response:** *Public services and facilities are already available in the immediate vicinity. The proposed amendment will provide for infill development and fit in with the existing land use pattern.*

- Fails to provide a clear separation between rural and urban uses.

**Response:** *Approval of a Commerce Future Land Use designation will be consistent with the type of development to the north. While the property is located within the Agricultural Reserve Tier of the County, this major roadway corridor has been changing as new commercial and industrial uses are approved and developed further to the west. The surrounding residential developments are supporting and increasing the demand for these uses. Therefore, the proposal discourages the proliferation of Urban/Sprawl.*

- Discourages or inhibits infill development or the redevelopment of existing neighborhoods and communities.

**Response:** *This amendment will allow for the development of a small Property that is consistent with the existing and proposed uses along Atlantic Ave. Future development on the Property will serve the current and future needs for the surrounding communities.*

- Fails to encourage a functional mix of uses.

**Response:** *Approval of this proposed amendment will allow the development of industrial uses that will provide services to the surrounding existing residential communities rather than allowing the current single use development pattern that has occurred in the Agricultural Reserve to continue. Development of the Property will allow the community needs to be met within the Tier which will cause trips to remain in the Agricultural Reserve Tier.*

- Results in poor accessibility among linked or related land uses.

**Response:** *There are no directly adjacent industrial or commercial uses that could be connected.*

- Results in the loss of significant amounts of functional open space.

**Response:** *This amendment does not result in a loss of any functional open space as the subject property is currently not utilized as functional open space.*

**Florida Statutes, Section 163.3177.(6).(a).9.b:** Of those criteria listed in this section the subject property will meet the following criteria which shows that it will discourage the proliferation of urban sprawl:

- Directs or locates economic growth and associated land development to geographic areas of the community in a manner that does not have an adverse impact on and protects natural resources and ecosystems.

**Response:** *This amendment does not fail to protect and conserve natural resources as the property does not contain natural resources. The site is located outside of any wellfield protection zone. As required by the ULDC, any native plant material will be addressed during the zoning approval process.*

- Promotes the efficient and cost-effective provision or extension of public infrastructure and services.

**Response:** *The proposed Future Land Use amendment will maximize the use of public facilities and services. Public infrastructure already exists within this relatively urban area. No facilities would be required to be installed in rural or sparsely populated areas, thereby maximizing the use of the existing facilities. Therefore, the proposal discourages the proliferation of Urban Sprawl.*

- Promotes walkable and connected communities and provides for compact development and a mix of uses at densities and intensities that will support a range of housing choices and a multimodal transportation system, including pedestrian, bicycle, and transit, if available.

**Response:** *The development will be designed with pedestrian connections to Atlantic Ave. as required through the site plan approval process.*

- Creates a balance of land uses based upon demands of the residential population for the nonresidential needs of an area.

**Response:** *Approval of this proposed amendment will allow the development of an industrial use that will allow for the additional employment opportunities within an area of the County that has historically only been developed with low density single family residential development. In order to meet the growing demand, additional industrial land is needed in this area. Therefore, the proposed amendment would contribute to livable communities and help balance the land uses within the Agricultural Reserve while maintaining the character of the community.*

## **Conclusion**

As described above, the proposed FLU amendment from Agricultural Reserve (AGR) to Commerce (CMR) is consistent with the Goals, Objectives, and Policies of Palm Beach County's Comprehensive Plan and the Florida State Statutes. The proposed amendment is also compatible with the surrounding area, does not contribute to urban sprawl and is consistent with the Comprehensive Plan and will not negatively impact service provision. The CMR designation will be able to complement the existing residential and commercial uses along Atlantic Ave. and nearby agriculture by providing additional light industrial uses not currently provided nearby.

## **II. ULDC CHANGES**

No ULDC changes are needed in response to this proposed comprehensive plan future land use atlas amendment.

## Exhibit 4

### Applicant's Public Facilities Table

<b>A. Traffic Information</b>	
See Exhibit 5	
<b>B. Mass Transit Information</b>	
<b>Nearest Palm Tran Route (s)</b>	Route 81 – DLB Crosstown via Atlantic Avenue.
<b>Nearest Palm Tran Stop</b>	Stop No. 6409 (0.9 miles east) – Oriole Plaza, east side of Hagen Ranch Road approximately 0.052 miles north of Atlantic Avenue
<b>Nearest Tri Rail Connection</b>	Via Route 81 – Delray Beach Tri-Rail Station, approximately 6.5 miles east
<b>C. Portable Water &amp; Wastewater Information</b>	
<b>Potable Water &amp; Wastewater Providers</b>	Palm Beach County Water Utilities Department Service capacity is available for the proposed development. See Attachment I for letter from Palm Beach County Water Utilities Department.
<b>Nearest Water &amp; Wastewater Facility, type/size</b>	The nearest point of connection is a 42" potable water main, a 16" sanitary sewer force main and a 20" reclaimed water main located within Atlantic Avenue adjacent to the properties. See Attachment I for letter from Palm Beach County Water Utilities Department.
<b>D. Drainage Information</b>	
The site is located within the boundaries of the Lake Worth Drainage District and South Florida Water Management District C-15 Drainage Basin. Legal positive outfall is available via discharge to the Lake Worth Drainage District L-34 Canal along the north side of the subject parcel. See Attachment J for Drainage Statement.	
<b>E. Fire Rescue</b>	
<b>Nearest Station</b>	Palm Beach County Fire-Rescue Station # 42, located at 14276 Hagen Ranch Road.
<b>Distance to Site</b>	2.25 miles
<b>Response Time</b>	Average response time 7:29
<b>Effect on Resp. Time</b>	The proposed amendment will have some impact on the response time for Station # 42.
<b>F. Environmental</b>	

<b>Significant habitats or species</b>	There are no significant habitats or species on the Property. The property is currently used as a nursery.
<b>Flood Zone*</b>	The Property is located in Zone X, which is not a flood zone.
<b>Wellfield Zone*</b>	The Property is not located within a Wellfield Protection Zone.
<b>G. Historic Resources</b>	
There are no significant historic resources present on the Property.	

## Exhibit 5

### Traffic Division Letter



**Engineering and  
Public Works Department**  
P.O. Box 21229  
West Palm Beach, FL 33416-1229  
(561) 684-4000  
FAX: (561) 684-4050  
www.pbc.gov

**Palm Beach County  
Board of County  
Commissioners**

Maria G. Marino, Mayor

Sara Baxter, Vice Mayor

Gregg K. Weiss

Joel Flores

Marci Woodward

Maria Sachs

Bobby Powell, Jr.

**County Administrator**

Verdenia C. Baker

*"An Equal Opportunity  
Affirmative Action Employer"*



April 3, 2025

Bryan Kelley, P.E.  
2581 Metrocentre Boulevard West, Suite 3  
West Palm Beach, Florida 33407

**RE: Park West Commerce South - Revised  
FLUA Amendment Policy 3.5-d Review  
Round 2024-25-B**

Dear Mr. Kelley:

Palm Beach County Traffic Division has reviewed the Land Use Plan Amendment Application Traffic Statement for the proposed Future Land Use Amendment for the above-referenced project, revised on March 31, 2025, pursuant to Policy 3.5-d of the Land Use Element of the Palm Beach County Comprehensive Plan. The project is summarized as follows:

<b>Location:</b>	SE corner of Atlantic Avenue and Persimmon Avenue	
<b>PCN:</b>	00-42-46-20-01-000-0070	
<b>Acres:</b>	9.59 acres	
	<b>Current FLU</b>	<b>Proposed FLU</b>
<b>FLU:</b>	Agriculture Reserve (AGR)	Commerce (CMR)/Agricultural Reserve (AGR)
<b>Zoning:</b>	Agricultural Residential (AR)	Multiple Use Planned Development (MUPD) or Light Industrial (IL)
<b>Density/ Intensity:</b>	0.15 FAR	0.35 FAR
<b>Maximum Potential:</b>	Nursery (Garden Center) = 5 acres Nursery (Wholesale) = 4.59 acres	Light Industrial = 146,209 SF OR Flex Space – IND FLU = 146,209 SF OR Landscape Services = 9.59 acres
<b>Proposed Potential:</b>	None	Light Industrial = 146,209 SF OR Flex Space – IND FLU = 146,209 SF OR Landscape Services = 5 acres
<b>Net Daily Trips:</b>	536 (maximum – current) 403 (proposed – current)	
<b>Net PH Trips:</b>	330 (132/198) AM, 159 (64/95) PM (maximum) 202 (129/73) AM, 159 (64/95) PM (proposed)	





Bryan Kelley, P.E.  
April 3, 2025  
Page 2

*\* **Maximum** indicates typical FAR and maximum trip generator. **Proposed** indicates the specific uses and intensities/densities anticipated in the zoning application.*

Based on the review, the Traffic Division has determined that the traffic impacts of the proposed amendment **meet** Policy 3.5-d of the Future Land Use Element of the Palm Beach County Comprehensive Plan at the **maximum potential** density shown above.

Please do not hesitate to reach out with any questions or concerns at 561-684-4030 or DSimeus@pbc.gov.

Sincerely,

A handwritten signature in blue ink, appearing to be "DS", is written over a horizontal line.

Dominique Simeus, P.E.  
Professional Engineer  
Traffic Division

DS:ep

cc:

Quazi Bari, P.E., PTOE – Manager – Growth Management, Traffic Division  
Bryan Davis – Principal Planner, Planning Division  
Stephanie Gregory – Principal Planner, Planning Division  
Khurshid Mohyuddin – Principal Planner, Planning Division  
Kathleen Chang – Senior Planner, Planning Division  
David Wiloch – Senior Planner, Planning Division  
Alberto Lopez Tagle - Technical Assistant III, Traffic Division

File: General - TPS -- Unincorporated - Traffic Study Review  
N:\TRAFFIC\Development Review\Comp Plan\25-B\Park West Commerce South - Revised.docx

## Exhibit 6

### Water & Wastewater Provider LOS Letter

---



**Water Utilities Department  
Engineering**

8100 Forest Hill Blvd.  
West Palm Beach, FL 33413  
(561) 493-6000  
Fax: (561) 493-6085  
www.pbcwater.com



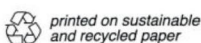
**Palm Beach County  
Board of County  
Commissioners**

Maria Sachs, Mayor  
Maria G. Marino, Vice Mayor  
Gregg K. Weiss  
Michael A. Barnett  
Marci Woodward  
Sara Baxter  
Mack Bernard

**County Administrator**

Verdenia C. Baker

*"An Equal Opportunity  
Affirmative Action Employer"*



August 23, 2024

Morton  
3910 RCA Boulevard  
Palm Beach Gardens, FL 33410

RE: Park West (South)

PCN 00-42-46-20-01-000-0070  
Service Availability Letter

Dear Ms. Velasco,

This is to confirm that the referenced property is located within Palm Beach County Utility Department (PBCWUD) utility service area. Based on a review of current PBCWUD infrastructure and existing customers within the general vicinity of the referenced property, PBCWUD currently has the capacity to provide the level of service required for the land use amendment from Agricultural Reserve (AGR) to Commerce (CMR) on approximately 10.2 acres.

The nearest point of connection is a 42" potable water main, a 16" sanitary sewer force main and a 20" reclaimed water main located within Atlantic Avenue adjacent to the subject properties.

Please note that this letter does not constitute a final commitment for service until the final design has been approved by PBCWUD. In addition, the addition of new developments/customers prior to service initiation to the property may affect the available capacity. PBCWUD does not make any representations as to the availability of capacity as of the future service initiation date.

If you have any questions, please give me a call at (561)493-6116.

Sincerely,

A handwritten signature in blue ink, appearing to read "Jackie Michels".

Jackie Michels, P.E.  
Project Manager

## Exhibit 7

### Disclosure of Ownership Interests

---

PALM BEACH COUNTY - ZONING DIVISION

FORM # 9

#### DISCLOSURE OF OWNERSHIP INTERESTS – PROPERTY

*[TO BE COMPLETED AND EXECUTED BY THE PROPERTY OWNER(S) FOR EACH APPLICATION FOR  
COMPREHENSIVE PLAN AMENDMENT OR DEVELOPMENT ORDER]*

TO: PALM BEACH COUNTY PLANNING, ZONING AND BUILDING EXECUTIVE  
DIRECTOR, OR HIS OR HER OFFICIALLY DESIGNATED REPRESENTATIVE

STATE OF FLORIDA  
COUNTY OF PALM BEACH

BEFORE ME, the undersigned authority, this day personally appeared  
Paul Okean, hereinafter referred to as "Affiant," who  
being by me first duly sworn, under oath, deposes and states as follows:

1. Affiant is the ☐ individual or ☒ President *[position -*  
*e.g., president, partner, trustee]* of Morningstar Nursery, Inc. *[name*  
*and type of entity - e.g., ABC Corporation, XYZ Limited Partnership]* that holds an  
ownership interest in real property legally described on the attached Exhibit "A" (the  
"Property"). The Property is the subject of an application for Comprehensive Plan  
amendment or Development Order approval with Palm Beach County.
2. Affiant's address is: 505 South Flagler  
Suite 1100  
West Palm Beach, FL 33401
3. Attached hereto as Exhibit "B" is a complete listing of the names and addresses of  
every person or entity having a five percent or greater interest in the Property.  
Disclosure does not apply to an individual's or entity's interest in any entity registered  
with the Federal Securities Exchange Commission or registered pursuant to  
Chapter 517, Florida Statutes, whose interest is for sale to the general public.
4. Affiant acknowledges that this Affidavit is given to comply with Palm Beach County  
policy, and will be relied upon by Palm Beach County in its review of application for  
Comprehensive Plan amendment or Development Order approval affecting the  
Property. Affiant further acknowledges that he or she is authorized to execute this  
Disclosure of Ownership Interests on behalf of any and all individuals or entities holding  
a five percent or greater interest in the Property.
5. Affiant further acknowledges that he or she shall by affidavit amend this disclosure to  
reflect any changes to ownership interests in the Property that may occur before the  
date of final public hearing on the application for Comprehensive Plan amendment or  
Development Order approval.
6. Affiant further states that Affiant is familiar with the nature of an oath and with the  
penalties provided by the laws of the State of Florida for falsely swearing to statements  
under oath.

7. Under penalty of perjury, Affiant declares that Affiant has examined this Affidavit and to the best of Affiant's knowledge and belief, it is true, correct, and complete.

FURTHER AFFIANT SAYETH NAUGHT.

  
Karen Fina, Affiant  
(Print Affiant Name)

NOTARY PUBLIC INFORMATION:

STATE OF FLORIDA  
COUNTY OF PALM BEACH

The foregoing instrument was acknowledged before me by means of ☒ physical presence or [ ] online notarization, this 16<sup>th</sup> day of December, 2023 by Karen Fina (name of person acknowledging). He/she is personally known to me or has produced \_\_\_\_\_ (type of identification) as identification and did/did not take an oath (circle correct response).

Lauren McClellan  
(Name - type, stamp or print clearly)

  
(Signature)

My Commission Expires on: 2/28/25

NOTARY'S SEAL OR STAMP



LAUREN L. MCCLELLAN  
Commission # HH 057806  
Expires February 28, 2025  
Bonded Thru Budget Notary Services

**EXHIBIT "A"**

**PROPERTY**

A PARCEL OF LAND LYING IN SECTION 13, TOWNSHIP 46 SOUTH, RANGE 41 EAST, PALM BEACH COUNTY, FLORIDA, BEING MORE PARTICULARLY DESCRIBED AS FOLLOWS:

FROM THE SOUTHWEST CORNER OF SAID SECTION 13, RUN THENCE N89°08'33"E ALONG THE SOUTH LINE OF SAID SECTION 13 A DISTANCE OF 992.68 FEET; THENCE N00°51'27"W A DISTANCE OF 100.00 FEET TO THE POINT OF BEGINNING; RUN THENCE N45°36'59"W A DISTANCE OF 35.50 FEET; THENCE N00°22'29"W A DISTANCE OF 282.33 FEET; THENCE N89°37'30"E, A DISTANCE OF 1461.99 FEET; THENCE S00°22'30"E A DISTANCE OF 295.23 FEET; THENCE ALONG THE NORTHERLY RIGHT-OF-WAY LINE OF DELRAY WEST ROAD S89°08'33"W A DISTANCE OF 1436.83 FEET TO THE POINT OF BEGINNING.

PARCEL CONTAINS: 440,316.60 SQUARE FEET OR 10.108 ACRES, MORE OR LESS.

**EXHIBIT "B"****DISCLOSURE OF OWNERSHIP INTERESTS - PROPERTY**

Affiant must identify all entities and individuals owning five percent or more ownership interest in the Property. Affiant must identify individual owners. For example, if Affiant is an officer of a corporation or partnership that is wholly or partially owned by another entity, such as a corporation, Affiant must identify the other entity, its address, and the individual owners of the other entity. Disclosure does not apply to an individual's or entity's interest in any entity registered with the Federal Securities Exchange Commission or registered pursuant to Chapter 517, Florida Statutes, whose interest is for sale to the general public.

<b>Name</b>	<b>Address</b>
Paul Z. Okean	505 South Flagler, Suite 1100, West Palm Beach, FL 33401
Blane M. Okean	505 South Flagler, Suite 1100, West Palm Beach, FL 33401
Alexandra P. Okean	505 South Flagler, Suite 1100, West Palm Beach, FL 33401

## Exhibit 8 Urban Sprawl Analysis

Primary Indicators that an amendment does not discourage urban sprawl	Staff Assessment	Sprawl Indicated?
<b>Criteria Related to Land Use Patterns</b>		
Promotes, allows or designates for development substantial areas of the jurisdiction to develop as low-intensity, low-density, or single-use development or uses.	This amendment does not promote, allow or designate a substantial area of the County to develop as low-intensity, low-density, or single-use development or uses.	No
Promotes, allows or designates urban development in radial, strip, isolated or ribbon patterns generally emanating from existing urban developments.	This amendment does not designate urban development emanating from existing urban development. The site is within a Limited Urban Service area where urban services are provided.	No
Discourages or inhibits infill development or the redevelopment of existing neighborhoods and communities.	This amendment does not discourage or inhibit infill development or the redevelopment of existing neighborhoods and communities.	No
Fails to encourage functional mix of uses.	This amendment will introduce additional light industrial uses in an area with primarily Agricultural Reserve FLUs.	No
Results in poor accessibility among linked or related land uses.	The proposed amendment would not result in poor accessibility among related land uses.	No
Results in the loss of significant amounts of functional open space.	The proposed amendment on this site will not result in the loss of significant amounts of functional open space. The site is currently a nursery.	No
<b>Criteria related to sites located outside or at the edge of the Urban Service Area</b>		
Promotes, allows, or designates significant amounts of urban development to occur in rural areas at substantial distances from existing urban areas while not using undeveloped lands that are available and suitable for development	The site is located within in the Agricultural Reserve, a Limited Urban Service Area (LUSA) which allows for a mix of urban and rural levels of service, and therefore, does not promote, allow, or designate a significant amount of urban development to occur in rural areas at substantial distances from existing urban areas.	No
Fails to adequately protect and conserve natural resources, such as wetlands, floodplains, native vegetation, environmentally sensitive areas, natural groundwater aquifer recharge areas, lakes, rivers, shorelines, beaches, bays, estuarine systems, and other significant natural systems	The property does not contain any environmentally sensitive areas. The site is not within a Wellfield Protection Area.	No
Fails to adequately protect adjacent agricultural areas and activities, including silviculture, and including active agricultural and silvicultural activities as well as passive agricultural activities and dormant, unique and prime farmlands and soils.	The proposed amendment may result in compatibility concerns with adjacent agriculture. However with adequate buffering through the zoning process, significant adverse impact could be addressed. Therefore the proposed amendment does not fail to adequately protect adjacent agricultural areas.	No

Primary Indicators that an amendment does not discourage urban sprawl	Staff Assessment	Sprawl Indicated?
Fails to provide a clear separation between rural and urban uses.	The AGR Tier is intended to support and preserve agricultural while allowing low density development and limited commercial development. Institutional uses are restricted from locating west of State Road 7. The Agricultural Preserve provisions therefore allow for a mix of uses to support the allowed residential, commercial, and other non-residential development.	No
<b>Criteria Related to Public Facilities</b>		
Fails to maximize use of existing public facilities and services.	Public facilities and services will be provided and water and wastewater lines are currently available along Atlantic Avenue adjacent to the subject site.	No
Fails to maximize use of future public facilities and services.	The AGR LUSA allows for a mix of urban and rural levels of service. The subject site would maximize the use of future public facilities available in the area and are going to connect to water and sewer service.	No
Allows for land use patterns or timing which disproportionately increase the cost in time, money and energy, of providing and maintaining facilities and services, including roads, potable water, sanitary sewer, stormwater management, law enforcement, education, health care, fire and emergency response, and general government.	The site is within the AGR LUSA, allows for urban levels of service to serve development. There are no adverse impacts to public facilities and services as indicated by service providers through department review.	No
<b>Overall Assessment:</b> As demonstrated above, the proposed amendment does not meet any of the indicators of urban sprawl, and would not contribute to urban sprawl in the county.		



## **Exhibit 9**

### **Industrial and Commerce Amendment History**

---

Since the adoption of the Master Plan implementing policies in 2001 and the Commerce future land use in 2022, the County has processed several privately proposed future land use amendments for industrial type future land use designations, including the subject request, as summarized below:

#### **Requests for Industrial or Economic Development Center Future Land Use**

- **Homrich Commercial (LGA 2016-019).** In 2016, the BCC adopted an amendment to the Future Land Use Atlas on a 13.44 acre site with Agricultural Reserve (AGR) future land use to Commercial Low with an underlying Industrial (CL/IND). The site is located north of Boynton Beach Boulevard, west of State Road 7 (US HWY. 441). A voluntary condition of approval limited development of the site to a maximum of 29,400 square feet of commercial and 197,100 square feet of light industrial uses. Staff recommendation for denial was based in part on a lack of a comprehensive analysis and policy direction considering appropriate locations, uses, extent, and intensity established for new industrial uses in the Tier. At the January 15, 2016 public hearing, the Planning Commission recommended approval of the FLUA in a 7 to 5 vote.
- **West Atlantic Industrial (LGA 2017-017).** In 2017, the BCC denied an amendment to the Future Land Use Atlas on a 2.51 acres parcel from AGR future land use to IND/AGR. The site is located on the south side of Atlantic Avenue, approximately 1,100 feet west of Lyons Road in order to develop up to 47,000 square feet of industrial use. Staff recommended denial due to lack of policy direction for new industrial requests in the Tier and since the establishment of industrial uses mid-block on a small, isolated parcel would not be compatible with surrounding agricultural uses. At the June 16, 2017 public hearing, the Planning Commission recommended denial in a 10 to 1 vote. The amendment was denied by the BCC at the July 26, 2017 Transmittal Hearing.
- **Boynton Technology Park Text (2020).** This privately proposed text amendment for initiation was requesting to allow the Economic Development Center (EDC) future land use in the Tier as a multiple use commercial, industrial and residential Planned Industrial Park Development (PIPD), increase the commercial cap and to allow for 3 units per acre with no preserve requirement and including a workforce housing requirement. The 140 acre site is located on the north and south sides of Boynton Beach Boulevard, adjacent to the Florida's Turnpike. Which also proposed a FLU Amendment to change the Ag Reserve (AGR) future land use designation to Economic Development Center with an underlying 3 units per acre (EDC/3). The 140 acre site is located on the north and south sides of Boynton Beach Boulevard, west of the Florida Turnpike. The site is proposed to include 185,000 square feet of commercial, a 140 room hotel commercial, industrial, and residential pods with the 420 units clustered. At the June 12, 2020 public hearing, the Planning Commission recommended denial of initiation in an 11 to 2 vote. The text initiation was withdrawn by the applicant prior to the June 29, 2020 BCC Transmittal Hearing.
- **Boynton Parc Plaza Text (2021):** This privately proposed text amendment for initiation was requesting to allow the Multiple Land Use future land use designation with Industrial and High Residential, 8 units per acre (MLU, IND/8) in the Tier; provide exemption from preserve requirements; add policy language for a Workplace, Employment & Economic

Development in the Tier; and, add a requirement for workforce housing. The associated FLUA requested to change the future land use from Agricultural Reserve (AGR) to Multiple Land Use with underlying Industrial and High Residential, 8 units per acre (MLU, IND/8). The 47.21-acre site is located on the north side of Boynton Beach Boulevard, west of Florida's Turnpike. At the April 9, 2021 public hearing, the Planning Commission recommended denial of initiation in a 13 to 0 vote. The application was withdrawn by the applicant prior to the May 5, 2021 BCC Transmittal Hearing.

- **Star Key Industrial (LGA 2021-015).** This privately proposed future land use amendment was withdrawn by the applicant on September 30, 2021 prior to scheduling of a Planning Commission hearing. The applicant proposed to change the future land use designation for 50.99 acres of land to change from the AGR future land use designation to IND/AGR in order to develop industrial uses, with a maximum potential of 999,506 square feet (.45 FAR). The site is located on the north side of Atlantic Avenue, between Starkey Road and the Florida's Turnpike.
- **Sunflower Light Industrial (LGA 2021-016).** The application proposed a future land use amendment for 8.19 acres of land from the AGR future land use designation to IND/AGR in order to develop industrial uses, with a maximum potential of 0.45 floor area ratio (160,540 square feet). The site is located on the west side of State Road 7, approximately a quarter mile south of Atlantic Avenue. At the April 23, 2021 public hearing, the Planning Commission recommended denial in a 6 to 6 vote. The Board adopted the amendment on July 28, 2021 with conditions of approval limiting the site to:
  - Uses shall exclude heavy industrial uses which engage in the basic processing, manufacturing, or storage of flammable, hazardous, or explosive materials or products, or processes which potentially involve hazardous or commonly recognized offensive conditions as described in Future Land Use Element Policy 2.2.4-d of the Palm Beach County Comprehensive Plan; and
  - Uses identified as Commercial in Article 4 of the Unified Land Development Code are prohibited on the site, with the exception of Landscape Service, Self-Service Storage, and accessory uses.
- **Las Farms (LGA 2022-001).** On February 2, 2022, the BCC adopted a future land use amendment request for 6.95 acres of land from the AGR future land use designation to IND/AGR in order to develop industrial uses, with a maximum potential of 136,234 square feet (0.45 FAR). The site is located on the west side of State Road 7, approximately one half mile north of Boynton Beach Boulevard. The amendment was adopted with the same conditions of approval as the Sunflower Light Industrial amendment. At the October 1, 2021 public hearing, the Planning Commission recommended approval in a 9 to 4 vote. At the November 3, 2021 BCC Transmittal public meeting, the board transmitted the amendment. At the February 2, 2023 BCC public hearing, the Board adopted the amendment in a 7 to 0 vote.
- **West Atlantic Industrial Fina (LGA 2022-018).** The application proposed a future land use amendment for 10.11 acres of land from the AGR future land use designation to IND/AGR in order to develop industrial uses, with a maximum potential of 198,176 square feet (0.45 FAR). The site is located on the north side of Atlantic Avenue, approximately one half mile west of State Road 7. The amendment proposed the same conditions of approval as the Sunflower Light Industrial and Las Farms amendments. At the April 8, 2022 public hearing, the Planning Commission recommended denial in an 8 to 1 vote. On May 4, 2022, the BCC denied transmittal of the amendment.

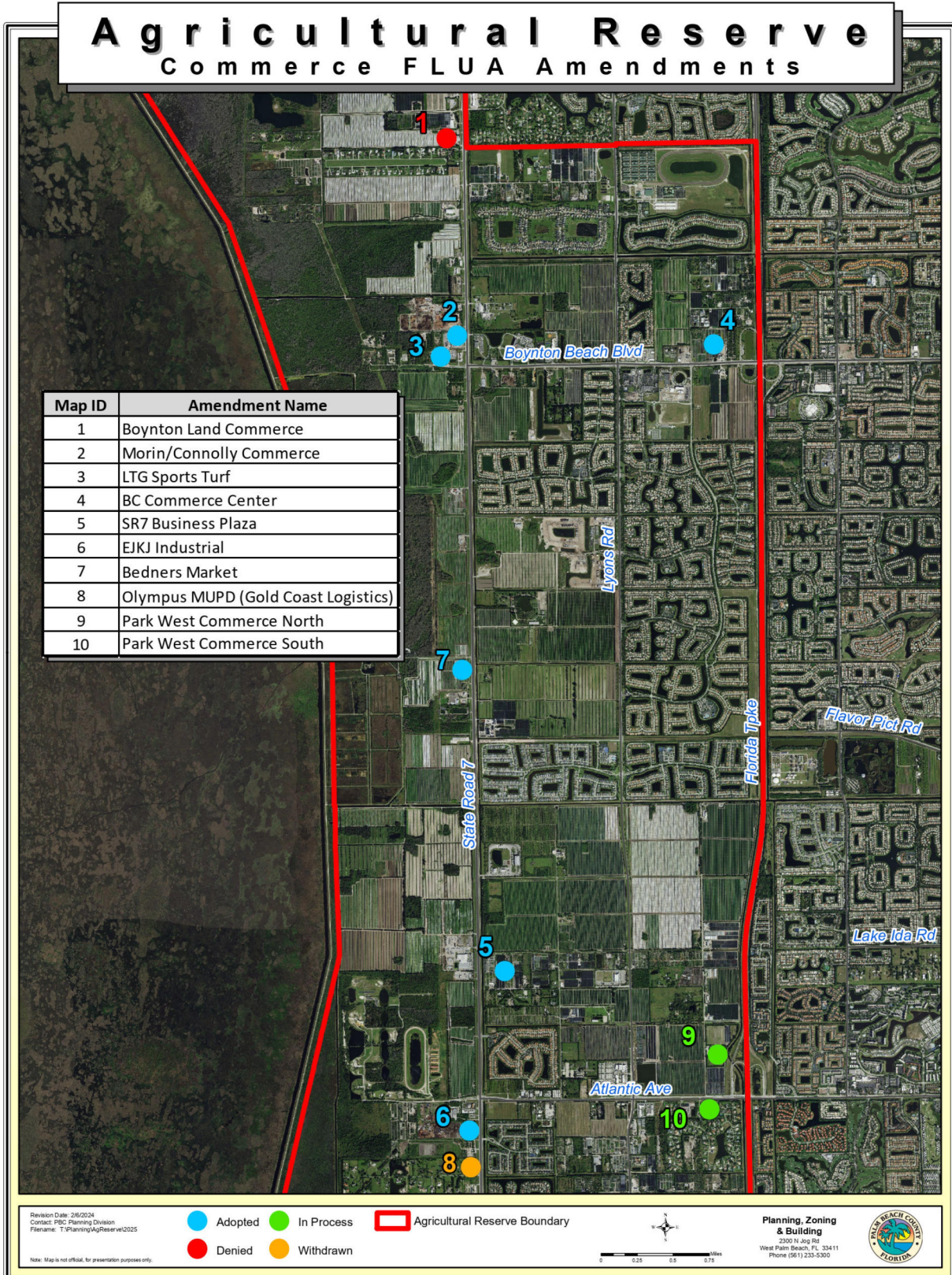
### **Requests for Commerce Future Land Use (see Exhibit 10 for map)**

- **Boynton Land Commerce (LGA 2023-001).** The application proposed a future land use amendment on 15 acres of land from AGR to CMR/AGR in order to develop light industrial uses, with a maximum potential of 294,030 square feet (0.45 floor area ratio). The site is located on the west side of State Road 7, approximately 1.25 miles south of Hypoluxo Road. The Planning Commission recommended denial in a 10 to 0 vote at the October 14, 2022 Planning Commission Hearing. At the November 28, 2022 BCC Transmittal public hearing, the Board denied transmittal of the amendment in a 4 to 3 vote.
- **Morin/Connolly Commerce (LGA 2023-002).** The application proposed a future land use amendment on 3.41 acres of land from AGR to CMR/AGR in order to develop light industrial uses, with a maximum potential of 66,843 square feet (.45 floor area ratio). The site is located on the west side of State Road 7, approximately 0.20 miles north of Boynton Beach Boulevard. The Planning Commission recommended approval with modifications (limiting site to 30,000 square feet) with a vote of 9 to 0 at the October 14, 2022 public hearing. At the November 28, 2022 BCC Transmittal public hearing, the Board transmitted the amendment in a 7 to 0 vote. At the March 23, 2023 BCC zoning public hearing, the Board adopted the amendment in a 6 to 1 vote.
- **BC Commerce Center (LGA 2023-003).** The application proposed a future land use amendment on 42.71 acres of land from AGR to CMR/AGR in order to develop light industrial uses, with a maximum potential of 925,410 square feet (0.45 floor area ratio). The site is located on the north side of Boynton Beach Boulevard, between Acme Dairy Road and the Florida's Turnpike. The Planning Commission recommended approval with modifications (limiting site to 0.35 floor area ratio) with a vote of 9 to 0 at the January 13, 2023 public hearing. The BCC transmitted this amendment on February 1, 2023 with a condition limiting the site to 719,764 square feet (0.35 floor area ratio). At the August 24, 2023 BCC Zoning public hearing, the Board adopted the amendment in a 7 to 0 vote.
- **EJKJ Industrial (LGA 2023-004).** The application proposed a future land use amendment on 7.93 acres of land from AGR to CMR/AGR in order to develop light industrial uses, with a maximum potential of 155,444 square feet (0.45 floor area ratio). The site is located on the west side of State Road 7, approximately 0.15 miles south of Atlantic Avenue. The Planning Commission recommended approval with modifications with a vote of 8 to 2 at the October 14, 2022 Planning Commission Hearing. At the November 28, 2022 BCC Transmittal public hearing, the Board transmitted the amendment in a 7 to 0 vote. At the August 24, 2023 BCC Zoning public hearing, the Board adopted the amendment in a 6 to 1 vote.
- **SR 7 Business Plaza (LGA 2023-006).** The application proposed a future land use amendment on 40 acres of land from AGR to CMR/AGR in order to develop light industrial uses, with a maximum potential of 784,080 square feet (0.45 floor area ratio). The site is located on the north side of Happy Hollow Road, fronting State Road 7, approximately 0.3 miles west of Smith Sundry Road. The Planning Commission recommended approval with conditions with a vote of 7 to 3 at the November 4, 2022 Planning Commission Hearing. At the November 28, 2022 BCC Transmittal public hearing, the Board transmitted the amendment in a 6 to 1 vote. At the May 25, 2023 BCC Zoning public hearing, the Board adopted the amendment in a 6 to 1 vote with a condition limiting the site to 700,000 square feet of warehouse and 63,000 square feet of general office.

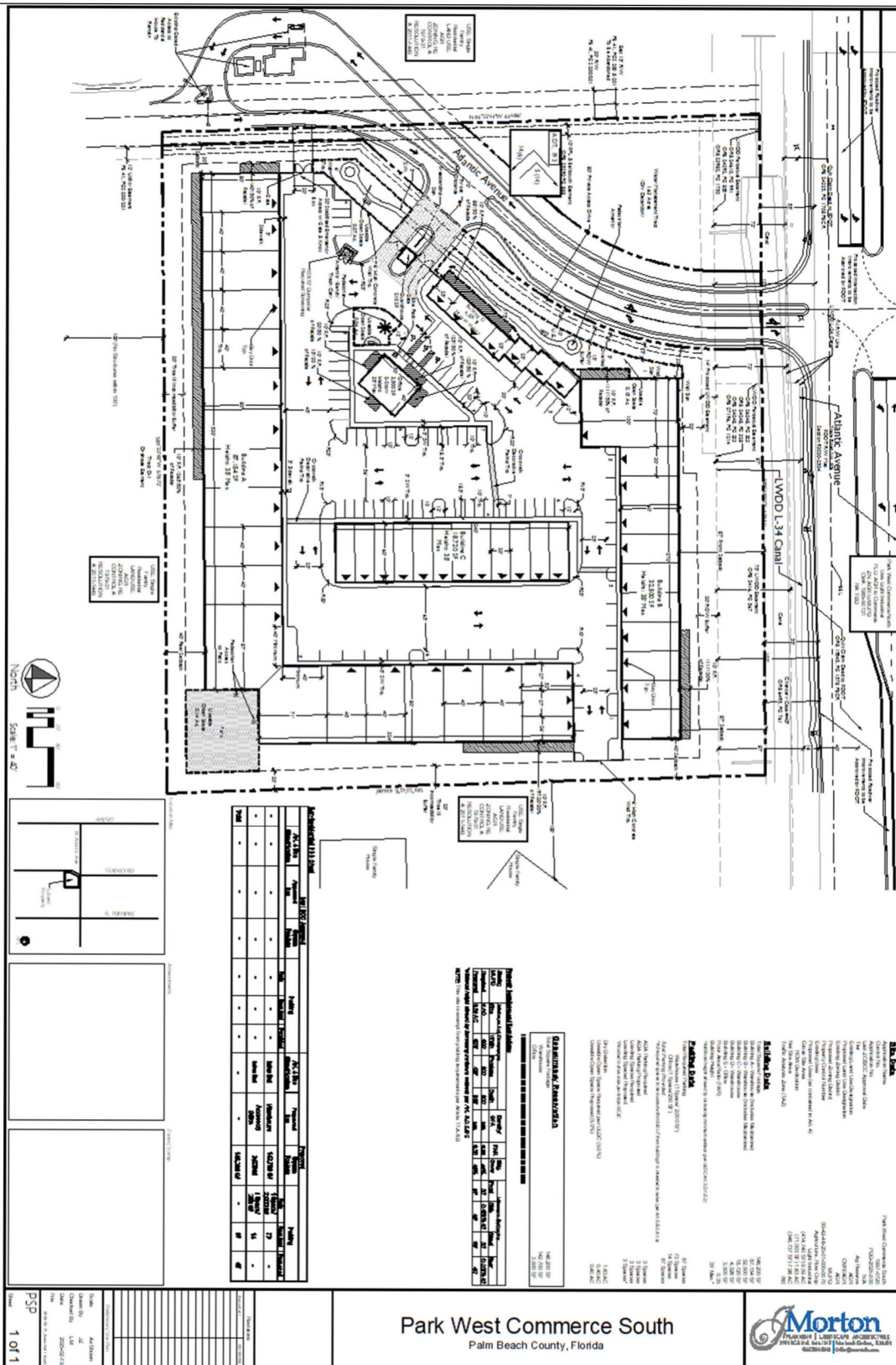
- **LTG Sports Turf (LGA 2023-007).** The application proposed a future land use amendment on 40 acres of land from AGR to CMR/AGR in order to develop light industrial uses, with a maximum potential of 98,280 square feet (0.45 floor area ratio). The site is located on the north side of 100<sup>th</sup> Street S (Boynton Beach Boulevard), approximately 0.13 miles west of State Road 7. The Planning Commission recommended approval with modifications consisted of an additional condition of approval to limit uses allowed under the proposed Commerce future land use designation to 30,000 square feet, with a vote of 9 to 1 at the October 14, 2022 Planning Commission Hearing. At the November 28, 2022 BCC Transmittal public hearing, the Board transmitted the amendment in a 7 to 0 vote. At the March 23, 2023 BCC zoning public hearing, the Board adopted the amendment in a 6 to 1 vote.
- **Bedner's Market (LGA 2024-003) and Text.** This privately proposed future land amendment requested to change the future land use designation from Agricultural Reserve (AGR) to Commerce with an underlying Agricultural Reserve (CMR/AGR) in order to develop light industrial uses with up to 213,444 square feet (0.35 FAR) of warehouse office uses on two sites located west of State Road 7 on the north and south sides of Lee Road. This amendment also requested a text amendment to revise the Comprehensive Plan to define Agriculture Marketplace and allow the use within the preserve area of an AGR-MUPD for Agriculture Marketplaces approved prior to May 31, 2013. The planning commission recommended denial with a vote of 7 to 4 vote at the October 13, 2023. At the August 22, 2024 BCC public hearing, the Board adopted the amendment in a 5 to 1 vote.
- **Olympus MUPD f.k.a Gold Coast Logistics (LGA 2024-04) and Text.** In 2023, the applicant submitted a privately proposed text amendment requesting to revise a Future Land Use Element policy 1.5-v to allow sites north of La Reina Road (instead of Rio Grande Avenue) on State Road 7 in the Agricultural Reserve Tier to be eligible for the Commerce future land use designation. The text amendment was initiated by the Board of County Commissioners on May 3, 2023. Subsequently, the property owner submitted a FLUA amendment request for a change from AGR to CMR/AGR in order to develop light industrial uses, with a maximum potential of 96,507 square feet (0.35 FAR). The Planning Commission recommended denial of the FLUA and text amendment with a vote of 12 to 0 at the September 8, 2023 hearing. The applicant ultimately withdrew the request at the November 1, 2023 BCC Transmittal Hearing.



# Exhibit 10 Agricultural Reserve Commerce FLUA Amendments Map







**Exhibit 12**  
**Correspondence**

---