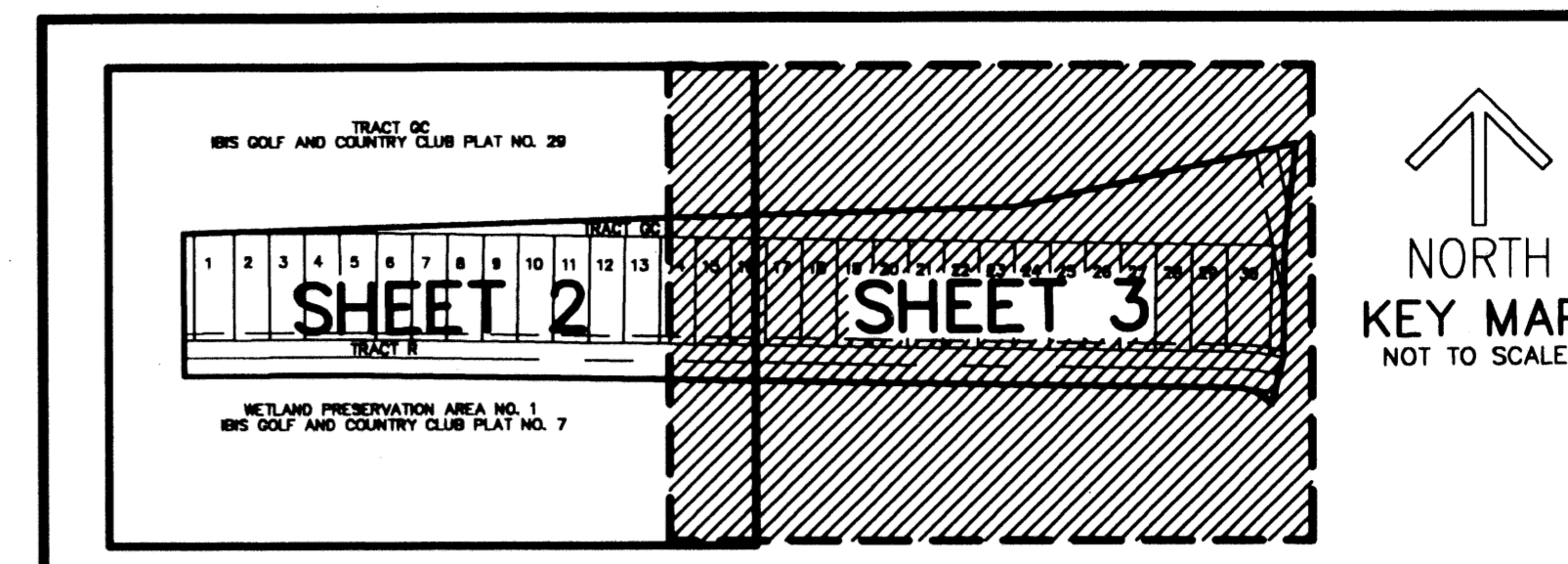
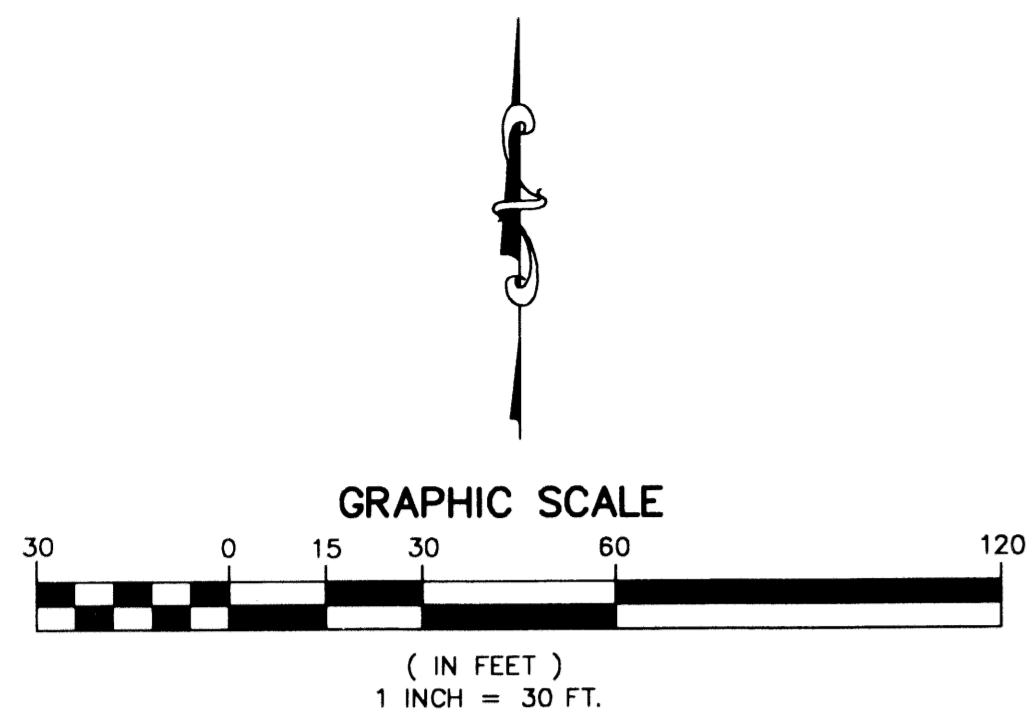


# IBIS GOLF AND COUNTRY CLUB PLAT NO. 34

A PLANNED UNIT DEVELOPMENT  
 BEING A REPLAT OF A PORTION OF TRACTS H AND E, IBIS GOLF AND COUNTRY CLUB  
 PLAT NO. 7, AS RECORDED IN PLAT BOOK 67, PAGES 152 THROUGH 168,  
 LYING IN SECTION 36, TOWNSHIP 42 SOUTH, RANGE 41 EAST,  
 CITY OF WEST PALM BEACH, PALM BEACH COUNTY, FLORIDA

PREPARED BY  
 DAVID P. LINDLEY  
 OF  
**CAULFIELD and WHEELER, INC.**  
 ENGINEERS - PLANNERS - SURVEYORS  
 7301-A WEST PALMETTO PARK ROAD, SUITE 100A  
 BOCA RATON, FLORIDA 33433 - (561)392-1991  
 FEBRUARY - 2003

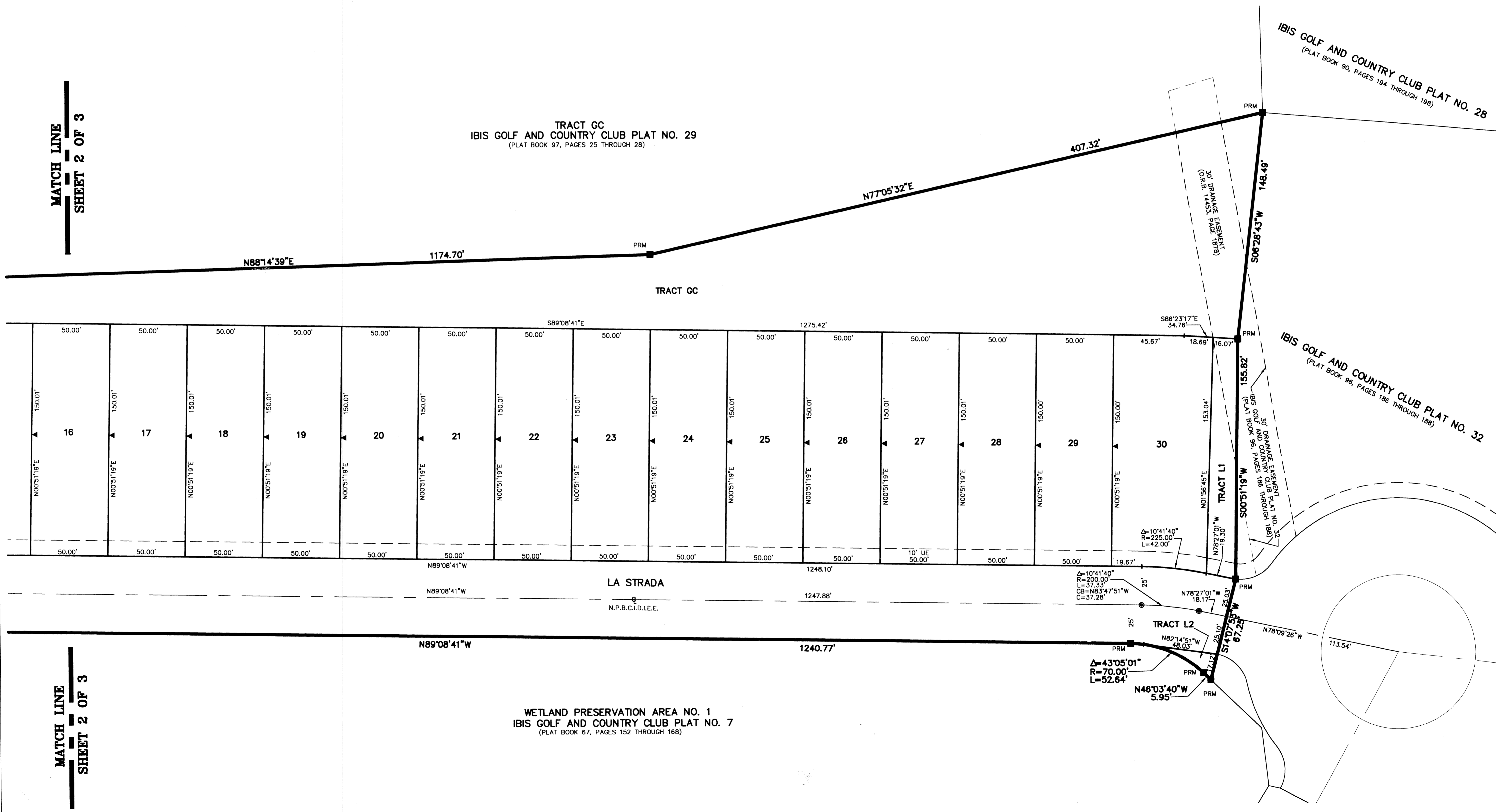


STATE OF FLORIDA  
 COUNTY OF PALM BEACH  
 THIS PLAT WAS FILED FOR  
 RECORD AT \_\_\_\_\_ M.  
 THIS \_\_\_\_\_ DAY OF \_\_\_\_\_  
 A.D. 2003 AND DULY RECORDED  
 IN PLAT BOOK \_\_\_\_\_ ON  
 PAGES \_\_\_\_\_ AND \_\_\_\_\_

DOROTHY H. WILKEN

BY: \_\_\_\_\_  
 DEPUTY CLERK

SHEET 3 OF 3



MATCH LINE  
 SHEET 2 OF 3

MATCH LINE  
 SHEET 2 OF 3