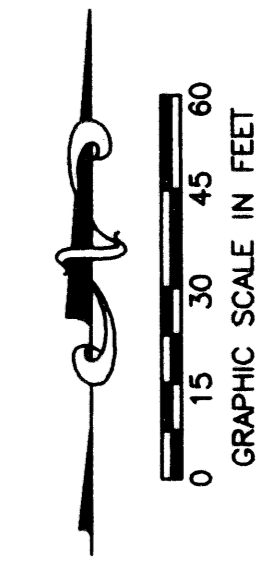
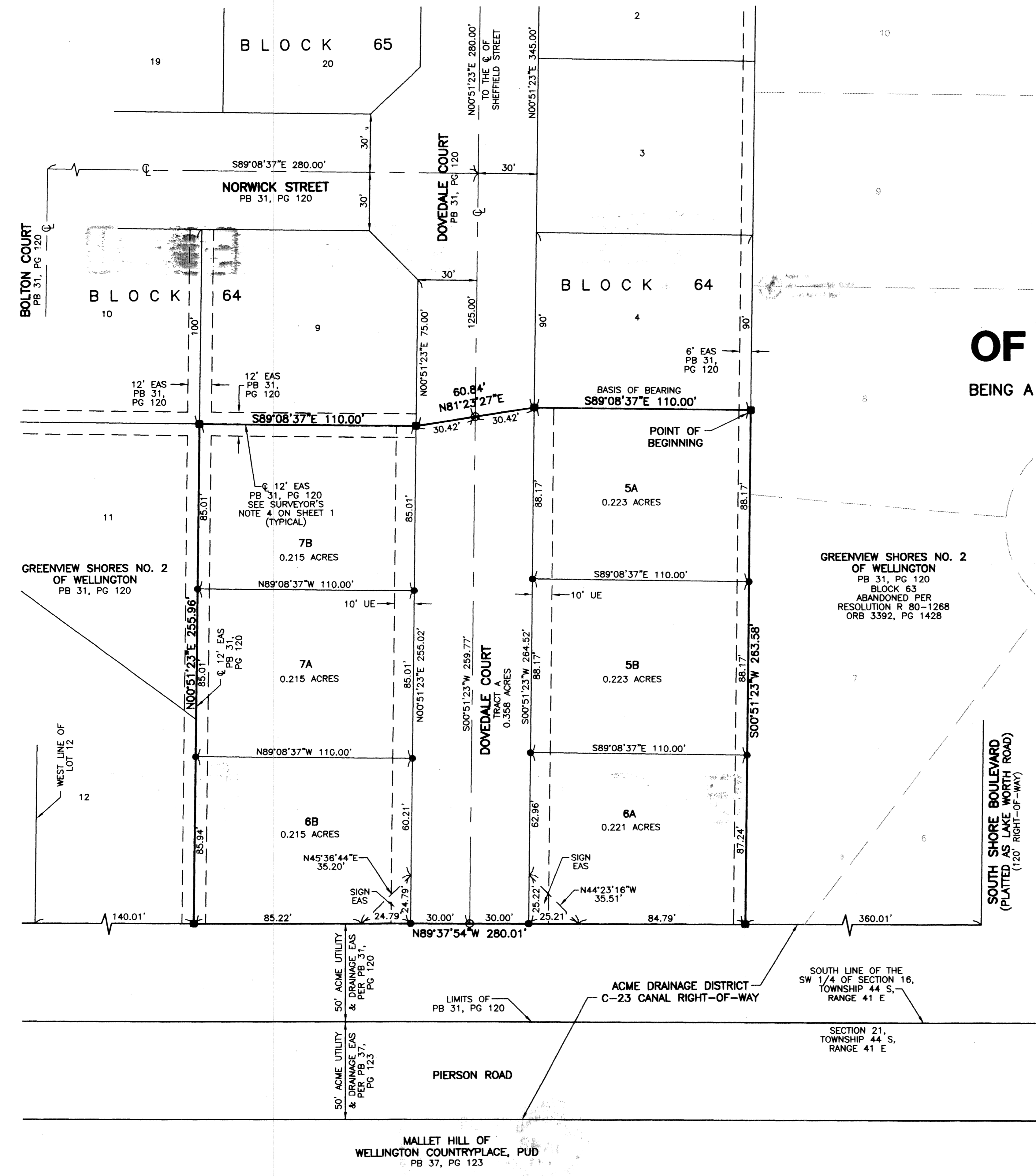


164



STATE OF FLORIDA
COUNTY OF PALM BEACH
THIS PLAT WAS FILED FOR
RECORD _____ DAY OF _____
AD, 2003 AND DULY RECORDED
IN PLAT BOOK _____ ON PAGES
THROUGH _____
DOROTHY H. WILKEN, CLERK
BY: _____, D.C.

CIRCUIT COURT SEAL



GREENVIEW SHORES NO. 2 OF WELLINGTON REPLAT NO. ONE

BEING IN SECTION 16, TOWNSHIP 44 SOUTH, RANGE 41 EAST,
BEING A REPLAT OF LOTS 5, 6, 7 AND 8, BLOCK 64 AND A PORTION OF DOVEDALE COURT,
GREENVIEW SHORES NO. 2 OF WELLINGTON, PB 31, PG 120
VILLAGE OF WELLINGTON, PALM BEACH COUNTY, FLORIDA
SHEET 1 OF 2

- LEGEND**
- EAS EASEMENT
 - ME MAINTENANCE EASEMENT
 - ORB OFFICIAL RECORD BOOK
 - PB PLAT BOOK
 - PG PAGE
 - PERMANENT REFERENCE MONUMENT
SET LB 048 (4"x4" CONCRETE)
 - SET 5/8" IRON ROD WITH
PLASTIC CAP LB 048
 - ⊙ PERMANENT CONTROL POINT
 - SET LB 048
 - ⊔ CENTERLINE

THIS INSTRUMENT WAS PREPARED BY KEVIN M. BECK, P.S.M. IN THE
OFFICES OF MOCK, ROOS & ASSOCIATES, INC., 5720 CORPORATE WAY,
WEST PALM BEACH, FLORIDA 33407.

SHEET 2 OF 2

SCALE:
1" = 30'
P.A. NO.:
A3701.00
DATE:
MAY 2003
DRAWING NO.:
44-41-16-02

FLORIDA L.B. NO. 48
MOCK ROOS
ENGINEERS SURVEYORS PLANNERS
5720 Corporate Way, West Palm Beach, Florida 33407
(561) 683-3113, fax 478-7248

**GREENVIEW SHORES NO. 2 OF
WELLINGTON REPLAT NO. ONE**
BEING A REPLAT OF LOTS 5, 6, 7 AND 8, BLOCK 64
AND A PORTION OF DOVEDALE COURT,
GREENVIEW SHORES NO. 2 OF WELLINGTON,
PB 31, PG 120
VILLAGE OF WELLINGTON,
PALM BEACH COUNTY, FLORIDA

S:\acme\acmeegree\dwg\greenrp01.dwg 10/6/2003 3:56:48 PM EDT

REV.: 10-05-03
CAD FILE:
ACMEGREGREENRP01

MALLET HILL OF
WELLINGTON COUNTRYPLACE, PUD
PB 37, PG 123

ACME DRAINAGE DISTRICT
C-23 CANAL RIGHT-OF-WAY

SOUTH LINE OF THE
SW 1/4 OF SECTION 16,
TOWNSHIP 44 S.,
RANGE 41 E

SECTION 21,
TOWNSHIP 44 S.,
RANGE 41 E