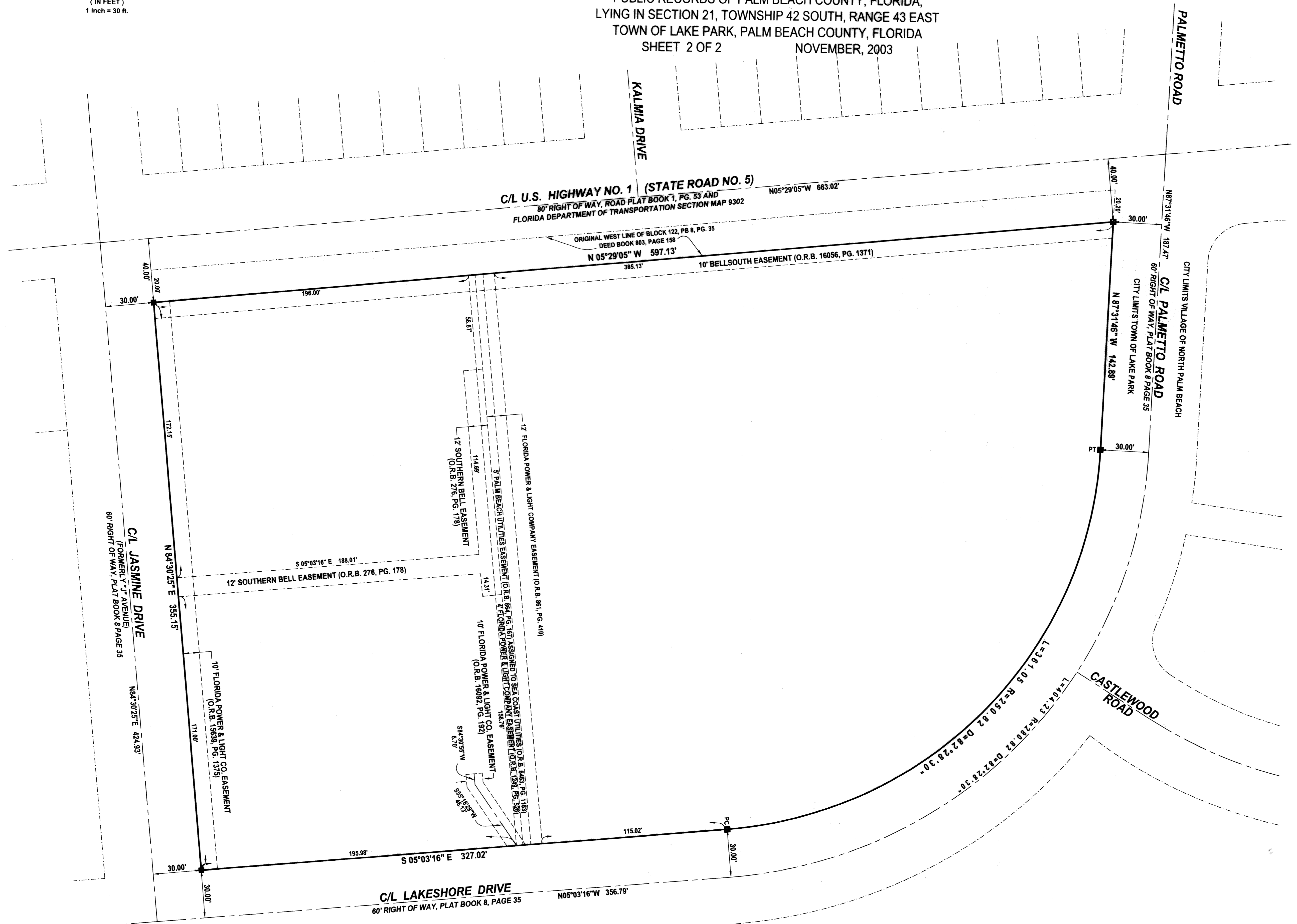
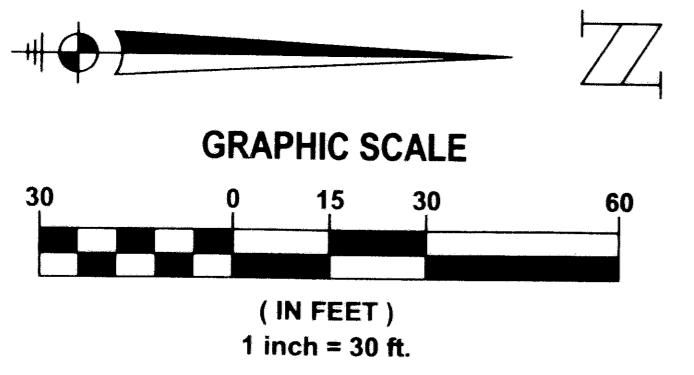


149

STEWART TOYOTA

BEING A REPLAT OF A PORTION OF LOTS 1 THROUGH 17, 41 AND 42 ALL OF LOTS 18 THROUGH 40, BLOCK 122, KELSEY CITY, AS RECORDED IN PLAT BOOK 8, PAGE 35, PUBLIC RECORDS OF PALM BEACH COUNTY, FLORIDA, LYING IN SECTION 21, TOWNSHIP 42 SOUTH, RANGE 43 EAST TOWN OF LAKE PARK, PALM BEACH COUNTY, FLORIDA
SHEET 2 OF 2 NOVEMBER, 2003

STATE OF FLORIDA
COUNTY OF PALM BEACH
This plat was filed for record at _____ M. this ____ day of _____, 2003, and duly recorded in Plat Book No. _____ on Pages _____ thru _____.
DOROTHY H. WILKEN
Clerk Circuit Court
By _____ D.C.



LIDBERG LAND SURVEYING, INC.
675 West Indiantown Road, Suite 200, Jupiter, Florida 33458 TEL. 561-746-8454

CAD	K:\AUTOCAD2000\214243\8-35\02-174\DWG\02-174-306.DWG		
REF	K:\AUTOCAD2000\214243\8-35\02-174\DWG\02-174-112.DWG		
FLD		FB.	FC.
OFF	S.F.B.		JOB 02-174 (306)
CKD	D.C.L.	SHEET 2 OF 2	DATE 07/01/03
			DWG D02-174P