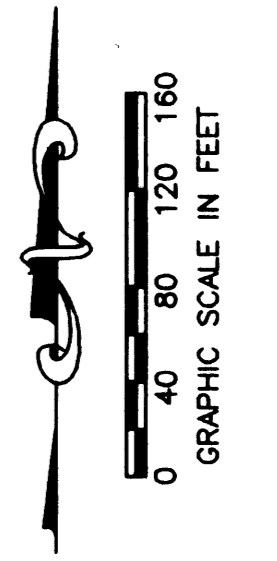


STATE OF FLORIDA
COUNTY OF PALM BEACH
THIS PLAT WAS FILED FOR
RECORD _____ DAY OF _____
AD. 2003 AND DULY RECORDED
IN PLAT BOOK _____ ON PAGES
_____ THROUGH _____
DOROTHY H. WILKEN, CLERK
BY: _____, D.C.



EASTWOOD NO. 3
OF WELLINGTON-P.U.D.
PB 35, PG 168
BLOCK 3

ACME IMPROVEMENT DISTRICT
C-17 CANAL
PB 35, PGS 168-171

EASTWOOD NO. 3
OF WELLINGTON-P.U.D.
PB 35, PG 168
BLOCK 8

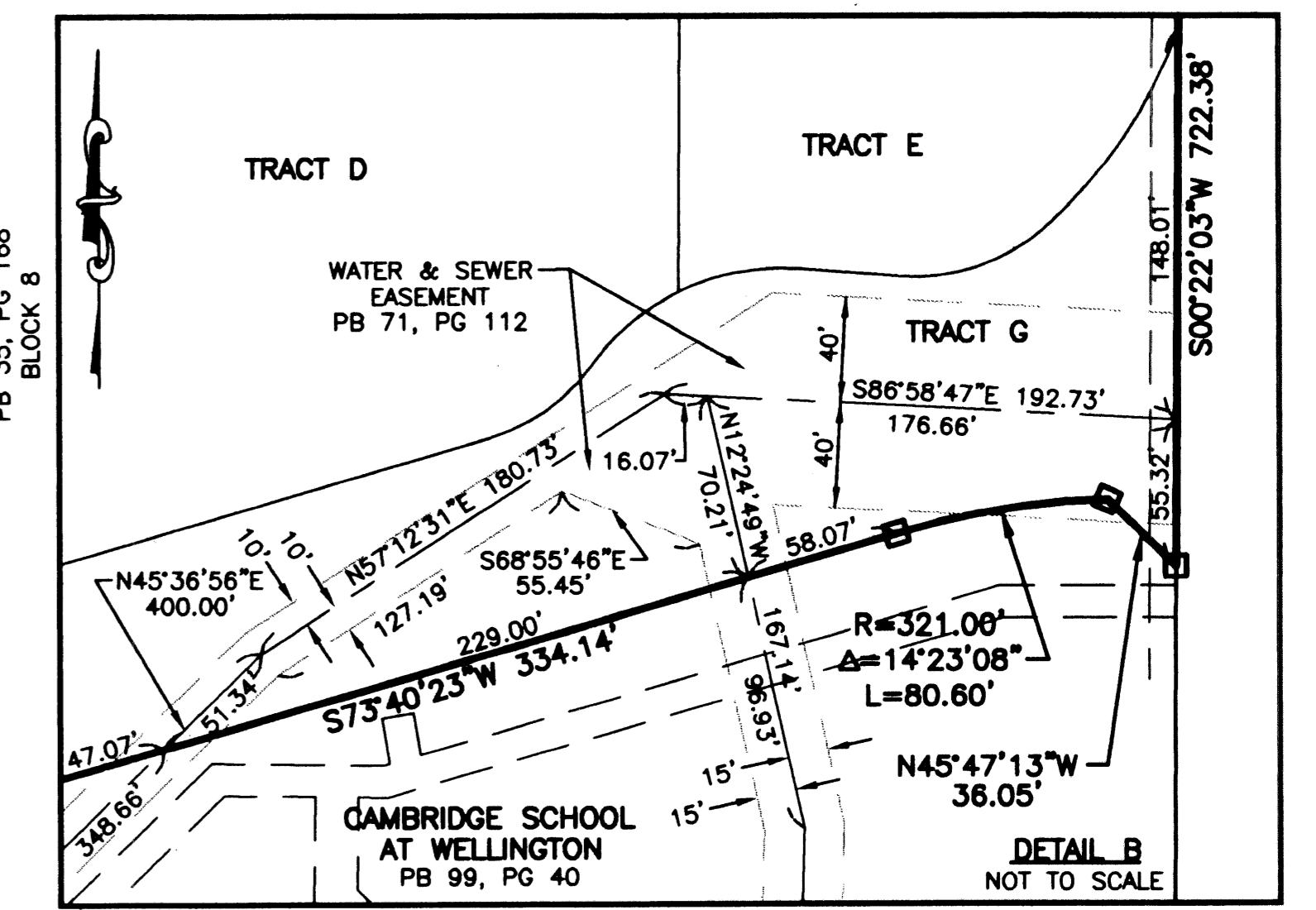
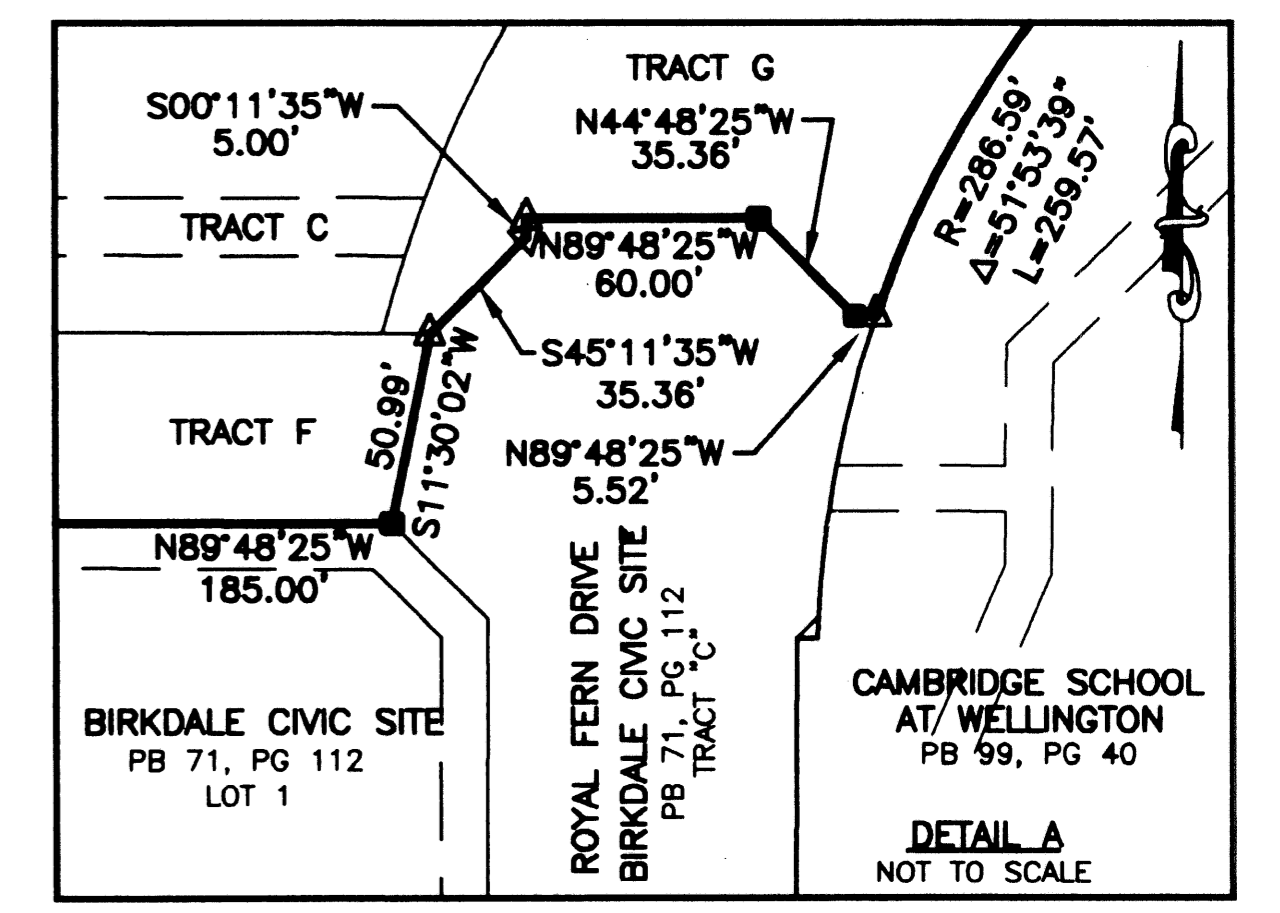
BOUNDARY TREE
LANE
PB 35, PG 168

EASTWOOD NO. 3
OF WELLINGTON-P.U.D.
PB 35, PG 168
BLOCK 8

THIS INSTRUMENT WAS PREPARED BY KEVIN M. BECK, P.S.M. IN THE
OFFICES OF MOCK, ROOS & ASSOCIATES, INC., 5720 CORPORATE WAY,
WEST PALM BEACH, FLORIDA 33407.

BIRKDALE CIVIC SITE REPLAT NO. ONE

BEING IN SECTION 11, TOWNSHIP 44 SOUTH, RANGE 41 EAST,
BEING A PORTION OF LOT 2 AND TRACT "C",
BIRKDALE CIMC SITE, PLAT BOOK 71, PG 112
VILLAGE OF WELLINGTON, PALM BEACH COUNTY, FLORIDA
SHEET 2 OF 2

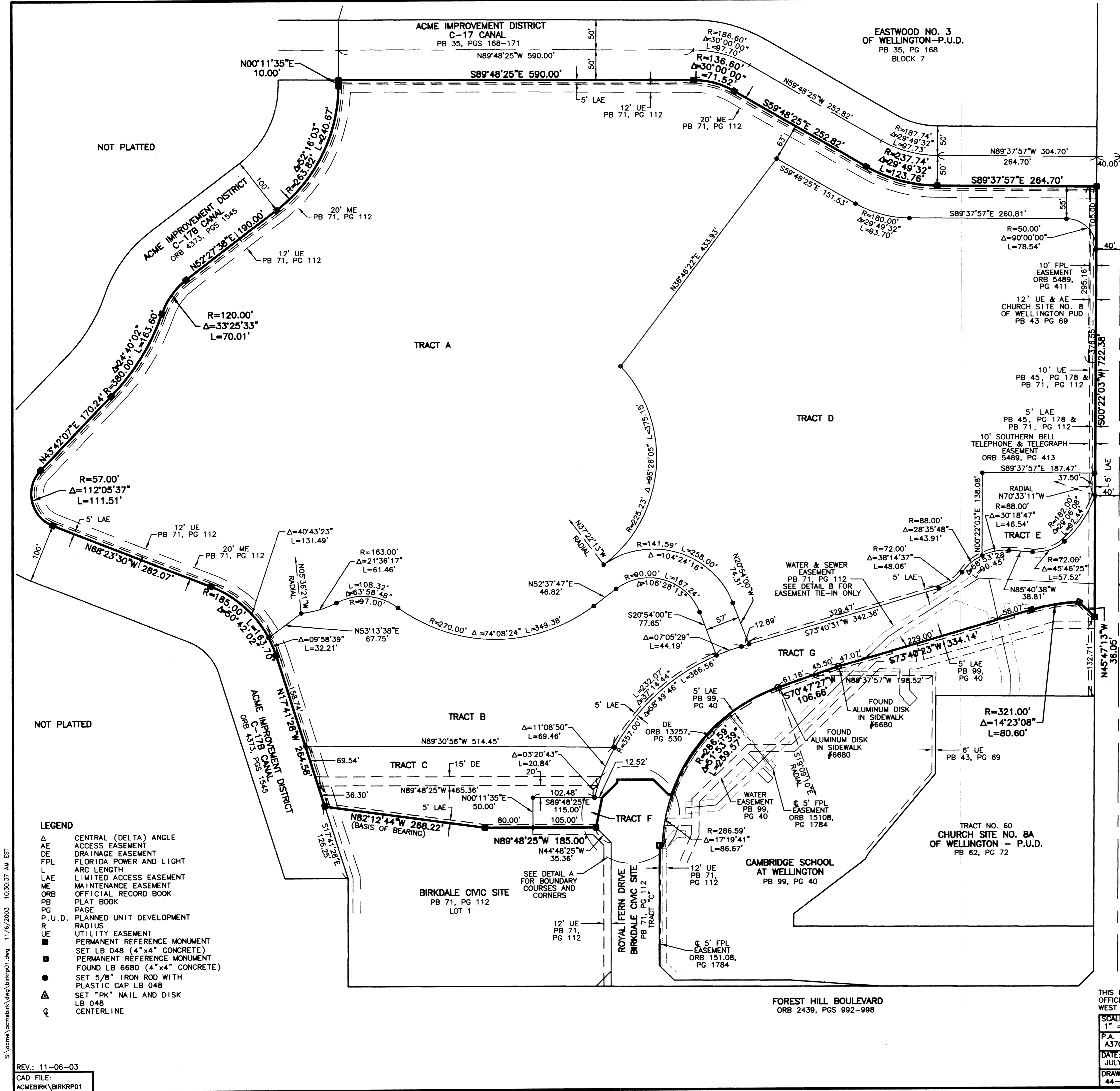


FLORIDA L.B. NO. 48

MOCK ROOS
ENGINEERS ARCHITECTS PLANNERS

5720 Corporate Way, West Palm Beach, Florida 33407
(561) 683-3113, fax 478-7248

**BIRKDALE CIMC SITE
REPLAT NO. ONE**
IN SECTION 11, TOWNSHIP 44 SOUTH, RANGE 41 EAST,
A PORTION OF LOT 2 AND TRACT "C",
BIRKDALE CIMC SITE,
PLAT BOOK 71, PG 112
VILLAGE OF WELLINGTON,
PALM BEACH COUNTY, FLORIDA



- LEGEND**
- Δ CENTRAL (DELTA) ANGLE
 - AE ACCESS EASEMENT
 - DE DRAINAGE EASEMENT
 - FPL FLORIDA POWER AND LIGHT
 - L ARC LENGTH
 - LAE LIMITED ACCESS EASEMENT
 - ME MAINTENANCE EASEMENT
 - ORB OFFICIAL RECORD BOOK
 - PB PLAT BOOK
 - PG PAGE
 - P.U.D. PLANNED UNIT DEVELOPMENT
 - R RADIUS
 - UE UTILITY EASEMENT
 - PERMANENT REFERENCE MONUMENT
 - SET LB 048 (4"x4" CONCRETE)
 - PERMANENT REFERENCE MONUMENT
 - FOUND LB 6680 (4"x4" CONCRETE)
 - SET 5/8" IRON ROD WITH PLASTIC CAP LB 048
 - SET "PK" NAIL AND DISK LB 048
 - CL CENTERLINE

S:\csm\acme\brk\img\brkrp01.dwg 11/6/2003 10:30:37 AM EST

REV.: 11-06-03
CAD FILE:
ACMEBIRK\BIRKRP01

FOREST HILL BOULEVARD
ORB 2439, PGS 992-998