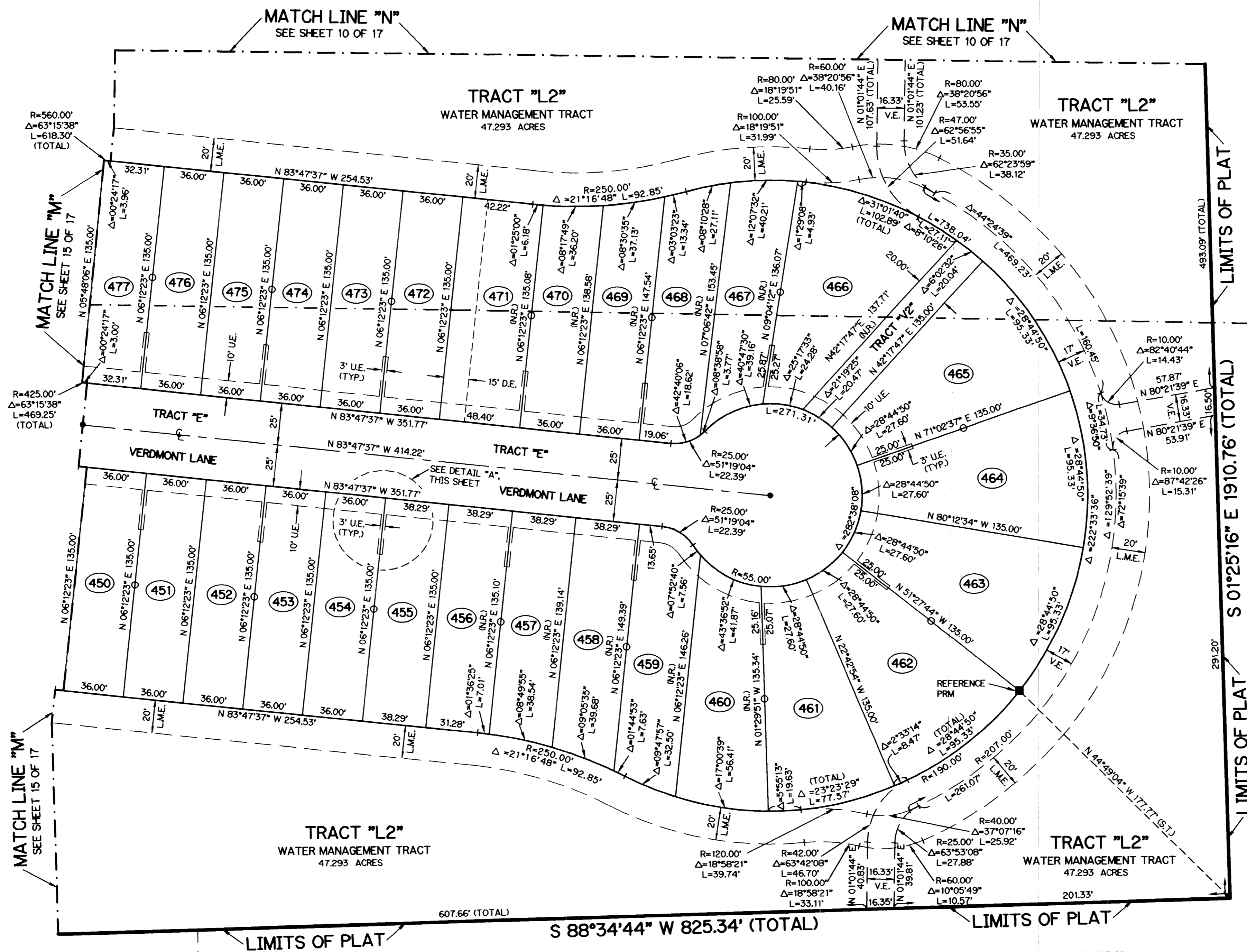
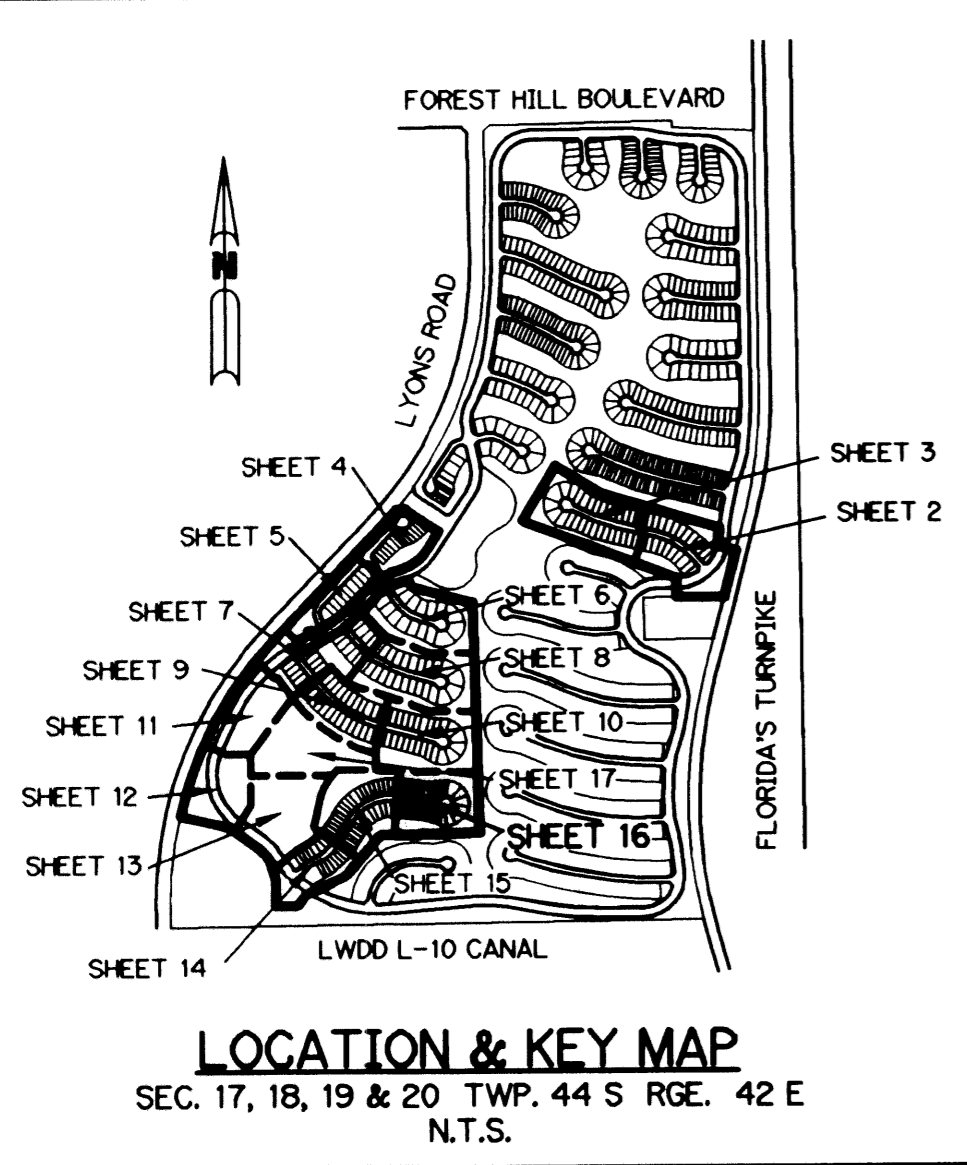


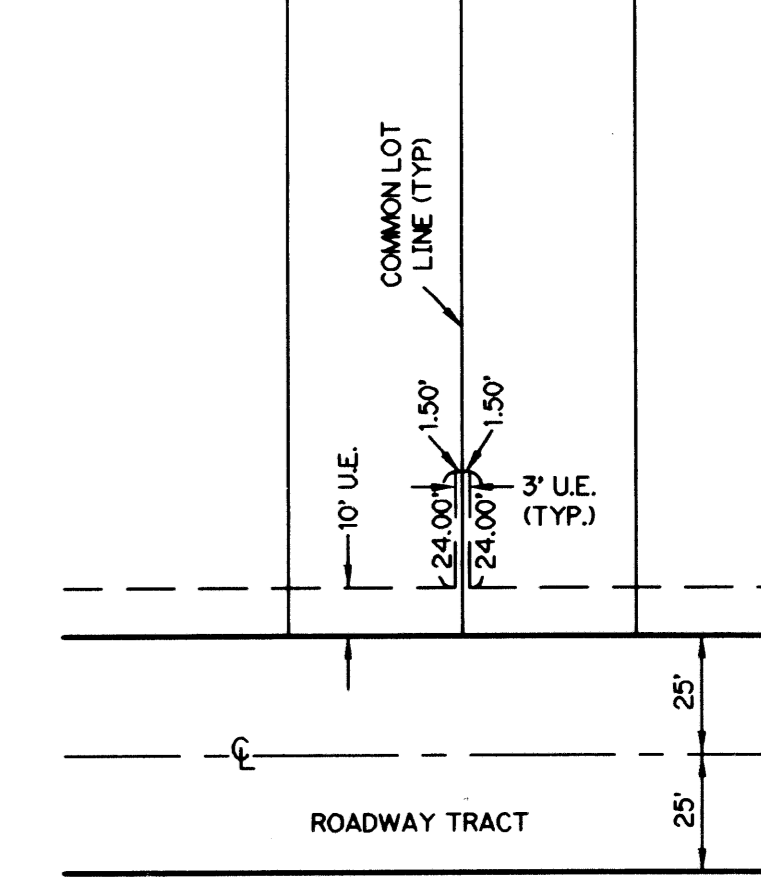
VILLAGEWALK OF WELLINGTON - PLAT FOUR

BEING A REPLAT OF A PORTION OF TRACTS 18, 19, 20, 21, 22, 26, 27, 28, 29, 30, 31, 32, 37, 38, 39, 40, 41, 44, 53, 54, 55, 56, 58, AND 59, AND ALL OF TRACTS 42 AND 43, TOGETHER WITH THAT PORTION OF THE ROAD, DYKE AND DITCH RESERVATIONS, 30 FEET IN WIDTH, LYING ADJACENT TO AND CONTIGUOUS WITH THOSE TRACTS, ALL IN BLOCK 20, ACCORDING TO THE PLAT OF PALM BEACH FARMS CO. PLAT NO. 3 AS RECORDED IN PLAT BOOK 2, PAGES 45 THROUGH 54, INCLUSIVE, OF THE PUBLIC RECORDS OF PALM BEACH COUNTY, FLORIDA, LYING IN SECTIONS 17, 18, 19, AND 20, TOWNSHIP 44 SOUTH, RANGE 42 EAST, VILLAGE OF WELLINGTON, PALM BEACH COUNTY, FLORIDA

SHEET 16 OF 17 SEPTEMBER, 2003

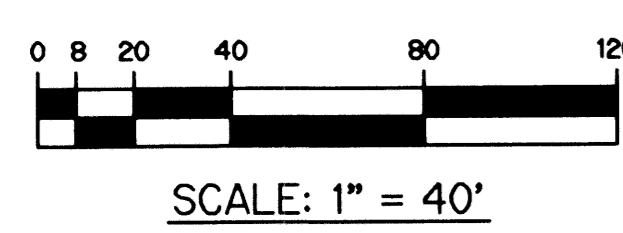


30' ROAD PER PALM BEACH FARMS CO. PLAT NO. 3 - ABANDONED SOUTH OF LYONS ROAD BY PALM BEACH COUNTY IN O.R.B. 5775, PG. 96 AND O.R.B. 5704, PG. 498



DETAIL "A" SCALE: 1" = 40'

- LEGEND:
- - PERMANENT REFERENCE MONUMENT, LB #6674
 - - PERMANENT CONTROL POINT, LB #6674
 - Δ - DELTA ANGLE
 - - CENTERLINE
 - BE - BUFFER EASEMENT
 - CB - CHORD BEARING
 - CH - CHORD LENGTH
 - DB - DEED BOOK
 - DE - DRAINAGE EASEMENT
 - L - ARC LENGTH
 - L.A.E. - LIMITED ACCESS EASEMENT
 - L.M.A.E. - LAKE MAINTENANCE ACCESS EASEMENT
 - L.M.E. - LAKE MAINTENANCE EASEMENT
 - L.W.D.D. - LAKE WORTH DRAINAGE DISTRICT
 - N.R. - NOT RADIAL
 - N.T.S. - NOT TO SCALE
 - O.R.B. - OFFICIAL RECORD BOOK
 - P.B. - PLAT BOOK
 - PGS. - PAGES
 - P.O.B. - POINT OF BEGINNING
 - P.O.C. - POINT OF COMMENCEMENT
 - P.R.M. - PERMANENT REFERENCE MONUMENT
 - P.S.M. - PROFESSIONAL SURVEYOR AND MAPPER
 - R - RADIUS
 - RAD - RADIAL
 - R/W - RIGHT-OF-WAY
 - S.T. - SURVEY TIE
 - U.E. - UTILITY EASEMENT
 - V.E. - VILLAGEWALK EASEMENT
 - - INDICATES COMMON LOT LINE
 - ▲ - INDICATES ZERO SIDE FOR BUILDING



TRACT 54
BLOCK 20
PALM BEACH FARMS
CO. PLAT NO. 3
(P.B. 2, PGS. 45-54)

TRACT 53
BLOCK 20
PALM BEACH FARMS
CO. PLAT NO. 3
(P.B. 2, PGS. 45-54)