

LOWE'S HOME CENTER - TRACT 1 REPLAT

BEING A REPLAT OF TRACT 1 OF "LOWE'S HOME CENTER" - PLAT BOOK 87, PAGE 193

SITUATE IN SECTION 36, TOWNSHIP 43 SOUTH, RANGE 41 EAST

VILLAGE OF ROYAL PALM BEACH

PALM BEACH COUNTY, FLORIDA

SEPTEMBER, 2003 SHEET 2 OF 2

96

STATE OF FLORIDA
COUNTY OF PALM BEACH

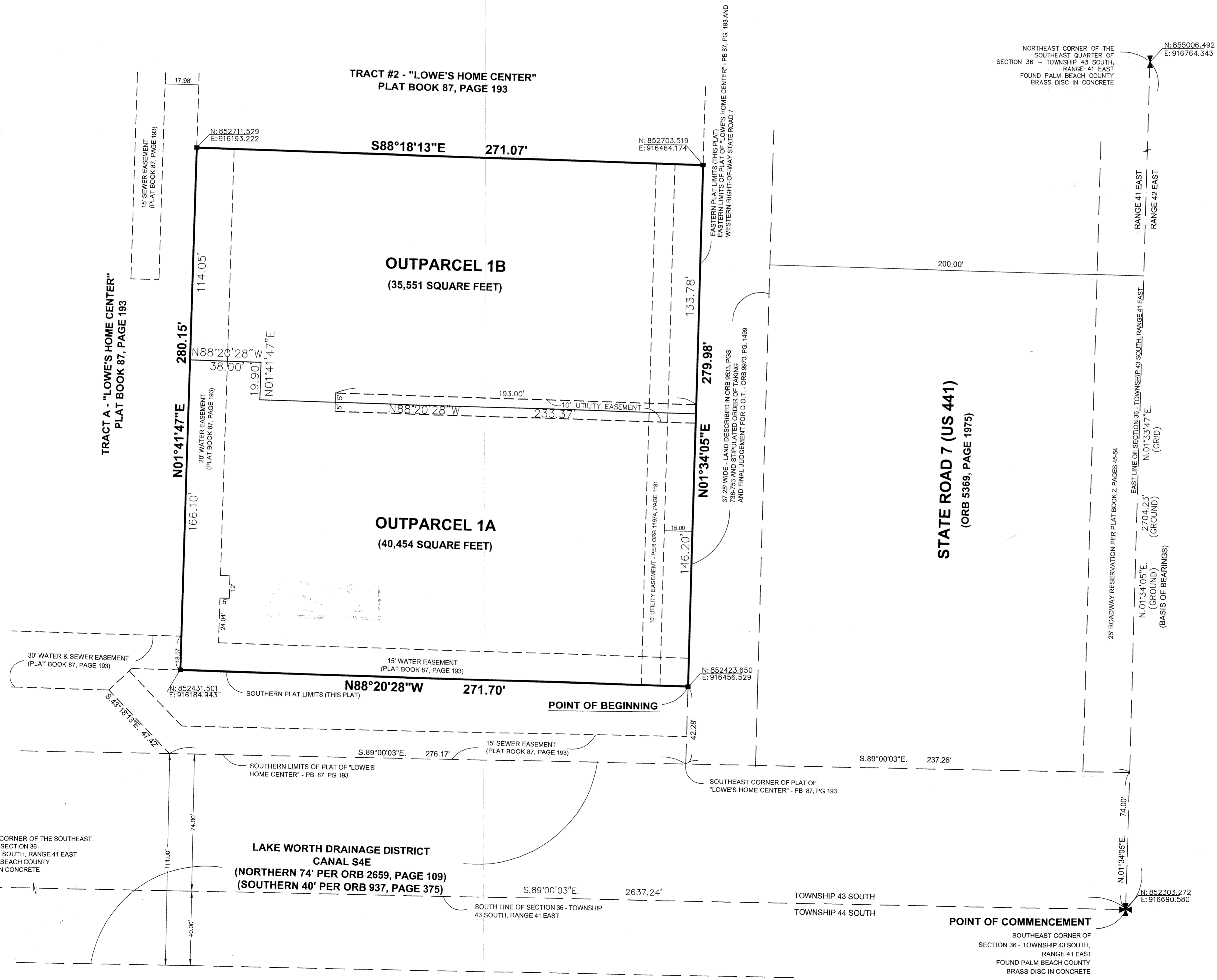
THIS PLAT WAS FILED FOR
RECORD

THIS _____ DAY OF _____

AD, 2003 AND DULY RECORDED
IN PLAT BOOK _____ ON
PAGES _____ AND _____

DOROTHY M. WILKEN, CLERK
BY: _____
D.C.

CIRCUIT COURT SEAL



COORDINATE NOTE:
STATE PLANE COORDINATES SHOWN ARE GRID DATUM, NAD 83 1990 ADJUSTMENT, FLORIDA EAST ZONE, COORDINATE SYSTEM 1983 STATE PLANE TRANSVERSE MERCATOR PROJECTION. LINEAR UNIT = U.S. SURVEY FOOT. ALL DISTANCES ARE GROUND. SCALE FACTOR = 1.00001877. GROUND DISTANCE X SCALE FACTOR = GRID DISTANCE.
N.01°34'05"E. (PLAT BEARING) 00°00'18" COUNTER-CLOCKWISE
N.01°33'47"E. (GRID BEARING) ROTATION (PLAT TO GRID)

THIS INSTRUMENT WAS PREPARED BY ANDREW SNYDER, P.S.M. IN THE OFFICES OF LANDTECH SURVEYING & INSPECTIONS, 1500 NW 62ND STREET, SUITE 511, FORT LAUDERDALE, FLORIDA 33309

LANDTECH
SURVEYING & INSPECTIONS
1500 NW 62ND STREET SUITE 511
FORT LAUDERDALE, FLORIDA 33309
(954) 776-6766 FAX: (954) 776-4660
LANDTECHSURVEY.COM