

VILLAGES OF WINDSOR PLAT FIVE

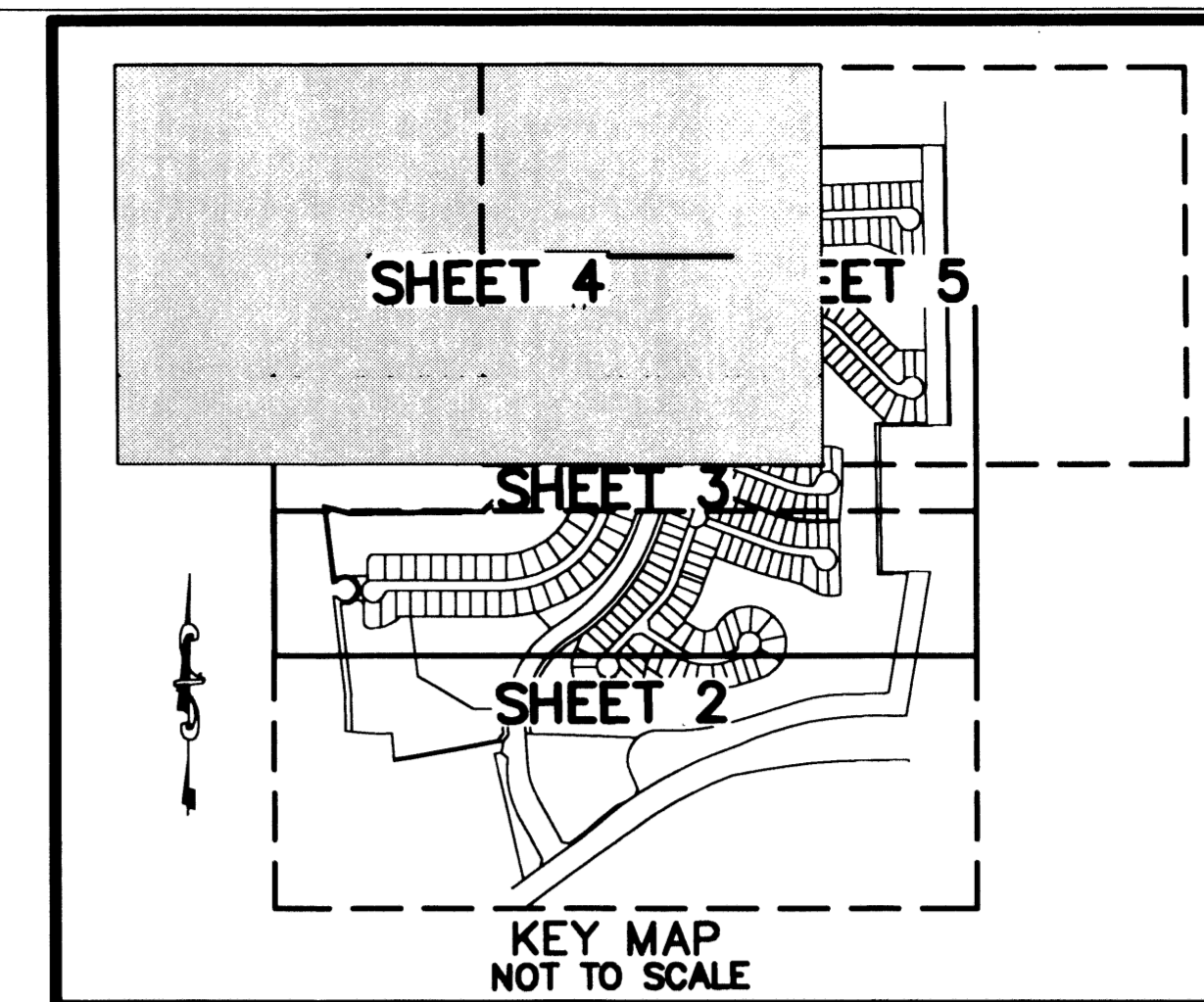
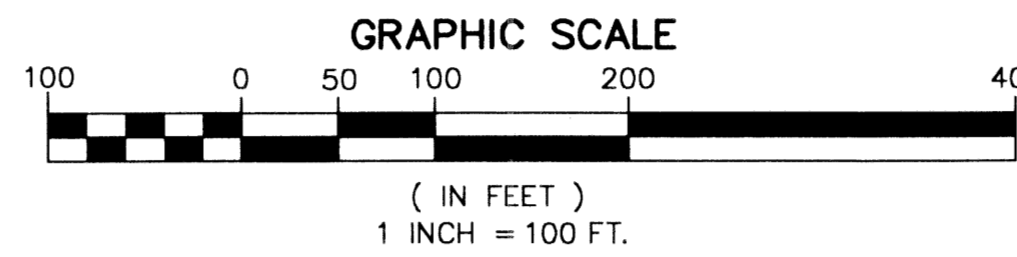
A PLANNED UNIT DEVELOPMENT BEING A PART OF VILLAGES OF WINDSOR PUD
 BEING A REPLAT OF A PORTION OF BLOCKS 37 AND 42, "PALM BEACH FARMS COMPANY PLAT NO. 3, AS RECORDED IN PLAT BOOK 2, PAGES 45 THROUGH 54,
 OF THE PUBLIC RECORDS OF PALM BEACH COUNTY, FLORIDA, LYING IN SECTIONS 5 AND 8, TOWNSHIP 45 SOUTH, RANGE 42 EAST, PALM BEACH COUNTY, FLORIDA

THIS INSTRUMENT PREPARED BY
 DAVID P. LINDLEY
 OF
CAULFIELD and WHEELER, INC.
 SURVEYORS - ENGINEERS - PLANNERS
 7301-A WEST PALMETTO PARK ROAD, SUITE 100A
 BOCA RATON, FLORIDA 33433 - (561)392-1991
 OCTOBER - 2002

NOTES
 COORDINATES, BEARINGS AND DISTANCES

COORDINATES SHOWN ARE GRID
 DATUM = NAD 83 1990 ADJUSTMENT
 ZONE = FLORIDA EAST
 LINEAR UNIT = US SURVEY FEET
 COORDINATE SYSTEM 1983 STATE PLANE
 TRANSVERSE MERCATOR PROJECTION
 ALL DISTANCES ARE GROUND
 SCALE FACTOR = 1.0000195
 GROUND DISTANCE X SCALE FACTOR = GRID DISTANCE
 BEARINGS AS SHOWN HEREON ARE GRID DATUM, NAD 83 1990
 ADJUSTMENT, FLORIDA EAST ZONE.
 COORDINATES SHOWN ON THE CONTROL P.R.M.S MEET OR
 EXCEED THE LOCAL ACCURACY REQUIREMENTS OF A 2
 CENTIMETER GEODETIC CONTROL SURVEY.

N89°26'07"E (PLAT BEARING) 00°24'17" = BEARING ROTATION
 N89°01'50"E (GRID BEARING) (PLAT TO GRID)
 NORTH LINE OF THIS PLAT COUNTERCLOCKWISE



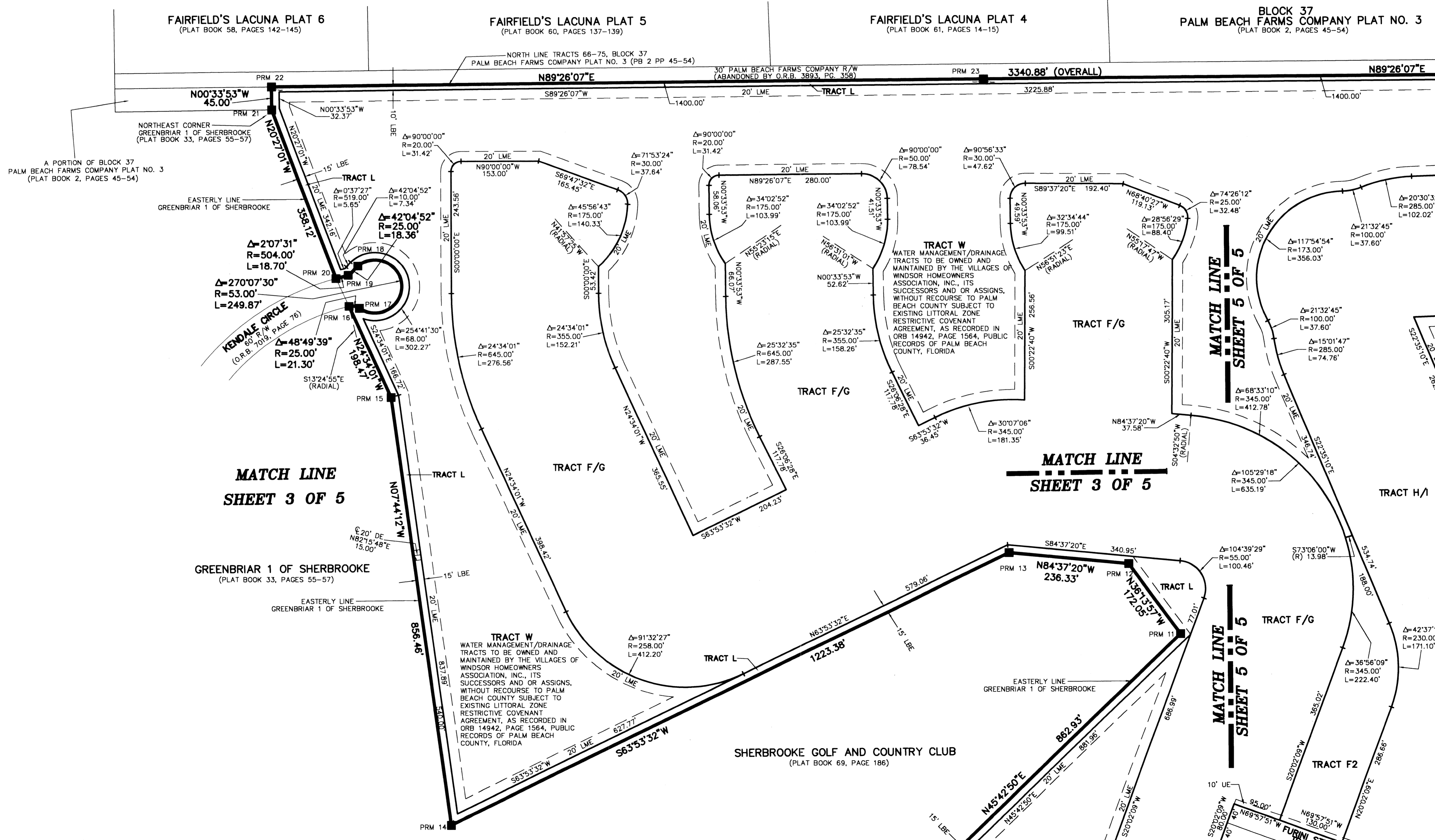
40

STATE OF FLORIDA
 COUNTY OF PALM BEACH
 THIS PLAT WAS FILED FOR
 RECORD AT _____ M.
 THIS _____ DAY OF _____
 A.D. 2003 AND DULY RECORDED
 IN PLAT BOOK _____ ON
 PAGES _____ AND _____

DOROTHY H. WILKEN
 CLERK CIRCUIT COURT

BY: _____
 DEPUTY CLERK

SHEET 4 OF 5



SUBDIVISION VILLAGES OF WINDSOR PLAT 5
 BLOCK 100
 FLOOD ZONE B
 QUAD # 41
 SEC. 41
 T42 S
 PUD NAME VILLAGES OF WINDSOR