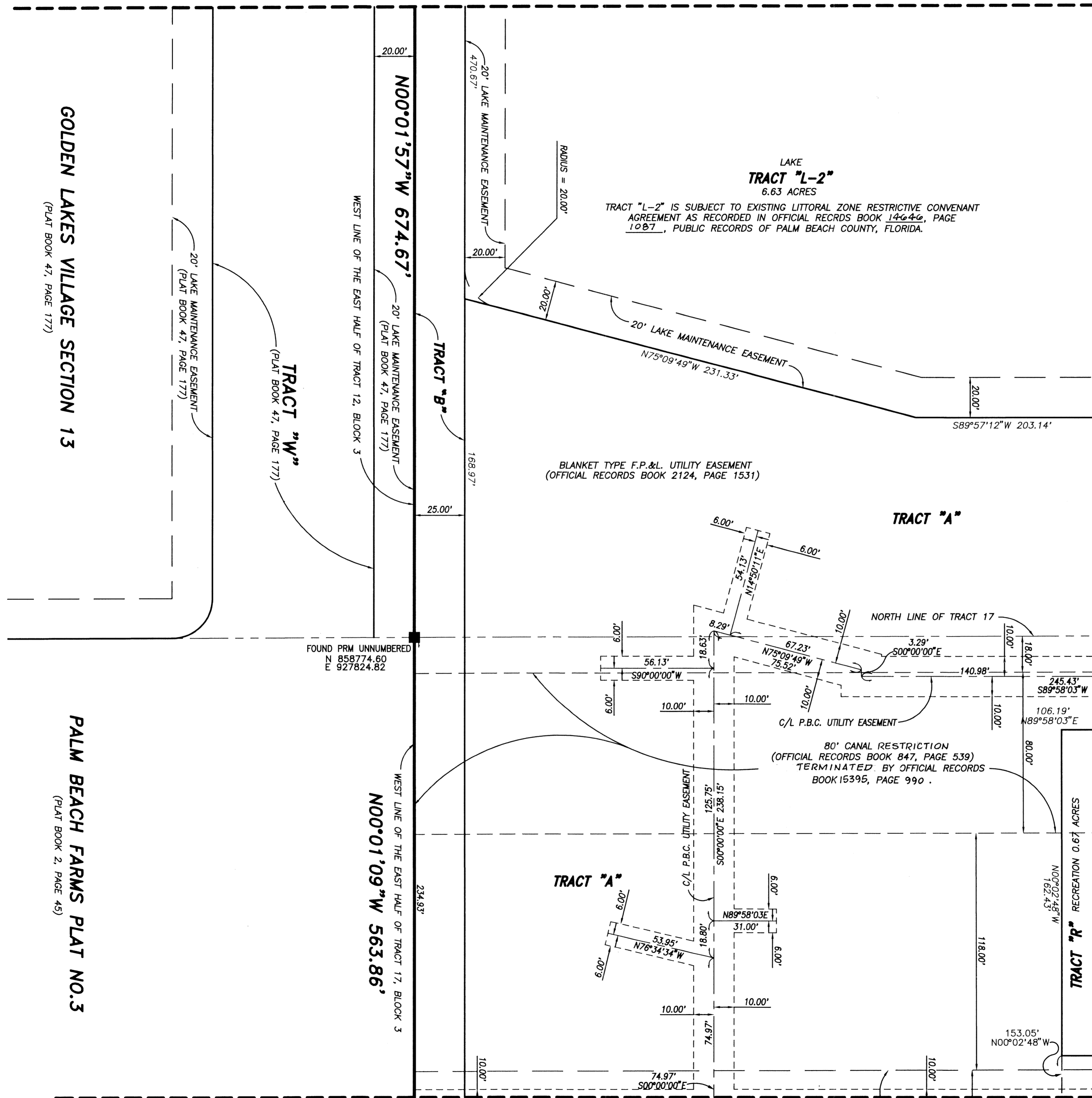


GOLDEN LAKES VILLAGE P.U.D. SECTION EIGHTEEN

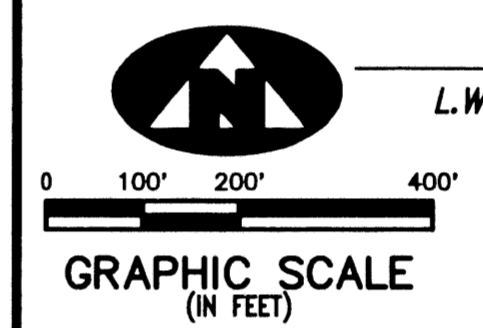
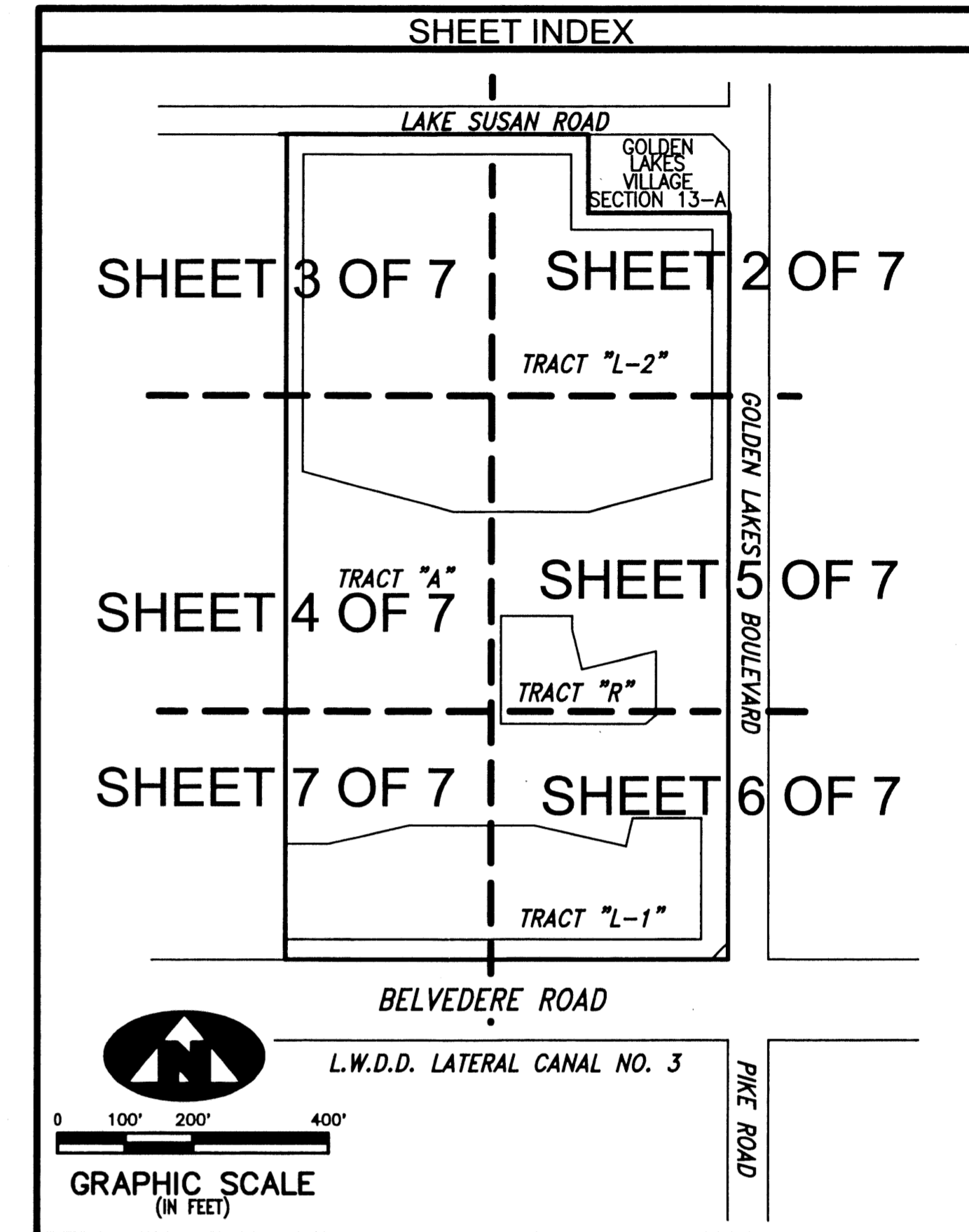
BEING A REPLAT OF PORTIONS OF TRACT 12, TRACT 17, AND A 30' RIGHT-OF-WAY, BLOCK 3, PALM BEACH FARMS CO. PLAT NO. 3, RECORDED IN PLAT BOOK 2 PAGE 45, PUBLIC RECORDS, PALM BEACH COUNTY, FLORIDA AND LYING IN SECTIONS 28 AND 33, TOWNSHIP 43 SOUTH, RANGE 42 EAST, PALM BEACH COUNTY, FLORIDA

MATCH LINE
SEE SHEET 3 OF 7



MATCH LINE
SEE SHEET 5 OF 7

MATCH LINE
SEE SHEET 7 OF 7

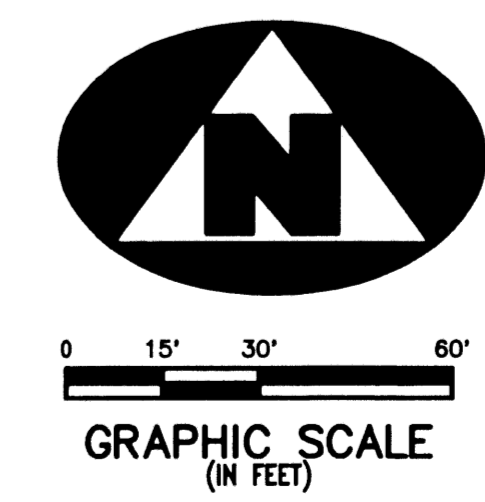


LEGEND:

- C/L DENOTES A CENTERLINE
- L.A.E. DENOTES LIMITED ACCESS EASEMENT
- N 12345.6789 DENOTES NORTHING COORDINATE
- E 12345.6789 DENOTES EASTING COORDINATE
- SPC DENOTES BEARING BASED ON STATE PLANE GRID AZIMUTHS
- P.B.C. DENOTES PALM BEACH COUNTY
- DENOTES A FOUND PERMANENT REFERENCE MONUMENT
- DENOTES A SET PERMANENT REFERENCE MONUMENT (NO 2424)

SURVEYOR'S NOTES:

1. THE BASE BEARING, AS SHOWN HEREON, IS AN ASSUMED BEARING OF SOUTH 00°02'48" EAST ALONG THE EAST LINE OF TRACT 12 AND TRACT 17, BLOCK 3, PALM BEACH FARMS THE EAST LINE OF TRACT 12 AND TRACT 17, BLOCK 3, PALM BEACH FARMS COMPANY PLAT NO. 3, PLAT BOOK 2, PAGE 45, AND ALL OTHER BEARINGS ARE RELATIVE THERETO.
2. THIS INSTRUMENT WAS PREPARED BY WM. R. VAN CAMPEN, P.S.M. IN AND FOR THE OFFICES OF BENCH MARK LAND SURVEYING AND MAPPING INC., 4152 WEST BLUE HERON BOULEVARD, SUITE 121, RIVIERA BEACH, FLORIDA.
3. THE COORDINATES SHOWN HEREON ARE STATE PLANE GRID COORDINATES ACCORDING TO THE TRANSVERSE MERCATOR PROJECTION OF THE FLORIDA EAST ZONE, N.A.D. 83, PER THE 1990 ADJUSTMENT.
4. ALL DISTANCES SHOWN HEREON ARE GROUND DISTANCES.
5. THE GROUND DISTANCE TO GRID DISTANCE SCALE FACTOR IS 1.000026.



BENCH MARK LAND SURVEYING & MAPPING, INC.
 4152 W. BLUE HERON BOULEVARD • SUITE 121
 RIVIERA BEACH • FLORIDA 33404
 PHONE: (561) 848-2102 • L.B. 2171 • FAX: (561) 844-9659
 EMAIL: bmlsm@aol.com WEB: http://members.aol.com//bmlsm

RECORD PLAT			
GOLDEN LAKES VILLAGE P.U.D. SECTION EIGHTEEN			
DWN KVC	FB	DATE 2/18/02	WO.# P262
CKD	FILE P262/PLAT	SCALE 1"=30'	SHEET 4 OF 7

SUBDIVISION GOLDEN LAKES VILLAGE, SHEET 18
 BOOK 100 PAGE 33
 FLOOD ZONE B
 QUID # 40 ZONING R-5/5E
 SE 12901440 ZIP CODE 33411
 TAZ 51B
 PUD NAME GOLDEN LAKES VILLAGE

GOLDEN LAKES VILLAGE SECTION 13
(PLAT BOOK 47, PAGE 177)

PALM BEACH FARMS PLAT NO. 3
(PLAT BOOK 2, PAGE 45)