

VILLAGEWALK OF WELLINGTON - TOWN CENTER

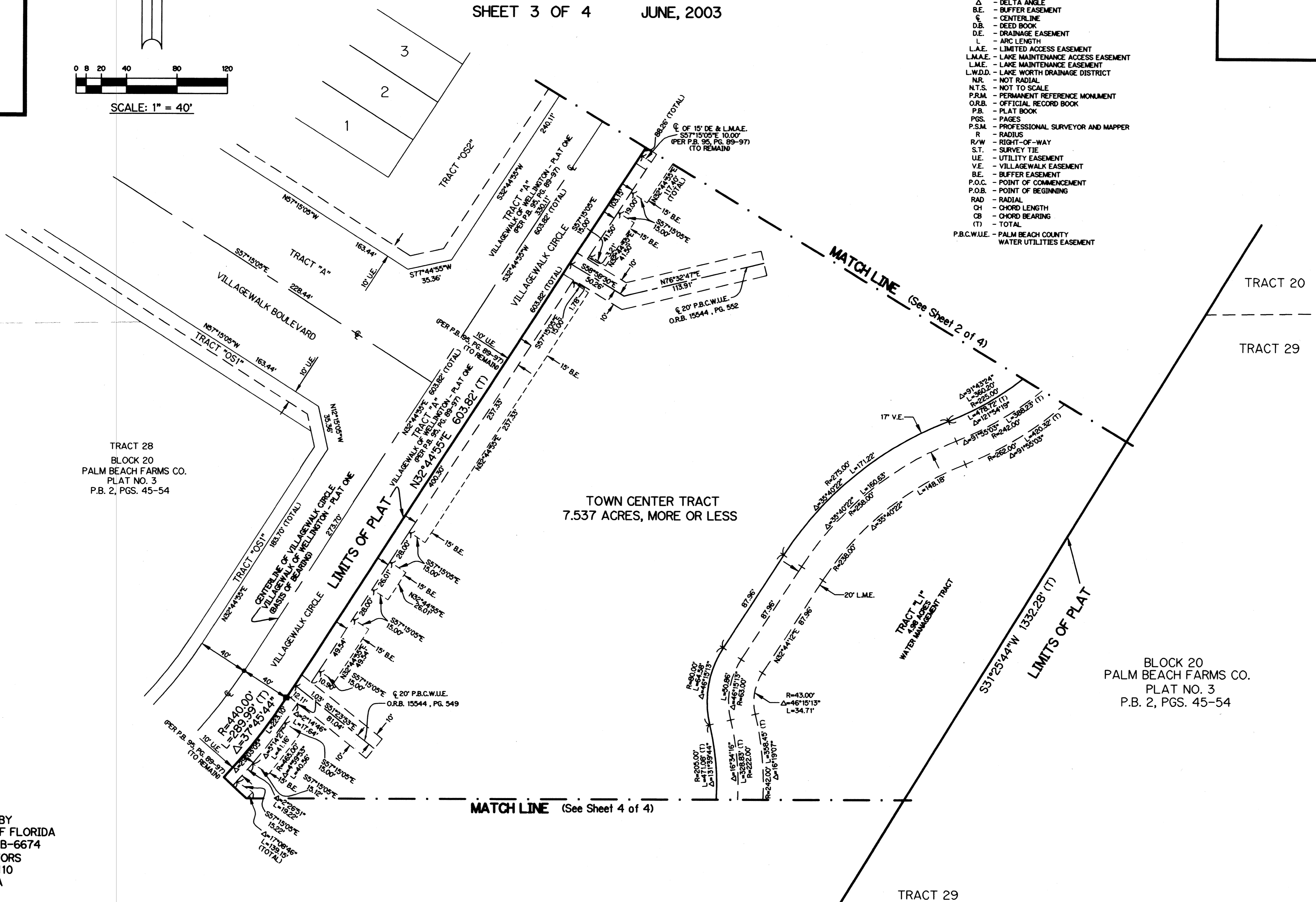
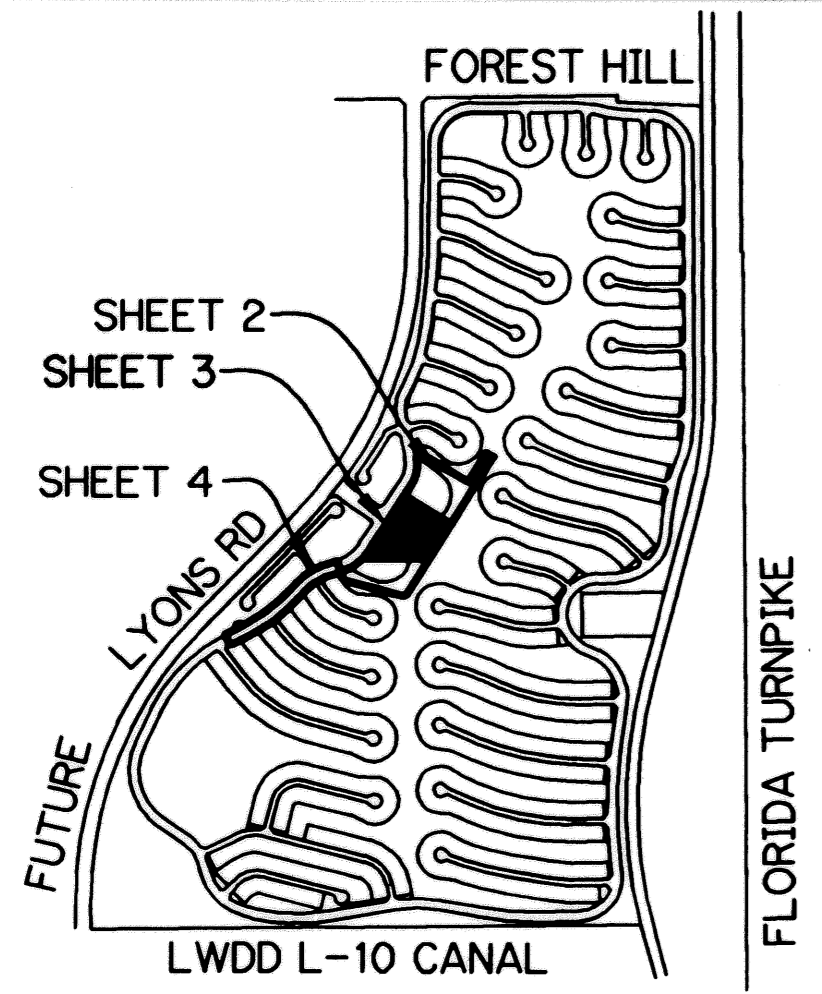
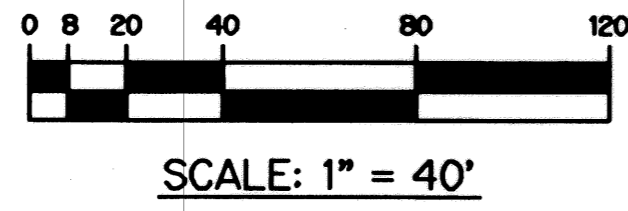
24

BEING A REPLAT OF A PORTION OF TRACT "OS3" OF THE PLAT OF VILLAGEWALK OF WELLINGTON - PLAT ONE
 AS RECORDED IN PLAT BOOK 95 AT PAGES 89 THROUGH 97, ALSO
 BEING A REPLAT OF A PORTION OF TRACTS 20, 21, 27, 28, 29, 38 AND 39, BLOCK 20, AND THE
 30 FEET ROAD RIGHTS OF WAY ACCORDING TO THE PLAT OF PALM BEACH
 FARMS COMPANY PLAT NO. 3 AS RECORDED IN PLAT BOOK 2, PAGES 45 THROUGH 54,
 INCLUSIVE, OF THE PUBLIC RECORDS OF PALM BEACH COUNTY, FLORIDA.
 LYING IN SECTION 17, TOWNSHIP 44 SOUTH, RANGE 42 EAST.
 VILLAGE OF WELLINGTON, PALM BEACH COUNTY, FLORIDA

SHEET 3 OF 4 JUNE, 2003

- LEGEND:**
- - PERMANENT REFERENCE MONUMENT, LB #6674
 - - PERMANENT CONTROL POINT, LB #6674
 - △ - DELTA ANGLE
 - B.E. - BUFFER EASEMENT
 - C - CENTERLINE
 - D.B. - DEED BOOK
 - D.E. - DRAINAGE EASEMENT
 - L - ARC LENGTH
 - L.A.E. - LIMITED ACCESS EASEMENT
 - L.M.A.E. - LAKE MAINTENANCE ACCESS EASEMENT
 - L.M.E. - LAKE MAINTENANCE EASEMENT
 - L.W.D.D. - LAKE WORTH DRAINAGE DISTRICT
 - N.R. - NOT RADIAL
 - N.T.S. - NOT TO SCALE
 - P.R.M. - PERMANENT REFERENCE MONUMENT
 - O.R.B. - OFFICIAL RECORD BOOK
 - P.B. - PLAT BOOK
 - P.G.S. - PAGES
 - P.S.M. - PROFESSIONAL SURVEYOR AND MAPPER
 - R - RADIUS
 - R/W - RIGHT-OF-WAY
 - S.T. - SURVEY TIE
 - U.E. - UTILITY EASEMENT
 - VE. - VILLAGEWALK EASEMENT
 - B.E. - BUFFER EASEMENT
 - P.O.C. - POINT OF COMMENCEMENT
 - P.O.B. - POINT OF BEGINNING
 - RAD - RADIAL
 - CH - CHORD LENGTH
 - CB - CHORD BEARING
 - (T) - TOTAL
 - P.B.C.W.U.E. - PALM BEACH COUNTY WATER UTILITIES EASEMENT

LOCATION & KEY MAP
 SEC. 8 & 17 TWP. 44 S RGE. 42 E



THIS INSTRUMENT PREPARED BY
 DAVID L. SMITH, P.S.M. 4951, STATE OF FLORIDA
 LAWSON, NOBLE AND WEBB, INC., LB-6674
 ENGINEERS PLANNERS SURVEYORS
 420 COLUMBIA DRIVE, SUITE 110
 WEST PALM BEACH, FLORIDA

BLOCK 20
 PALM BEACH FARMS CO.
 PLAT NO. 3
 P.B. 2, PGS. 45-54